

# EXHIBIT "B"

## ASSESSORS PARCEL NO.

356-032-01 & 02

## REFERENCE DRAWINGS

ROS 5405, ROS 21586 CITY DWG. 15936-D  
 GRAD. PLANS DWG. 42055-D IMP. PLANS DWG. 42063-D

## LEGEND

MSCP OPEN SPACE IN FEE, ACQUIRED  
 AREA = 237,329 SQ. FT. OR 5.448 AC.

PROPERTY LINE

RIGHT-OF-WAY LINE

CENTERLINE

EASEMENT LINE

● FOUND 2" IRON PIPE WITH DISC STAMPED  
 "RCE 14107", UNLESS OTHERWISE NOTED

( ) RECORD DATA PER ROS 5405

[ ] RECORD DATA PER DEED RECORDED JULY 26, 1955,  
 IN BOOK 5734, PAGE 371, O.R.

{ } RECORD DATA PER ROS 21586

{A} ABUTTER'S RIGHTS RELINQUISHED PER DOCUMENT  
 RECORDED NOVEMBER 21, 1949 IN BOOK 3393,  
 PAGE 220, O.R.

{B} 6' EASEMENTS TO SDG&E RECORDED DECEMBER 27,  
 1955 IN BOOK 5917, PAGE 591 AND RECORDED  
 MARCH 16, 1956 IN BOOK 6020, PAGE 19; ALL O.R.  
 10' DRAINAGE EASEMENT TO THE CITY OF SAN  
 DIEGO AS SHOWN ON CITY DWG. NO. 15936-5-D.

{D} 40' EASEMENT AND RIGHT-OF-WAY FOR ROAD  
 PURPOSES RESERVED PER GRANT DEED RECORDED  
 SEPTEMBER 4, 1952 IN BOOK 4581, PAGE 373, O.R.  
 APPROXIMATE LOCATION OF SDG&E EASEMENT PER  
 DOC. NO. 2022-0033507, REC. JAN. 24, 2022 O.R.

## BASIS OF BEARINGS

THE BASIS OF BEARINGS FOR THIS SURVEY IS THE CALIFORNIA  
 COORDINATE SYSTEM, CCS83, ZONE 6, EPOCH 1991.35.  
 TRAVERSE MEASUREMENTS TO POINTS 'A' AND 'B' ARE SHOWN  
 HEREON. THE CCS83 COORDINATES OF POINTS 'A' AND 'B' ARE  
 ESTABLISHED FROM G.P.S. STATION 813 AND G.P.S. STATION 811  
 PER ROS 14492. THE BEARING FROM POINT 'B' TO POINT 'A' IS  
 NORTH 52°20'37" WEST.  
 QUOTED BEARINGS FROM REFERENCE MAPS OR DEEDS MAY OR  
 MAY NOT BE IN TERMS OF SAID SYSTEM.  
 THE COMBINED GRID FACTOR AT POINT 'A' IS 0.999976989  
 GRID DISTANCE = GROUND DISTANCE X COMBINED GRID FACTOR.  
 ELEVATION AT POINT 'A' IS 411.97' (NGVD29).

LATITUDE 33 PLANNING & ENGINEERING  
 9968 HIBERT STREET, SECOND FLOOR  
 SAN DIEGO, CA 92131 (858) 751-0633

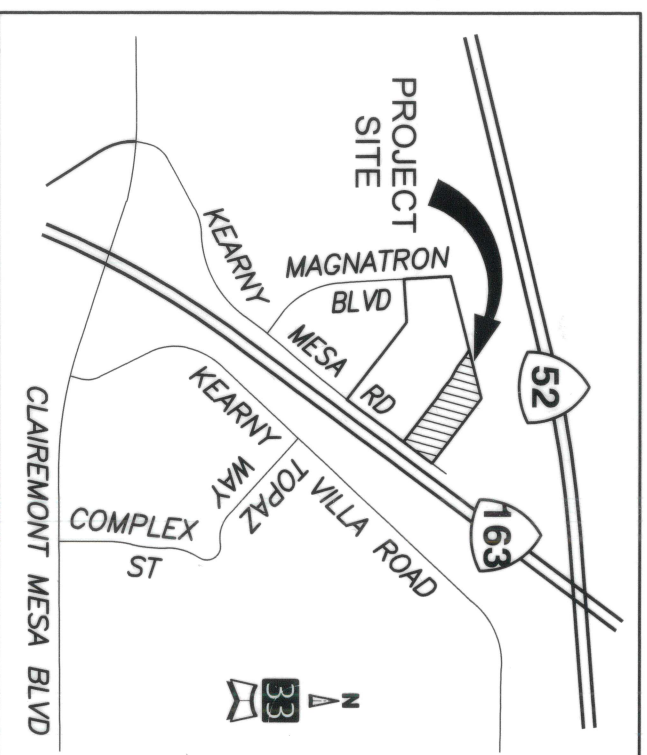
Geoffrey V. Howland  
 P.L.S. 9011  
 DATE 8/1/2022



## MULTIPLE SPECIES CONSERVATION PROGRAM (MSCP) IN FEE WITHIN A PORTION OF LOT 78 OF RANCHO MISSION OF SAN DIEGO

DESCRIPTION	BY	APPROVED	DATE	FILMED	CITY OF SAN DIEGO, CALIFORNIA	PTS 695107
ORIGINAL	L33				SHEET 1 OF 2 SHEETS	I.O. N/A
					FOR CITY LAND SURVEYOR	1884-6287
					DATE 8/12/2022	CCS 83 COORDINATES
						244-1727
						NAD 27 COORDINATES
						42502-1-B

COMPLETED STATUS

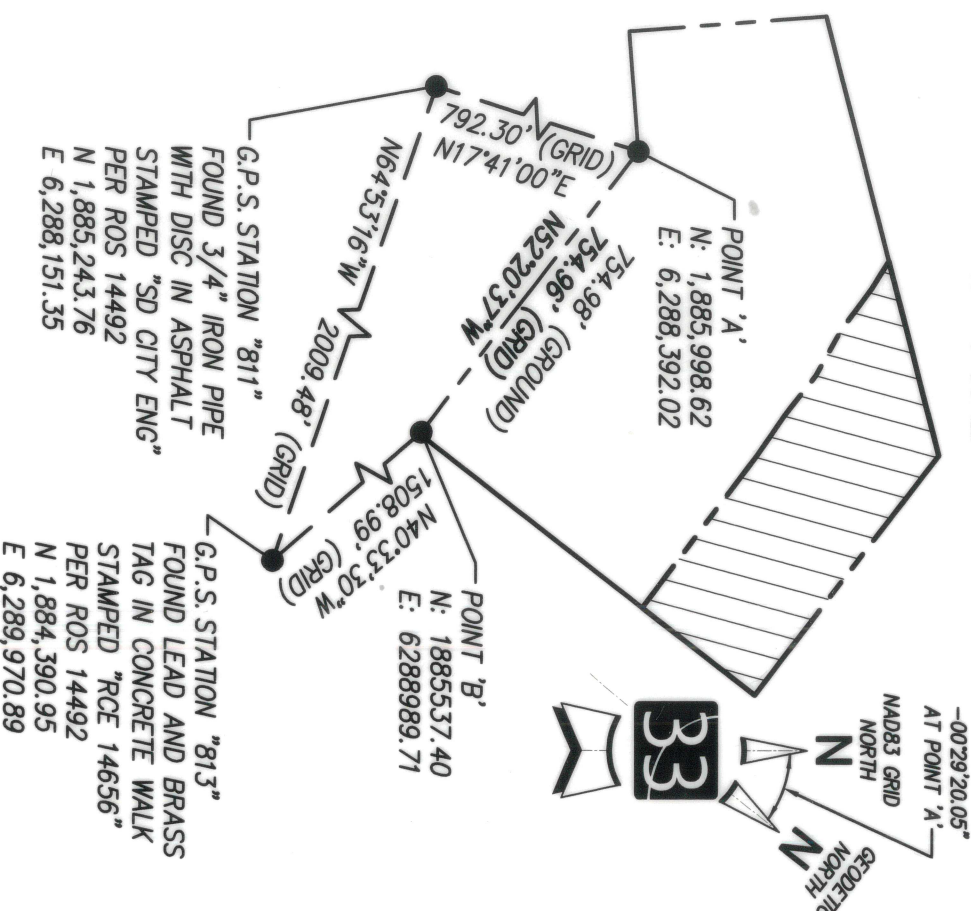


## VICINITY MAP

NOT TO SCALE

## BASIS OF BEARINGS DETAIL

NOT TO SCALE

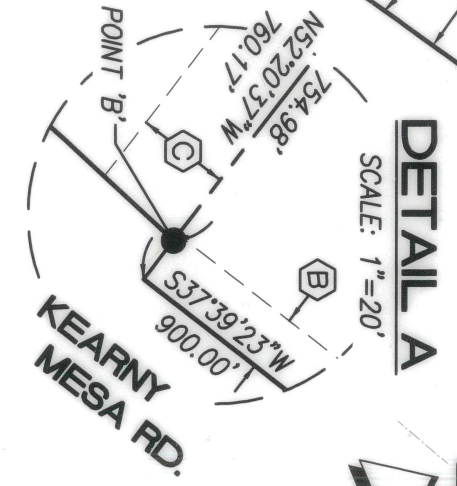
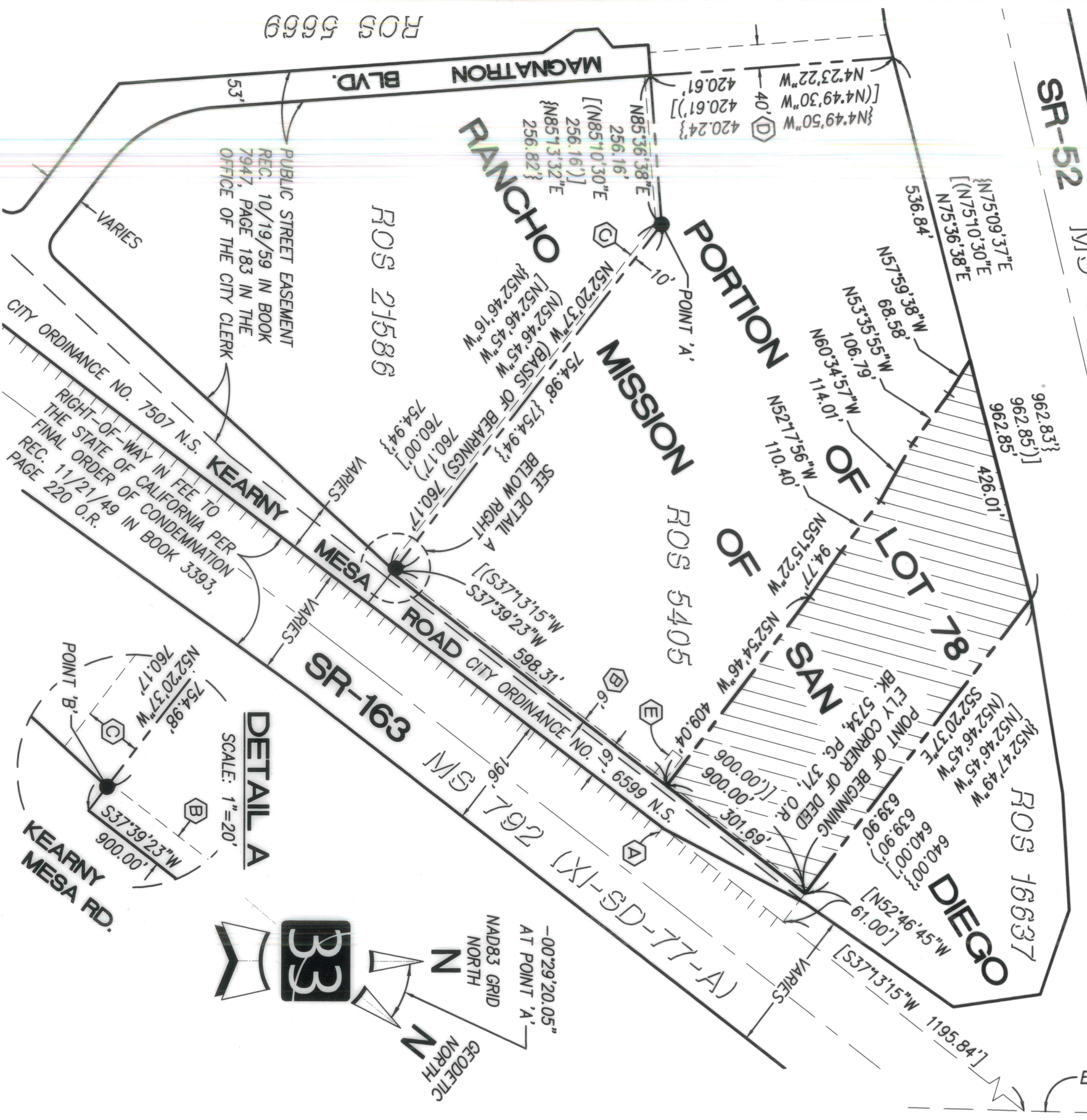


DOCUMENT No. 2022-0340923  
 RECORDED Aug 24, 2022



**EXHIBIT "B"**

1 inch = 200 ft.



LATTITUDE 33 PLANNING & ENGINEERING  
 9968 HIBERT STREET, SECOND FLOOR  
 SAN DIEGO, CA 92131 (858) 751-0633

GEOFFREY V. HOWLAND  
 P.L.S. 9011  
 DATE 8/1/2022



DOCUMENT No. \_\_\_\_\_  
 RECORDED \_\_\_\_\_

**MULTIPLE SPECIES CONSERVATION PROGRAM (MSCP) IN FEE  
 WITHIN A PORTION OF LOT 78 OF RANCHO MISSION OF SAN DIEGO**

DESCRIPTION	BY	APPROVED DATE	FILMED	CITY OF SAN DIEGO, CALIFORNIA	PTS 695107
ORIGINAL	L33			SHEET 2 OF 2 SHEETS	I.O. N/A
				FOR CITY LAND SURVEYOR	1884-6287
				DATE	CCS 83 COORDINATES
					244-1727
					NAD 27 COORDINATES
					42502-2-B

**COMPLETED**

STATUS