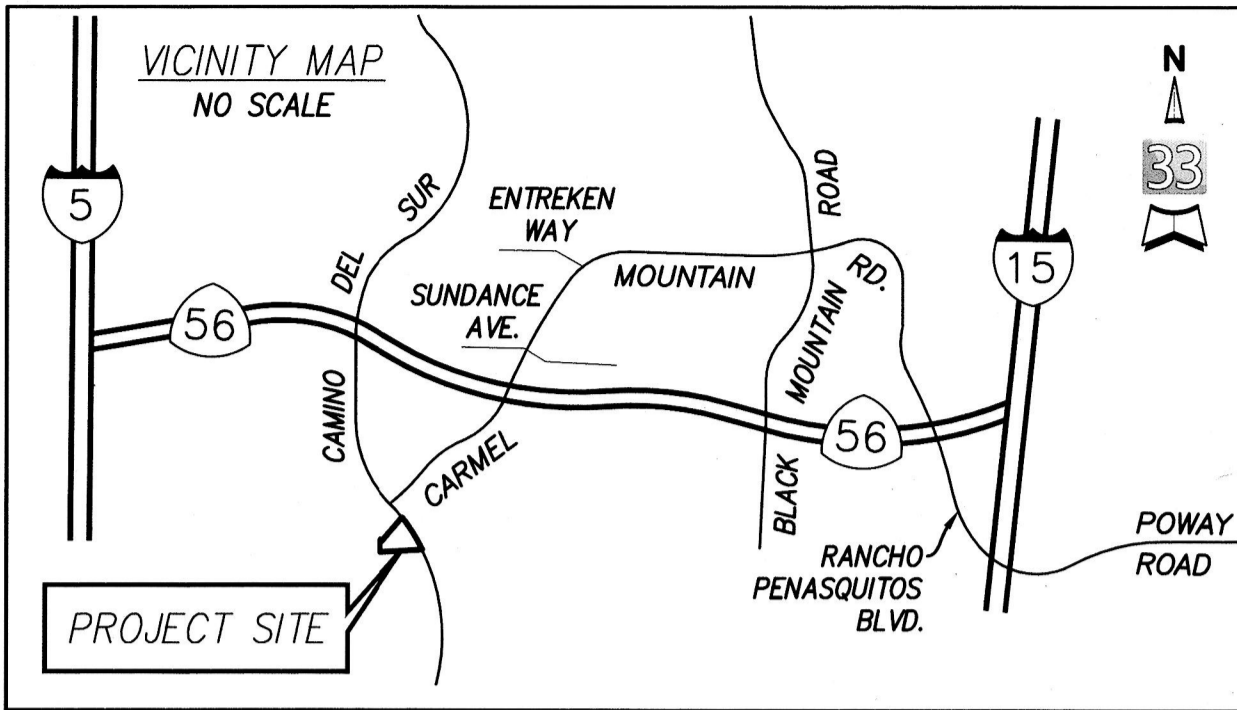


EXHIBIT "B"



ASSESSOR'S PARCEL NO.

306-420-03

REFERENCE DRAWINGS

- MAP NO. 15578
- VESTING TENTATIVE MAP NO. 7938

BASIS OF BEARINGS

THE BASIS OF BEARINGS FOR THIS PLAT IS THE SOUTH LINE OF LOT 3 OF RHODES CROSSING, MAP NO. 15578

BEARING: NORTH 86°31'34" EAST.

LEGEND



INDICATES COVENANT OF EASEMENT
 PARCEL A AREA = 0.747 ACRE
 PARCEL B AREA = 0.242 ACRE

[] INDICATES RECORD & MEASURED VALUES PER RHODES CROSSING, MAP NO. 15578

P.O.B. INDICATES POINT OF BEGINNING

P.O.C. INDICATES POINT OF COMMENCEMENT

T.P.O.B. INDICATES TRUE POINT OF BEGINNING

(TM LOT T) INDICATES LOT DESIGNATED PER VESTING TENTATIVE MAP NO. 7938, ADOPTED BY RESO. NO. R-299050 ON MARCH 30, 2004

latitude 33
 PLANNING & ENGINEERING



[Signature]
 TIMOTHY J. DAVIS PLS 8332
 REGISTRATION EXPIRES 12-31-21

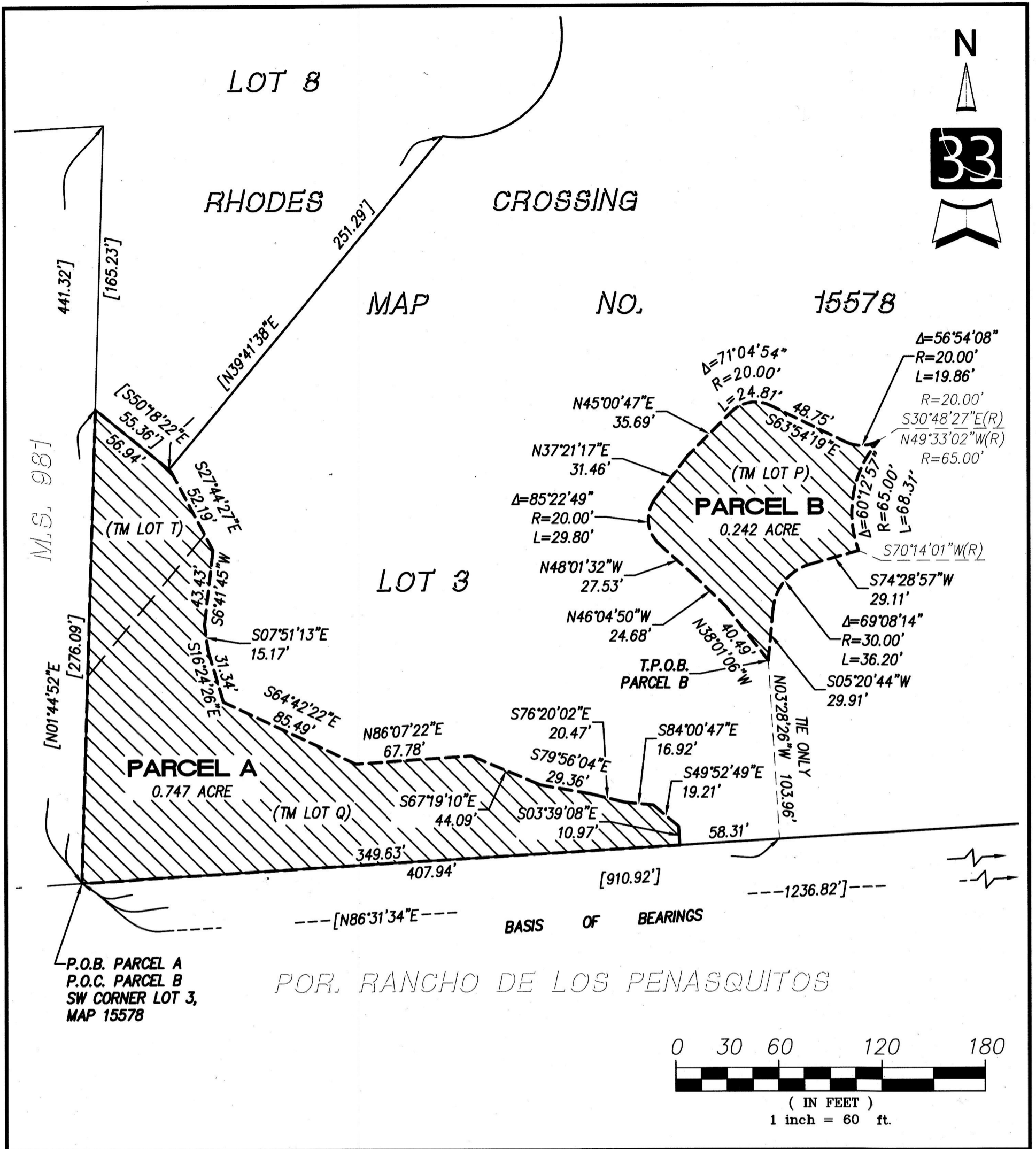
12-7-21
 DATE

DOCUMENT NO.: 2021-0840375

RECORDED: DEC 13, 2021

COVENANT OF EASEMENT FOR PROTECTION OF SENSITIVE BIOLOGICAL RESOURCES ON LANDS THAT ARE NOT INCLUDED WITHIN THE MULTIPLE SPECIES CONSERVATION PROGRAM MULTI-HABITAT PLANNING AREA WITHIN LOT 3 OF RHODES CROSSING, MAP NO. 15578

DESCRIPTION	BY	APPROVED	DATE	FILMED	CITY OF SAN DIEGO, CALIFORNIA DEVELOPMENT SERVICES DEPARTMENT SHEET 1 OF 2 SHEETS		PTS NO. 694432
ORIGINAL	LAT33				<i>[Signature]</i> FOR CITY LAND SURVEYOR	12/9/2021 DATE	I.O. NO. N/A
COMPLETED							1924 - 6283 CCS '83 COORDINATES
							284-1723 LAMBERT COORDINATES
STATUS							42514-B



latitude 33
PLANNING & ENGINEERING



T.J.D. 12-7-21
TIMOTHY J. DAVIS PLS 8332
REGISTRATION EXPIRES 12-31-21
DATE

DOCUMENT NO.: 2021-0840375
RECORDED: DEC 13, 2021

COVENANT OF EASEMENT FOR PROTECTION OF SENSITIVE BIOLOGICAL RESOURCES ON LANDS THAT ARE NOT INCLUDED WITHIN THE MULTIPLE SPECIES CONSERVATION PROGRAM MULTI-HABITAT PLANNING AREA WITHIN LOT 3 OF RHODES CROSSING, MAP NO. 15578

DESCRIPTION	BY	APPROVED	DATE	FILMED	CITY OF SAN DIEGO, CALIFORNIA DEVELOPMENT SERVICES DEPARTMENT SHEET 2 OF 2 SHEETS	PTS NO. 694432 I.O. NO. N/A
ORIGINAL	LAT33				<i>Timothy J. Davis</i> FOR CITY LAND SURVEYOR	1924 - 6283 CCS '83 COORDINATES
					12/9/2021 DATE	284-1723 LAMBERT COORDINATES
COMPLETED						42514-B
STATUS						