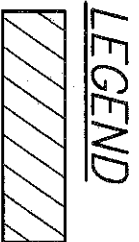


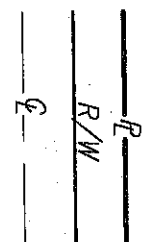
ASSESSORS' PARCEL NO.
547-031-16-00



LEGEND
INDICATES PORTION OF THE SEWER, WATER, DRAINAGE & PUBLIC UTILITIES EASEMENT GRANTED PER MAP 3878-VACATED HEREON.
AREA = 3,756.74 SQ. FT. (0.086 ACRES)

BASIS OF BEARINGS

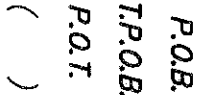
THE CENTERLINE OF 45th STREET AS SHOWN PER MAP NO. 3878 I.E. N00°14'20"E.



INDICATES PROPERTY LINE.
INDICATES RIGHT-OF-WAY LINE.
INDICATES STREET CENTERLINE.
INDICATES POINT OF BEGINNING.
INDICATES TRUE POINT OF BEGINNING.
INDICATES POINT OF TERMINUS.
INDICATES RECORD OR CALCULATED DATA PER MAP 3878.

REFERENCE DRAWINGS

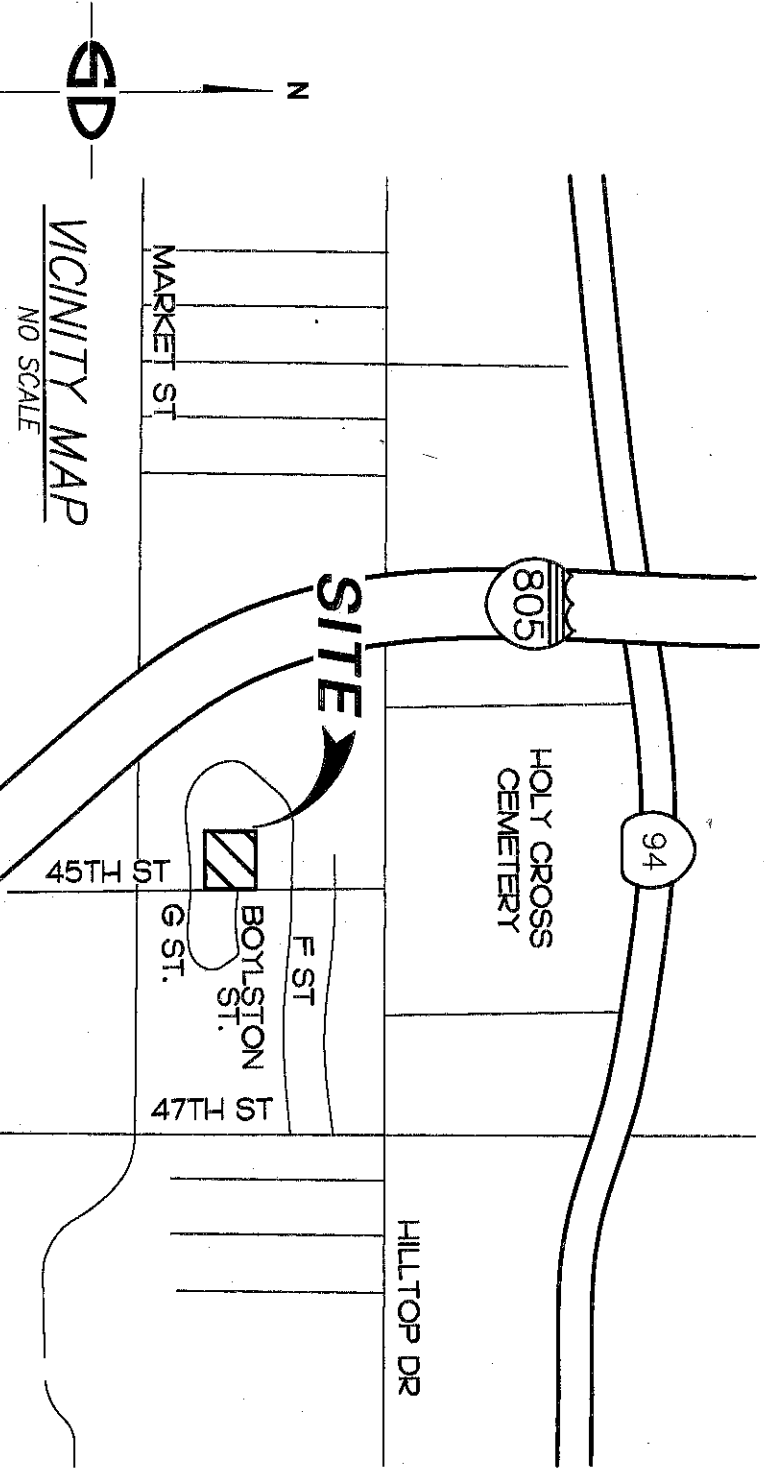
MAP 3878



P.O.B. INDICATES POINT OF BEGINNING.
T.P.O.B. INDICATES TRUE POINT OF BEGINNING.
P.O.T. INDICATES POINT OF TERMINUS.
() INDICATES RECORD OR CALCULATED DATA PER MAP 3878.

EASEMENTS

- 1 REFERS TO THE RIGHTS OF THE CITY OF SAN DIEGO TO CONSTRUCT, MAINTAIN AND REPAIR ANY AND ALL WATER AND SEWER PIPE LINES AS MAY BE EXISTING UPON SAID LAND ON DECEMBER 7, 1942 AS SET FORTH IN THE FINAL DECREE IN CONDEMNATION AND RECORDED NOVEMBER 16, 1943 IN BOOK 1580, PAGE 403 OF OFFICIAL RECORDS. EASEMENT IS SUCH THAT IS NON-PLOTTABLE.
- 2 REFERS TO THE SEWER, WATER, DRAINAGE & PUBLIC UTILITIES EASEMENT GRANTED PER MAP NO. 3878.
- 4 REFERS TO AN EASEMENT FOR PUBLIC UTILITIES, INGRESS, EGRESS TO THE PACIFIC TELEPHONE AND TELEGRAPH COMPANY, RECORDED JUNE 15, 1959 IN BOOK 7448, PAGE 78 OF OFFICIAL RECORDS.
- 5 REFERS TO AN EASEMENT FOR PUBLIC UTILITIES, INGRESS, EGRESS TO SAN DIEGO GAS AND ELECTRIC COMPANY, RECORDED FEBRUARY 1959 IN BOOK 7486, PAGE 51 OF OFFICIAL RECORDS.
- 6 REFERS TO AN EASEMENT FOR PUBLIC UTILITIES, INGRESS, EGRESS TO SAN DIEGO GAS AND ELECTRIC COMPANY, RECORDED MARCH 9, 1979, RECORDING NO. 76-068783 OF OFFICIAL RECORDS.
- 7 REFERS TO AN EASEMENT FOR PERPETUAL AIR OR FLIGHT EASEMENT, ALSO REFERRED TO AS "AVIGATION RIGHTS", RECORDED OCTOBER 30, 1980, RECORDING NO. 1980-363914 OF OFFICIAL RECORDS. ASSIGNMENT OF AVIGATION EASEMENT RECORDED JANUARY 07, 2003 AS INSTRUMENT NO. 2003.0016723 OF OFFICIAL RECORDS. EASEMENT IS SUCH THAT IT IS NON-PLOTTABLE.



SNIPES-LE ASSOCIATES
8348 CENTER DRIVE, SUITE G,
LA MESA, CA 91942

WILLIAM A. SNIPES
L.S. 8034
EXPIRES 12-31-22

5/6/22

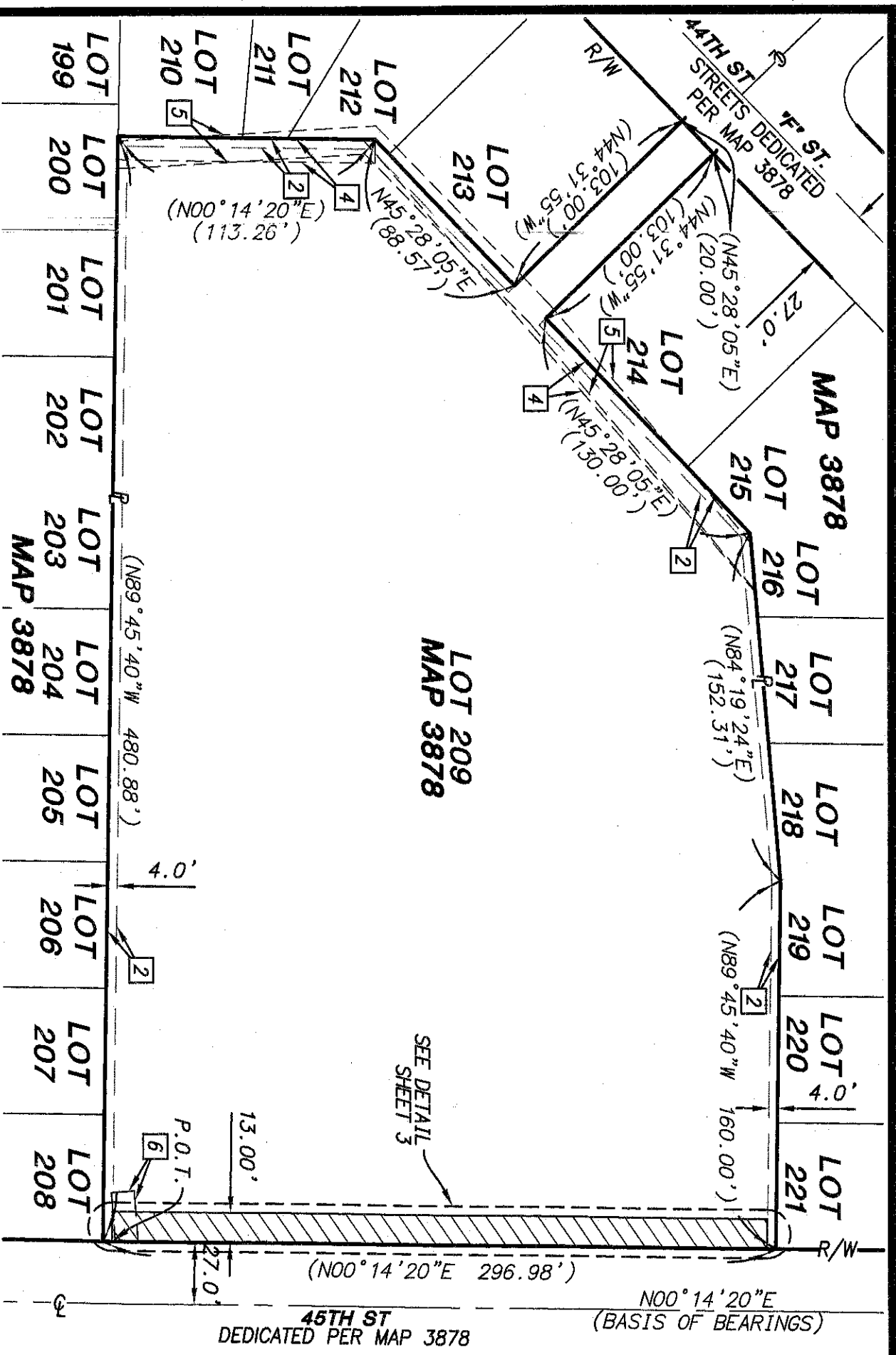


DOCUMENT NO. 2022- 0402 864
RECORDED 10/18/2022
RESOLUTION NO. CM- 7121
ADOPTED 5/5/2022

PORTION OF THE SEWER, WATER, DRAINAGE & PUBLIC UTILITIES EASEMENT VACATION
IN LOT 209 OF CHOLLAS VIEW SUBDIVISION UNIT 2, MAP 3878

DESCRIPTION	BY	APPROVED DATE	FILMED	CITY OF SAN DIEGO, CALIFORNIA	SHEET 1 OF 3 SHEETS	P.T.S. NO.
ORIGINAL	SDA					694728
				FOR CITY LAND SURVEYOR		1904-6259
						NAD 83 COORDS.
						264-1699
						LAMBERT COORDINATES
						42520-B

VACATED



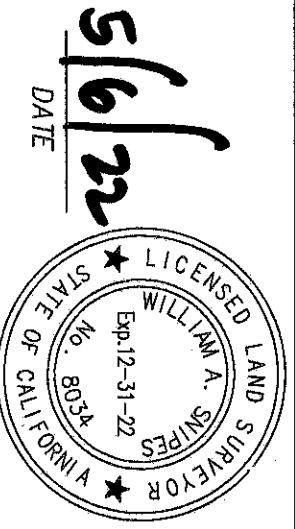
EASEMENTS

- 1 REFERS TO THE RIGHTS OF THE CITY OF SAN DIEGO TO CONSTRUCT, MAINTAIN AND REPAIR ANY AND ALL WATER AND SEWER PIPE LINES AS MAY BE EXISTING UPON SAID LAND ON DECEMBER 7, 1942 AS SET FORTH IN THE FINAL DECREE IN CONDEMNATION AND RECORDED NOVEMBER 16, 1943 IN BOOK 1580, PAGE 403 OF OFFICIAL RECORDS. EASEMENT IS SUCH THAT IS NON-PLOTTABLE.
- 2 REFERS TO THE SEWER, WATER, DRAINAGE & PUBLIC UTILITIES EASEMENT GRANTED PER MAP NO. 3878.
- 4 REFERS TO AN EASEMENT FOR PUBLIC UTILITIES, INGRESS, EGRESS TO THE PACIFIC TELEPHONE AND TELEGRAPH COMPANY, RECORDED JUNE 15, 1959 IN BOOK 7448, PAGE 78 OF OFFICIAL RECORDS.
- 5 REFERS TO AN EASEMENT FOR PUBLIC UTILITIES, INGRESS, EGRESS TO SAN DIEGO GAS AND ELECTRIC COMPANY, RECORDED FEBRUARY 1959 IN BOOK 7486, PAGE 51 OF OFFICIAL RECORDS.
- 6 REFERS TO AN EASEMENT FOR PUBLIC UTILITIES, INGRESS, EGRESS TO SAN DIEGO GAS AND ELECTRIC COMPANY, RECORDED MARCH 9, 1979, RECORDING NO. 76-068783 OF OFFICIAL RECORDS.
- 7 REFERS TO AN EASEMENT FOR PERPETUAL AIR OR FLIGHT EASEMENT, ALSO REFERRED TO AS "AVIGATION RIGHTS", RECORDED OCTOBER 30, 1980, RECORDING NO. 1980-363914 OF OFFICIAL RECORDS. ASSIGNMENT OF AVIGATION EASEMENT RECORDED JANUARY 07, 2003 AS INSTRUMENT NO. 2003.0016723 OF OFFICIAL RECORDS. EASEMENT IS SUCH THAT IT IS NON-PLOTTABLE.



SNIPES-DEE ASSOCIATES
8348 CENTER DRIVE SUITE G,
LA MESA, CA 91942

WILLIAM A. SNIPES L.S. 8034
EXPIRES 12-31-22



DOCUMENT NO. _____

RECORDED _____

RESOLUTION NO. _____

ADOPTED _____

**PORTION OF THE SEWER, WATER, DRAINAGE & PUBLIC UTILITIES
EASEMENT VACATION**

IN LOT 209 OF CHOLLAS VIEW SUBDIVISION UNIT 2, MAP 3878

DESCRIPTION	BY	APPROVED	DATE	FILMED
ORIGINAL	SDA			

CITY OF SAN DIEGO, CALIFORNIA

SHEET 2 OF 3 SHEETS

FOR CITY LAND SURVEYOR

DATE

P.T.S. NO. 694728

1904-6259

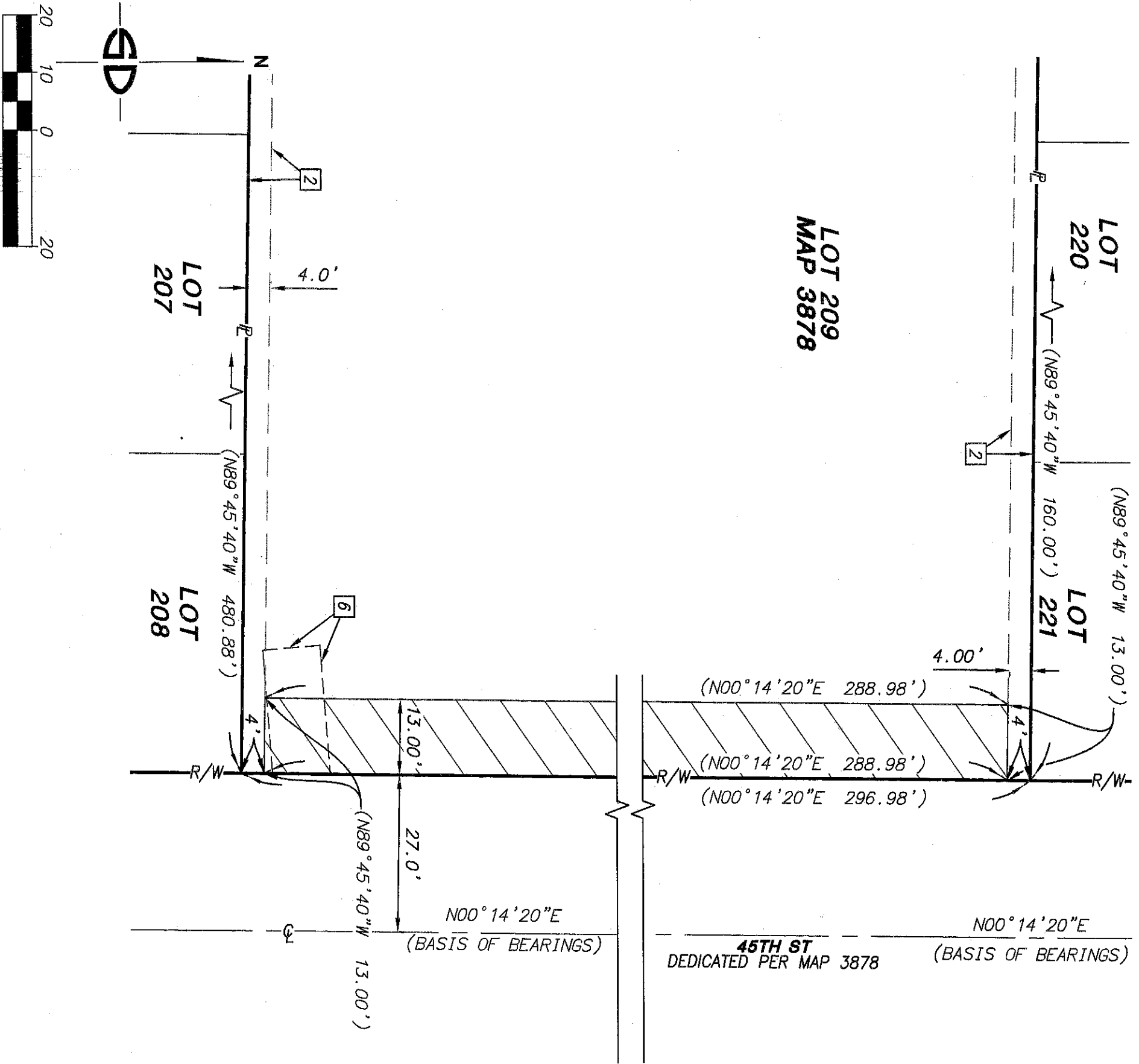
NAD 83 COORDS.

264-1699

LAMBERT COORDINATES

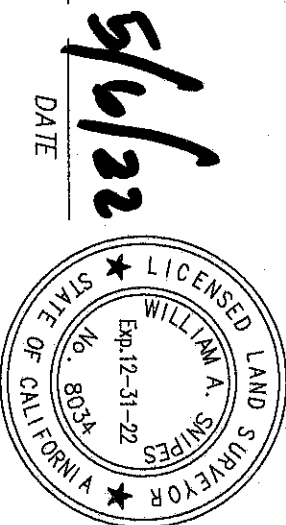
42520-B

LOT 209
MAP 3878



SNIPES-D. ASSOCIATES
8348 CENTER DRIVE SUITE G,
LA MESA, CA 91942

WILLIAM A. SNIPES L.S. 8034
EXPIRES 12-31-22



shelza

DOCUMENT NO. _____
RECORDED _____
RESOLUTION NO. _____
ADOPTED _____

PORTION OF THE SEWER, WATER, DRAINAGE & PUBLIC UTILITIES
EASEMENT VACATION
IN LOT 209 OF CHOLLAS VIEW SUBDIVISION UNIT 2, MAP 3878

DESCRIPTION	BY	APPROVED	DATE	FILMED
ORIGINAL	SDA			

CITY OF SAN DIEGO, CALIFORNIA

SHEET 3 OF 3 SHEETS

Will R. Fry
FOR CITY LAND SURVEYOR DATE *6/8/2022*

P.T.S. NO. 694728

1904-6259
NAD 83 COORDS.

264-1699
LAMBERT COORDINATES

42520-B