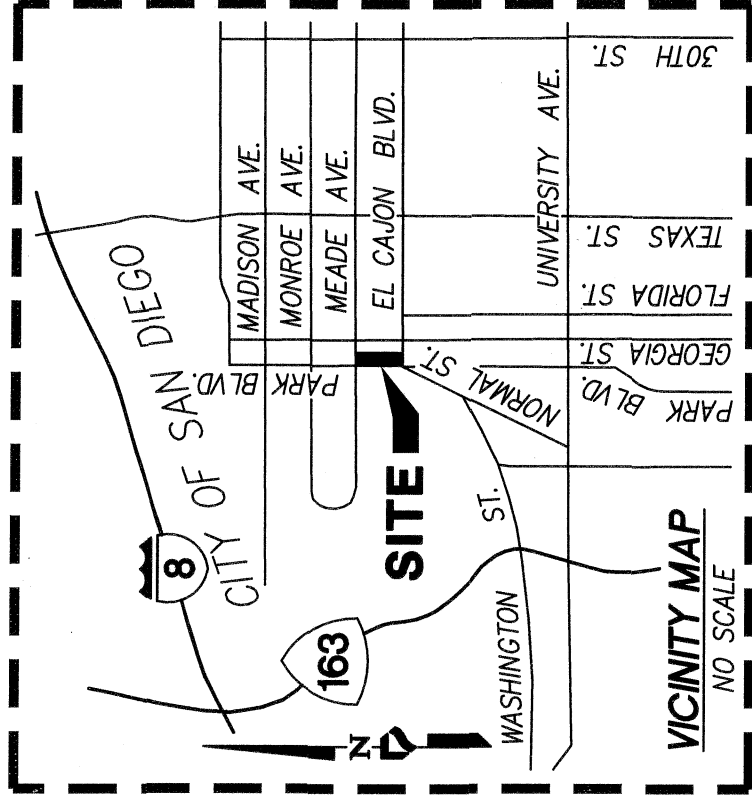


EXHIBIT "B"



LEGEND



INDICATES WATER EASEMENT VACATED HEREON
AREA = 93.69 SQ. FT. (0.002 AC.) MORE OR LESS



INDICATES FOUND LEAD & DISC STAMPED "L.S. 7019"
AT 7' OFFSET IN CONCRETE WALK PER ROS 23088.



INDICATES FOUND LEAD & DISC STAMPED "LS 5653"
NO RECORD. ACCEPTED AS REPLACEMENT FOR LEAD &
DISC STAMPED "CITY ENGR" SET PER CR 1789 AND
HELD AS 7'X7' OFFSET TO BLOCK CORNER.



INDICATES FOUND LEAD & DISC STAMPED "SD CITY
SURVEYOR" PER CR 37107. HELD AS 7'X7' OFFSET TO
BLOCK CORNER.



INDICATES RECORD DATA PER ROS 23088



INDICATES RECORD DATA PER DOCUMENT NO.
2019-0484839; RECORDED OCTOBER 25, 2019, O.R.



INDICATES EXISTING RIGHT OF WAY



INDICATES EXISTING CENTERLINE



INDICATES LOT LINE

LEGAL DESCRIPTION

LOT A IN BLOCK 1 OF ROBERTS SUBDIVISION, IN THE CITY OF SAN DIEGO, COUNTY OF SAN DIEGO, STATE OF CALIFORNIA, ACCORDING TO MAP THEREOF NO. 890, FILED IN THE OFFICE OF THE COUNTY RECORDER OF SAN DIEGO COUNTY, DECEMBER 31, 1902.

ASSESSOR'S PARCEL NO.

- 445-310-04

REFERENCE DRAWINGS

- MAP NO. 890 • MAP NO. 558
- MAP NO. 15345 • ROS NO. 23088
- DWG. NO. 41427-B • DWG. NO. 41597-D
- DWG. NO. 41712-D • DWG. NO. 41711-B
- DWG. NO. 42436-B

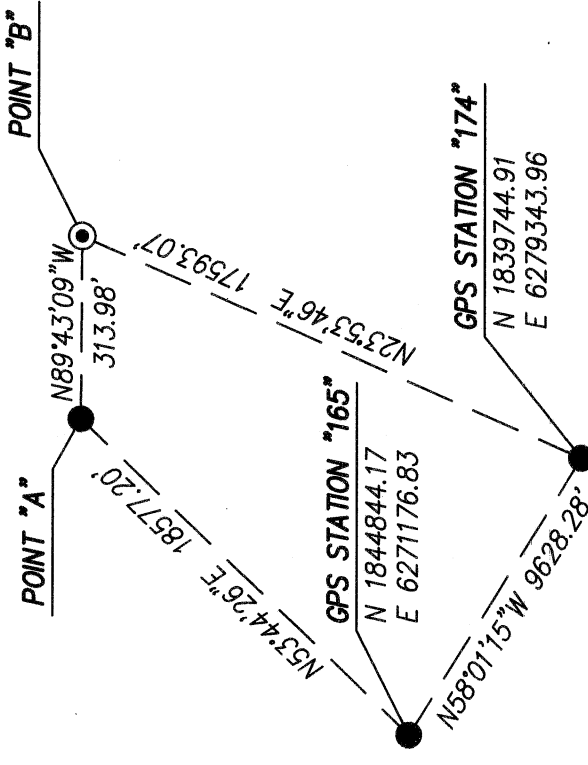
BASIS OF BEARINGS

THE BASIS OF BEARINGS FOR THIS SURVEY IS THE CALIFORNIA COORDINATE SYSTEM OF 1983, ZONE 6, EPOCH 1991.35 GRID BEARING BETWEEN FIRST ORDER POINTS "174" AND "165" AS SHOWN HEREON PER ROS 14492.

I.E., NORTH 58°01'15" WEST

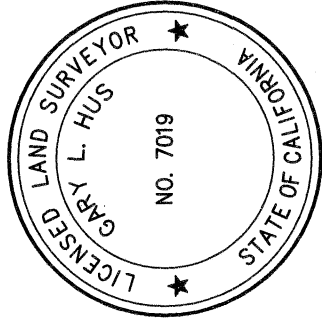
DISTANCES SHOWN HEREON ARE GROUND DISTANCES. TO OBTAIN GRID LEVEL DISTANCES, MULTIPLY DISTANCES BY 1.0000177. QUOTED BEARINGS FROM REFERENCE DEEDS/MAPS MAY OR MAY NOT BE IN TERMS OF SAID SYSTEM.

ELEVATION AT G.P.S. STATION 174 IS 9.17 N.G.V.D. 29. SEE DETAIL AT RIGHT



BASIS OF BEARINGS DETAIL

NO SCALE (SEE ROS 23088)



Gary L. Hus
GARY L. HUS, L.S. 7019 DATE 05-11-2023



PROJECT DESIGN CONSULTANTS

701 B Street, Suite 800 San Diego, CA 92101
619.235.6471 Tel 619.234.0349 Fax

RESOLUTION NO: CM-7237

ADOPTED: JUNE 8, 2023

DOCUMENT NO.: 2023-0165894

RECORDED: JUNE 26, 2023

WATER EASEMENT VACATION

IN PORTION OF LOT A IN BLOCK 1 OF
ROBERTS SUBDIVISION MAP NO. 890

DESCRIPTION	BY	APPRVD.	DATE	FILMED
ORIGINAL	PDC			
	CEO		6/8/23	
VACATED				
				STATUS

CITY OF SAN DIEGO, CALIFORNIA
SHEET 1 OF 2 SHEETS

Gary L. Hus
FOR CITY LAND SURVEYOR DATE 5/15/2023

P.T.S. NO. 697062
I.O. NO. N/A

1854-6283

CCS83 COORDINATES

214-1723

LAMBERT COORDINATES

42550-1-B

