

EXHIBIT "B"

ASSESSOR'S PARCEL NO.

- 760-013-39

REFERENCE DRAWINGS

- ROS 20589 • MISC. MAP NO. 564
- SDUPD NO. 518-079 • CITY DWG. 39267-D
- ROS 11505

LEGEND

INDICATES OPEN SPACE MAINTENANCE AGREEMENT ACQUIRED (AREA = 1.543 ACRE)

P.O.C. INDICATES POINT OF COMMENCEMENT

P.O.B. INDICATES POINT OF BEGINNING

O.H.W.M. INDICATES ORDINARY HIGH WATER MARK

() INDICATES RECORD DATA PER ROS 11505

{ } INDICATES RECORD DATA PER GROUND LEASE & GRANT DEED DOC. NO. 2021-0132115, RECORDED FEBRUARY 19, 2021, O.R.

[] INDICATES TIE DIMENSION ONLY

[A] FOUND STANDARD STREET SURVEY MONUMENT AT 2' OFFSET WEST OF CENTERLINE INTERSECTION OF HARBOR DRIVE AND BROADWAY PER PORT DISTRICT NOTES BOOK 324/1, ROS 11505 AND ROS 20589.

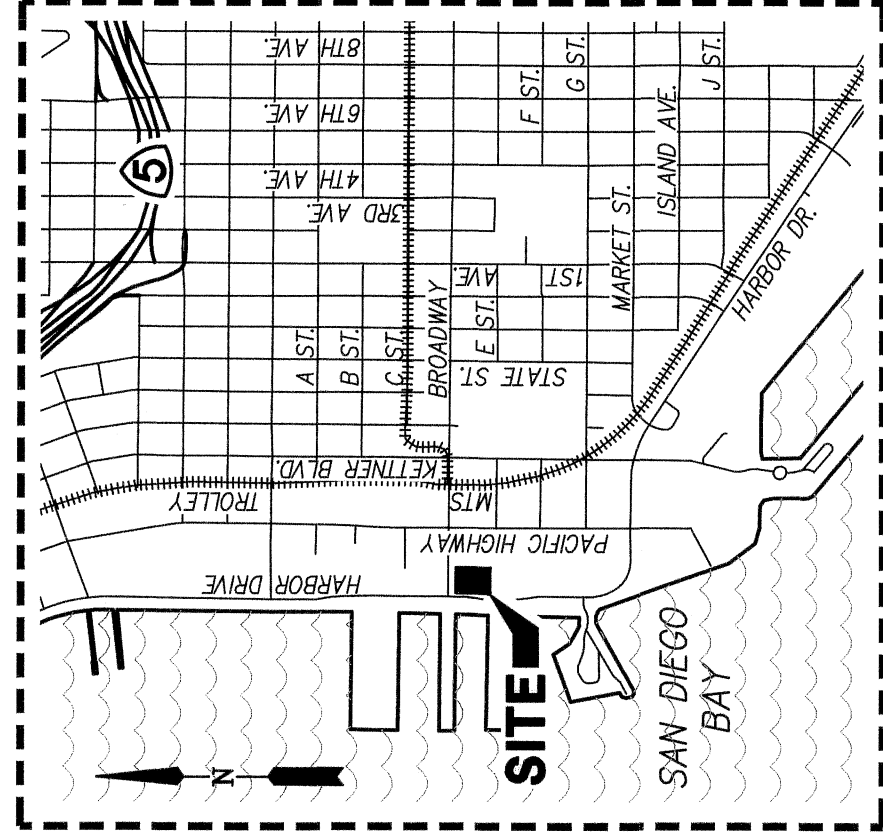
[B] FOUND STANDARD STREET SURVEY MONUMENT AT CENTERLINE INTERSECTION OF PACIFIC HIGHWAY AND BROADWAY. NO RECORD. ACCEPTED ON ROS 11505 AND HEREON AS THE CENTERLINE INTERSECTION OF BROADWAY AND PACIFIC HIGHWAY.

[C] FOUND STANDARD STREET SURVEY MONUMENT AT CENTERLINE INTERSECTION OF PACIFIC HIGHWAY AND MARKET STREET. NO RECORD. SHOWN ON ROS 11505.

△ FOUND STANDARD STREET SURVEY MONUMENT ON THE CENTERLINE OF MARKET STREET. NO RECORD. SHOWN ON ROS 11505.

① CITY OF SAN DIEGO SEWER EASEMENT PER SDUPD DWG. NO. 518-018 (11557-13-D)

② 8' WIDE EASEMENT FOR UNDERGROUND FACILITIES GRANTED TO SDG&E PER DOC. NO. 1991-0604915 RECORDED NOV. 22, 1991



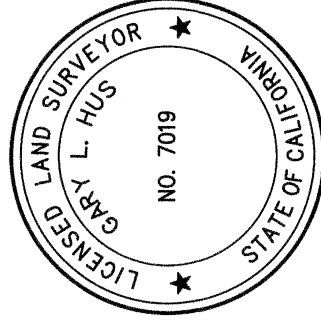
VICINITY MAP

NOT TO SCALE

BASIS OF BEARINGS

THE BASIS OF BEARINGS FOR THIS DRAWING IS A PORTION OF THE CENTERLINE OF HARBOR DRIVE PER RECORD OF SURVEY NO. 20589.

I.E., NORTH 00°31'55" EAST



Gary L. Hus
GARY L. HUS, L.S. 7019 DATE 10-19-2021



PROJECT DESIGN CONSULTANTS

701 B Street, Suite 800 San Diego, CA 92101
619.235.6471 Tel 619.234.0949 Fax

DOCUMENT NO.: 2021-0821156

RECORDED: DECEMBER 2, 2021

**EASEMENT, USE AND MAINTENANCE AGREEMENT
FOR OPEN SPACE (BLOCK 1A)**

PORTIONS OF THE MUNICIPAL TIDELANDS SUBDIVISION TRACT NO. 1 ACCORDING TO MAP FILED IN THE OFFICE OF THE CITY CLERK OF THE CITY OF SAN DIEGO ON MAY 18, 1916 AS DOCUMENT NO. 100007

DESCRIPTION	BY	APPRVD.	DATE	FILMED
ORIGINAL	PDC			
	CEP		10/20/21	

CITY OF SAN DIEGO, CALIFORNIA

SHEET 1 OF 3 SHEETS

Gary L. Hus FOR CITY LAND SURVEYOR DATE 10/20/2021

P.T.S. NO. 695084

1840-6275

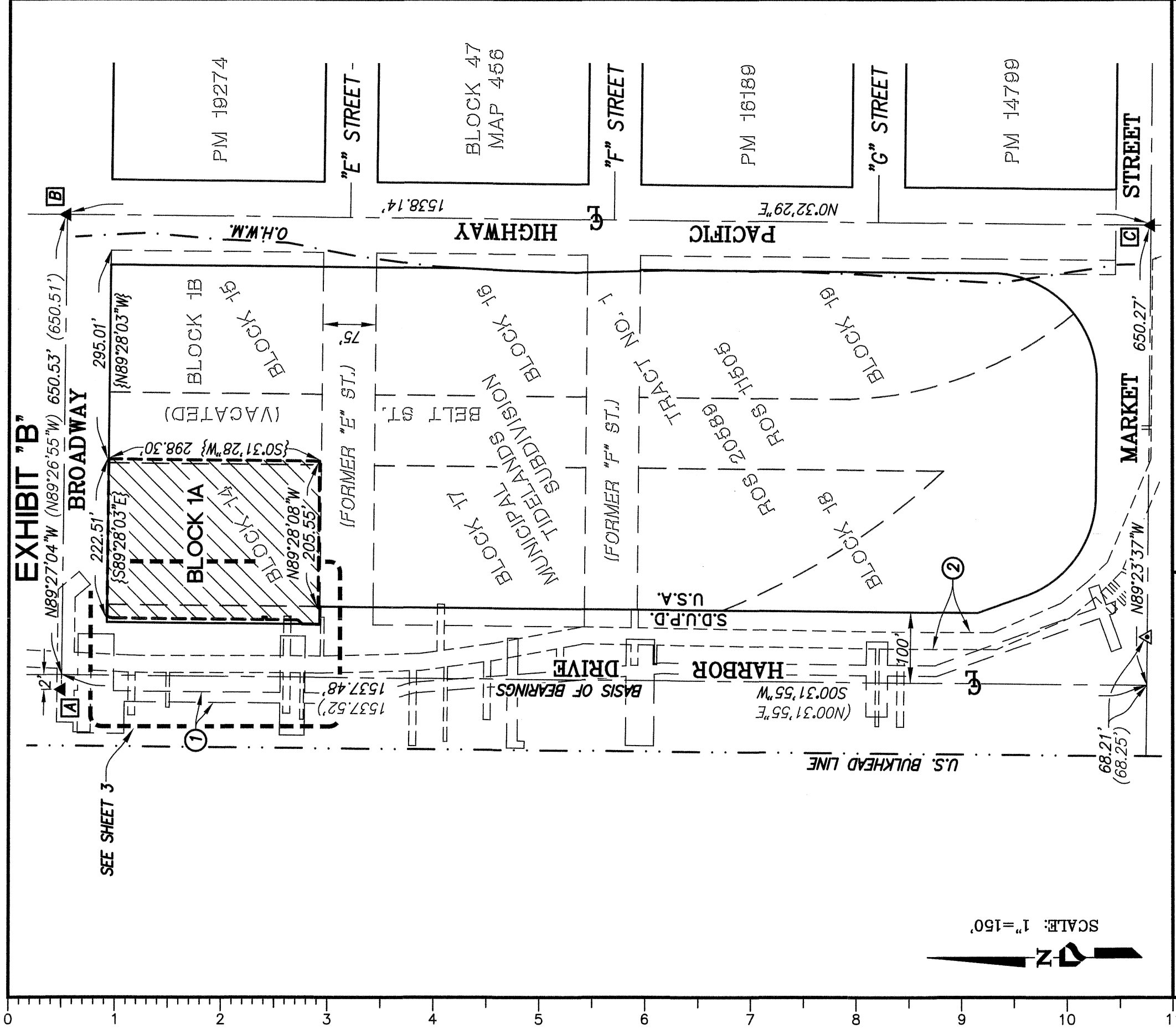
CCS83 COORDINATES

200-1715

LAMBERT COORDINATES

COMPLETED

42552-1-B



PROJECT DESIGN CONSULTANTS
 701 B Street, Suite 800 San Diego, CA 92101
 619.236.6471 Tel 619.234.0949 Fax

EASEMENT, USE AND MAINTENANCE AGREEMENT FOR OPEN SPACE (BLOCK 1A)

PORTIONS OF THE MUNICIPAL TIDELANDS SUBDIVISION TRACT NO. 1 ACCORDING TO MAP FILED IN THE OFFICE OF THE CITY CLERK OF THE CITY OF SAN DIEGO ON MAY 18, 1916 AS DOCUMENT NO. 100007

DESCRIPTION	BY	APPRVD.	DATE	FILMED
ORIGINAL	PDC			
		LED	10/20/21	

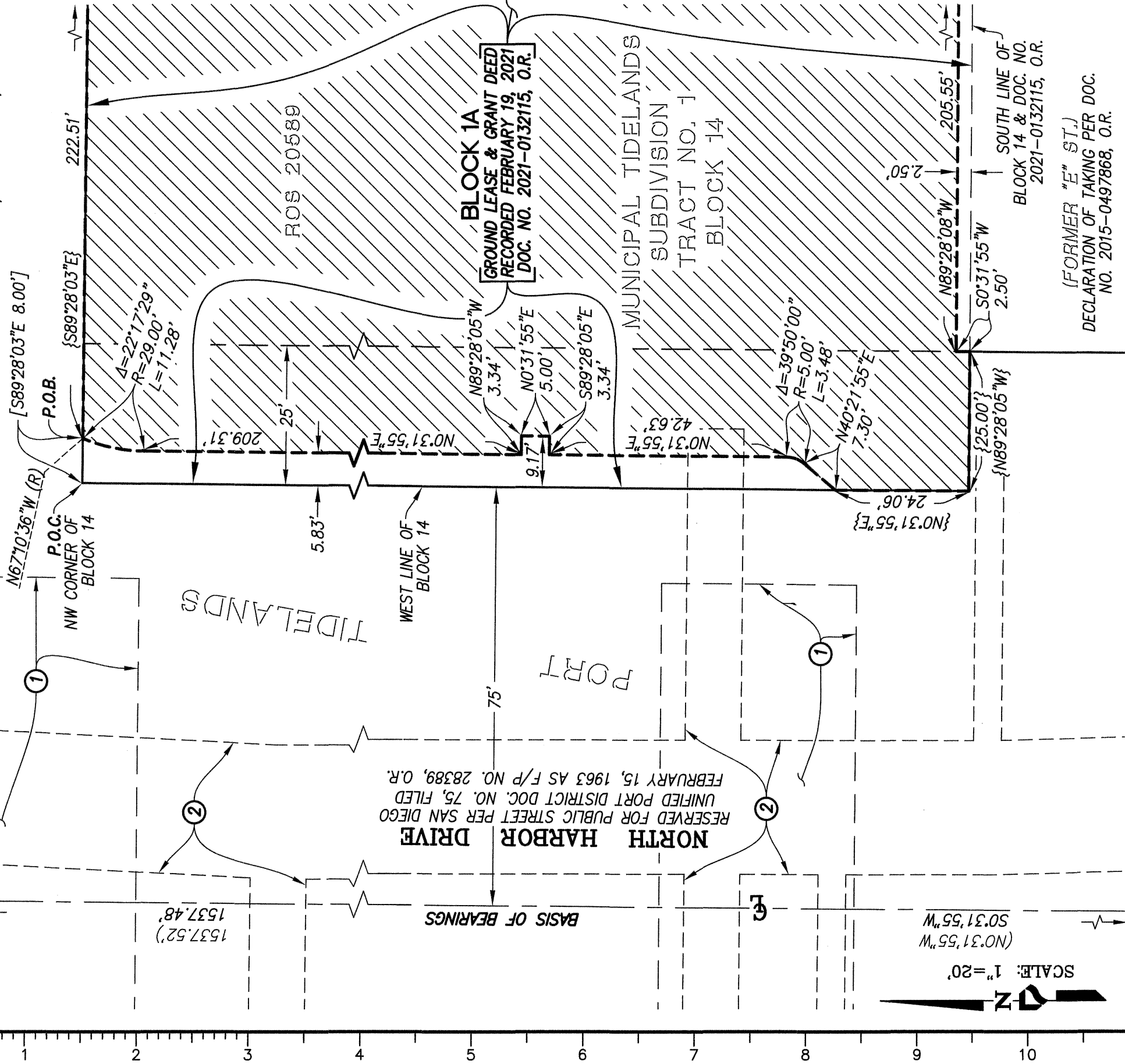
CITY OF SAN DIEGO, CALIFORNIA
 SHEET 2 OF 3 SHEETS
Paul R. Fry
 FOR CITY LAND SURVEYOR DATE 10/20/2021

P.T.S. NO. 695084
 1840-6275
 CCS83 COORDINATES
 200-1715
 LAMBERT COORDINATES
 42552-2-B

COMPLETED

EXHIBIT "B"

BROADWAY
RESERVED FOR PUBLIC STREET PER SAN DIEGO
UNIFIED PORT DISTRICT DOC. NO. 75, FILED
FEBRUARY 15, 1963 AS F/P NO. 28339, O.R.



(FORMER "E" ST.)
DECLARATION OF TAKING PER DOC.
NO. 2015-0497868, O.R.



PROJECT DESIGN CONSULTANTS

701 B Street, Suite 800 San Diego, CA 92101
619.236.6471 Tel 619.234.0349 Fax

**EASEMENT, USE AND MAINTENANCE AGREEMENT
FOR OPEN SPACE (BLOCK 1A)**

PORTIONS OF THE MUNICIPAL TIDELANDS SUBDIVISION TRACT NO. 1 ACCORDING TO MAP FILED IN THE OFFICE OF THE CITY CLERK OF THE CITY OF SAN DIEGO ON MAY 18, 1916 AS DOCUMENT NO. 100007

DESCRIPTION	BY	APPRVD.	DATE	FILMED
ORIGINAL	PDC			
	LED		10/20/2021	

CITY OF SAN DIEGO, CALIFORNIA

SHEET 3 OF 3 SHEETS

Andrew R. P. [Signature] 10/20/2021
FOR CITY LAND SURVEYOR DATE

P.T.S. NO. 695084

1840-6275

CCS83 COORDINATES

200-1715

LAMBERT COORDINATES

COMPLETED

42552-3-B