
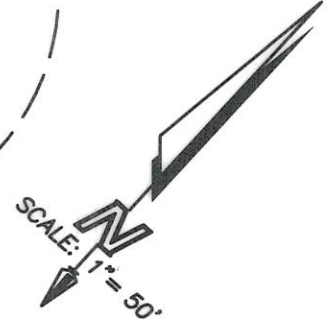
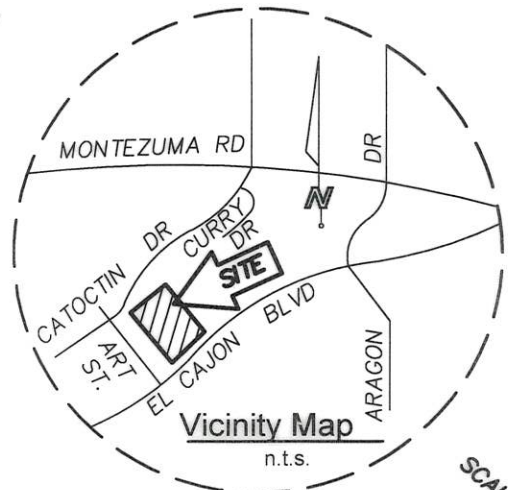


EXHIBIT "B"

LEGEND

 INDICATES PUBLIC SEWER EASEMENT PER DOC. REC. IN BK.3261, PG.464; BK.3261, PG.464; & BK.3261, PG.482,5 O.R. TO BE VACATED (CONTAINING 1597 SQ. FT.)



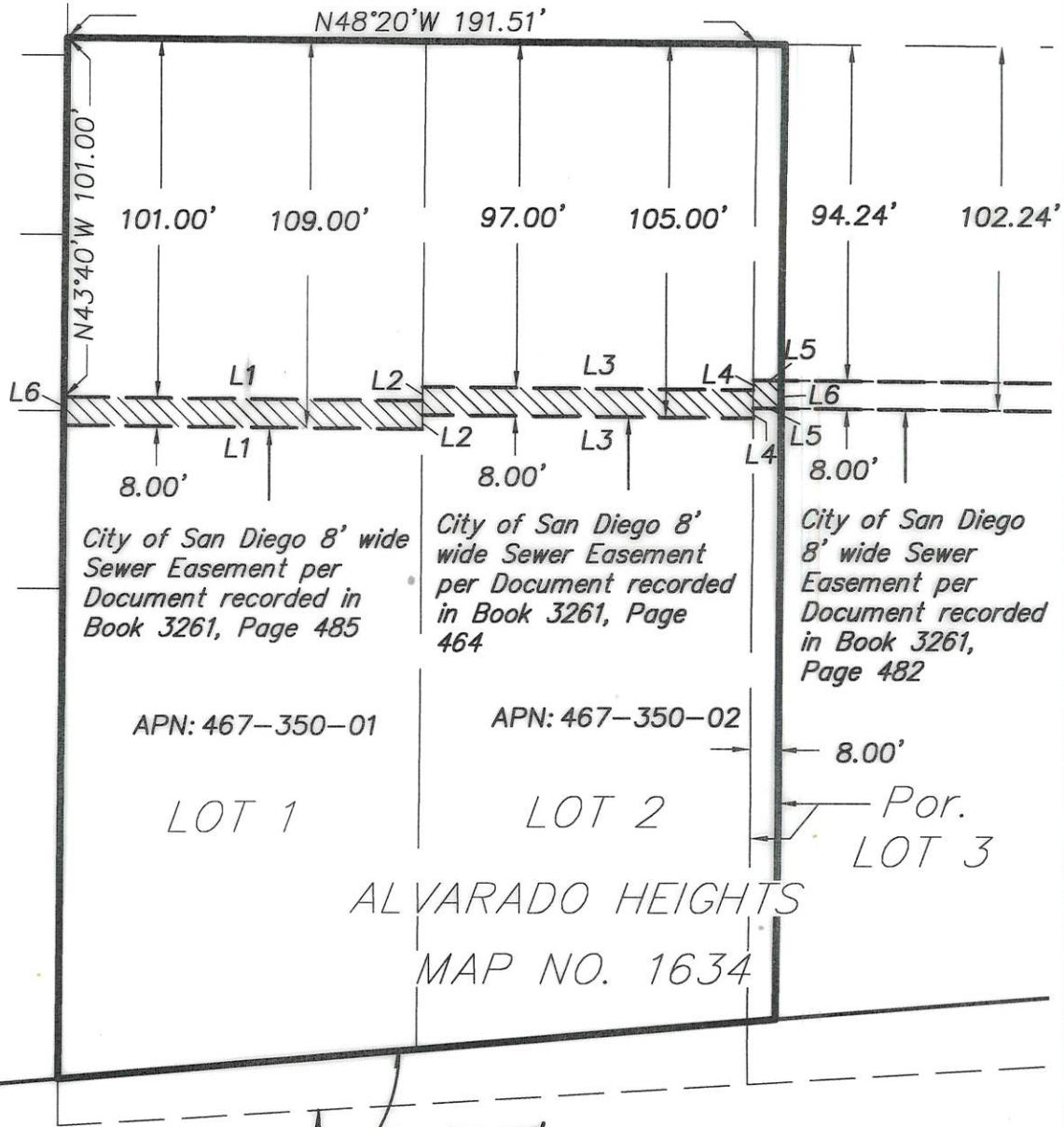
REFERENCE DWGS.

MAP NO.01634
5886-L4

MAP NO. 15933
LOT 1
BASIS OF BEARINGS

NOTE:
PROPERTY DISCHARGES WASTEWATER INTO PUBLIC SEWER IN ART STREET.

MAP NO. 1909



LINE DATA

NO.	BEARING	DISTANCE
L1	N48°20'E	99.75'
L2	N43°40'W	4.00'
L3	N48°20'E	91.76'
L4	N43°40'W	2.76'
L5	N48°20'E	8.00'
L6	N43°40'W	8.00'



State Hwy Relinquishment per Deed rec. 3-30-1953 in Bk.4800, Pg.502 and Deed rec. 6-2-1952 in Bk.4483, Pg.367, O.R. (City Dwg. 5886-L)

El Cajon Boulevard

BASIS OF BEARINGS

THE BASIS OF BEARINGS FOR THIS MAP IS THE NORTHWESTERLY PROPERTY LINE OF LOTS 1, 2 AND 3 AS SHOWN ON MAP NO. 1634, I.E. N 48°20'E


LANDMARK CONSULTING
9555 GENESEE AVENUE, SUITE 200
SAN DIEGO, CA 92121
(858) 587-8070


DEAN JOHNSON

DATE: 5/18/22
L.S. 4878

RESOLUTION NO.: CM-TH6
DATED: APRIL 26, 2022
ADOPTED: 2022-0225633
DOCUMENT NO.:
RECORDED: MAY 26, 2022

PUBLIC SEWER EASEMENT VACATION
OVER PORTIONS OF LOT 1, LOT 2, AND LOT
3 OF ALVARADO HEIGHTS MAP NO. 1634

DESCRIPTION	BY	APPROVED	DATE	FILMED	CITY OF SAN DIEGO, CALIFORNIA	P.T.S.
ORIGINAL	L.C.				SHEET 1 OF 1 SHEET	697943
					 FOR CITY LAND SURVEYOR	1858-6309
					5/23/2022 DATE	CCS 83 COORDINATES
						218-1749
						LAMBERT COORDINATES
						42563-B
STATUS						