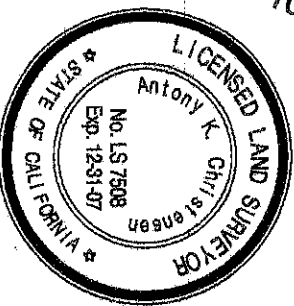
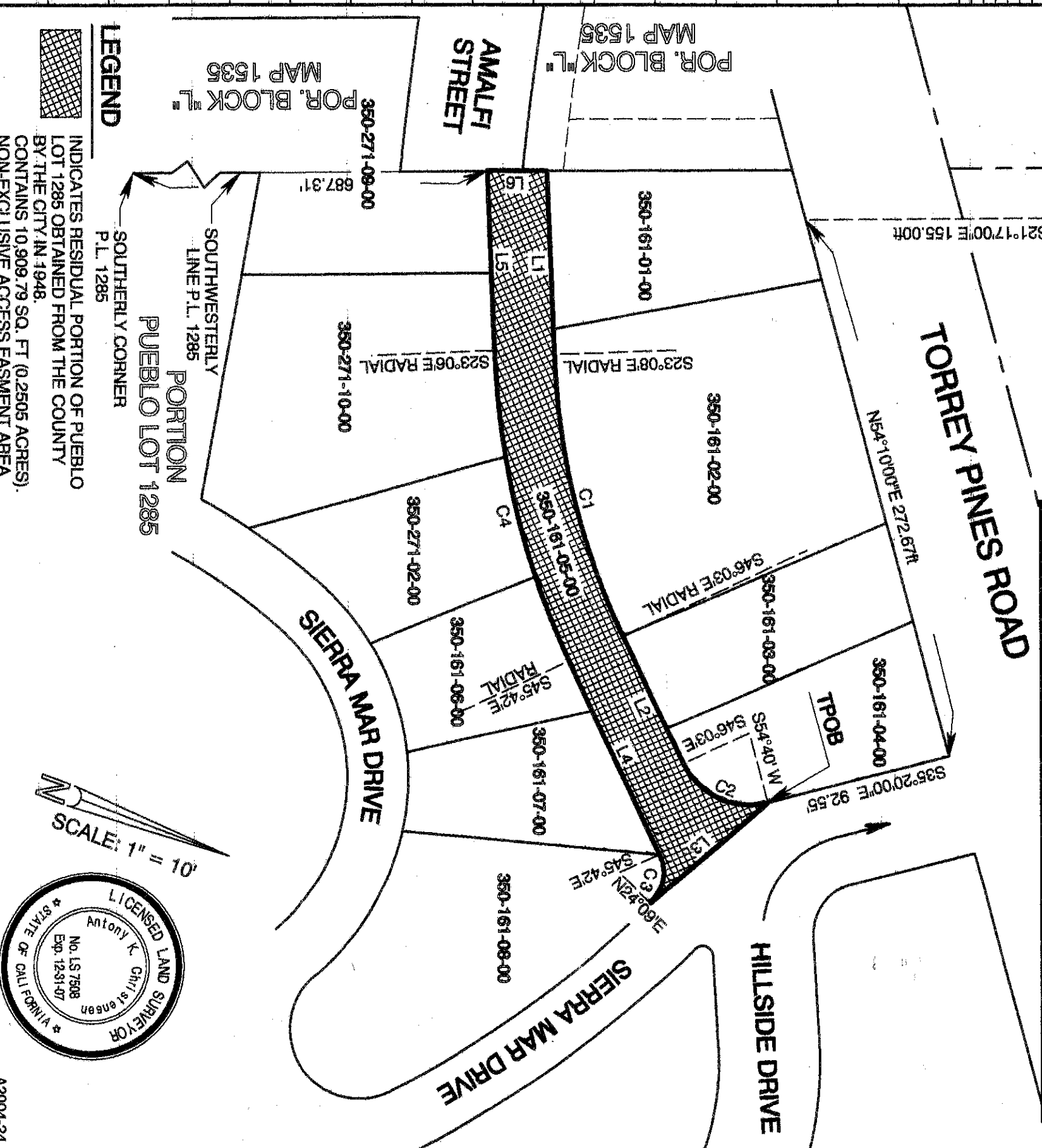
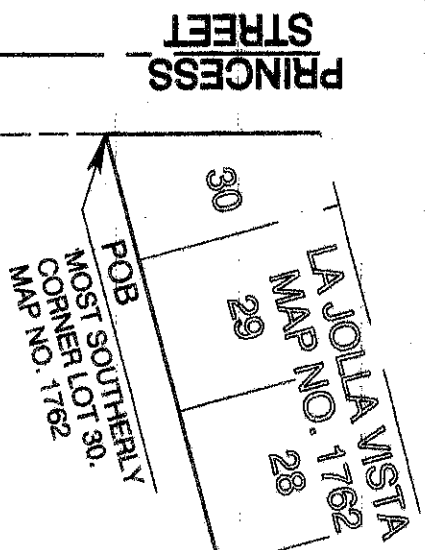


SEGMENT	BEARING	RADIUS	DELTA	LENGTH
L1	N66°52'00"E			90.37'
C1		357.43'	22°55'00"	142.96'
L2	N43°57'00"E			69.50'
C2		35.95'	79°17'00"	49.75'
L3	S62°02'12"E			76.30'
C3		21.42'	69°51'00"	26.11'
L4	S44°18'00"W			105.73'
C4		400.00'	22°36'00"	157.78'
L5	S66°54'00"W			88.24'
L6	N21°17'00"W			29.31'



INDICATES RESIDUAL PORTION OF PUEBLO LOT 1285 OBTAINED FROM THE COUNTY BY THE CITY IN 1948. CONTAINS 10,909.79 SQ. FT. (0.2505 ACRES). NON-EXCLUSIVE ACCESS EASEMENT AREA

CHRISTENSEN ENGINEERING & SURVEYING
 7888 SILVERTON AVENUE, SUITE J
 SAN DIEGO, CA 92126
 (858) 271-9901
Anthony K. Christensen
 ANTONY K. CHRISTENSEN
 L.S. 7508, EXPIRES 12-31-07

RESOLUTION No. R-305134
 ADOPTED: JULY 21, 2009

**AMALFI STREET
 NON-EXCLUSIVE ACCESS EASEMENT**

DESCRIPTION	BY	APPROVED	DATE	FILMED	W/O NO.	PTS.
ORIGINAL						
CITY OF SAN DIEGO, CALIFORNIA					SHEET 1 OF 1 SHEETS	
			FOR CITY ENGINEER		DATE	
			<i>Julie R. Fry</i>		10/13/2009	
			DIVISION HEAD		LAMBERT COORDINATES	
			SECTION HEAD		42613-B	
COMPLETE						