

BASIS OF BEARINGS

THE BASIS OF BEARINGS FOR THIS DRAWING IS THE CENTERLINE OF HAINES STREET AS SHOWN ON MAP NO. 5935, I.E. N14°50'04"W.

LEGEND

PUBLIC RIGHT OF WAY GRANTED PER MAP 895, VACATED (4709.04 SQUARE FEET)

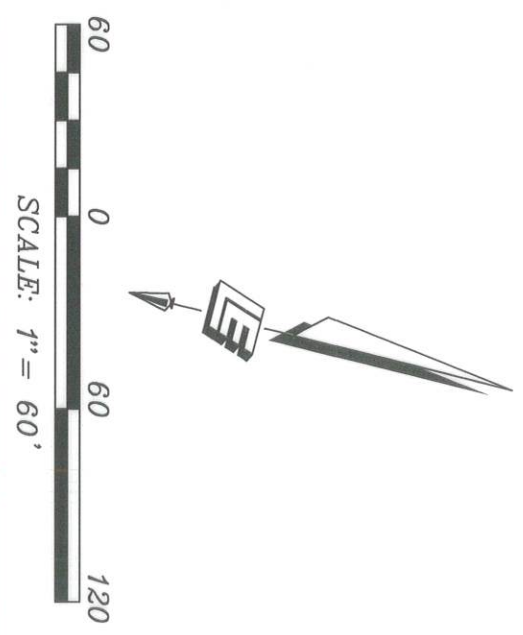
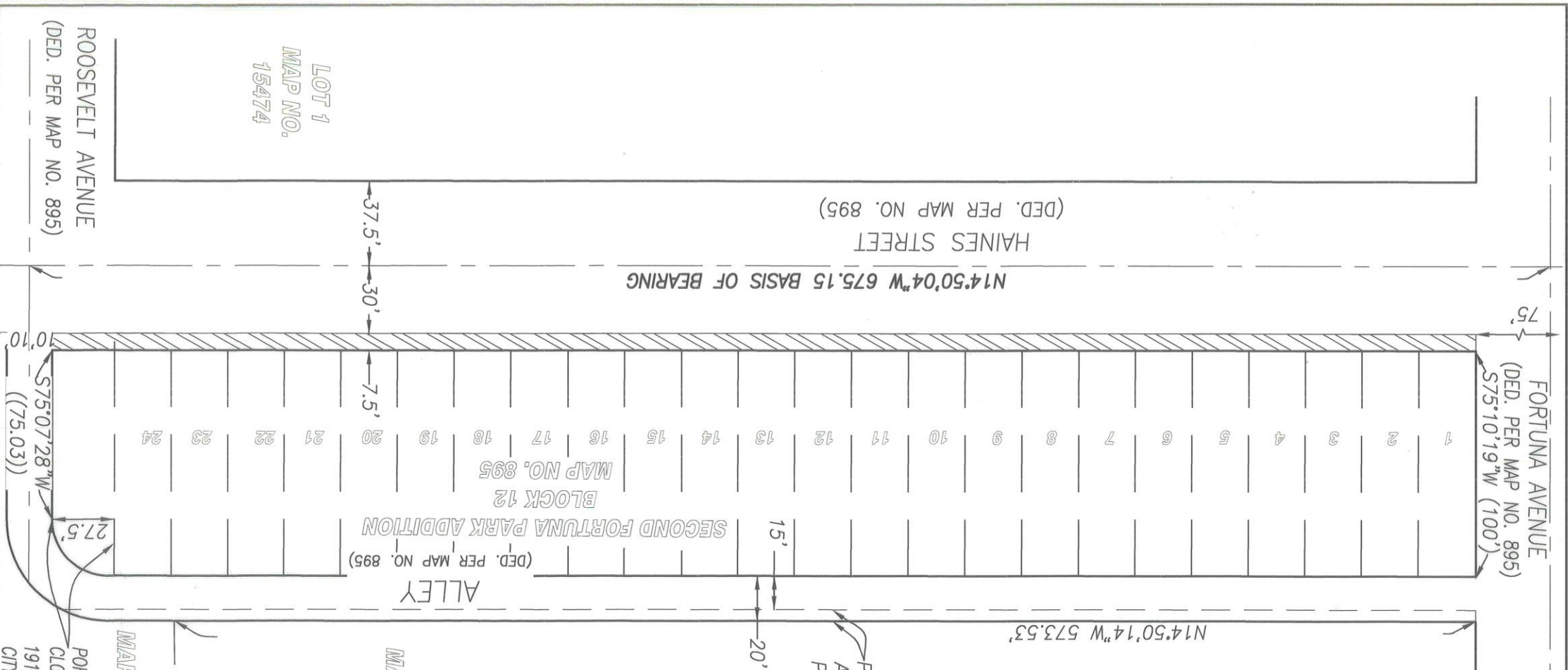
- THE LINE
- CENTERLINE
- RIGHT OF WAY
- LOT LINE
- RECORD DATA PER MAP 895
- RECORD DATA PER CITY DWG. 12755-D

REFERENCE DRAWINGS:

MAP NO. 895, CITY DWG. 12755-D, MAP NO. 5935, MAP NO. 6327, CR 39298, CR 41640

APN:

423-422-1 THRU 7, 9, 10, 13 THRU 15



LEPPERT ENGINEERING CORPORATION
5190 GOVERNOR DRIVE, S-205
SAN DIEGO, CA 92019 858-597-2001

John D. Leppert

JOHN D. LEPPERT R.C.E. 26283



PUBLIC RIGHT OF WAY VACATION
OVER A PORTION OF BLOCK 12 OF SECOND
FORTUNA PARK ADDITION MAP NO. 895

DESCRIPTION	BY	APPROVED DATE	FILMED
ORIGINAL	LEC		
CITY OF SAN DIEGO, CALIFORNIA			
SHEET 1 OF 1 SHEET			
FOR CITY ENGINEER		DATE	
<i>Andi R. R. 1/3</i>		5/30/2023	
STATUS			B001

42619-B

B001

PTS NO. 669397
I.O.: 24008664

1868-6255
CCS 83 COORDINATES
228-1695
NAD 27 COORDINATES