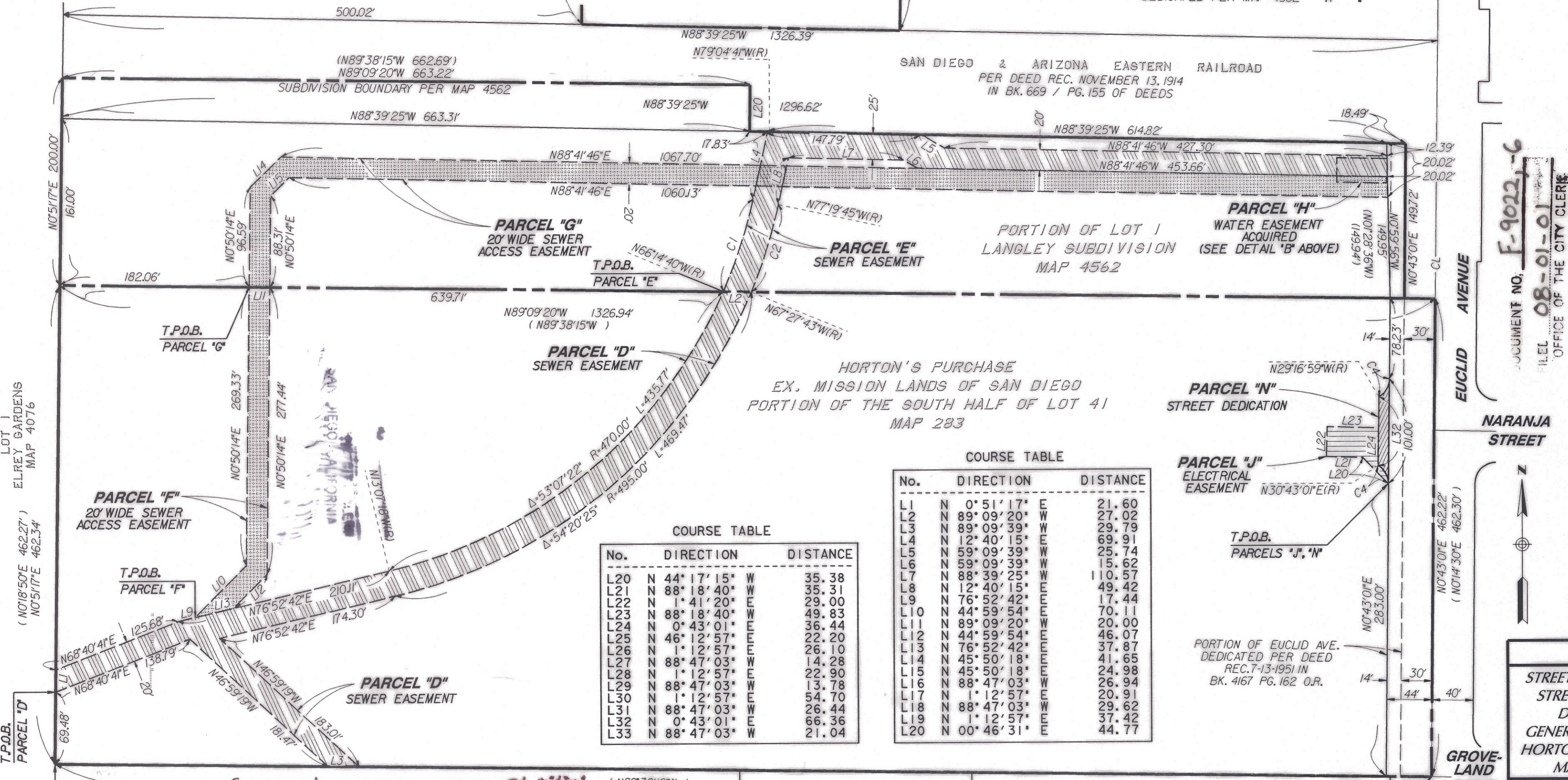
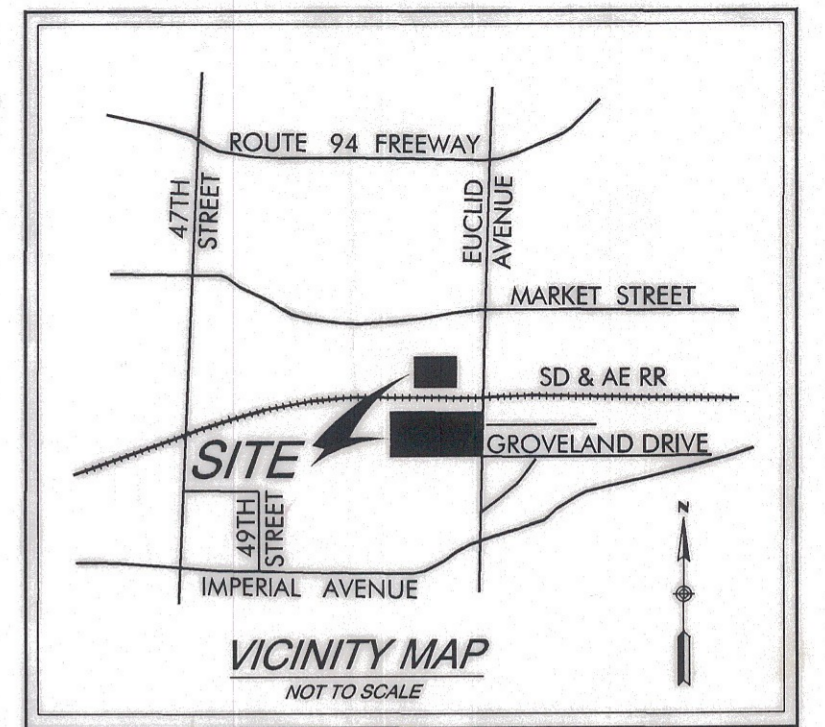
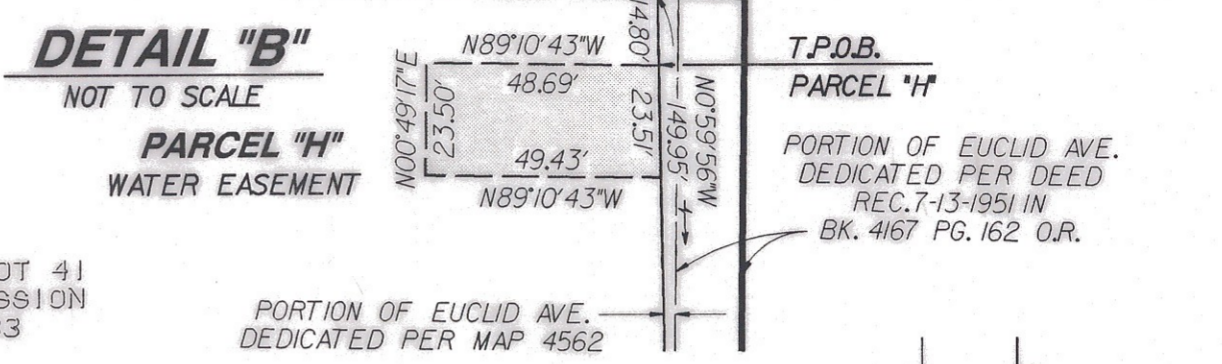


CURVE TABLE

No.	DELTA	RADIUS	ARC
C1	11° 05' 05"	470.00	90.93
C2	9° 52' 01"	495.00	85.25
C3	47° 02' 27"	20.00	16.42
C4	60° 00' 00"	20.00	20.94



LOT 1
ELFREY GARDENS
MAP 4076
(N01°18'50"E 462.27')
(N05°17'17"E 462.34')

DOCUMENT NO. F-9022-6
FILE NO. 08-01-01
OFFICE OF THE CITY CLERK
SAN DIEGO, CALIFORNIA

COURSE TABLE

No.	DIRECTION	DISTANCE
L20	N 44° 17' 15" W	35.38
L21	N 88° 18' 40" W	35.31
L22	N 1° 41' 20" E	29.00
L23	N 88° 18' 40" W	49.83
L24	N 0° 43' 01" E	36.44
L25	N 46° 12' 57" E	22.20
L26	N 1° 12' 57" E	26.10
L27	N 88° 47' 03" W	14.28
L28	N 1° 12' 57" E	22.90
L29	N 88° 47' 03" W	13.78
L30	N 1° 12' 57" E	54.70
L31	N 88° 47' 03" W	26.44
L32	N 0° 43' 01" E	66.36
L33	N 88° 47' 03" W	21.04

COURSE TABLE

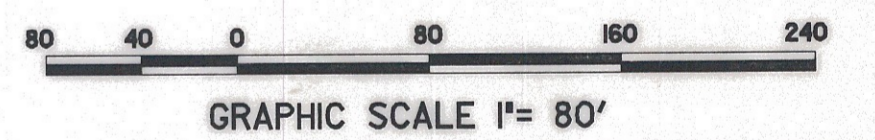
No.	DIRECTION	DISTANCE
L1	N 0° 51' 17" E	21.60
L2	N 89° 09' 20" W	27.02
L3	N 89° 09' 39" W	29.79
L4	N 12° 40' 15" E	69.91
L5	N 59° 09' 39" W	25.74
L6	N 59° 09' 39" W	15.62
L7	N 88° 39' 25" W	110.57
L8	N 12° 40' 15" E	49.42
L9	N 76° 52' 42" E	17.44
L10	N 44° 59' 54" E	70.11
L11	N 89° 09' 20" W	20.00
L12	N 44° 59' 54" E	46.07
L13	N 76° 52' 42" E	37.87
L14	N 45° 50' 18" E	41.65
L15	N 45° 50' 18" E	24.98
L16	N 88° 47' 03" W	26.94
L17	N 1° 12' 57" E	20.91
L18	N 88° 47' 03" W	29.62
L19	N 1° 12' 57" E	37.42
L20	N 00° 46' 31" E	44.77

- LEGEND**
- INDICATES SEWER EASEMENT ACQUIRED, PARCEL 'D' - 0.520 AC. & PARCEL 'E' - 0.375 AC.
 - INDICATES 20' WIDE SEWER ACCESS EASEMENT ACQUIRED, PARCEL 'F' - 0.152 AC. & PARCEL 'G' - 0.546 AC.
 - INDICATES WATER EASEMENT ACQUIRED, PARCEL 'H' - 0.026 AC. & PARCEL 'I' - 0.023 AC.
 - INDICATES ELECTRICAL EASEMENT ACQUIRED, PARCEL 'J' - 0.038 AC. & PARCEL 'K' - 0.030 AC.
 - INDICATES GENERAL UTILITY EASEMENT ACQUIRED, PARCEL 'L' - 0.002 AC. & PARCEL 'M' - 0.025 AC.
 - INDICATES STREET DEDICATION, PARCEL 'N' - 0.018 AC. & PARCEL 'O' - 0.015 AC.
 - T.P.O.B. INDICATES TRUE POINT OF BEGINNING
 - P.O.B. INDICATES POINT OF BEGINNING
 - () INDICATES RECORD DATA PER MAP 4562
 - (()) INDICATES RECORD DATA PER MAP 6506

ASSESSORS PARCEL NUMBERS
548-020-12, 548-020-13, 548-020-24

REFERENCE DRAWINGS
MAP 4562, MAP 6506

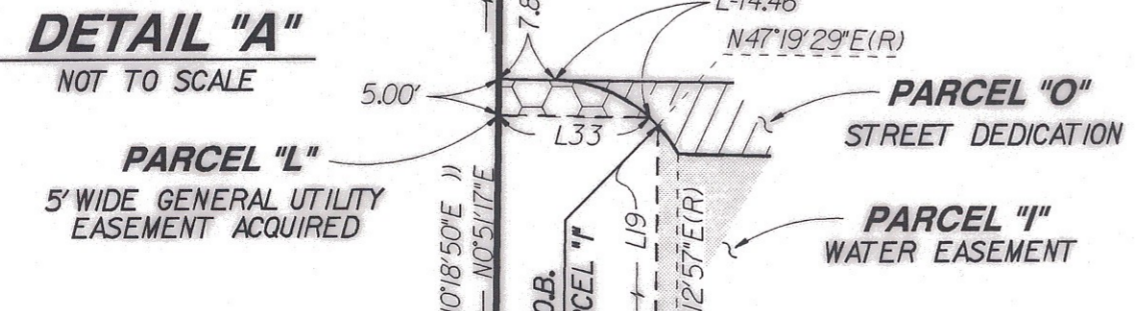
BASIS OF BEARINGS
THE BASIS OF BEARINGS IS THE LINE BETWEEN MON. NO. 1168 AND MON. NO. 1174 OF RECORD OF SURVEY MAP NO. 14492. I.E., N21°18'07"E



General utilities Esmt. Pals. L, E, M
Rec. 8-3-2001 Doc. # 2001-0548949
Sewer, water & electrical esmts.
Doc. # 2001-0548818

STREET DEDICATIONS Pals. N, O
REC. 8-15-2001 Doc. # 2001-0581047
SEWER ACCESS ESMTS. F, G Doc. # 2001-0581050

RICK ENGINEERING COMPANY
5620 Phars Road,
San Diego,
California 92110-2590
(619) 291-0707



SURVEYOR OF WORK
Robert G. Schoettmer 2-20-2001
ROBERT G. SCHOETTNER, LS 4324 DATE



J-13284A

STREET DEDICATION - EUCLID AVE., NORTH OF GROVELAND DR.
STREET DEDICATION - MARKET STREET, WEST OF EUCLID AVE.
DRAINAGE, SEWER, ACCESS, WATER, ELECTRICAL AND
GENERAL UTILITY EASEMENTS IN THE SOUTH HALF OF LOT 41 OF
HORTON'S PURCHASE MAP 283, LOT 1 OF LANGLEY SUBDIVISION
MAP 4562, AND LOT 1 BROOKS SUBDIVISION MAP 6506

CITY OF SAN DIEGO, CALIFORNIA		W.O. NO. 990727
SHEET 1 OF 3 SHEETS		
FOR CITY ENGINEER	DATE 7/12/01	
DESCRIPTION	BY	APPROVED DATE FILMED
ORIGINAL	DS	
		1836-6303 CCS 83 COORDINATES
		196-1743 LAMBERT COORDINATES
		00019-I-C