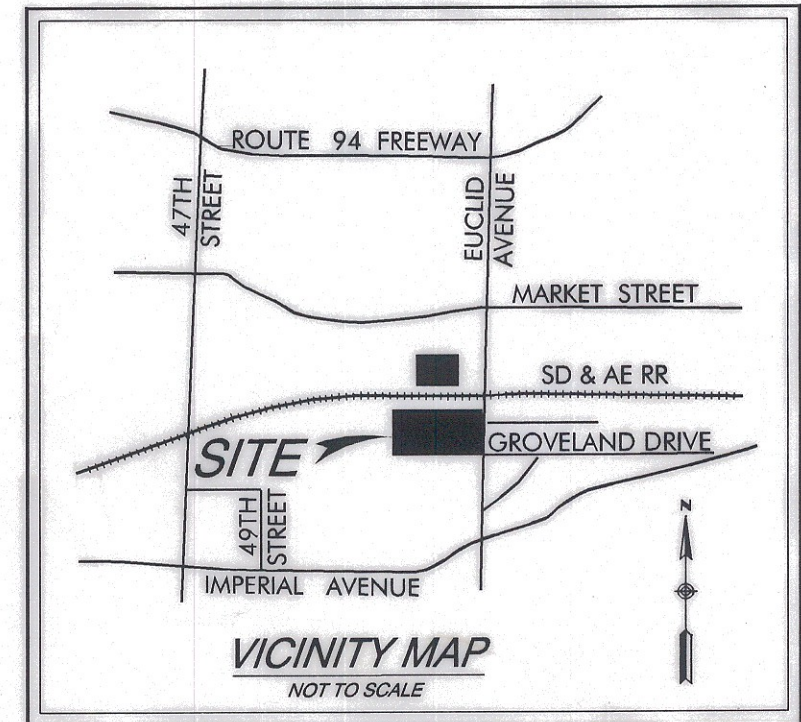


SAN DIEGO & ARIZONA EASTERN RAILROAD

MARKET STREET
PORTION OF MARKET STREET DEDICATED PER MAP 6506

COURSE TABLE

No.	DIRECTION	DISTANCE
L1	N 88° 39' 26" W	48.49
L2	N 36° 35' 14" E	44.39
L3	N 36° 35' 14" E	36.39
L4	N 43° 23' 40" W	21.76
L5	N 0° 50' 22" E	14.00
L6	N 22° 10' 51" E	10.00
L7	N 0° 49' 56" E	12.00
L8	N 88° 41' 46" W	78.65
L9	N 1° 33' 44" E	22.72
L10	N 2° 46' 40" W	59.59
L11	N 89° 10' 43" W	27.62
L12	N 0° 50' 14" E	74.56
L13	N 89° 00' 03" E	11.33



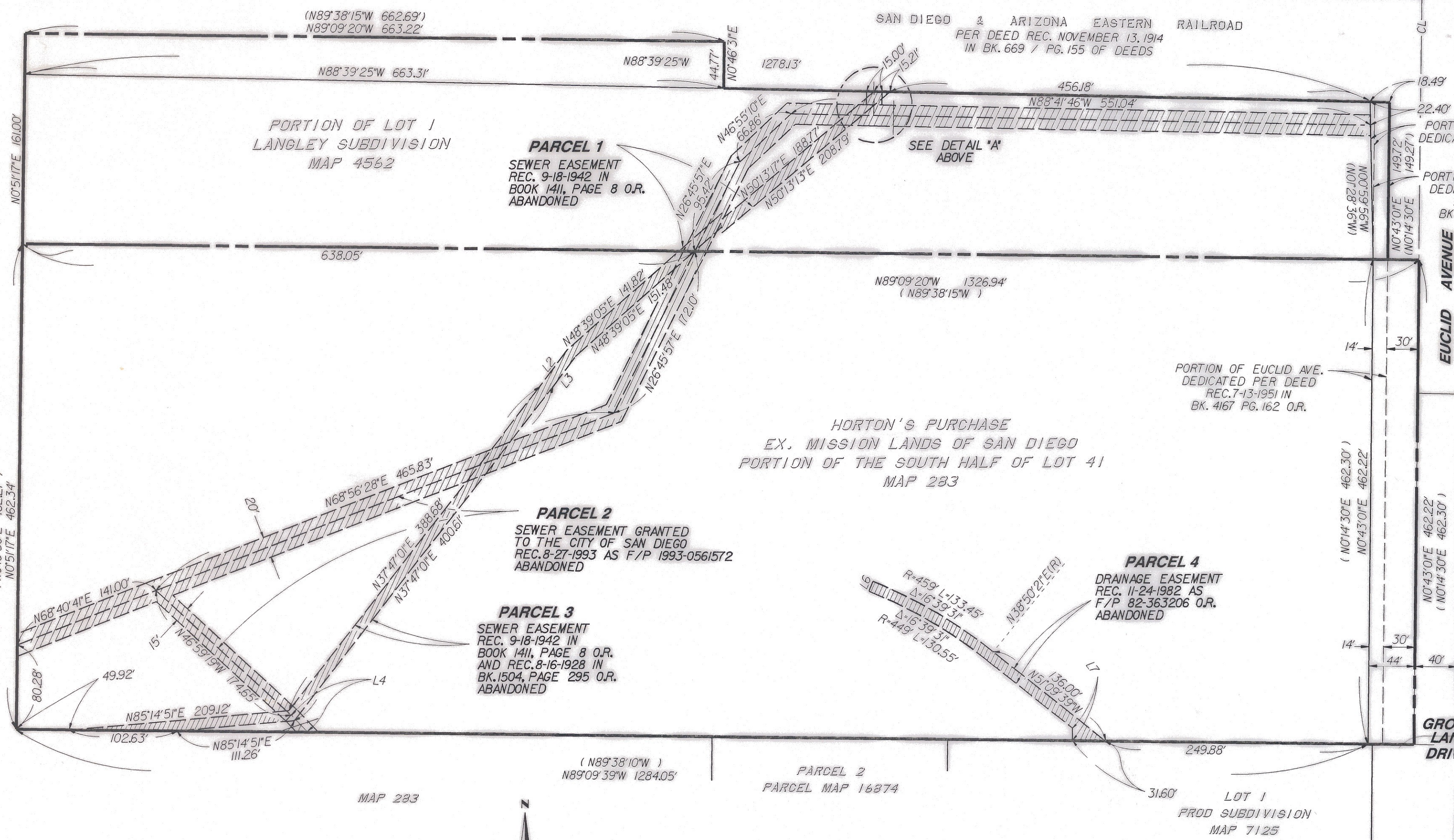
PARCEL 2
SEWER EASEMENT GRANTED TO THE CITY OF SAN DIEGO REC. 8-27-1993 AS F/P 1993-0561572 ABANDONED

PARCEL 1
SEWER EASEMENT REC. 9-18-1942 IN BOOK 141, PAGE 8 O.R. AND REC. 8-16-1928 IN BK. 1504, PAGE 293 O.R. ABANDONED

DETAIL "A"
NOT TO SCALE



PORTION LOT 41 RANCHO MISSION MAP 283



LEGEND
 INDICATES SEWER AND DRAINAGE EASEMENTS - ABANDONED, PARCELS 1, 2, 3, & 4
 T.P.O.B. INDICATES TRUE POINT OF BEGINNING
 P.O.B. INDICATES POINT OF BEGINNING
 () INDICATES RECORD DATA PER MAP 4562

REFERENCE DRAWINGS
 MAP 4562
 CITY DWG. NO. 1004-D, 6741-L, 20374-D, 26285-D, 26362-D

BASIS OF BEARINGS
 THE BASIS OF BEARINGS IS THE LINE BETWEEN MON. NO. 1168 AND MON. NO. 1174 OF RECORD OF SURVEY MAP NO. 14492, I.E. N218°07'E



SURVEYOR OF WORK
Robert G. Schoettmer 2-28-2001
 ROBERT G. SCHOETTNER, LS 4324 DATE

J-13284A
 ABANDONMENT OF SEWER AND DRAINAGE EASEMENTS ACROSS A PORTION OF THE SOUTH HALF OF LOT 41 OF MAP 283 AND LOT 1 OF LANGLEY SUBDIVISION MAP 4562

CITY OF SAN DIEGO, CALIFORNIA		SHEET 3 OF 3 SHEETS		W.O. NO. 990727
<i>Lee Danner</i> FOR CITY ENGINEER		7/12/01 DATE		
DESCRIPTION	BY	APPROVED	DATE	FILMED
ORIGINAL				MM 05
				1836-6303 CCS '85 COORDINATES
				196-1743 LAMBERT COORDINATES
00019-3-C				

RICK ENGINEERING COMPANY
 5620 Friars Road, San Diego, California 92110-2596
 (619) 291-0707

