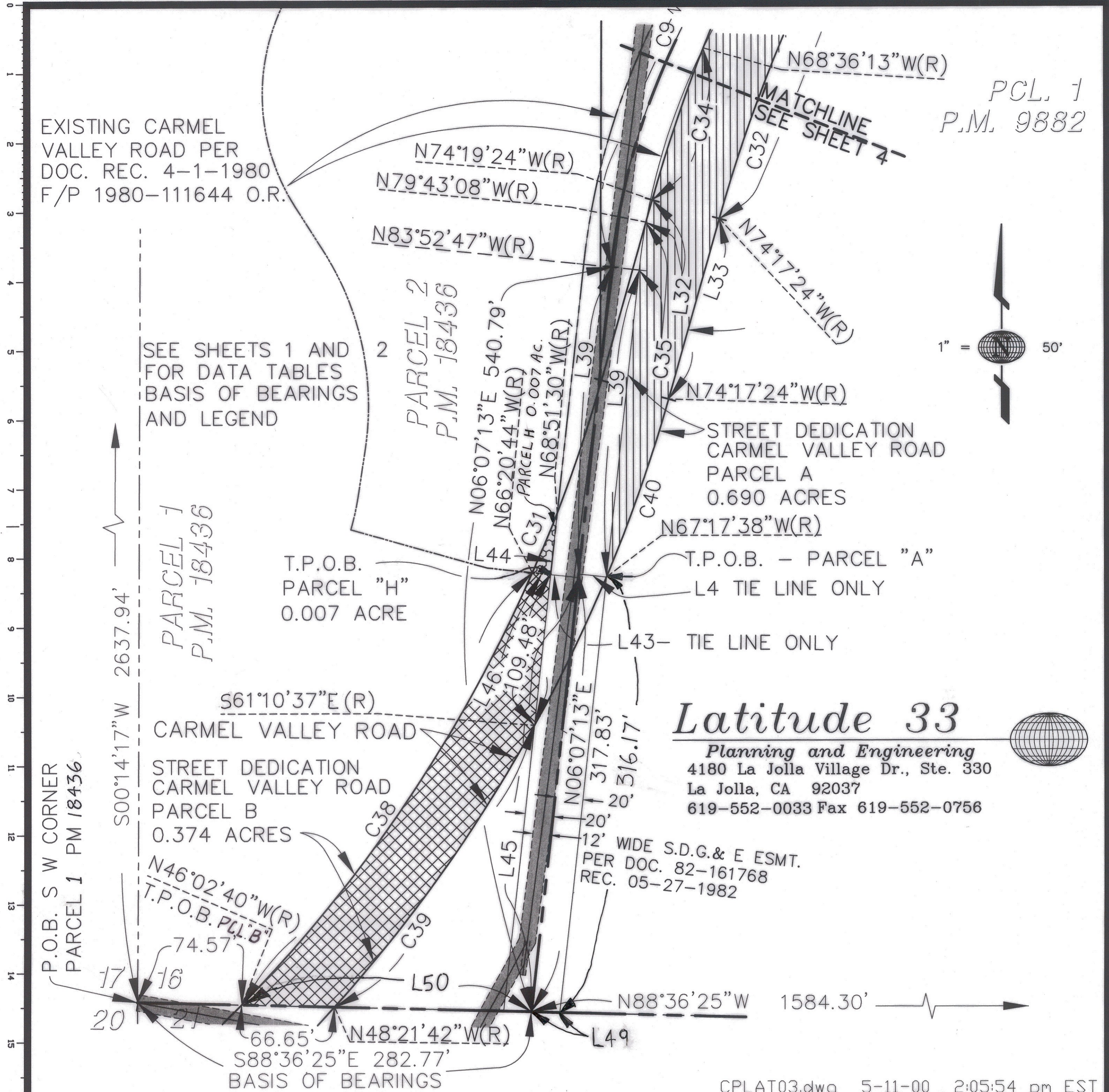


EXHIBIT 'B'



PARCELS A, C, F & G RECORDED 7/21/00 DOC# 2000-0385589  
 PARCEL D RECORDED 7/21/00 DOC.# 2000-0385617  
 PARCEL H RECORDED 7/21/00 DOC.# 2000-0385609  
 PARCELS B & E RECORDED 7/21/00 DOC.# 2000-0385599  
 JOINT USE AGREEMENT RECORDED 7/28/00 DOC# 2000-0400911

*C. John Eardensohn* 6.5.00  
 C. JOHN EARDENSOHN L.S. 5278 DATE  
 REGISTRATION EXPIRES 12-31-03

STREET DEDICATION — CARMEL VALLEY ROAD — SOUTH OF BLACK MOUNTAIN ROAD  
 STREET DEDICATION — BLACK MOUNTAIN ROAD — NORTH OF CARMEL VALLEY ROAD

DESCRIPTION	BY	APPROVED	DATE	FILMED	CITY OF SAN DIEGO, CALIFORNIA PLANNING AND DEVELOPMENT REVIEW DEPARTMENT SHEET 3 OF 10 SHEETS		T.M. NO.
ORIGINAL	LAT33			AUG 22 00	<i>[Signature]</i> FOR CITY ENGINEER	7-19-00 DATE	990326
	RVH	✓	7/21/00	AUG 22 00			1924-6267 CCS '83 COORDINATES
COMPLETE							284-1707 LAMBERT COORDINATES