

BEARING DATA TABLE		CURVE DATA TABLE				
No.	Bearing	Distance	No.	Delta	Radius	Length
L1	S05°46'08"W	21.01'	C1	18°11'42"	110.00'	34.93'
L2	S05°46'08"W	12.02'	C2	18°11'42"	90.00'	28.58'
L3	N15°00'35"E	10.00'	C3	00°31'29"	494.00'	45.32'
L4	N69°47'53"E	9.93'	C4	80°45'33"	20.00'	28.19'
L5	N74°59'25"W	33.71'	C5	01°16'16"	490.00'	10.87'
L6	N74°59'25"W	23.17'	C6	48°57'16"	20.00'	17.09'
L7	N05°45'09"E	11.33'	C7	99°16'05"	20.00'	34.65'
L8	N74°59'25"W	33.39'	C8	100°30'13"	20.00'	35.08'
L9	N14°57'30"E	12.00'	C9	18°34'23"	110.00'	35.66'
L10	N14°57'30"E	3.00'	C10	25°00'45"	90.00'	39.29'
L11	N05°45'09"E	15.20'	C11	31°47'18"	20.00'	11.10'
L12	N74°59'25"W	2.11'	C12	80°45'33"	20.00'	28.19'
			C13	80°44'34"	20.00'	28.18'
			C14	80°44'34"	20.00'	28.18'



*Ronald C. Parker*  
RONALD C. PARKER  
LS 4312  
DATE 2-29-00

- INDICATES STREET DEDICATION  
PARCEL 1 CONTAINS 0.02 ACRES  
696 SQUARE FEET
- INDICATES STREET DEDICATION  
PARCEL 2 CONTAINS 0.06 ACRES  
2,420 SQUARE FEET
- INDICATES STREET DEDICATION  
PARCEL 3 CONTAINS 0.07 ACRES  
3,217 SQUARE FEET
- INDICATES STREET DEDICATION  
PARCEL 4 CONTAINS 0.03 ACRES  
1,260 SQUARE FEET
- INDICATES STREET DEDICATION  
PARCEL 5 CONTAINS 0.11 ACRES  
4,766 SQUARE FEET
- INDICATES STREET DEDICATION  
PARCEL 6 CONTAINS 0.02 ACRES  
774 SQUARE FEET

- ( ) PER MAP NO. 11564
- [ ] PER PARCEL MAP NO. 3676
- { } PER MAP NO. 6007
- (( )) PER MAP NO. 6275
- [[ ]] PER MAP NO. 9570

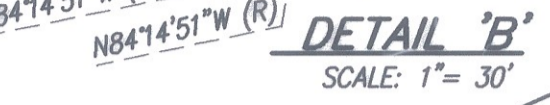
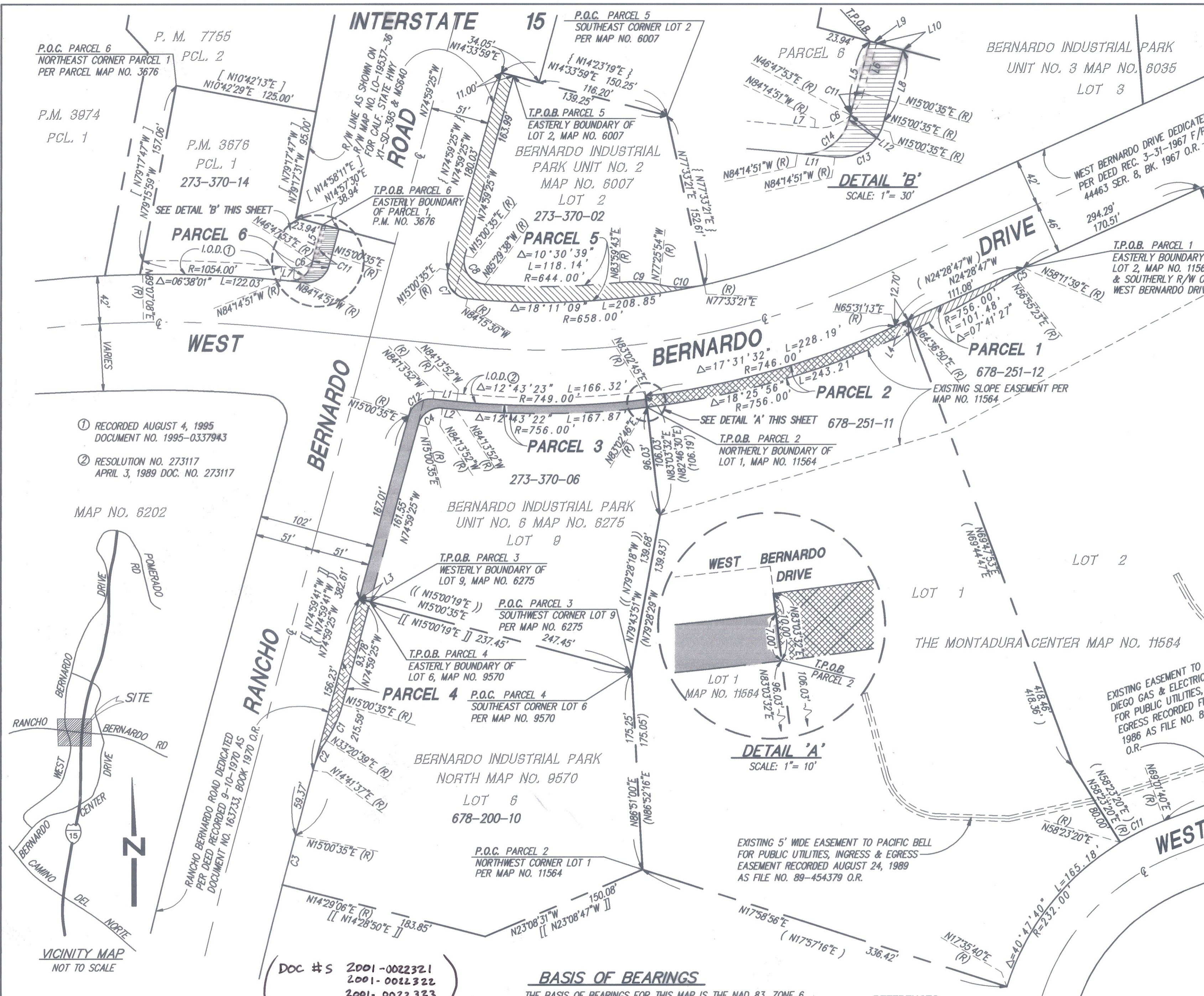
**STREET DEDICATION**  
WEST BERNARDO DRIVE, WESTERLY OF  
INTERSTATE 15

**STREET DEDICATION**  
RANCHO BERNARDO ROAD, WESTERLY OF  
INTERSTATE 15

CITY OF SAN DIEGO, CALIFORNIA  
SHEET 1 OF 1 SHEET  
*R. Hernandez* 01-01-01  
FOR CITY ENGINEER DATE

W.O. NO. 990818  
1952-6305  
CCS 83 COORDINATES  
312-1745  
LAMBERT COORDINATES  
**00021-C**

BM COMPLETE



**BASIS OF BEARINGS**

THE BASIS OF BEARINGS FOR THIS MAP IS THE NAD 83, ZONE 6,  
GRID BEARING POINT NO'S. 350 AND 399 AS SAID STATIONS ARE  
PUBLISHED IN THE SAN DIEGO HORIZONTAL CONTROL BOOK.  
QUOTED BEARINGS FROM REFERENCE MAPS OR DEEDS MAY OR  
MAY NOT BE IN TERMS OF SAID SYSTEM.  
THE COMBINED SCALE FACTOR AT STATION NO. 399 IS 0.9999448.  
GRID DISTANCE = GROUND DISTANCE X COMBINED SCALE FACTOR.

**REFERENCES**

PARCEL MAP NO. 3676, 3974 & 7755  
MAP NO.'S 6007, 6035, 6202, 6275, 9570 & 11564  
R/W 11-SD-15 & 395  
IMPROVEMENT PLANS 10556-D, 12771-D, 14047-D,  
16630-D, 17963-D, 12916-D, 12915-D, 12864-D,  
25892-D, S-918 & 30113-D

DOC #S 2001-0022321  
2001-0022322  
2001-0022323  
1-16-2001

DOC #S 2001-0037187  
2001-0037188  
1-23-2001

TITLE	STREET DEDICATION
DATE	02/28/2001
SCALE	1" = 60'
PLOTTING VIEW	HOME_DESIGNER_SLK_PRC1_MOR
SHEET	1 OF 2 SHEETS

**NOLTE**  
BEYOND ENGINEERING  
15090 AVENUE OF SCIENCE, SUITE 101 SAN DIEGO, CA. 92128  
858.385.0500 TEL. 858.385.0400 FAX WWW.NOLTE.COM

- ① RECORDED AUGUST 4, 1995  
DOCUMENT NO. 1995-0337943
- ② RESOLUTION NO. 273117  
APRIL 3, 1989 DOC. NO. 273117

