

N 6°24'29"W  
15.00'

15' WIDE DRAINAGE  
EASEMENT

PARCEL 7  
PARCEL MAP NO. 17996

DETAIL 6  
N. T. S.

EXISTING IRREVOCABLE OFFER TO  
DEDICATE PUBLIC STREET PER P.M. 17996

15' WIDE DRAINAGE  
EASEMENT

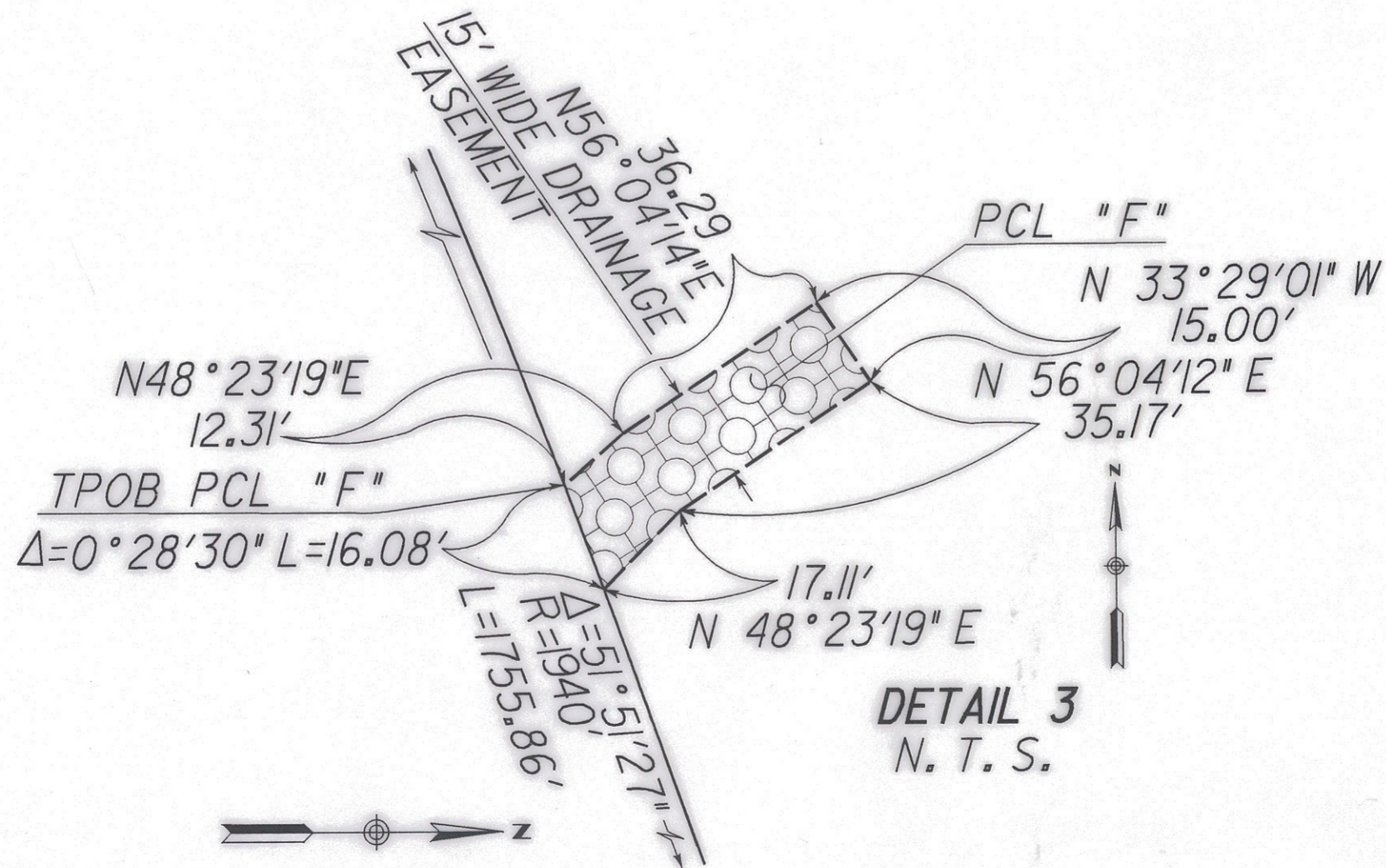
PCL "G"

15.00'  
N47°14'33"W

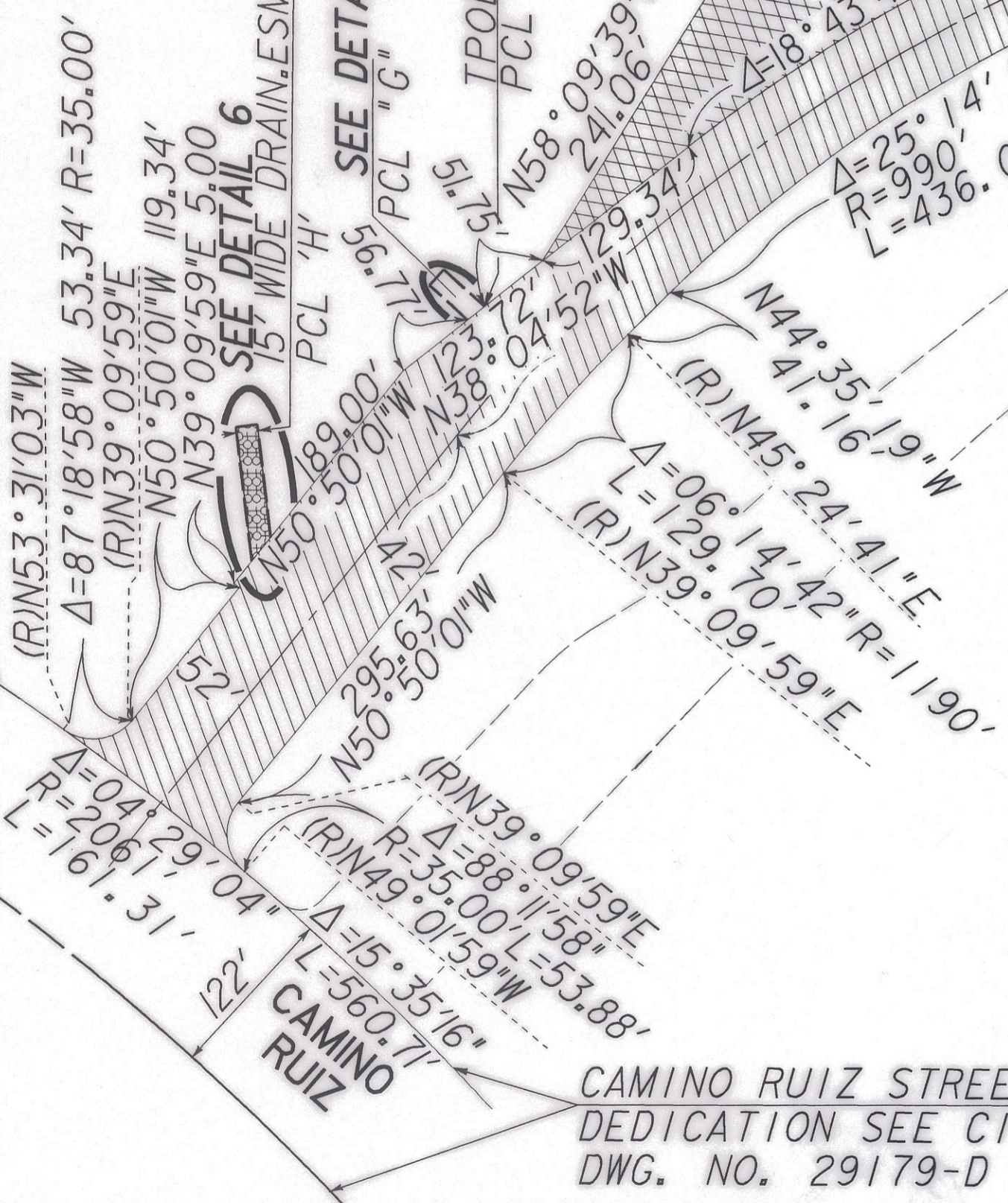
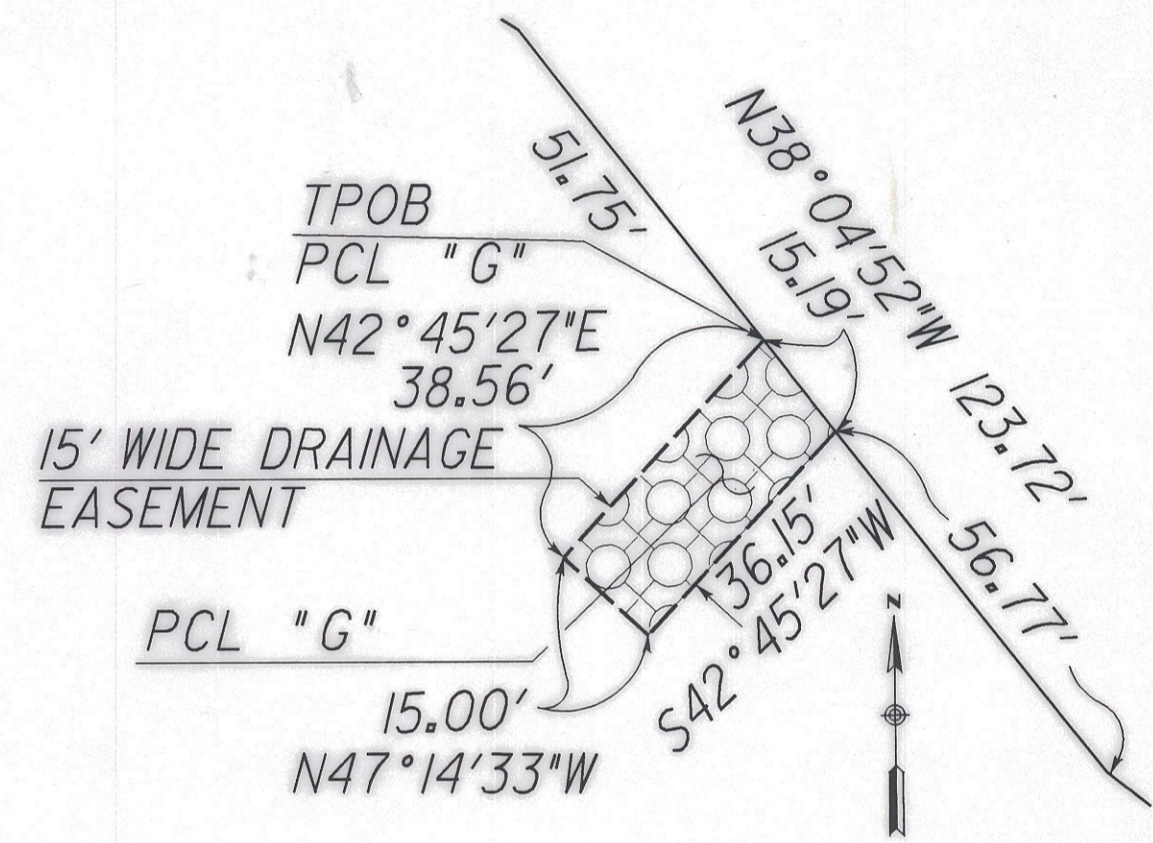
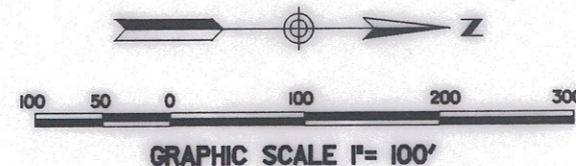
DETAIL 4  
N. T. S.

EXIST. IRREVOCABLE  
OFFER TO DEDICATE  
RIGHT OF WAY  
PER PM 17996

PARCEL 7  
PARCEL MAP NO. 17996



DETAIL 3  
N. T. S.



CAMINO RUIZ STREET  
DEDICATION SEE CITY  
DWG. NO. 29179-D

J-13041C				
<b>STREET DEDICATION-SAN DIEGUITO ROAD AND PEDESTRIAN AND NON-MOTOR VEHICULAR RIGHT OF WAY NORTHWESTERLY OF CAMINO RUIZ DRAINAGE AND ACCESS EASEMENT IN PARCEL 7 P.M. 17996</b>				
CITY OF SAN DIEGO, CALIFORNIA PLANNING AND DEVELOPMENT REVIEW SHEET 3 OF 3 SHEETS				W.O. NO. <u>TM 95-073 980039</u>
FOR CITY ENGINEER		DATE <u>11-1-00</u>		
DESCRIPTION	BY	APPROVED	DATE	FILMED
ORIGINAL		<i>[Signature]</i>	<u>1/5/01</u>	FEB 19 01 FEB 19 01
				1932-6279 NAD 83 COORDINATES
				292-1719 LAMBERT COORDINATES
<i>completed</i>				00025-3-C