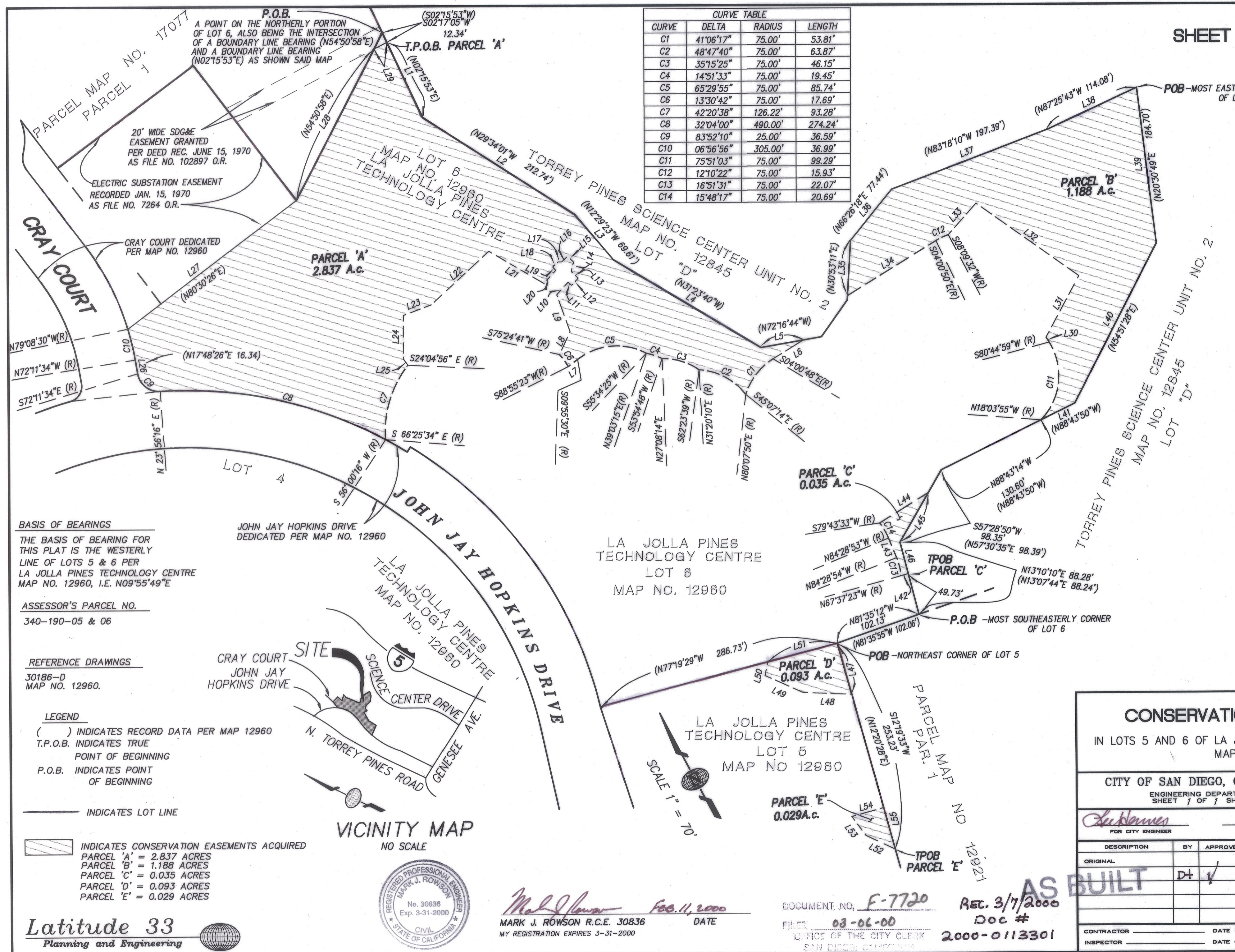


CURVE TABLE			
CURVE	DELTA	RADIUS	LENGTH
C1	41°06'17"	75.00'	53.81'
C2	48°47'40"	75.00'	63.87'
C3	35°15'25"	75.00'	46.15'
C4	14°51'33"	75.00'	19.45'
C5	65°29'55"	75.00'	85.74'
C6	13°30'42"	75.00'	17.69'
C7	42°20'38"	126.22'	93.28'
C8	32°04'00"	490.00'	274.24'
C9	83°52'10"	25.00'	36.59'
C10	06°56'56"	305.00'	36.99'
C11	75°51'03"	75.00'	99.29'
C12	12°10'22"	75.00'	15.93'
C13	16°51'31"	75.00'	22.07'
C14	15°48'17"	75.00'	20.69'

LINE TABLE		
LINE	LENGTH	BEARING
L1	97.97	S 02°17'05" W
L2	212.72	S 29°33'45" E
L3	69.59	S 12°28'53" E
L4	201.41	S31°23'49" E
L5	50.91	S72°17'19" E
L6	42.11	S85°59'13" W
L7	13.99	S80°04'30" W
L8	29.53	N52°59'48" E
L9	45.99	N07°59'48" E
L10	19.65	N70°05'44" E
L11	5.67	S24°59'46" E
L12	10.95	N70°27'33" E
L13	11.35	N18°10'47" W
L14	11.71	N42°18'57" E
L15	9.70	N20°02'50" W
L16	9.54	S74°51'59" W
L17	4.18	N62°36'06" W
L18	8.63	S75°01'13" W
L19	5.41	S15°02'55" E
L20	20.72	S70°05'44" W
L21	74.98	N32°00'12" W
L22	92.00	S74°59'48" W
L23	35.00	N83°00'12" W
L24	51.00	S27°59'48" W
L25	8.99	S08°00'12" E
L26	16.35	N17°48'26" E
L27	248.99	N80°30'38" E
L28	199.92	N54°51'00" E
L29	17.11	N89°47'44" E
L30	7.00	N03°54'58" W
L31	82.05	N56°00'09" E
L32	148.01	N27°00'12" W
L33	49.16	S68°59'48" W
L34	122.47	S85°59'10" W
L35	64.74	N30°59'24" E
L36	77.47	N 66°24'48" E
L37	193.73	S 83°18'46" E
L38	117.67	S 87°18'19" E
L39	184.74	S 20°29'20" W
L40	211.72	S 54°51'04" W
L41	44.47	N 88°43'14" W
L42	8.78	N 78°21'44" W
L43	25.07	N 05°31'06" E
L44	67.36	N 85°45'40" E
L45	67.18	S 57°28'51" W
L46	38.55	S 13°10'10" W
L47	62.67	S 12°19'33" W
L48	57.09	N 60°00'00" W
L49	48.99	N 38°00'10" W
L50	16.32	N 38°58'38" E
L51	84.79	S 77°19'10" E
L52	37.99	N 37°00'00" W
L53	28.00	N09°00'00" W
L54	39.00	S78°00'00" E
L55	51.07	S 12°19'33" W



BASIS OF BEARINGS
 THE BASIS OF BEARING FOR THIS PLAT IS THE WESTERLY LINE OF LOTS 5 & 6 PER LA JOLLA PINES TECHNOLOGY CENTRE MAP NO. 12960, I.E. N09°55'49"E

ASSESSOR'S PARCEL NO.
 340-190-05 & 06

REFERENCE DRAWINGS
 30186-D
 MAP NO. 12960.

LEGEND
 () INDICATES RECORD DATA PER MAP 12960
 T.P.O.B. INDICATES TRUE POINT OF BEGINNING
 P.O.B. INDICATES POINT OF BEGINNING

INDICATES LOT LINE
 INDICATES CONSERVATION EASEMENTS ACQUIRED
 PARCEL 'A' = 2.837 ACRES
 PARCEL 'B' = 1.188 ACRES
 PARCEL 'C' = 0.035 ACRES
 PARCEL 'D' = 0.093 ACRES
 PARCEL 'E' = 0.029 ACRES



Mark J. Rowson Feb. 11, 2000
 MARK J. ROWSON R.C.E. 30836 DATE
 MY REGISTRATION EXPIRES 3-31-2000

DOCUMENT NO. **F-7720** REC. 3/7/2000
 FILED **03-06-00** Doc #
 OFFICE OF THE CITY CLERK
 SAN DIEGO, CALIFORNIA 2000-0113301

CONSERVATION EASEMENT				
IN LOTS 5 AND 6 OF LA JOLLA PINES TECHNOLOGY CENTRE MAP NO. 12960				
CITY OF SAN DIEGO, CALIFORNIA ENGINEERING DEPARTMENT SHEET 1 OF 1 SHEET			W.O. NO. 990966	
FOR CITY ENGINEER		DATE 3-6-00		
DESCRIPTION	BY	APPROVED	DATE	FILMED
ORIGINAL			3/8/00	AUG 22 00 AUG 22 00
				1906-6255 NAD 83 C
				266-1695 LAMBERT COORDINATES
CONTRACTOR		DATE STARTED		
INSPECTOR		DATE COMPLETED		
00026-C				

Latitude 33
 Planning and Engineering

AS BUILT P&DR/LDR M/S 508