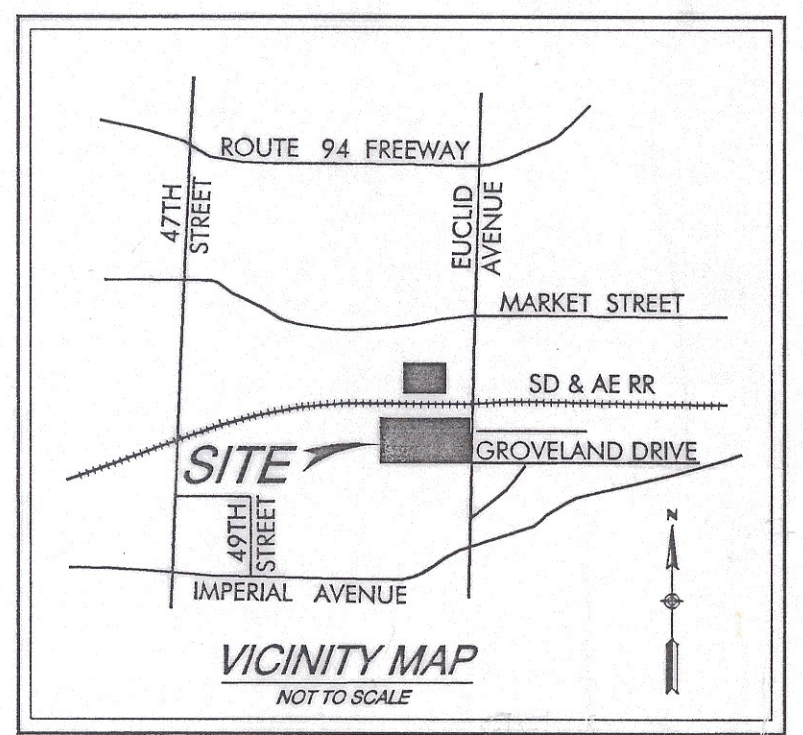


DOC # 2001-0527167
7-27-2001

DOCUMENT NO. **F-9016**
FILED: **07-27-01**
OFFICE OF THE CITY CLERK
SAN DIEGO, CALIFORNIA



LEGEND

- INDICATES OPEN SPACE EASEMENT ACQUIRED, PARCEL "A" = 2.600 AC
- INDICATES OPEN SPACE EASEMENT ACQUIRED, PARCEL "B" = 0.519 AC
- INDICATES OPEN SPACE EASEMENT ACQUIRED, PARCEL "C" = 0.386 AC

T.P.O.B. INDICATES TRUE POINT OF BEGINNING
P.O.B. INDICATES POINT OF BEGINNING
() INDICATES RECORD DATA PER MAP 4562, UNLESS OTHERWISE NOTED

ASSESSORS PARCEL NUMBERS

548-020-12, 548-020-13, 548-020-24

REFERENCE DRAWINGS

MAP NOS. 4562 AND 283,
DWG. NOS. 1003-D, 11334-D, AND 26285-D

BASIS OF BEARINGS

THE BASIS OF BEARINGS IS THE LINE BETWEEN MON. NO. 1168 AND MON. NO. 1174 OF RECORD OF SURVEY MAP NO. 14492. I.E., N2°18'07"E



SURVEYOR OF WORK

Robert G. Schoettmer 6-14-2001
ROBERT G. SCHOETTNER, LS 4324 DATE

J-13284A

OPEN SPACE EASEMENT
IN THE SOUTH HALF OF LOT 41 OF HORTON'S PURCHASE MAP 283 AND LOT 1 OF LANGLEY SUBDIVISION MAP 4562

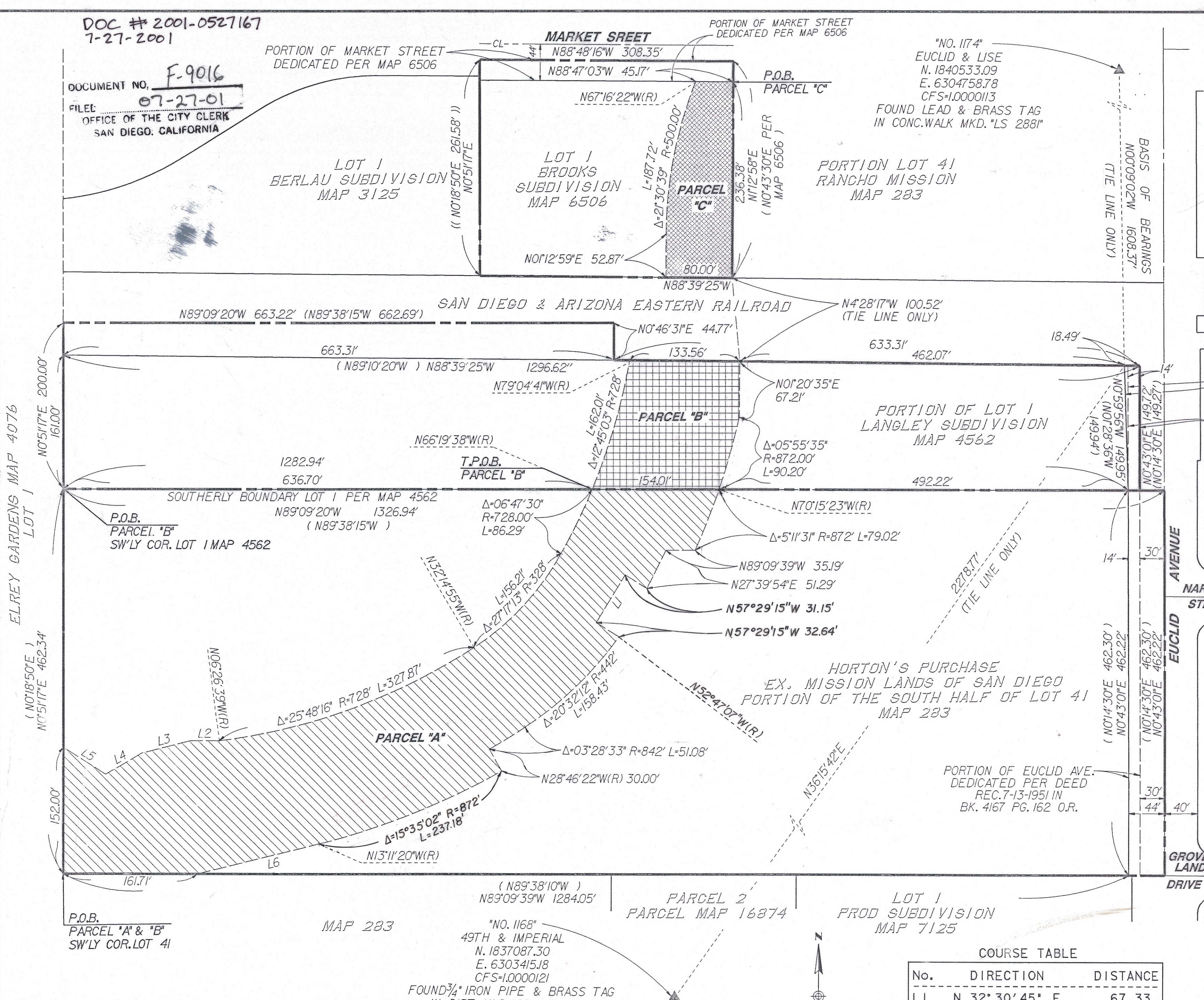
CITY OF SAN DIEGO, CALIFORNIA
SHEET 1 OF 1 SHEETS
W.O. NO. 990727

Robert G. Schoettmer 7/12/01
FOR CITY ENGINEER DATE

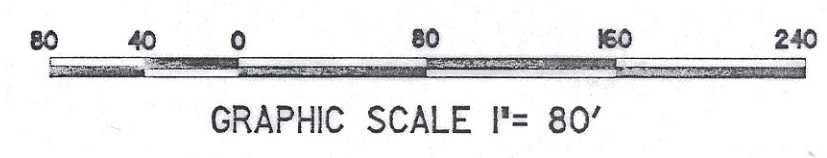
DESCRIPTION	BY	APPROVED	DATE	FILMED
ORIGINAL				SEP 19 01
	BM	✓	7/30/01	SEP 19 01

1836-6303
CCS 83 COORDINATES
196-1743
LAMBERT COORDINATES

COMPLETE 00030-C



RICK ENGINEERING COMPANY
13-JUN-2001
5620 Friars Road, San Diego, California 92110-2596
(619) 291-0707



COURSE TABLE

No.	DIRECTION	DISTANCE
L1	N 32° 30' 45" E	67.33
L2	N 89° 08' 43" W	34.62
L3	N 76° 18' 12" E	60.50
L4	N 60° 41' 47" E	50.38
L5	N 56° 34' 57" W	60.19
L6	N 76° 48' 40" E	149.33