

APN: 305-021-12

PARCEL 1
PM 1171B

1" = 50'

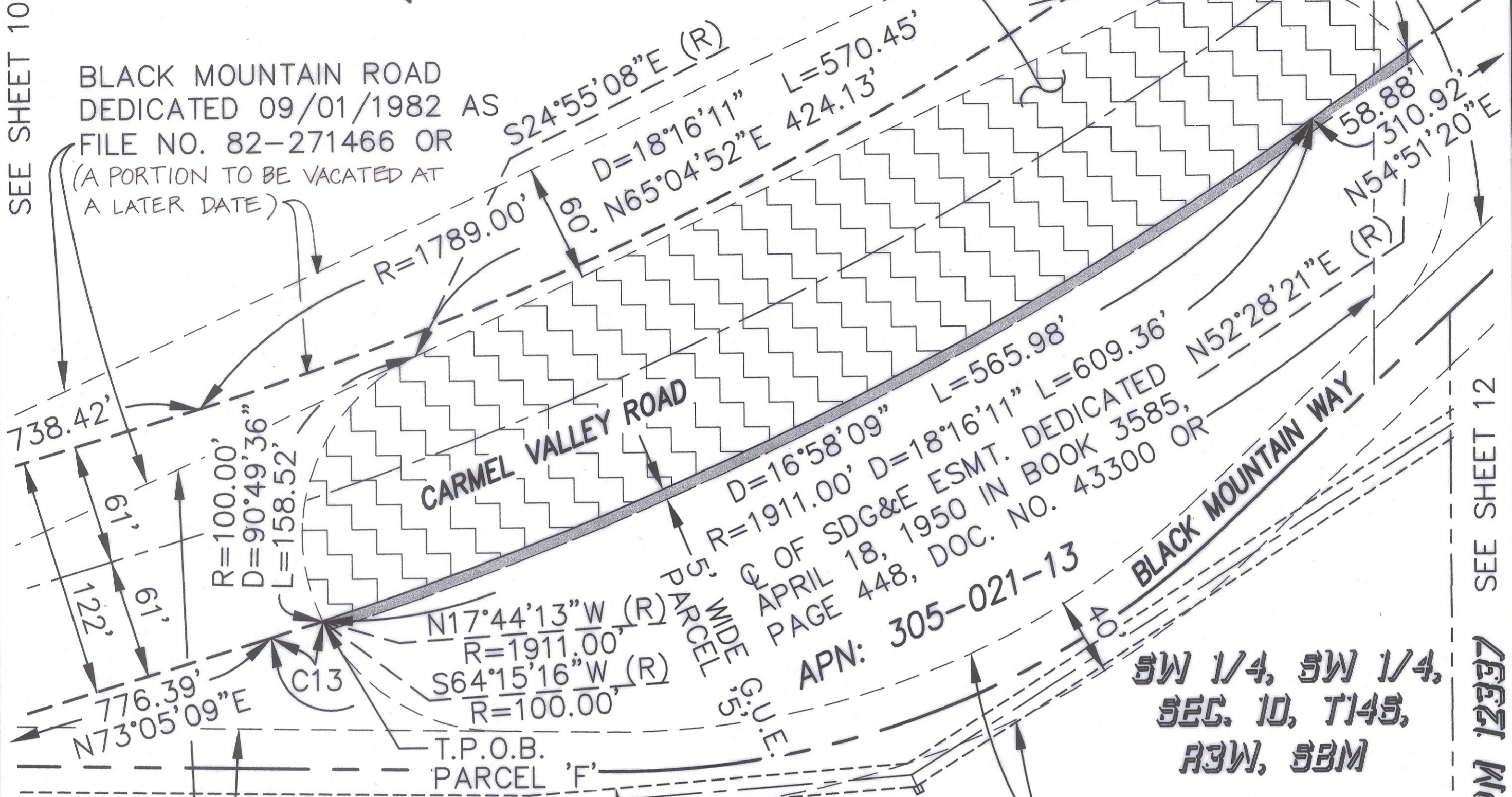
CARMEL VALLEY RD.
STREET DEDICATION
PARCEL 'F'
AREA: 1.428 ACRES

BLACK MOUNTAIN ROAD
DEDICATED 09/01/1982 AS PARCEL 'G'
FILE NO. 82-271466 OR

T.P.O.B.

SEE SHEET 10

BLACK MOUNTAIN ROAD
DEDICATED 09/01/1982 AS
FILE NO. 82-271466 OR
(A PORTION TO BE VACATED AT
A LATER DATE)



APN: 305-021-02
BLACK MOUNTAIN WAY
DEDICATED 09/01/1982
AS FILE NO. 82-271466
OR

12' WIDE SDG&E ESMT.
DEDICATED PER DOC.
RECORDED 07/13/1976
AS FILE NO.
76-219200 OR

40' WIDE ROADWAY
ESMT. DEDICATED PER
BOARD OF
SUPERVISORS MINUTES
DATED FEB. 27, 1886,
BK 7, P. 200, O.S. 57
ALSO KNOWN AS BLACK
MOUNTAIN WAY

Latitude 33

Planning and Engineering
4933 Paramount Drive, 2nd Floor
San Diego, CA 92123
858-751-0633 Fax 858-751-0634



H:\400\482.10\MAPS\PLATS\CVR-PL11.dwg 7/8/2003 5:50:01 PM PST

CURVE TABLE			
CURVE	DELTA	LENGTH	RADIUS
C13	00°49'22"	27.44'	1911.00'

RECORDING DATA ON SHEET 1

C. John Eardensohn 7-14-03
C. JOHN EARDENSOHN L.S. 5278 DATE
REGISTRATION EXPIRES 12-31-03

STREET DEDICATION - CARMEL VALLEY ROAD GENERAL UTILITY EASEMENT NORTH OF STATE ROUTE 56

DESCRIPTION	BY	APPROVED	DATE	FILMED
ORIGINAL	LAT33			MAR 9 '03
	RVA			MAR 9 '03

CITY OF SAN DIEGO, CALIFORNIA
DEVELOPMENT REVIEW DEPARTMENT
SHEET 11 OF 12 SHEETS

See Hennes 9-16-03
FOR CITY ENGINEER DATE

W.O. NO. 991086

1930-6271
CCS '83 COORDINATES

290-1711
LAMBERT COORDINATES

00031-11-C

AS BUILT

SEE SHEET 12
PARCEL 2 PM 12337