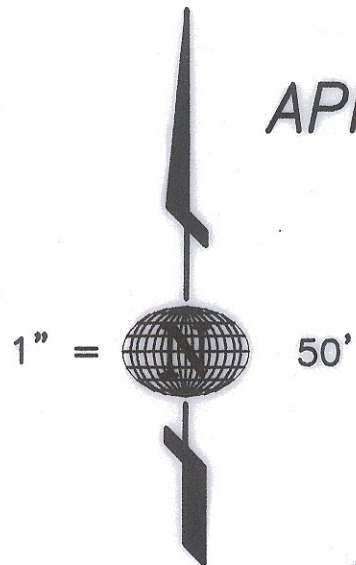


CURVE TABLE			
CURVE	DELTA	LENGTH	RADIUS
C3	03°02'13"	51.41'	970.00'
C4	00°09'01"	2.54'	970.00'
C5	00°21'40"	11.28'	1789.00'
C6	02°15'53"	30.31'	766.93'
C7	03°11'14"	57.30'	1030.00'
C8	00°57'44"	16.29'	970.00'

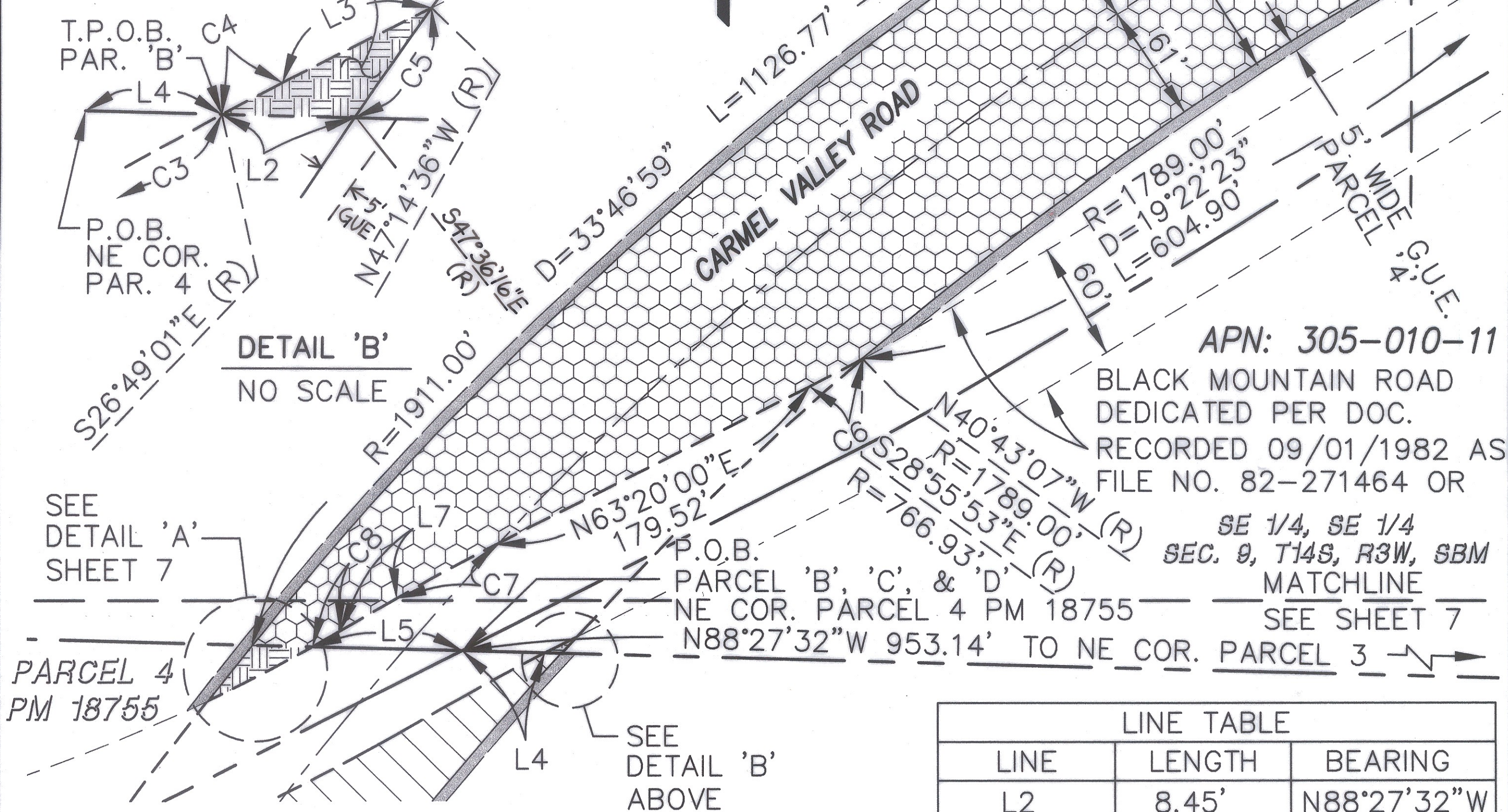
PARCEL 1
PM 11718

CARMEL VALLEY RD.
STREET DEDICATION
PARCEL 'D'
AREA: 3.121 ACRES

APN: 305-010-22



CARMEL VALLEY RD.
STREET DEDICATION
PARCEL 'B'
AREA: 0.001 AC.



DETAIL 'B'
NO SCALE

APN: 305-010-11

BLACK MOUNTAIN ROAD
DEDICATED PER DOC.
RECORDED 09/01/1982 AS
FILE NO. 82-271464 OR

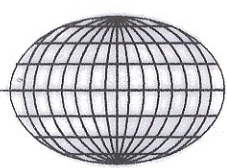
SE 1/4, SE 1/4
SEC. 9, T14S, R3W, SBM
MATCHLINE

SEE SHEET 7

LINE TABLE		
LINE	LENGTH	BEARING
L2	8.45'	N88°27'32"W
L3	15.44'	N63°20'00"E
L4	42.04'	N88°27'32"W
L5	76.01'	N88°27'32"W
L6	31.11'	N88°27'32"W
L7	33.09'	N60°08'46"E

Latitude 33

Planning and Engineering
4933 Paramount Drive, 2nd Floor
San Diego, CA 92123
858-751-0633 Fax 858-751-0634



PARCEL 3
PM 18971

H:\400\482.10\MAPS\PLATS\CVR-PL08.dwg 7/8/2003 5:46:16 PM PST

RECORDING DATA ON SHEET 1

C. John Eardensohn 7.14.03
C. JOHN EARDENSOHN L.S. 5278 DATE
REGISTRATION EXPIRES 12-31-03

STREET DEDICATION - CARMEL VALLEY ROAD
GENERAL UTILITY EASEMENT
NORTH OF STATE ROUTE 56

DESCRIPTION	BY	APPROVED	DATE	FILMED	CITY OF SAN DIEGO, CALIFORNIA DEVELOPMENT SERVICES DEPARTMENT SHEET 8 OF 12 SHEETS	W.O. NO. 991086
ORIGINAL	LAT33			MAR 9 '04	<i>See Dennis</i> FOR CITY ENGINEER	1930-6271 CCS '83 COORDINATES
	RVA					9-16-03 DATE
AS BUILT						00031-8-C