

CURVE TABLE			
CURVE	DELTA	LENGTH	RADIUS
C9	10°37'56"	191.13'	1030.00'
C14	04°25'53"	138.37'	1789.00'

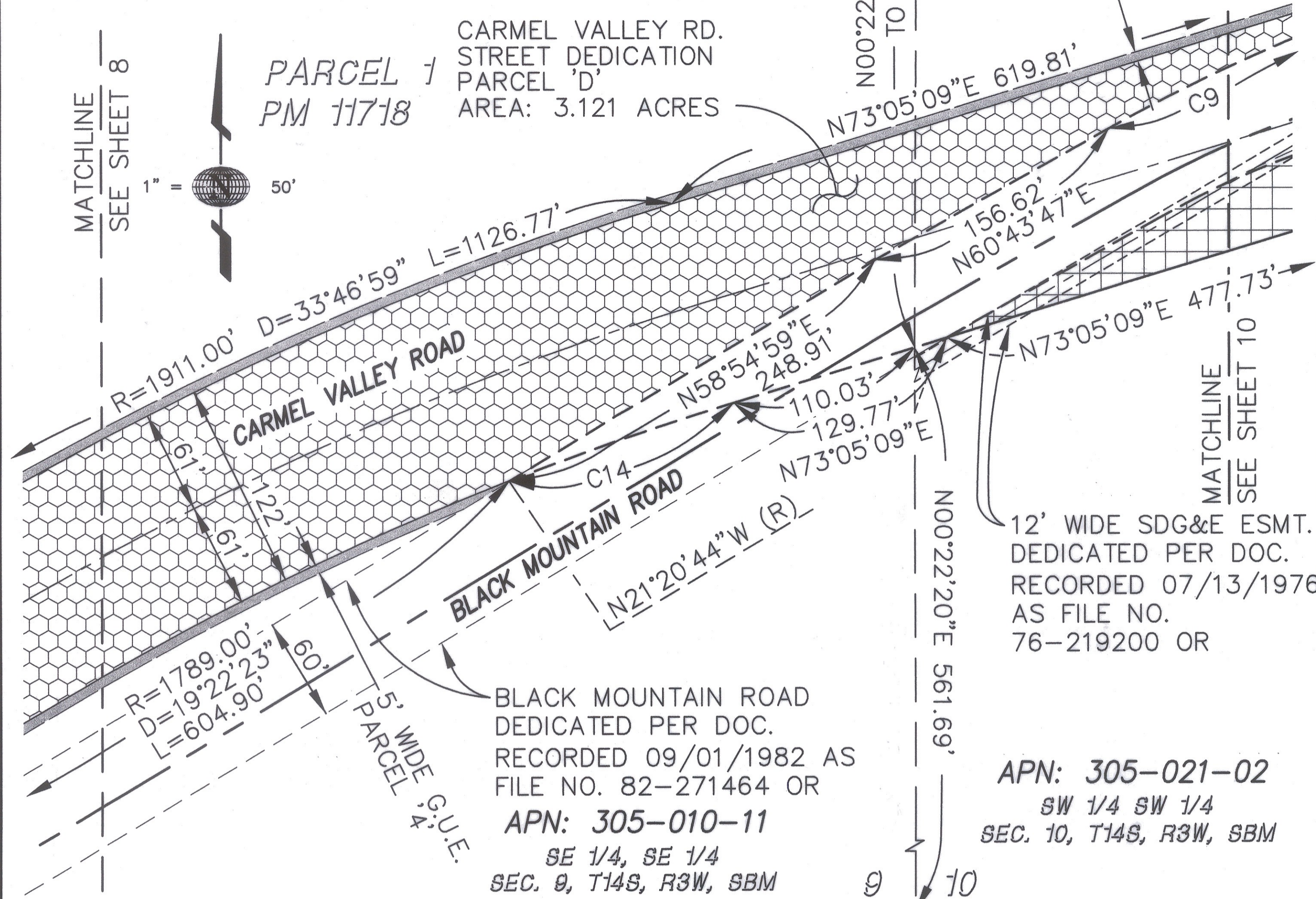
APN: 305-010-22, 23 & 305-021-12

CARMEL VALLEY RD.
STREET DEDICATION
PARCEL 'D'
AREA: 3.121 ACRES

PARCEL 1
PM 11718

MATCHLINE
SEE SHEET 8

1" = 50'



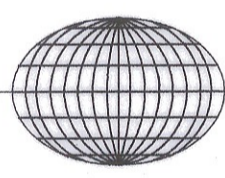
12' WIDE SDG&E ESMT.
DEDICATED PER DOC.
RECORDED 07/13/1976
AS FILE NO.
76-219200 OR

APN: 305-021-02
SW 1/4 SW 1/4
SEC. 10, T14S, R3W, SBM

P.O.B.
PARCEL 'E', 'F', 'G' & 'H'
NE CORNER OF PAR. 3
PM 18971

Latitude 33

Planning and Engineering
4933 Paramount Drive, 2nd Floor
San Diego, CA 92123
858-751-0633 Fax 858-751-0634



PARCEL 3
PM 18971

H:\400\482.10\MAPS\PLATS\CVR-PL09.dwg 7/8/2003 5:47:05 PM PST

RECORDING DATA ON SHEET 1

C. John Eardensohn 7-14-03
C. JOHN EARDENSOHN L.S. 5278 DATE
REGISTRATION EXPIRES 12-31-03

STREET DEDICATION - CARMEL VALLEY ROAD GENERAL UTILITY EASEMENT NORTH OF STATE ROUTE 56

DESCRIPTION	BY	APPROVED	DATE	FILMED	CITY OF SAN DIEGO, CALIFORNIA DEVELOPMENT SERVICES DEPARTMENT SHEET 9 OF 12 SHEETS	W.O. NO.
ORIGINAL	LAT33					
	R/J				<i>Lee Dennis</i> FOR CITY ENGINEER	1930-6271 CCS '83 COORDINATES
					9-16-03 DATE	290-1711 LAMBERT COORDINATES
AS BUILT						00031-9-C