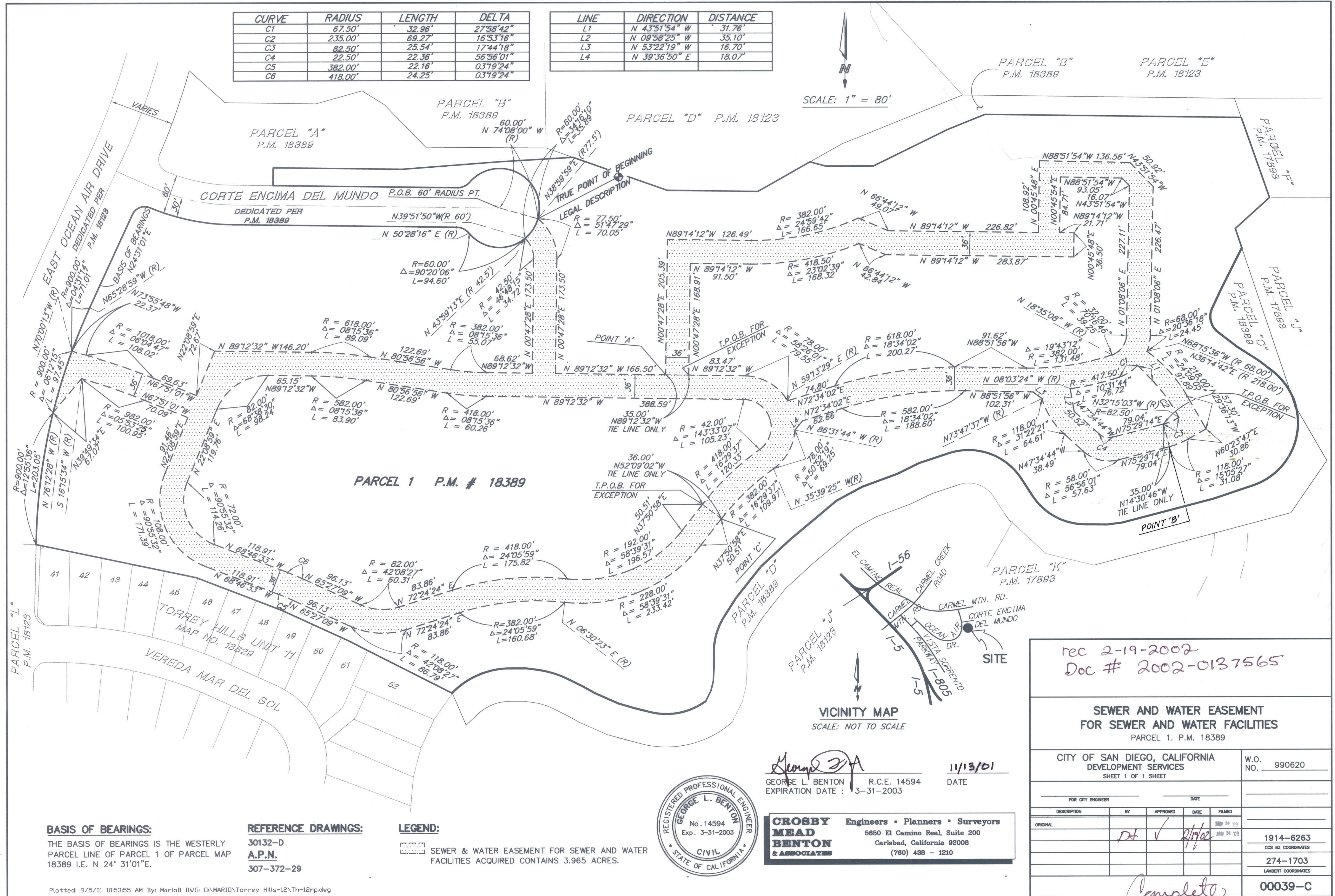


LINE	DIRECTION	DISTANCE
L1	N 43°51'54" W	31.76'
L2	N 09°58'25" W	35.10'
L3	N 53°22'19" W	16.70'
L4	N 39°36'50" E	18.07'



THE BASIS OF BEARINGS IS THE WESTERLY
PARCEL LINE OF PARCEL 1 OF PARCEL MAP
18389 I.E. N 24° 31'01"E.

30132-D
A.P.N.
307-372-29

SEWER & WATER EASEMENT FOR SEWER AND WATER FACILITIES ACQUIRED CONTAINS 3.965 ACRES.

GEORGE L. BENTON R.C.E. 14594
EXPIRATION DATE : 3-31-2003

DATE _____

**CROSBY
MEAD
BENTON
& ASSOCIATES**

Engineers • Planners • Surveyors
5650 El Camino Real, Suite 200
Carlsbad, California 92008
(760) 438 - 1210

SEWER AND WATER EASEMENT FOR SEWER AND WATER FACILITIES

PARCEL 1. P.M. 18389

CITY OF SAN DIEGO, CALIFORNIA
DEVELOPMENT SERVICES
SHEET 1 OF 1 SHEET

W.O. NO. 990620

FOR CITY ENGINEER		DATE		
DESCRIPTION	BY	APPROVED	DATE	FILMED
ORIGINAL	<i>Det</i>	<i>✓</i>	<i>2/19/02</i>	SEP 14 '75 JUN 14 '03

00039-C