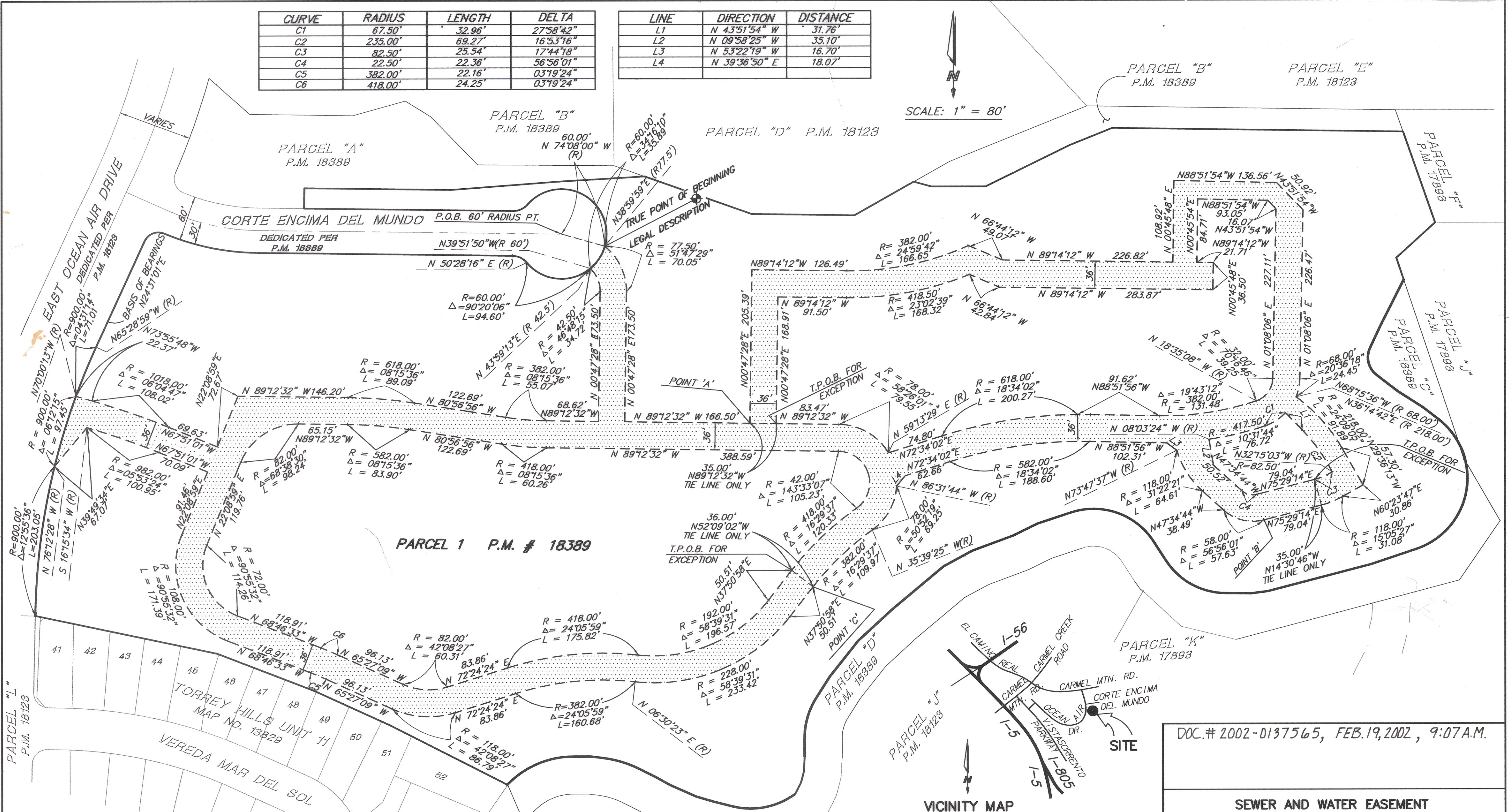


CURVE	RADIUS	LENGTH	DELTA
C1	67.50'	32.96'	27°58'42"
C2	235.00'	69.27'	16°53'16"
C3	82.50'	25.54'	17°44'18"
C4	22.50'	22.36'	56°56'01"
C5	382.00'	22.16'	03°19'24"
C6	418.00'	24.25'	03°19'24"

LINE	DIRECTION	DISTANCE
L1	N 43°51'54" W	31.76'
L2	N 09°58'25" W	35.10'
L3	N 53°22'19" W	16.70'
L4	N 39°36'50" E	18.07'



SCALE: 1" = 80'

VICINITY MAP  
SCALE: NOT TO SCALE

DOCUMENT NO. **F-9180**  
FILED **02-19-02**  
OFFICE OF THE CITY CLERK  
SAN DIEGO, CALIFORNIA



*George L. Benton*  
GEORGE L. BENTON R.C.E. 14594  
EXPIRATION DATE: 3-31-2003  
DATE **8/22/2001**  
**CROSBY MHAD BENTON & ASSOCIATES**  
Engineers - Planners - Surveyors  
5650 El Camino Real, Suite 200  
Carlsbad, California 92008  
(760) 438 - 1210

DOC.# 2002-0137565, FEB.19,2002, 9:07A.M.

SEWER AND WATER EASEMENT FOR SEWER AND WATER FACILITIES PARCEL 1. P.M. 18389			
CITY OF SAN DIEGO, CALIFORNIA DEVELOPMENT SERVICES SHEET 1 OF 1 SHEET			W.O. NO. 990620
<i>George L. Benton</i> FOR CITY ENGINEER			DATE <b>1/23/02</b>
DESCRIPTION	BY	APPROVED	DATE
ORIGINAL	<i>DL</i>		MAR 27 02
			MAR 27 02
			MAR 27 02
			MAR 27 02
			MAR 27 02
COMPLETE			1914-6263 CCS 83 COORDINATES
			274-1703 LAMBERT COORDINATES
			00039-C

**BASIS OF BEARINGS:**  
THE BASIS OF BEARINGS IS THE WESTERLY PARCEL LINE OF PARCEL 1 OF PARCEL MAP 18389 I.E. N 24° 31'01"E.

**REFERENCE DRAWINGS:**  
30132-D  
A.P.N.  
307-372-29

**LEGEND:**  
[Symbol] SEWER & WATER EASEMENT FOR SEWER AND WATER FACILITIES ACQUIRED CONTAINS 3.965 ACRES.