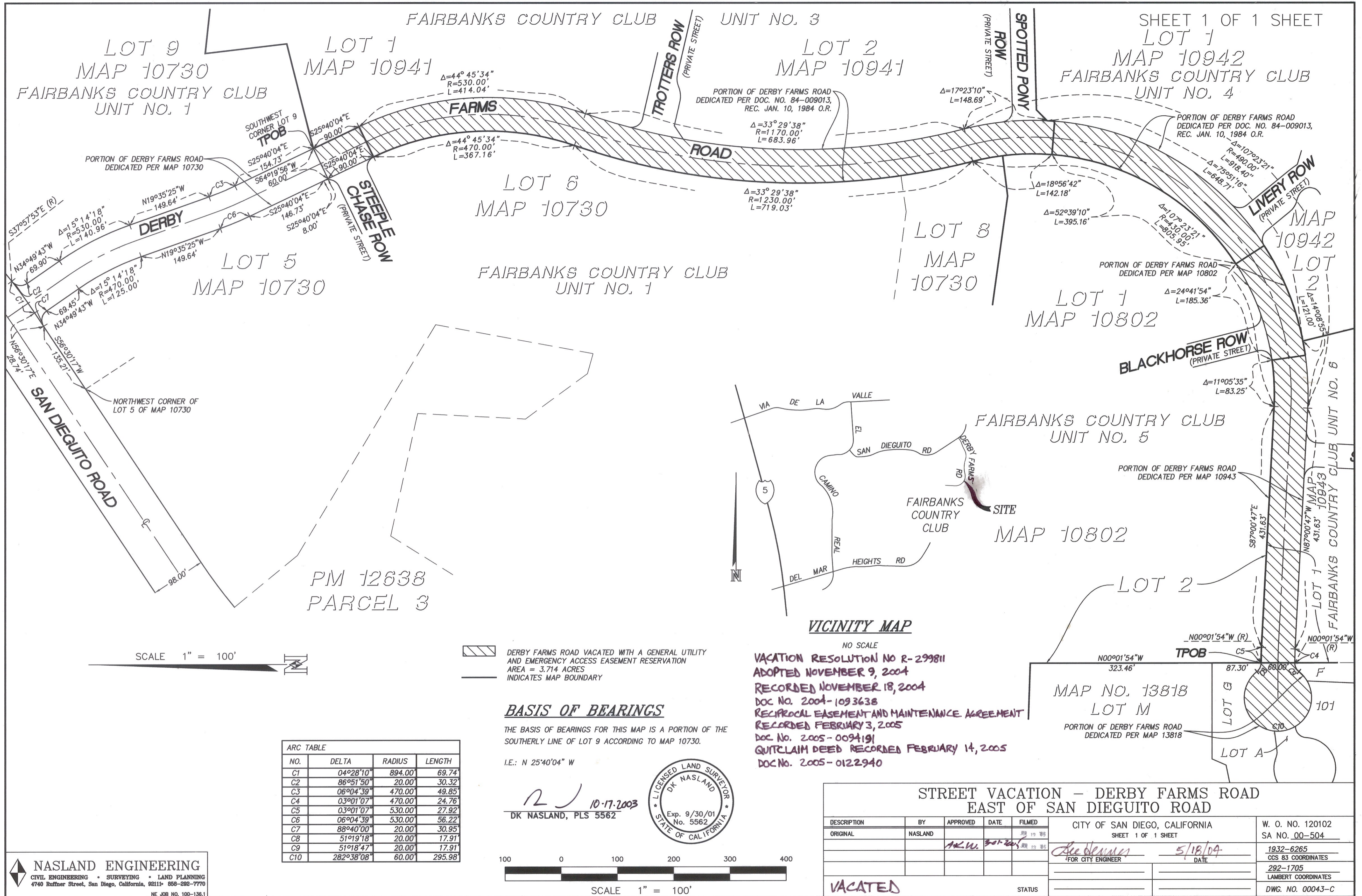


EXHIBIT "B"



SHEET 1 OF 1 SHEET
LOT 1
MAP 10942
FAIRBANKS COUNTRY CLUB
UNIT NO. 4

LOT 9
MAP 10730
FAIRBANKS COUNTRY CLUB
UNIT NO. 1

LOT 1
MAP 10941

LOT 2
MAP 10941

LOT 6
MAP 10730

LOT 8
MAP 10730

LOT 1
MAP 10802

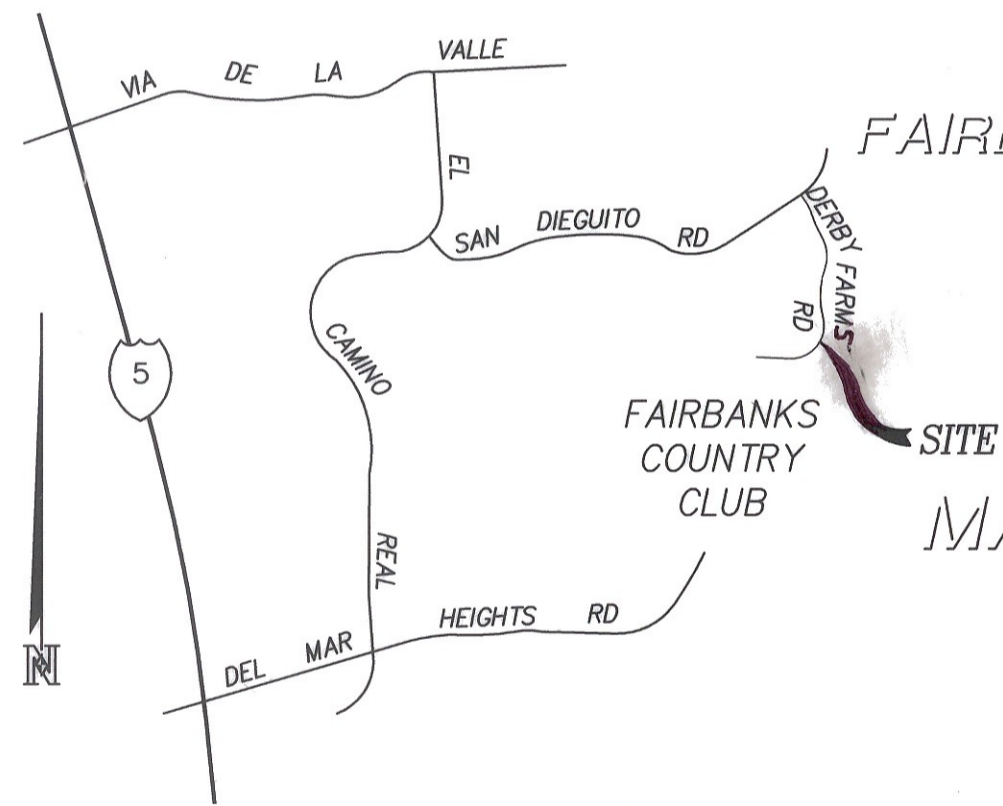
LOT 5
MAP 10730

FAIRBANKS COUNTRY CLUB
UNIT NO. 1

FAIRBANKS COUNTRY CLUB
UNIT NO. 5

MAP 10802

PM 12638
PARCEL 3



VICINITY MAP

SCALE 1" = 100'

DERBY FARMS ROAD VACATED WITH A GENERAL UTILITY AND EMERGENCY ACCESS EASEMENT RESERVATION AREA = 3.714 ACRES
 INDICATES MAP BOUNDARY

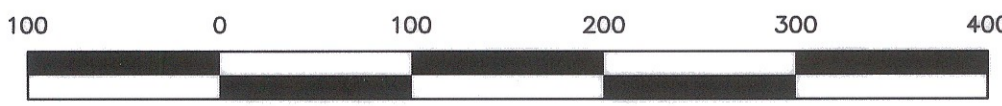
BASIS OF BEARINGS

THE BASIS OF BEARINGS FOR THIS MAP IS A PORTION OF THE SOUTHERLY LINE OF LOT 9 ACCORDING TO MAP 10730.

I.E.: N 25°40'04" W

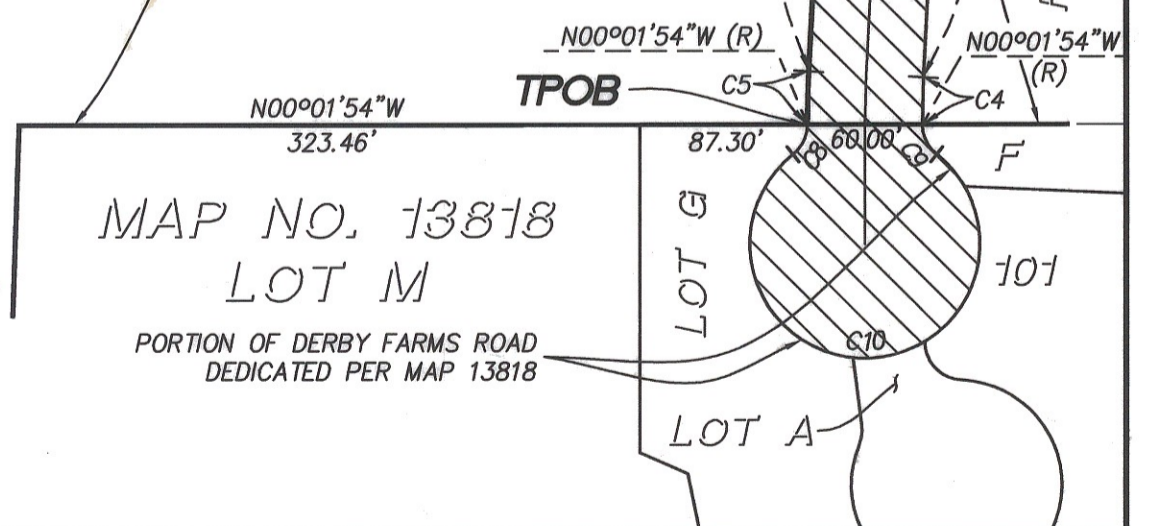
NO.	DELTA	RADIUS	LENGTH
C1	04°28'10"	894.00'	69.74'
C2	86°51'50"	20.00'	30.32'
C3	06°04'39"	470.00'	49.85'
C4	03°01'07"	470.00'	24.76'
C5	03°01'07"	530.00'	27.92'
C6	06°04'39"	530.00'	56.22'
C7	88°40'00"	20.00'	30.95'
C8	51°19'18"	20.00'	17.91'
C9	51°18'47"	20.00'	17.91'
C10	282°38'08"	60.00'	295.98'

DK Masland
10-17-2003
DK NASLAND, PLS 5562



SCALE 1" = 100'

NO SCALE
VACATION RESOLUTION NO R-299811
ADOPTED NOVEMBER 9, 2004
RECORDED NOVEMBER 18, 2004
DOC NO. 2004-1093638
RECIPROCAL EASEMENT AND MAINTENANCE AGREEMENT
RECORDED FEBRUARY 3, 2005
DOC NO. 2005-0094191
QUITCLAIM DEED RECORDED FEBRUARY 14, 2005
DOC NO. 2005-0122940



**STREET VACATION - DERBY FARMS ROAD
EAST OF SAN DIEGUITO ROAD**

DESCRIPTION	BY	APPROVED	DATE	FILMED	CITY OF SAN DIEGO, CALIFORNIA SHEET 1 OF 1 SHEET	W. O. NO. 120102 SA NO. 00-504
ORIGINAL	NASLAND	<i>DK Masland</i>	10/18/03	10/19/03	FOR CITY ENGINEER	1932-6265 CCS 83 COORDINATES
			5/18/04		DATE	292-1705 LAMBERT COORDINATES
VACATED						DWG. NO. 00043-C