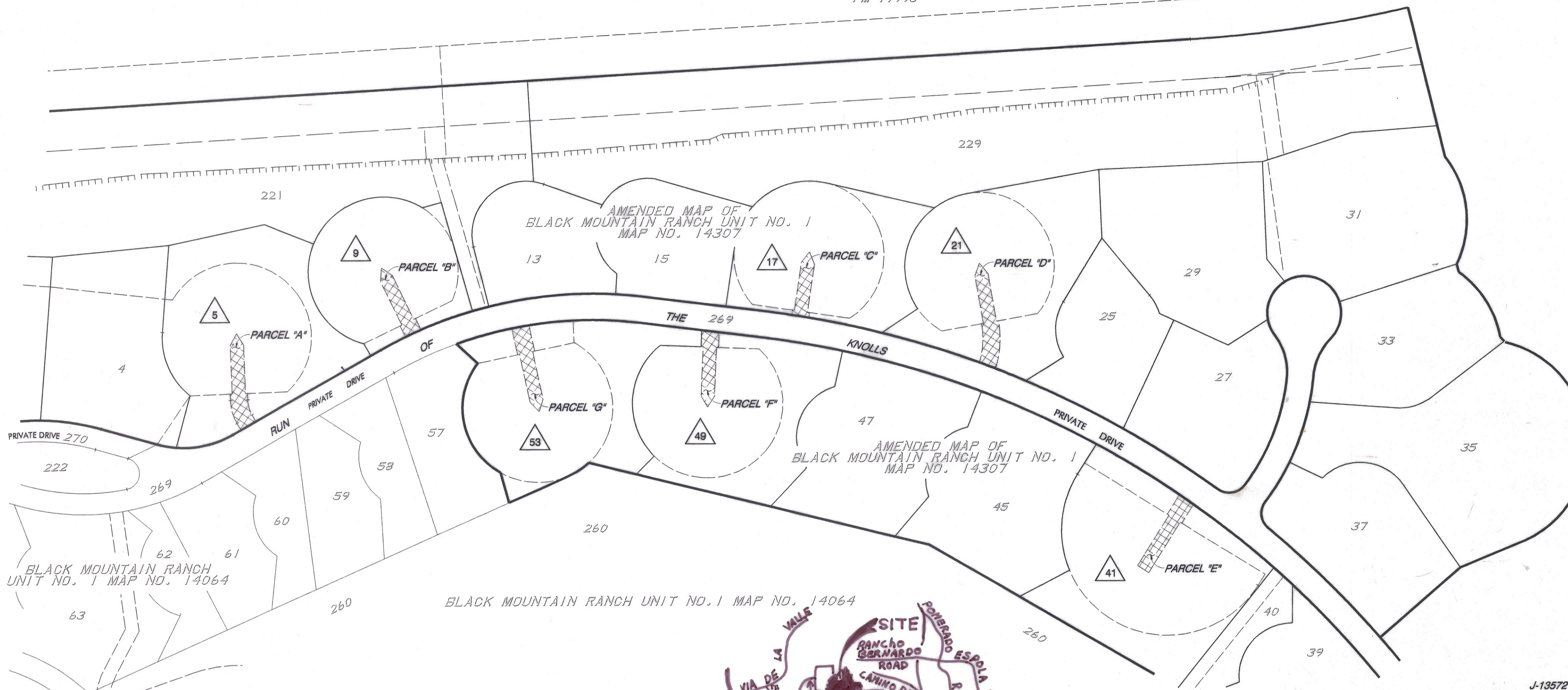


PARCEL 7  
PM 17996


PARCEL 6  
PM 17995



BLACK MOUNTAIN RANCH  
UNIT NO. 1 MAP NO. 14064

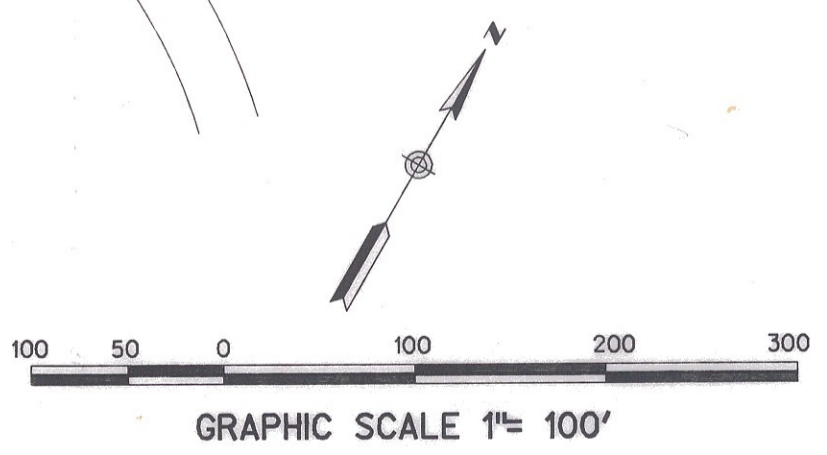
BLACK MOUNTAIN RANCH UNIT NO. 1 MAP NO. 14064

J-13572

**LEGEND**  
 INDICATES GENERAL UTILITY AND ACCESS EASEMENTS PER MAP NO. 14064, VACATED.  
 PARCEL "A" - 0.069 ACRES  
 PARCEL "B" - 0.049 ACRES  
 PARCEL "C" - 0.042 ACRES  
 PARCEL "D" - 0.077 ACRES  
 PARCEL "E" - 0.062 ACRES  
 PARCEL "F" - 0.052 ACRES  
 PARCEL "G" - 0.062 ACRES



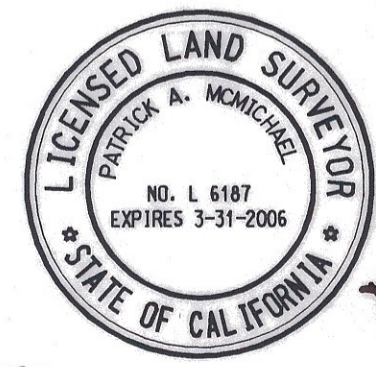
RESOLUTION 30051  
 ADOPTED JUN 20, 2005  
 RECORDED AS Doc No  
 2005-0552778  
 JUN 30, 2005



**REFERENCE DRAWINGS**  
 MAP NO. 14064, MAP NO. 14307;  
 DWG. NO. 30287-6-D THRU -9-D, -38-D THRU -40-D, -50-D;  
 DWG. NO. 30150-7-D THRU -9-D

SURVEYOR OF WORK

*Patrick A. McMichael* 4-5-04  
 PATRICK A. MCMICHAEL, LS 6187 DATE



GENERAL UTILITY AND ACCESS EASEMENTS ABANDONED IN LOTS 5, 9, 17, 21, 41, 49, & 53 OF AMENDED MAP OF BLACK MOUNTAIN RANCH UNIT 1 MAP NO. 14307				W.O. NO. 990905
CITY OF SAN DIEGO, CALIFORNIA DEVELOPMENT SERVICES DEPT. SHEET 1 OF 7 SHEET				A01-659
FOR CITY ENGINEER		DATE 18 MAR '08		
DESCRIPTION	BY	APPROVED	DATE	FILMED
ORIGINAL				
<b>FINALIZED</b>	✓	JM	3/18/08	
				1940-6283 CCS 83 COORDINATES
				300-1723 LAMBERT COORDINATES
<b>COMPLETED</b>				00056-C

J. 13041C  
**RICK ENGINEERING COMPANY**  
 San Diego Riverside Orange Phoenix Tucson  
 5820 Friars Road • San Diego, CA 92110-2596 • (619) 291-0707 • FAX (619) 291-4185 • www.rickeng.com  
 © 2000 Rick Engineering Company