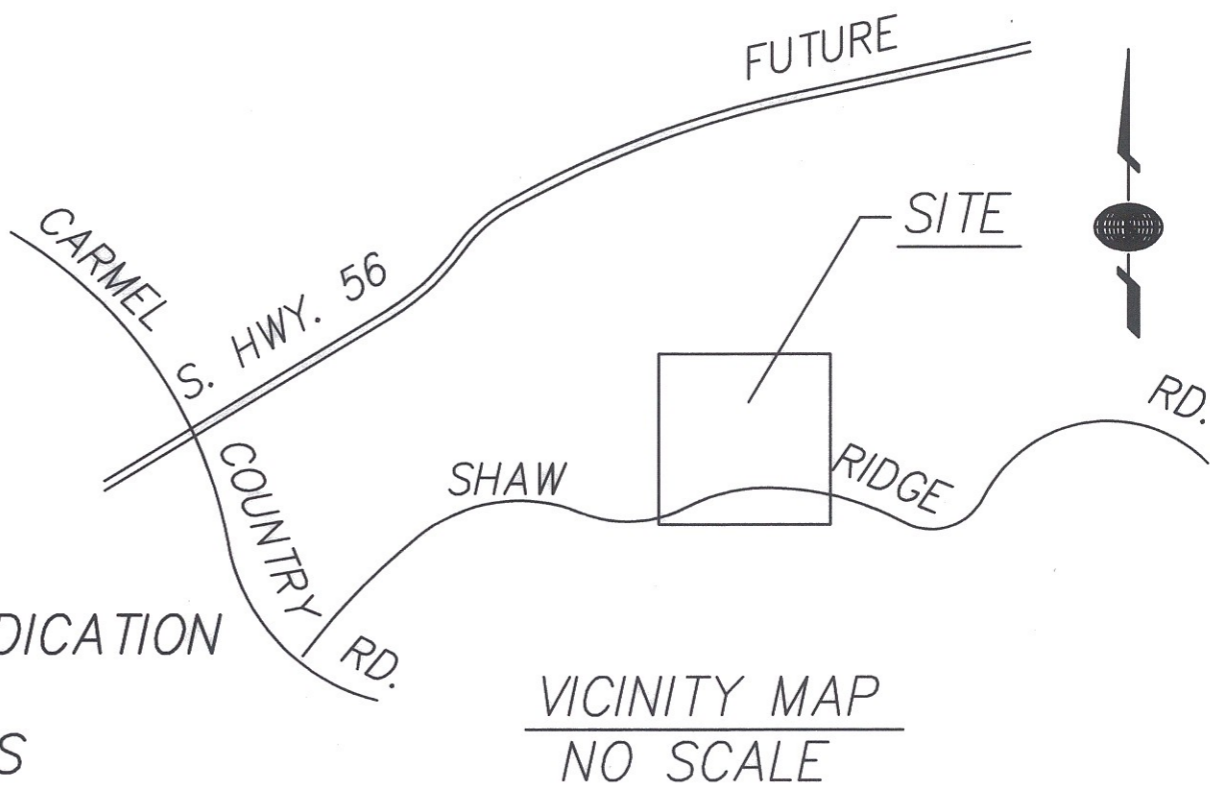


EXHIBIT 'B'

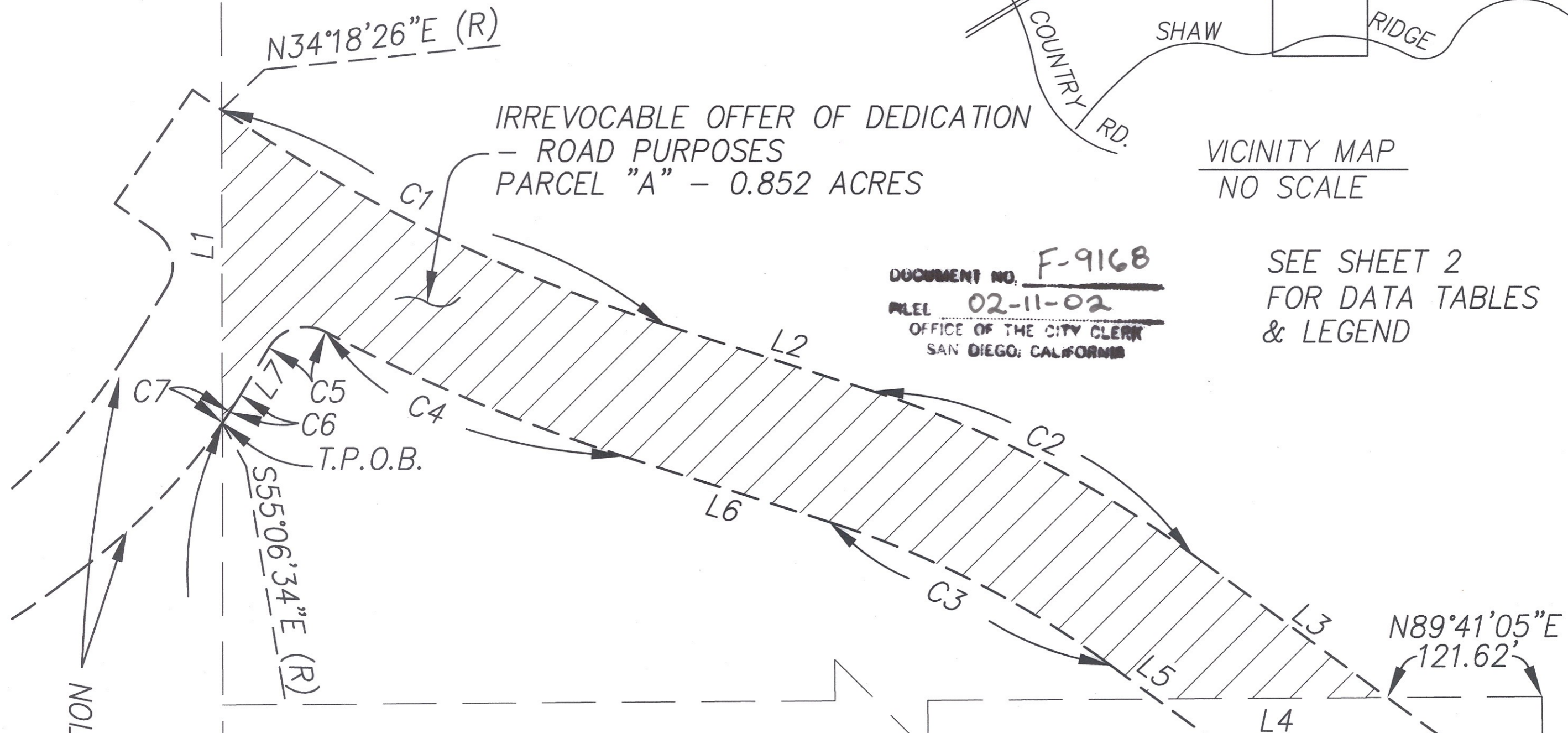
N1/2, SW1/4, SW1/4, NW1/4,
SEC. 22, T.14S., R.3W., S.B.M.



IRREVOCABLE OFFER OF DEDICATION
- ROAD PURPOSES
PARCEL "A" - 0.852 ACRES

DOCUMENT NO. F-9168
FILED 02-11-02
OFFICE OF THE CITY CLERK
SAN DIEGO, CALIFORNIA

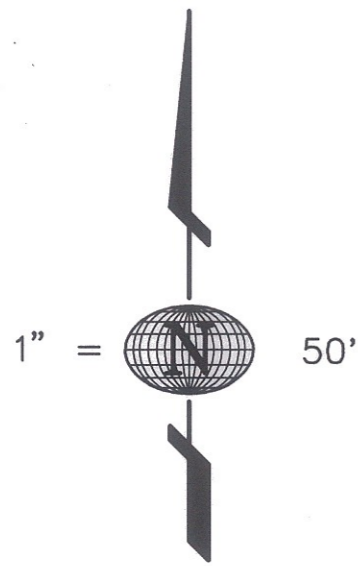
SEE SHEET 2
FOR DATA TABLES
& LEGEND



IRREVOCABLE OFFER OF DEDICATION
SEE DWG. NO 00060-C

N00°08'35"W 467.62'

IRREVOCABLE OFFER OF DEDICATION
SEE DWG. NO 00061-C



S1/2, SW1/4, SW1/4, NW1/4,
SEC. 22, T.14S., R.3W., S.B.M.

FOUND 2" DIA. IRON PIPE WITH
GALVANIZED CAP (NO RECORD)
AS SHOWN ON MAP NO. 13684.

W 1/4 COR.
SEC. 22
P.O.C.

SEC 21
SEC 22

LATITUDE 33, 4933 PARAMOUNT DRIVE, 2ND FLOOR
SAN DIEGO, CA 92123

C. John Eardensohn 1/15/02
C. JOHN EARDENSOHN, L.S. 5278 DATE
(MY LICENSE EXPIRES 12-31-03)



Rec. 2-13-2002
Doc. # 2002-0127032

IRREVOCABLE OFFER OF DEDICATION - ROAD PURPOSES
IN THE N 1/2, OF THE SW1/4, OF THE SW 1/4, OF THE NW 1/4, OF SEC. 22 T.14S., R.3W., S.B.M.

DESCRIPTION	BY	APPROVED	DATE	FILMED
ORIGINAL	<i>DE</i>	<i>[Signature]</i>	<i>2/13/02</i>	MAR 27 02
				MAR 27 02
				MAR 27 02
				MAR 27 02
				MAR 27 02

CITY OF SAN DIEGO, CALIFORNIA
DEVELOPMENT REVIEW DEPARTMENT
SHEET 1 OF 2 SHEETS

[Signature]
FOR CITY ENGINEER

1-18-02
DATE

W.O. NO. 980092

1922-6273

CCS 83 COORDINATES

282-1713

LAMBERT COORDINATES

00059-1-C

Complete

STATUS