

EXHIBIT 'B'

N1/2, NE1/4, SEC. 21

DOCUMENT NO. F-9166
 FILED 02-11-02
 OFFICE OF THE CITY CLERK
 SAN DIEGO, CALIFORNIA

N88°08'36"W 653.93'

E1/2, SE1/4, NE1/4,
 SEC. 21, T.14S., R.3W.,
 S.B.M.

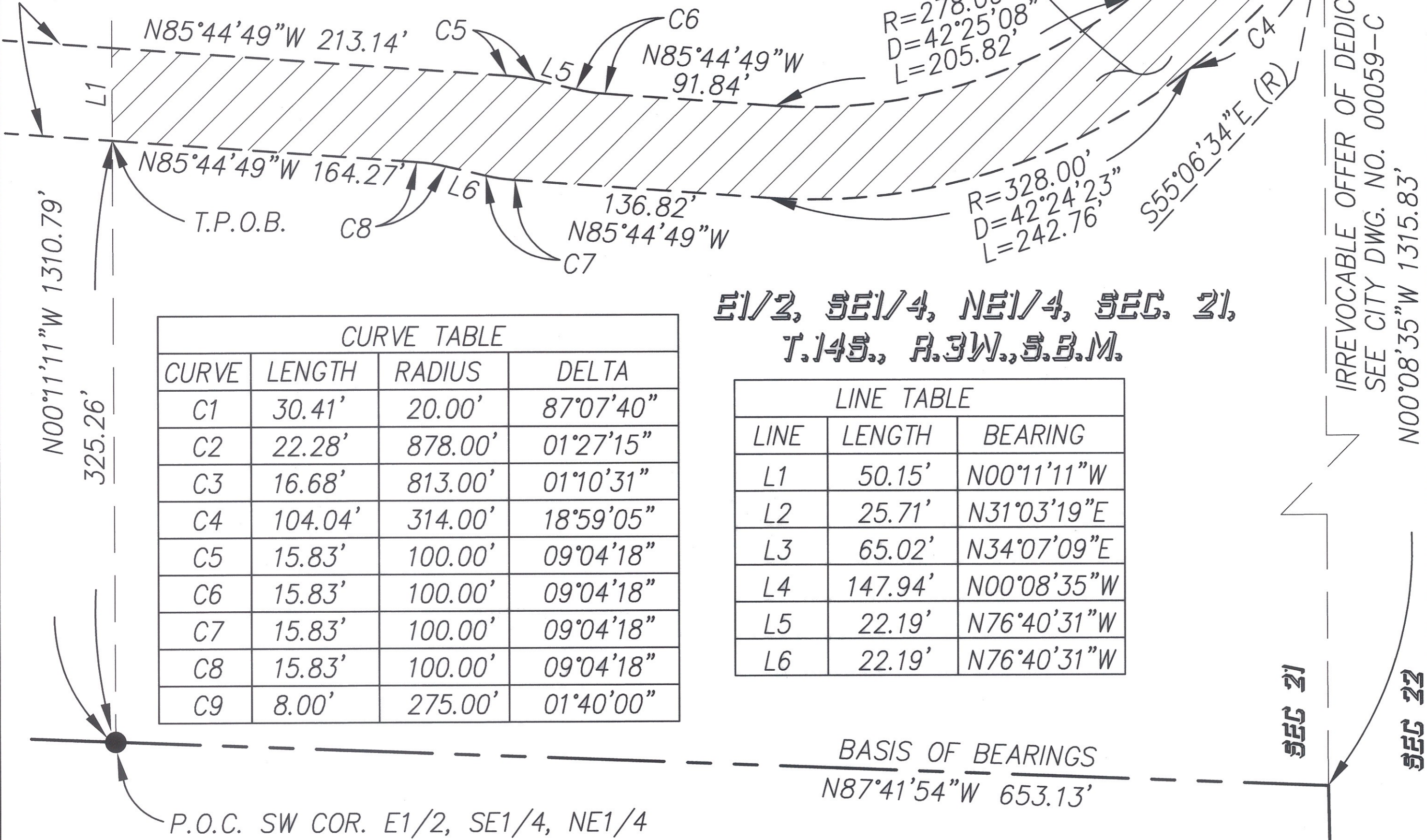
IRREVOCABLE OFFER OF DEDICATION
 SEE CITY DWG. NO. 00009-C

W1/2, SE1/4, NE1/4



SCALE: 1" = 50'

IRREVOCABLE OFFER OF DEDICATION
 - ROAD PURPOSES
 PARCEL "A"=0.899 ACRES



E1/2, SE1/4, NE1/4, SEC. 21,
 T.14S., R.3W., S.B.M.

CURVE TABLE			
CURVE	LENGTH	RADIUS	DELTA
C1	30.41'	20.00'	87°07'40"
C2	22.28'	878.00'	01°27'15"
C3	16.68'	813.00'	01°10'31"
C4	104.04'	314.00'	18°59'05"
C5	15.83'	100.00'	09°04'18"
C6	15.83'	100.00'	09°04'18"
C7	15.83'	100.00'	09°04'18"
C8	15.83'	100.00'	09°04'18"
C9	8.00'	275.00'	01°40'00"

LINE TABLE		
LINE	LENGTH	BEARING
L1	50.15'	N00°11'11"W
L2	25.71'	N31°03'19"E
L3	65.02'	N34°07'09"E
L4	147.94'	N00°08'35"W
L5	22.19'	N76°40'31"W
L6	22.19'	N76°40'31"W

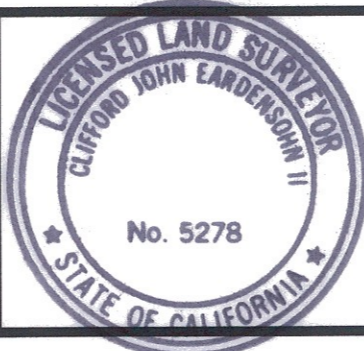
BASIS OF BEARINGS
 N87°41'54"W 653.13'

P.O.C. SW COR. E1/2, SE1/4, NE1/4

LOT 140 MAP NO. 13584

LATITUDE 33, 4933 PARAMOUNT DRIVE, 2ND FLOOR
 SAN DIEGO, CA 92123

C. John Eardensohn 1/15/02
 C. JOHN EARDENSOHN, L.S. 5278 DATE
 (MY LICENSE EXPIRES 12-31-03)



REC. 2-13-02
 Doc. NO. 2002-0127121

IRREVOCABLE OFFER OF DEDICATION - FOR ROAD PURPOSES
 IN THE E 1/2, SE 1/4, NE 1/4, OF SEC. 21, T. 14 S., R. 3 W., S.B.M.

DESCRIPTION	BY	APPROVED	DATE	FILMED
ORIGINAL	DI	✓	2/13/02	MAR 07 02
				MAR 07 02
				MAR 07 02
				MAR 07 02
				MAR 07 02

CITY OF SAN DIEGO, CALIFORNIA
 DEVELOPMENT REVIEW DEPARTMENT
 SHEET 1 OF 2 SHEETS

Dec. Hennes 1-18-02
 FOR CITY ENGINEER DATE

W.O. NO. 980092

1924-6271

CCS 83 COORDINATES
 284-1711

LAMBERT COORDINATES

00060-1-C

Complete STATUS