

LEGEND

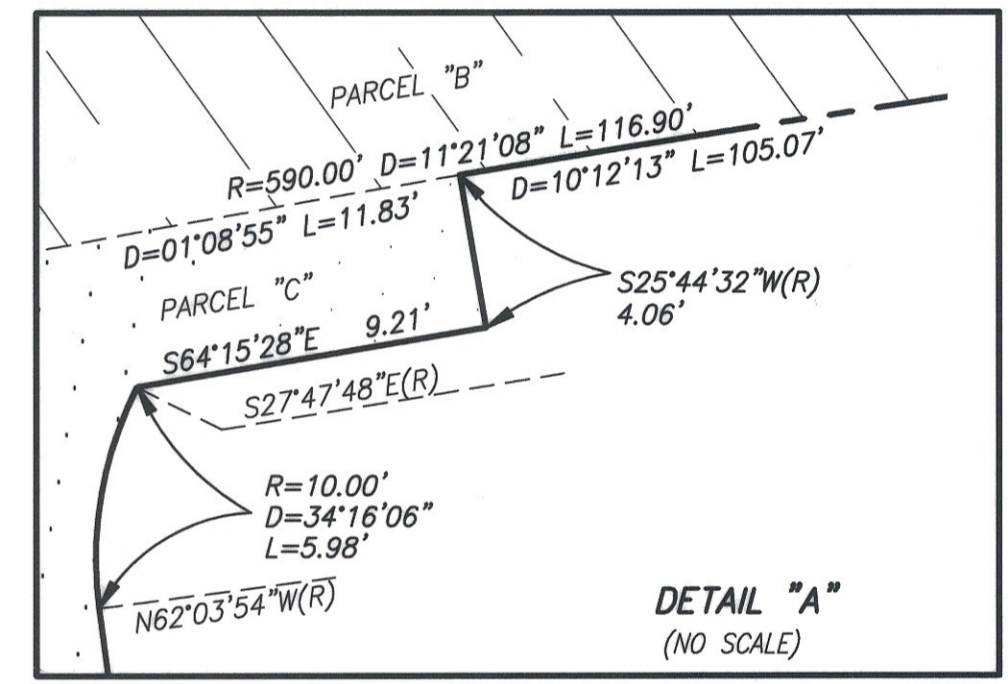
- INDICATES PROPERTY BOUNDARY
- (R) INDICATES RADIAL BEARING
- () INDICATES RECORD DATA PER MAP 5347
- P.O.B. INDICATES POINT OF BEGINNING
- T.P.O.B. INDICATES TRUE POINT OF BEGINNING

PARCEL "A" - INDICATES POR. OF ROSECRANS STREET DEDICATED: 0.028 AC.
 PARCEL "B" - INDICATES POR. OF MIDWAY DRIVE DEDICATED: 0.051 AC.
 PARCEL "C" - INDICATES POR. OF GAINES STREET DEDICATED: 0.025 AC.

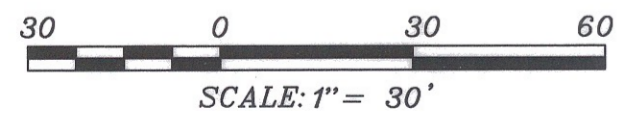
BASIS OF BEARINGS
 THE BASIS OF BEARINGS FOR THIS SURVEY IS THE NORTHWESTERLY LINE OF WEERTS TRACT, LOT 1 OF MAP 5347, I.E. N36°10'30"E.

ASSESSOR'S PARCEL NUMBER
 450-802-17

REFERENCE DRAWINGS
 GAINES STREET: DWG. NO. 31368-2-D.
 MIDWAY DRIVE: DWG. NO. 31368-3-D.
 ROSECRANS STREET: DWG. NO. 31368-4-D.



SUPERIOR COURT CASE NO. 51015
WESTLAWN MAP NO. 1464



ENGINEER OF WORK
 LEPPERT ENGINEERING CORPORATION
 5190 GOVERNOR DRIVE, SUITE 205
 SAN DIEGO, CA 92122-2848



Norman S. Kasubuchi
 NORMAN S. KASUBUCHI
 RCE 31829
 EX. DATE 12-31-04

DATE 12-05-02

RECORDING INFO:
 DOC. #2002-1199417, 12-30-02, 1:38 P.M.

STREET DEDICATION: Portions of Gaines Street, Midway Drive, and Rosecrans Street

CITY OF SAN DIEGO, CALIFORNIA DEVELOPMENT SERVICES DEPARTMENT SHEET 1 OF 1 SHEETS				W.O. NO. 410654
<i>Leppert</i> FOR CITY ENGINEER		DATE 12/24/02		
DESCRIPTION	BY	APPROVED	DATE	FILMED
ORIGINAL	LEC			1852-6265 CCS 83 COORDINATES
	R/H			212-1705 LAMBERT COORDINATES
COMPLETE				00068-C

Leppert Engineering CORPORATION
 5190 Governor Drive, Suite 205, San Diego, Ca. 92122-2848
 Phone: (658) 597-2001 Fax: (658) 597-2009