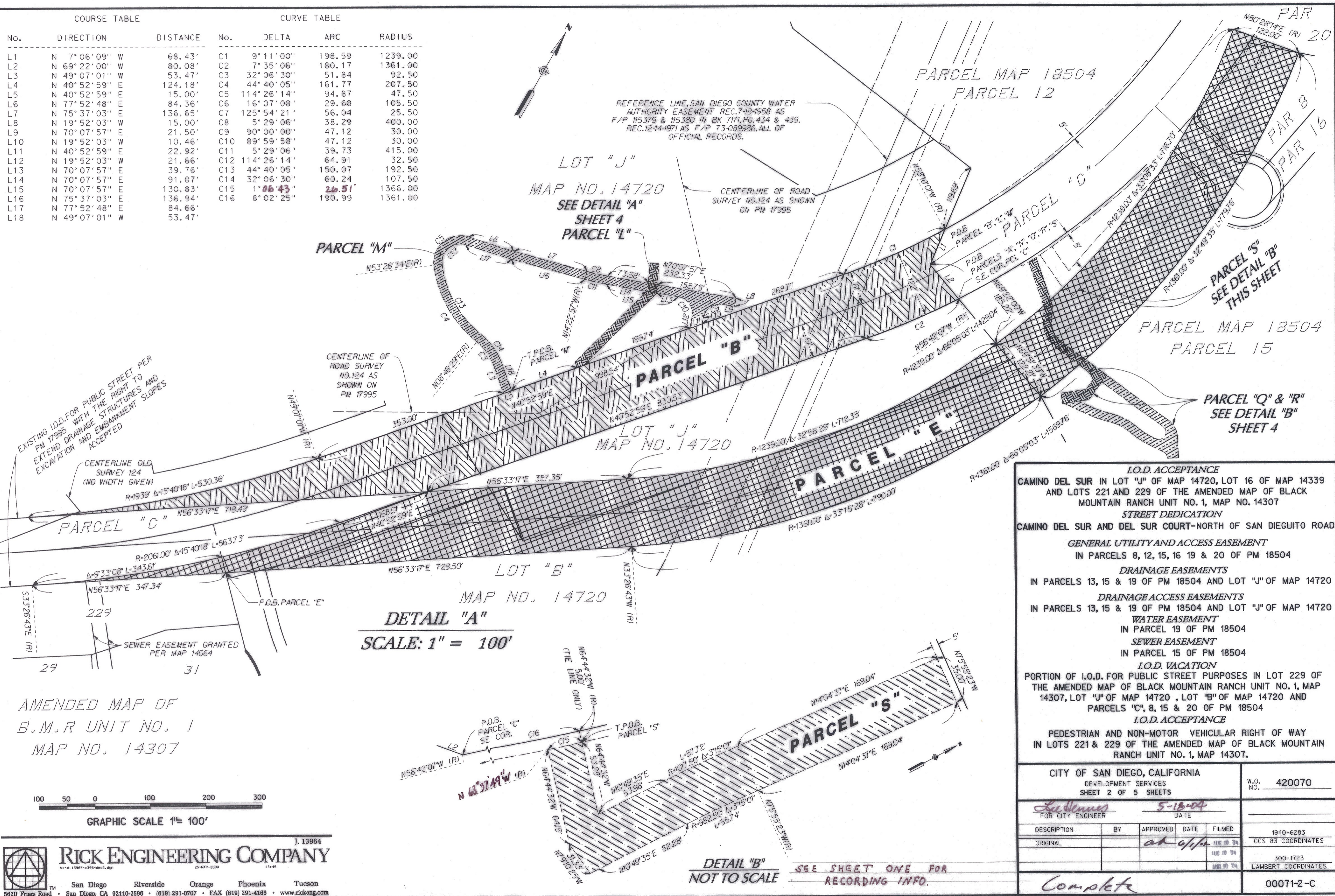
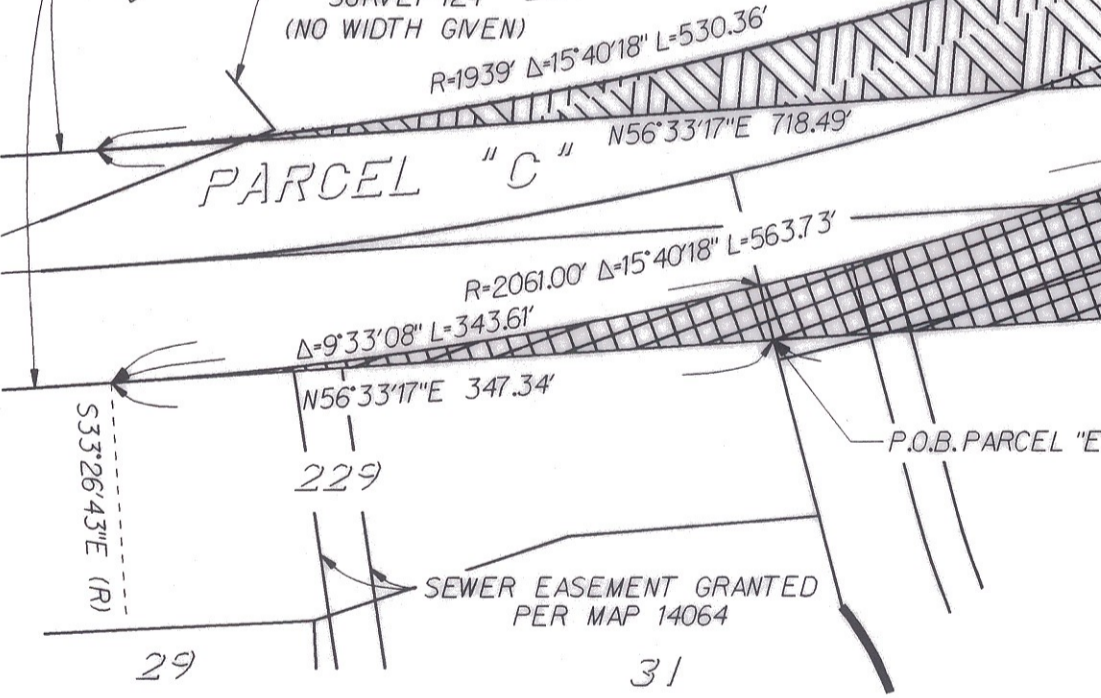


COURSE TABLE			CURVE TABLE			
No.	DIRECTION	DISTANCE	No.	DELTA	ARC	RADIUS
L1	N 7° 06' 09" W	68.43'	C1	9° 11' 00"	198.59	1239.00
L2	N 69° 22' 00" W	80.08'	C2	7° 35' 06"	180.17	1361.00
L3	N 49° 07' 01" W	53.47'	C3	32° 06' 30"	51.84	92.50
L4	N 40° 52' 59" E	124.18'	C4	44° 40' 05"	161.77	207.50
L5	N 40° 52' 59" E	15.00'	C5	114° 26' 14"	94.87	47.50
L6	N 77° 52' 48" E	84.36'	C6	16° 07' 08"	29.68	105.50
L7	N 75° 37' 03" E	136.65'	C7	125° 54' 21"	56.04	25.50
L8	N 19° 52' 03" W	15.00'	C8	5° 29' 06"	38.29	400.00
L9	N 70° 07' 57" E	21.50'	C9	90° 00' 00"	47.12	30.00
L10	N 19° 52' 03" W	10.46'	C10	89° 59' 58"	47.12	30.00
L11	N 40° 52' 59" E	22.92'	C11	5° 29' 06"	39.73	415.00
L12	N 19° 52' 03" W	21.66'	C12	114° 26' 14"	64.91	32.50
L13	N 70° 07' 57" E	39.76'	C13	44° 40' 05"	150.07	192.50
L14	N 70° 07' 57" E	91.07'	C14	32° 06' 30"	60.24	107.50
L15	N 70° 07' 57" E	130.83'	C15	1° 06' 43"	26.51	1366.00
L16	N 75° 37' 03" E	136.94'	C16	8° 02' 25"	190.99	1361.00
L17	N 77° 52' 48" E	84.66'				
L18	N 49° 07' 01" W	53.47'				

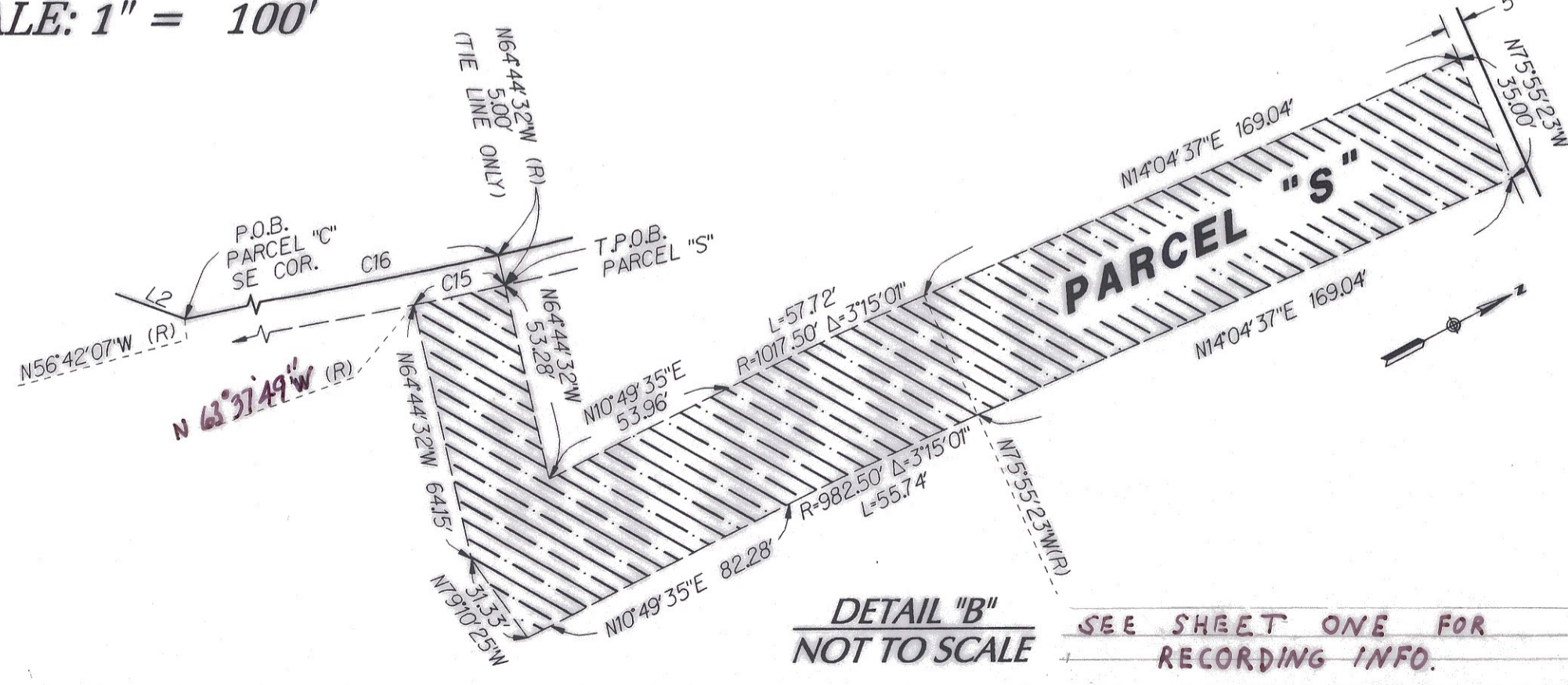
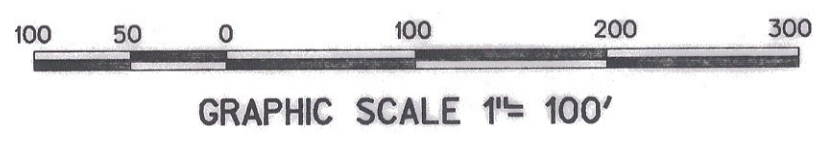


EXISTING I.O.D. FOR PUBLIC STREET PER PM 17995 WITH THE RIGHT TO EXTEND DRAINAGE STRUCTURES AND EXCAVATION AND EMBANKMENT SLOPES ACCEPTED



DETAIL "A"
SCALE: 1" = 100'

AMENDED MAP OF
B.M.R UNIT NO. 1
MAP NO. 14307



DETAIL "B"
NOT TO SCALE
SEE SHEET ONE FOR RECORDING INFO.

I.O.D. ACCEPTANCE
CAMINO DEL SUR IN LOT "J" OF MAP 14720, LOT 16 OF MAP 14339 AND LOTS 221 AND 229 OF THE AMENDED MAP OF BLACK MOUNTAIN RANCH UNIT NO. 1, MAP NO. 14307

STREET DEDICATION
CAMINO DEL SUR AND DEL SUR COURT-NORTH OF SAN DIEGUITO ROAD

GENERAL UTILITY AND ACCESS EASEMENT
IN PARCELS 8, 12, 15, 16 19 & 20 OF PM 18504

DRAINAGE EASEMENTS
IN PARCELS 13, 15 & 19 OF PM 18504 AND LOT "J" OF MAP 14720

DRAINAGE ACCESS EASEMENTS
IN PARCELS 13, 15 & 19 OF PM 18504 AND LOT "J" OF MAP 14720

WATER EASEMENT
IN PARCEL 19 OF PM 18504

SEWER EASEMENT
IN PARCEL 15 OF PM 18504

I.O.D. VACATION
PORTION OF I.O.D. FOR PUBLIC STREET PURPOSES IN LOT 229 OF THE AMENDED MAP OF BLACK MOUNTAIN RANCH UNIT NO. 1, MAP 14307, LOT "J" OF MAP 14720, LOT "B" OF MAP 14720 AND PARCELS "C", 8, 15 & 20 OF PM 18504

I.O.D. ACCEPTANCE
PEDESTRIAN AND NON-MOTOR VEHICULAR RIGHT OF WAY IN LOTS 221 & 229 OF THE AMENDED MAP OF BLACK MOUNTAIN RANCH UNIT NO. 1, MAP 14307.

CITY OF SAN DIEGO, CALIFORNIA DEVELOPMENT SERVICES SHEET 2 OF 5 SHEETS		W.O. NO. 420070
FOR CITY ENGINEER	DATE 5-18-04	
DESCRIPTION	BY	APPROVED DATE FILMED
ORIGINAL		ak 6/1/04 11/10/04
		11/10/04 11/10/04
		11/10/04 11/10/04
Complete		1940-6283 CCS 83 COORDINATES 300-1723 LAMBERT COORDINATES 00071-2-C