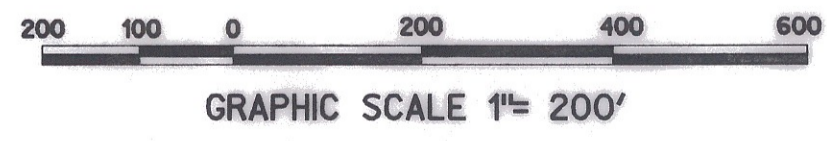
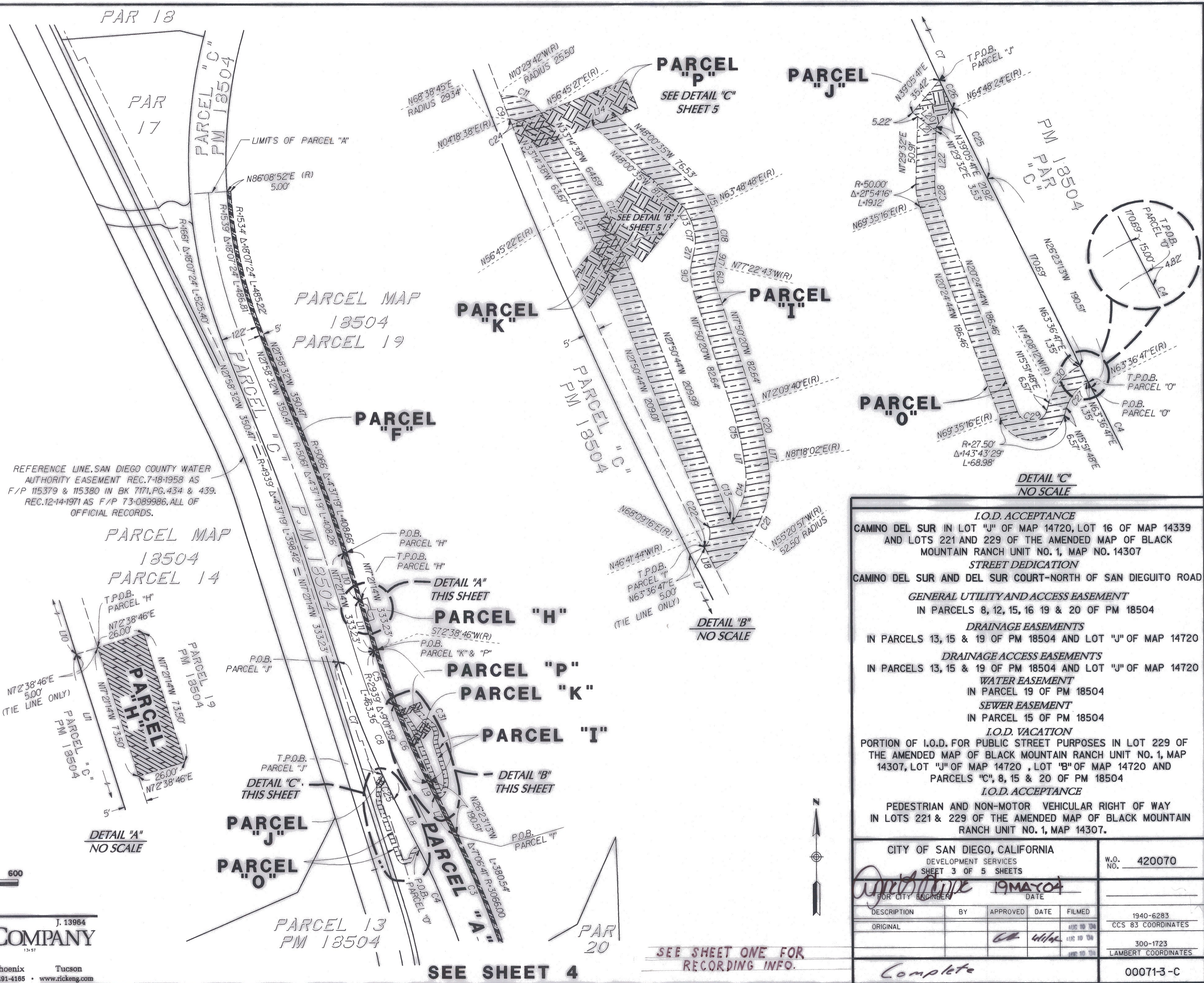


COURSE TABLE

No.	DIRECTION	DISTANCE
L1	N 33° 14' 36" W	2.15'
L2	N 33° 14' 35" W	44.63'
L3	N 85° 14' 06" W	14.70'
L4	N 24° 39' 44" W	26.08'
L5	N 65° 20' 16" W	12.87'
L6	N 04° 00' 30" W	11.80'
L7	N 26° 23' 13" W	139.98'
L8	N 26° 23' 13" W	190.51'
L9	N 26° 23' 13" W	50.53'
L10	N 17° 21' 14" W	161.65'
L11	N 17° 21' 14" W	171.58'
L12	N 12° 37' 17" E	6.41'
L13	N 26° 11' 12" W	7.23'
L14	N 68° 32' 22" E	16.77'
L15	N 26° 11' 10" W	10.12'
L16	N 12° 37' 12" E	6.41'
L17	N 8° 41' 58" W	8.95'
L18	N 26° 23' 13" W	16.10'
L19	N 21° 13' 46" W	15.54'
L20	N 50° 54' 19" W	24.15'
L21	N 50° 54' 19" W	18.93'
L22	N 01° 29' 32" E	39.36'

CURVE TABLE

No.	DELTA	ARC	RADIUS
C1	78° 32' 46"	34.96	25.50
C2	2° 22' 37"	4.46	107.50
C3	7° 06' 41"	379.92	3061.00
C4	7° 06' 41"	364.77	2939.00
C5	3° 40' 06"	188.17	2939.00
C6	5° 21' 53"	275.18	2939.00
C7	7° 22' 54"	394.36	3061.00
C8	9° 01' 59"	482.59	3061.00
C9	0° 19' 25"	16.58	2934.00
C10	0° 32' 28"	28.91	3061.00
C11	67° 15' 08"	29.93	25.50
C12	11° 23' 54"	21.29	107.00
C13	5° 52' 38"	2.77	27.00
C14	43° 21' 01"	39.72	52.50
C15	9° 08' 22"	27.52	172.50
C16	30° 27' 37"	19.94	37.50
C17	38° 48' 29"	22.01	32.50
C18	38° 48' 29"	32.17	47.50
C19	30° 27' 37"	11.96	22.50
C20	9° 08' 22"	29.91	187.50
C21	69° 40' 18"	82.08	67.50
C22	65° 09' 00"	13.65	12.00
C23	11° 23' 54"	18.30	92.00
C24	52° 26' 44"	9.61	10.50
C25	1° 11' 37"	63.77	3061.00
C26	0° 27' 29"	24.47	3061.00
C27	47° 44' 59"	27.09	32.50
C28	21° 54' 16"	13.38	35.00
C29	143° 43' 29"	31.36	12.50
C30	47° 44' 59"	39.59	47.50
C31	09° 01' 59"	462.57	2934.00



**RICK ENGINEERING COMPANY**  
 J. 13964  
 San Diego    Riverside    Orange    Phoenix    Tucson  
 5620 Friars Road • San Diego, CA 92110-2596 • (619) 291-0707 • FAX (619) 291-4165 • www.rickeng.com

**I.O.D. ACCEPTANCE**  
 CAMINO DEL SUR IN LOT "J" OF MAP 14720, LOT 16 OF MAP 14339 AND LOTS 221 AND 229 OF THE AMENDED MAP OF BLACK MOUNTAIN RANCH UNIT NO. 1, MAP NO. 14307

**STREET DEDICATION**  
 CAMINO DEL SUR AND DEL SUR COURT-NORTH OF SAN DIEGUITO ROAD

**GENERAL UTILITY AND ACCESS EASEMENT**  
 IN PARCELS 8, 12, 15, 16 19 & 20 OF PM 18504

**DRAINAGE EASEMENTS**  
 IN PARCELS 13, 15 & 19 OF PM 18504 AND LOT "J" OF MAP 14720

**DRAINAGE ACCESS EASEMENTS**  
 IN PARCELS 13, 15 & 19 OF PM 18504 AND LOT "J" OF MAP 14720

**WATER EASEMENT**  
 IN PARCEL 19 OF PM 18504

**SEWER EASEMENT**  
 IN PARCEL 15 OF PM 18504

**I.O.D. VACATION**  
 PORTION OF I.O.D. FOR PUBLIC STREET PURPOSES IN LOT 229 OF THE AMENDED MAP OF BLACK MOUNTAIN RANCH UNIT NO. 1, MAP 14307, LOT "J" OF MAP 14720, LOT "B" OF MAP 14720 AND PARCELS "C", 8, 15 & 20 OF PM 18504

**I.O.D. ACCEPTANCE**  
 PEDESTRIAN AND NON-MOTOR VEHICULAR RIGHT OF WAY IN LOTS 221 & 229 OF THE AMENDED MAP OF BLACK MOUNTAIN RANCH UNIT NO. 1, MAP 14307.

CITY OF SAN DIEGO, CALIFORNIA		DEVELOPMENT SERVICES		SHEET 3 OF 5 SHEETS		W.O. NO. 420070	
FOR CITY ENGINEER		DATE		19 MAY 04			
DESCRIPTION	BY	APPROVED	DATE	FILMED			
ORIGINAL				4/15/04	1940-6283		
				4/15/04	CCS 83 COORDINATES		
				4/15/04	300-1723		
					LAMBERT COORDINATES		
Complete						000713-C	

SEE SHEET ONE FOR RECORDING INFO.

SEE SHEET 4