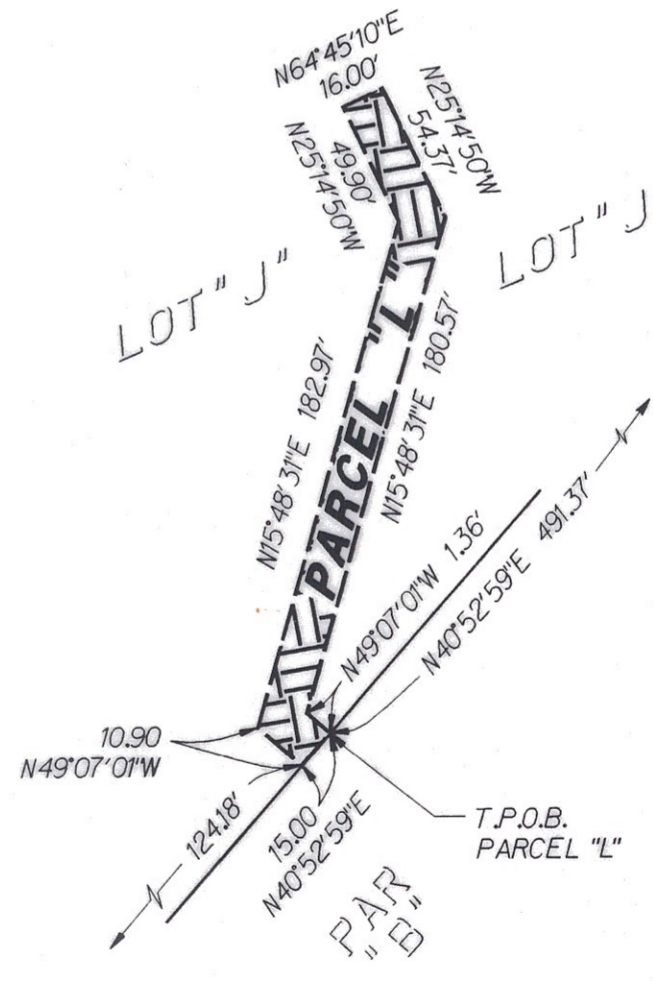
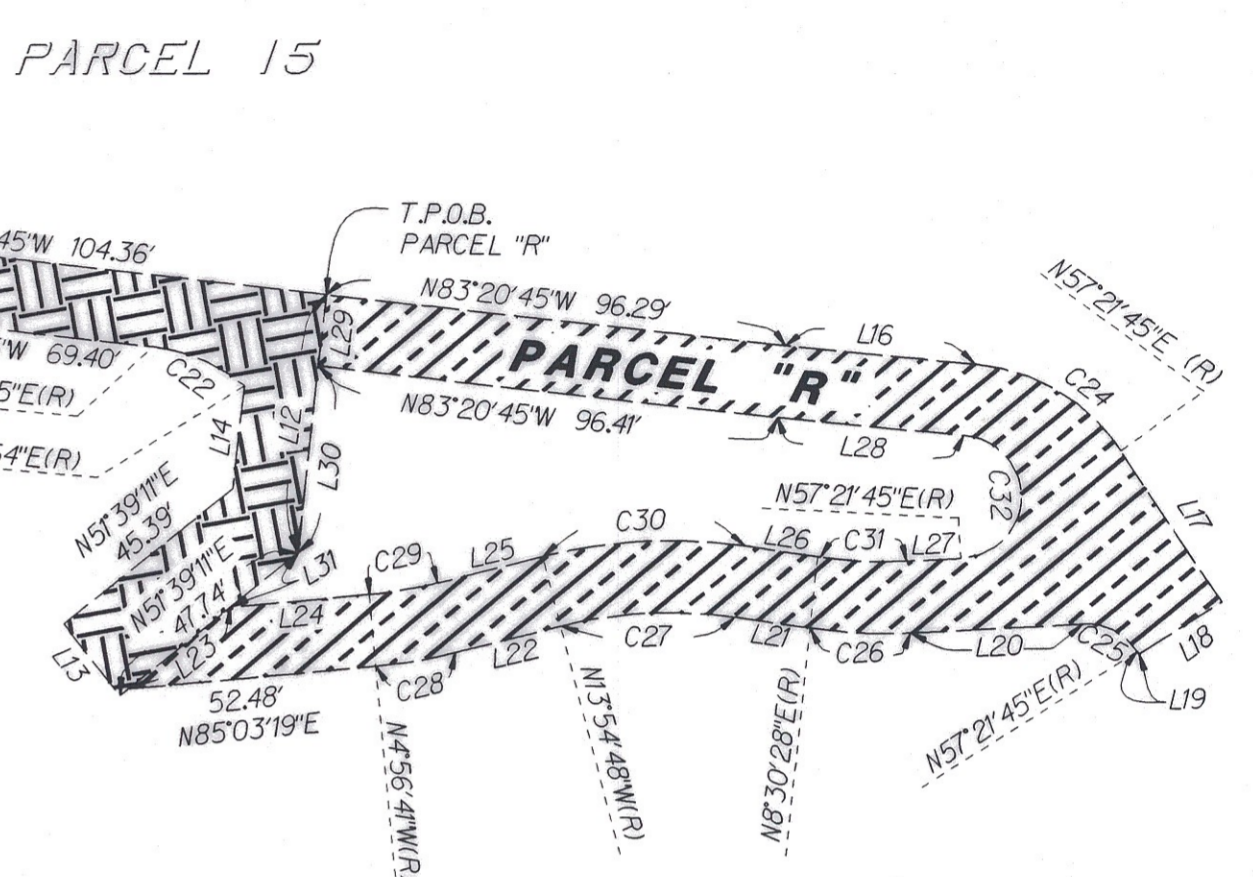
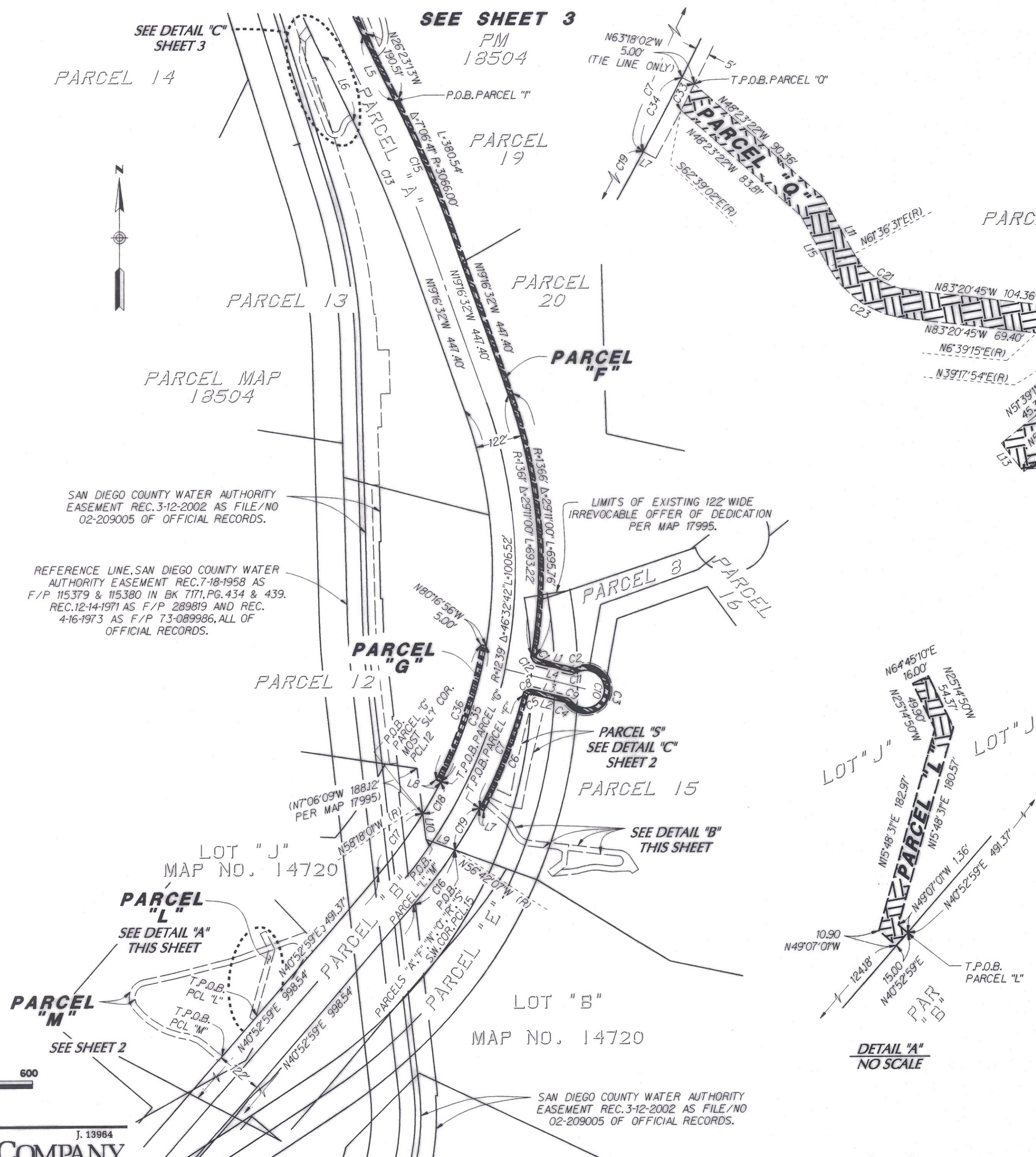


COURSE TABLE

No.	DIRECTION	DISTANCE
L1	N 75° 55' 23" W	75.07'
L2	N 75° 55' 23" W	71.45'
L3	N 75° 55' 23" W	71.45'
L4	N 75° 55' 23" W	75.07'
L5	N 26° 23' 13" W	190.51'
L6	N 26° 23' 13" W	190.51'
L7	N 62° 03' 43" W	5.00'
L8	N 62° 43' 50" W(R)	5.00'
L9	N 69° 22' 00" W	80.08'
L10	N 7° 06' 09" W	68.43'
L11	N 28° 23' 29" W	33.54'
L12	N 6° 39' 15" E	54.39'
L13	N 37° 56' 25" W	19.00'
L14	N 6° 39' 15" E	21.67'
L15	N 28° 23' 29" W	30.89'
L16	N 84° 17' 24" W	39.97'
L17	N 32° 38' 15" W	37.65'
L18	N 57° 21' 45" E	20.00'
L19	N 32° 38' 14" W	0.73'
L20	N 87° 12' 22" E	35.30'
L21	N 81° 29' 32" W	15.93'
L22	N 76° 05' 12" E	22.74'
L23	N 51° 39' 11" E	27.25'
L24	N 85° 03' 19" E	29.74'
L25	N 76° 05' 12" E	22.74'
L26	N 81° 29' 32" W	15.93'
L27	N 87° 12' 22" E	11.40'
L28	N 84° 17' 24" W	39.27'
L29	N 6° 39' 15" E	15.00'
L30	N 6° 39' 15" E	39.39'
L31	N 51° 39' 11" E	18.24'

CURVE TABLE

No.	DELTA	ARC	RADIUS
C1	85° 49' 51"	22.47	15.00
C2	49° 40' 47"	13.01	15.00
C3	279° 21' 34"	341.30	70.00
C4	49° 40' 47"	13.01	15.00
C5	89° 36' 08"	23.46	15.00
C6	13° 27' 47"	320.98	1366.00
C7	13° 27' 47"	319.80	1361.00
C8	89° 36' 08"	31.28	20.00
C9	49° 40' 47"	17.34	20.00
C10	279° 21' 34"	316.92	65.00
C11	49° 40' 47"	17.34	20.00
C12	85° 49' 51"	29.96	20.00
C13	7° 06' 41"	364.77	2939.00
C14	0° 38' 14"	15.14	1361.00
C15	7° 06' 41"	379.92	3061.00
C16	7° 35' 06"	180.17	1361.00
C17	9° 11' 00"	198.59	1239.00
C18	4° 25' 49"	95.80	1239.00
C19	5° 21' 35"	127.32	1361.00
C20	0° 45' 57"	18.19	1361.00
C21	54° 57' 16"	35.49	37.00
C22	32° 38' 39"	21.08	37.00
C23	54° 57' 16"	49.88	52.00
C24	51° 39' 09"	36.06	40.00
C25	60° 09' 24"	13.12	12.50
C26	11° 18' 07"	21.20	107.50
C27	22° 25' 16"	36.20	92.50
C28	8° 58' 07"	16.83	107.50
C29	8° 58' 07"	14.48	92.50
C30	22° 25' 16"	42.07	107.50
C31	11° 18' 07"	18.25	92.50
C32	171° 29' 46"	38.58	12.89
C33	0° 39' 00"	15.50	1366.00
C34	1° 14' 20"	29.42	1361.00
C35	17° 33' 06"	379.55	1239.00
C36	17° 33' 06"	378.02	1234.00



**I.O.D. ACCEPTANCE**  
 CAMINO DEL SUR IN LOT "J" OF MAP 14720, LOT 16 OF MAP 14339 AND LOTS 221 AND 229 OF THE AMENDED MAP OF BLACK MOUNTAIN RANCH UNIT NO. 1, MAP NO. 14307

**STREET DEDICATION**  
 CAMINO DEL SUR AND DEL SUR COURT-NORTH OF SAN DIEGUITO ROAD

**GENERAL UTILITY AND ACCESS EASEMENT**  
 IN PARCELS 8, 12, 15, 16 19 & 20 OF PM 18504

**DRAINAGE EASEMENTS**  
 IN PARCELS 13, 15 & 19 OF PM 18504 AND LOT "J" OF MAP 14720

**DRAINAGE ACCESS EASEMENTS**  
 IN PARCELS 13, 15 & 19 OF PM 18504 AND LOT "J" OF MAP 14720

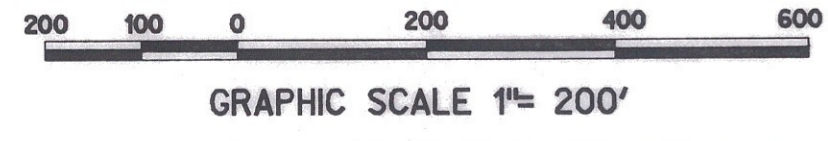
**WATER EASEMENT**  
 IN PARCEL 19 OF PM 18504

**SEWER EASEMENT**  
 IN PARCEL 15 OF PM 18504

**I.O.D. VACATION**  
 PORTION OF I.O.D. FOR PUBLIC STREET PURPOSES IN LOT 229 OF THE AMENDED MAP OF BLACK MOUNTAIN RANCH UNIT NO. 1, MAP 14307, LOT "J" OF MAP 14720 , LOT "B" OF MAP 14720 AND PARCELS "C", 8, 15 & 20 OF PM 18504

**I.O.D. ACCEPTANCE**  
 PEDESTRIAN AND NON-MOTOR VEHICULAR RIGHT OF WAY IN LOTS 221 & 229 OF THE AMENDED MAP OF BLACK MOUNTAIN RANCH UNIT NO. 1, MAP 14307.

CITY OF SAN DIEGO, CALIFORNIA DEVELOPMENT SERVICES SHEET 4 OF 5 SHEETS			W.O. NO. 420070
FOR CITY ENGINEER		DATE	
DESCRIPTION	BY	APPROVED	FILMED
ORIGINAL			11/6 10 100
			11/6 10 100
			11/6 10 100
Complete			1940-6283 CCS 83 COORDINATES 300-1723 LAMBERT COORDINATES
			00071-4-C



SEE SHEET ONE FOR RECORDING INFO.