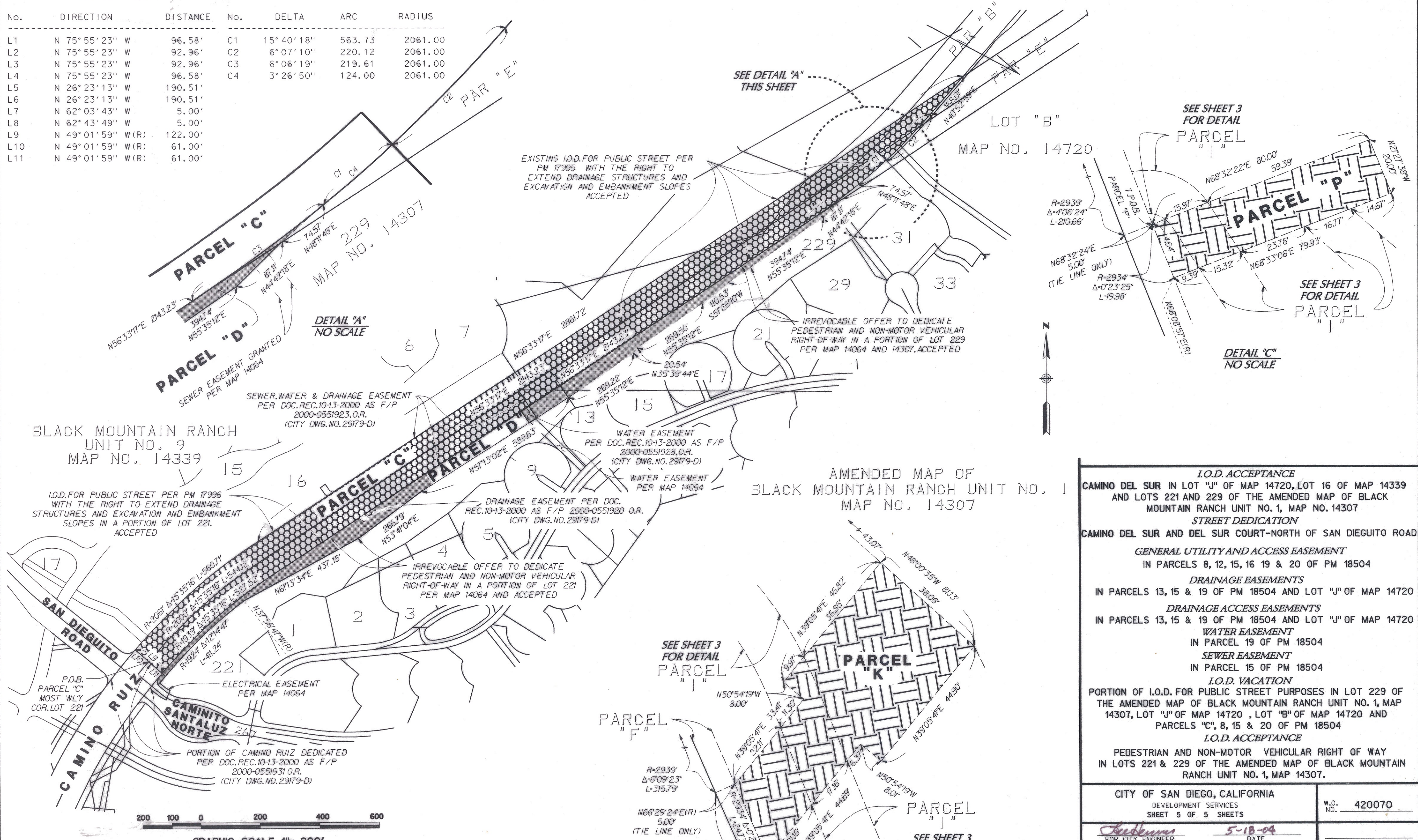


COURSE TABLE

No.	DIRECTION	DISTANCE
L1	N 75° 55' 23" W	96.58'
L2	N 75° 55' 23" W	92.96'
L3	N 75° 55' 23" W	92.96'
L4	N 75° 55' 23" W	96.58'
L5	N 26° 23' 13" W	190.51'
L6	N 26° 23' 13" W	190.51'
L7	N 62° 03' 43" W	5.00'
L8	N 62° 43' 49" W	5.00'
L9	N 49° 01' 59" W (R)	122.00'
L10	N 49° 01' 59" W (R)	61.00'
L11	N 49° 01' 59" W (R)	61.00'

CURVE TABLE

No.	DELTA	ARC	RADIUS
C1	15° 40' 18"	563.73	2061.00
C2	6° 07' 10"	220.12	2061.00
C3	6° 06' 19"	219.61	2061.00
C4	3° 26' 50"	124.00	2061.00



SEE DETAIL "A" THIS SHEET

SEE SHEET 3 FOR DETAIL PARCEL "J"

SEE SHEET 3 FOR DETAIL PARCEL "I"

SEE SHEET 3 FOR DETAIL PARCEL "J"

SEE SHEET 3 FOR DETAIL

DETAIL "B" NO SCALE

SEE SHEET ONE FOR RECORDING INFO.

I.O.D. ACCEPTANCE
 CAMINO DEL SUR IN LOT "J" OF MAP 14720, LOT 16 OF MAP 14339 AND LOTS 221 AND 229 OF THE AMENDED MAP OF BLACK MOUNTAIN RANCH UNIT NO. 1, MAP NO. 14307

STREET DEDICATION
 CAMINO DEL SUR AND DEL SUR COURT-NORTH OF SAN DIEGUITO ROAD

GENERAL UTILITY AND ACCESS EASEMENT
 IN PARCELS 8, 12, 15, 16 19 & 20 OF PM 18504

DRAINAGE EASEMENTS
 IN PARCELS 13, 15 & 19 OF PM 18504 AND LOT "J" OF MAP 14720

DRAINAGE ACCESS EASEMENTS
 IN PARCELS 13, 15 & 19 OF PM 18504 AND LOT "J" OF MAP 14720

WATER EASEMENT
 IN PARCEL 19 OF PM 18504

SEWER EASEMENT
 IN PARCEL 15 OF PM 18504

I.O.D. VACATION
 PORTION OF I.O.D. FOR PUBLIC STREET PURPOSES IN LOT 229 OF THE AMENDED MAP OF BLACK MOUNTAIN RANCH UNIT NO. 1, MAP 14307, LOT "J" OF MAP 14720, LOT "B" OF MAP 14720 AND PARCELS "C", 8, 15 & 20 OF PM 18504

I.O.D. ACCEPTANCE
 PEDESTRIAN AND NON-MOTOR VEHICULAR RIGHT OF WAY IN LOTS 221 & 229 OF THE AMENDED MAP OF BLACK MOUNTAIN RANCH UNIT NO. 1, MAP 14307.

CITY OF SAN DIEGO, CALIFORNIA DEVELOPMENT SERVICES SHEET 5 OF 5 SHEETS				W.O. NO. 420070
FOR CITY ENGINEER		DATE 5-18-04		
DESCRIPTION	BY	APPROVED	DATE	FILMED
ORIGINAL				1940-6283 CCS 83 COORDINATES
				300-1723 LAMBERT COORDINATES
Complete				00071-5-C

RICK ENGINEERING COMPANY
 J. 13984
 San Diego Riverside Orange Phoenix Tucson
 5820 Friars Road • San Diego, CA 92110-2596 • (619) 291-0707 • FAX (619) 291-4165 • www.rickeng.com