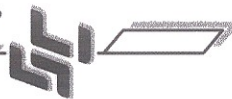


SCALE: 1"=50'



DATA TABLE

NO.	BRNG/DELTA	RADIUS	LENGTH
C1	N89°05'49"W	---	59.22'
C2	10°27'24"	499.00'	91.07'
C3	06°58'15"	346.75'	42.19'
C4	14°45'11"	207.25'	53.36'
C5	N03°43'09"E	---	65.18'
C6	N89°00'50"W	---	18.44'
C7	N01°02'56"E	---	49.27'
C8	84°26'09"	20.00'	29.47'
C9	172°14'13"	45.00'	135.27'
C10	77°20'47"	20.00'	27.00'
C11	N11°30'13"E	---	1.20'
C12	N11°15'49"E	---	26.49'
C13	N88°57'04"W	---	40.00'

LEGEND

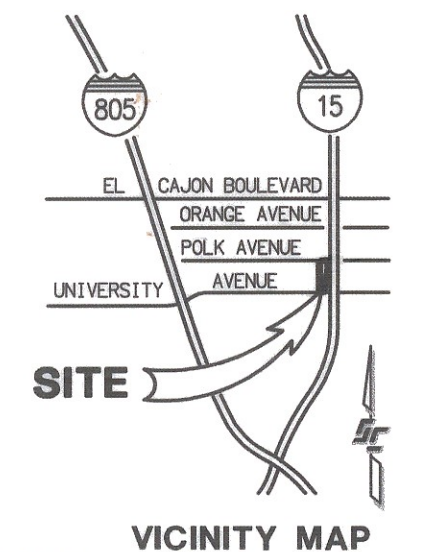
- INDICATES A PORTION OF 40TH STREET, DEDICATED PER MAP 1007, VACATED PARCEL "A" (0.344 ACRES)
- INDICATES A PORTION OF 40TH STREET, DEDICATED PER MAP 1007, VACATED PARCEL "B" (0.243 ACRES)
- INDICATES UNNAMED ALLEY DEDICATED PER MAP 1007, VACATED PARCEL "C" (0.276 ACRES)
- INDICATES A PORTION OF STATE PROPERTY, USED AS PUBLIC STREET, VACATED PARCEL "D" (0.139 ACRES)

BASIS OF BEARINGS

THE BASIS OF BEARINGS FOR THIS PLAT IS THE EASTERLY LINE OF BLOCK 39, MAP 1007, PER R.O.S. NO. 17279, I.E. N01°02'56"E

REFERENCE DRAWINGS

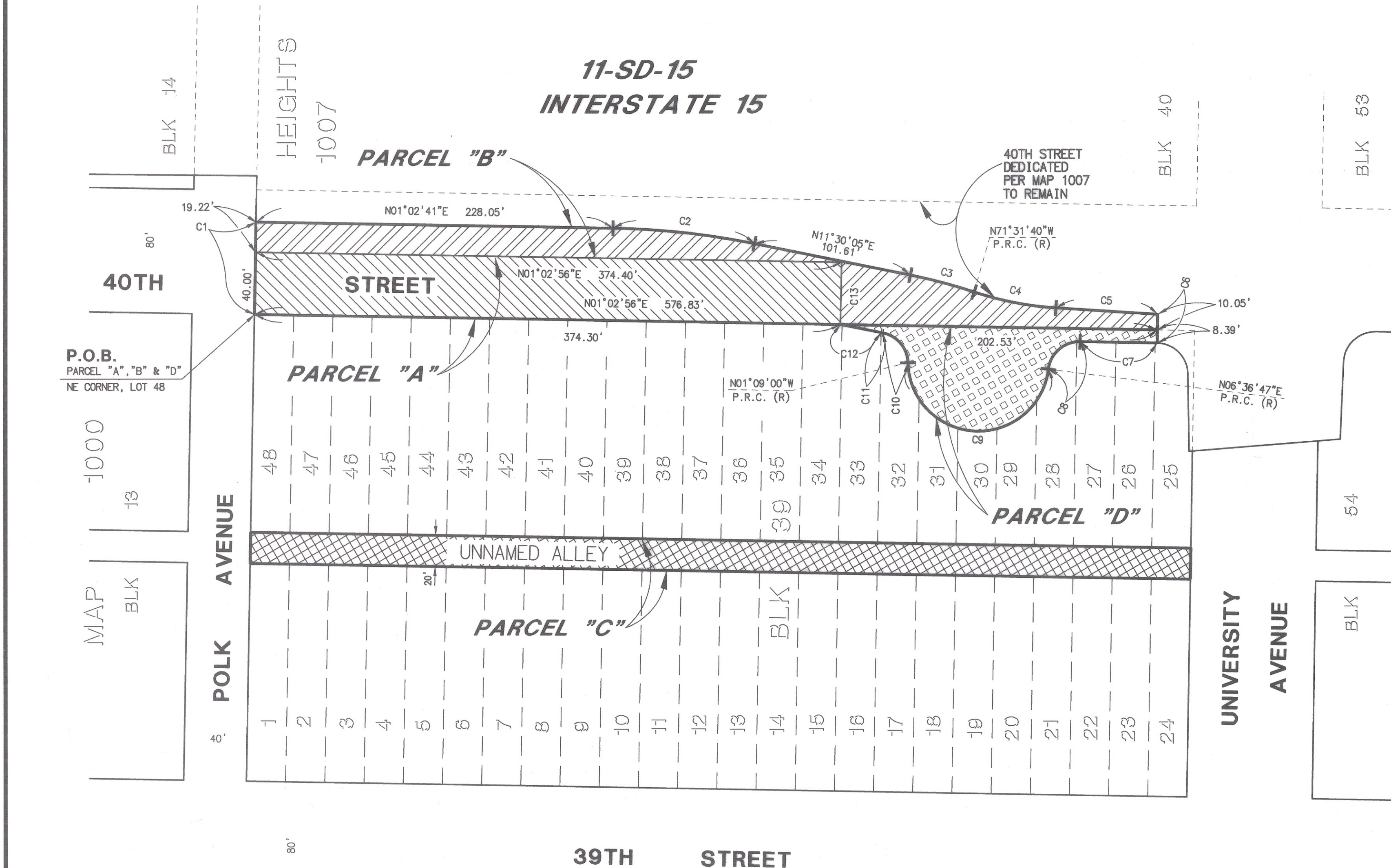
MAP 1007
R.O.S. NO. 17279



RESOLUTION R-296777
ADOPTED ON JULY 9, 2002
DOC # 2002-0603203
RECORDED ON JULY 18, 2002

STREET VACATION - 40TH STREET
BETWEEN UNIVERSITY AVENUE AND POLK AVENUE
ALLEY VACATION -
UNNAMED ALLEY EAST OF 39TH STREET, BLOCK 39, MAP 1007

CITY OF SAN DIEGO, CALIFORNIA DEVELOPMENT SERVICES DEPARTMENT SHEET 1 OF 1 SHEET				S.A. 01-558 W.O. 411089
FOR CITY ENGINEER		DATE		
DESCRIPTION	BY	APPROVED	DATE	FILMED
ORIGINAL	SCEng			11/14/02
	AEA		12-12-02	11/14/02
				11/14/02
				11/14/02
				1852-6291 NAD 83 COORDINATES
				212-1731 LAMBERT COORDINATES
COMPLETED				00075-C



BLK 14
HEIGHTS 1007
PARCEL "B"
11-SD-15 INTERSTATE 15
BLK 40
BLK 53
40TH STREET
PARCEL "A"
UNNAMED ALLEY
PARCEL "C"
UNIVERSITY AVENUE
BLK 54
BLK 12
BLK 38
CITY MAP
39TH STREET
JN: 01020.01



C. J. Hopwood 6/1/02
CLIVE J. HOPWOOD
PLS 6800
DATE

STEVENS-CRESTO ENGINEERING, INC.
CIVIL ENGINEERS LAND PLANNERS SURVEYORS
9620 CHESAPEAKE DRIVE
SUITE 107
SAN DIEGO, CA 92123-1324
PHONE: 858.694.5660
FAX: 858.694.5661
WWW.SCENGR.COM