



SCALE 1" = 50'
 MAPPING ANGLE = -0°28'24.49"
 STATION: GPS 172 (ROS 14492)

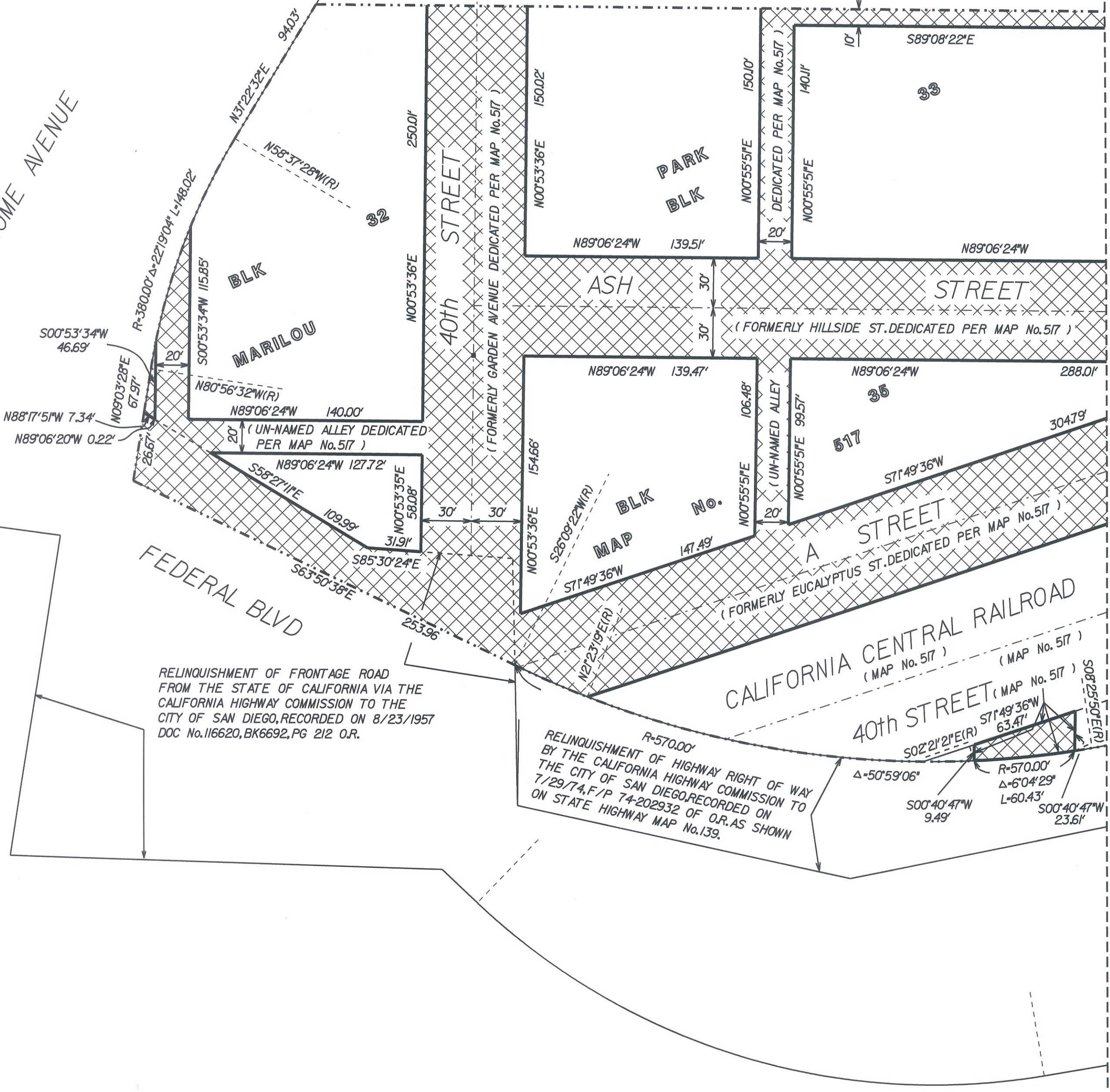
LEGEND



P.O.B. POINT OF BEGINNING

RELINQUISHMENT OF FRONTAGE ROAD FROM THE STATE OF CALIFORNIA VIA THE CALIFORNIA HIGHWAY COMMISSION TO THE CITY OF SAN DIEGO, RECORDED ON 8/23/1957 DOC No. 116620, BK6692, PG 212 O.R.

HOME AVENUE



RELINQUISHMENT OF FRONTAGE ROAD FROM THE STATE OF CALIFORNIA VIA THE CALIFORNIA HIGHWAY COMMISSION TO THE CITY OF SAN DIEGO, RECORDED ON 8/23/1957 DOC No. 116620, BK6692, PG 212 O.R.

RELINQUISHMENT OF HIGHWAY RIGHT OF WAY BY THE CALIFORNIA HIGHWAY COMMISSION TO THE CITY OF SAN DIEGO, RECORDED ON 7/29/74, F/P 74-202932 OF O.R. AS SHOWN ON STATE HIGHWAY MAP No. 139.

STATE ROUTE 94

MS 748

MATCHLINE SEE SHEET 3 OF 3

PREPARED BY:

CITY OF SAN DIEGO ENGINEERING & CAPITAL PROJECTS DEPT., FIELD DIVISION - LAND SURVEY SECTION, UNDER THE DIRECTION OF FREDERICK R. LePAGE, ASST. LAND SURVEYOR.



Frederick R. LePage 1/15/2003
 FREDERICK R. LePAGE P.L.S. 7524 DATE

RESOLUTION No.: _____ ADOPTED: _____
 F/P: _____ RECORDED: _____

STREET VACATION- PORTIONS OF: 'A', ASH, 40TH, 41st STREETS, FEDERAL BLVD, UN-NAMED ALLEYS IN BLOCKS 32, 33 & 35 ALL WITHIN MARILOU PARK, MAP No. 517

DESCRIPTION	BY	APPD	DATE	FILMED
ORIGINAL	FRL	LEC		MAY 04 '04
				MAY 04 '04
				MAY 04 '04
				MAY 04 '04

CITY OF SAN DIEGO, CALIFORNIA
 SHEET 2 OF 3 SHEET
Frederick R. LePage 3-26-04
 FOR CITY ENGINEER DATE

W.O. 360630
 1842-1697
 NAD 83 COORDINATES
 202-1737
 NAD 27 COORDINATES
 00080-2-C

AS BUILT

STATUS

16297

Close
3/26/04