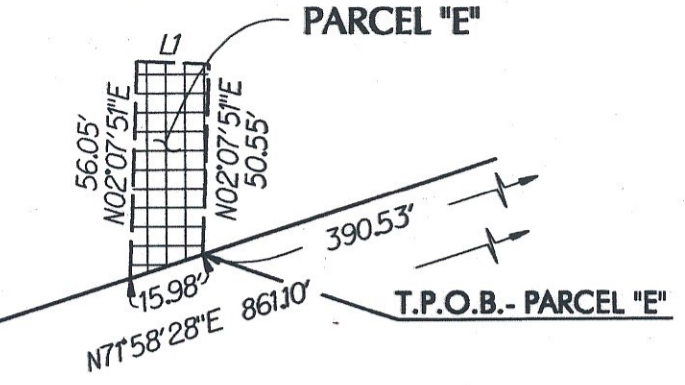


No.	DIRECTION	DISTANCE
L1	N 87° 52' 09" E	15.00
L2	N 11° 28' 24" W	11.50
L3	N 11° 28' 24" W	11.50
L4	N 71° 58' 28" E	20.00
L5	N 18° 01' 32" W	39.06
L6	N 66° 27' 50" E	35.97
L7	N 18° 01' 32" W	14.55
L8	N 34° 41' 21" W	43.81
L9	N 53° 05' 30" W	24.54
L10	N 53° 05' 30" W	28.59
L11	N 34° 41' 21" E	47.86
L12	N 55° 18' 39" E	25.00

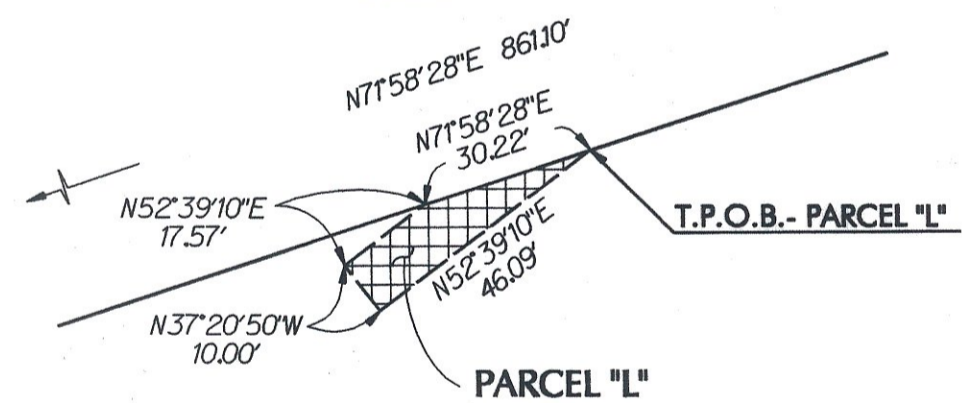
No.	DELTA	ARC	RADIUS
C1	12° 36' 19"	24.20	110.00
C2	13° 53' 46"	31.53	110.00

DETAIL "C"
NO SCALE

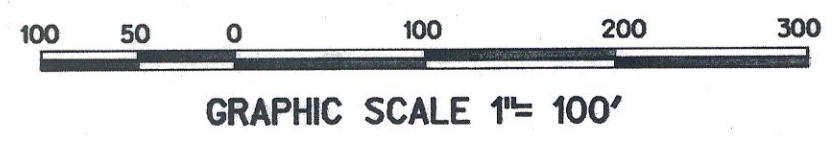


SEE DETAIL "C" THIS SHEET

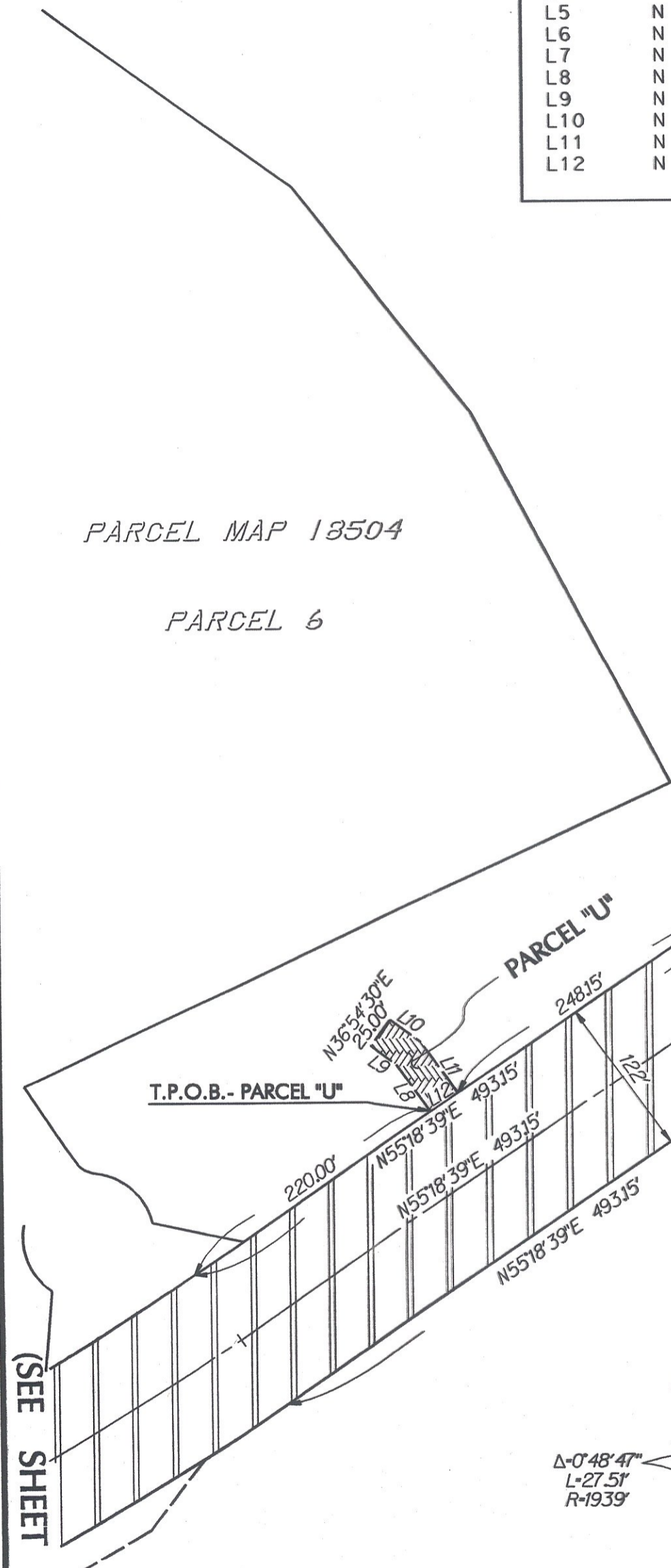
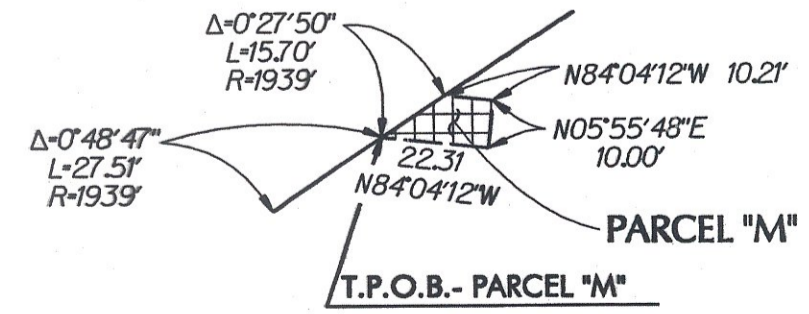
DETAIL "B"
NO SCALE



SEE SHEET 1
FOR RECORDING INFO



DETAIL "A"
NO SCALE



(SEE SHEET 4)

(SEE SHEET 2)

STREET DEDICATION, CARMEL VALLEY ROAD AND DRAINAGE, ACCESS, AND WATER EASEMENTS OVER PORTIONS OF PARCELS 1-7 INCLUSIVE OF PM 18504

CITY OF SAN DIEGO, CALIFORNIA DEVELOPMENT SERVICES DEPARTMENT SHEET 3 OF 4 SHEETS				J.O. NO. 420459 P.T.S. NO. 4243
FOR CITY ENGINEER		DATE		
DESCRIPTION	BY	APPROVED	DATE	FILMED
	G.H.	✓	11/27/04	JAN 05 105
300-1723 CCS 83 COORDINATES				
1940-6283 LAMBERT COORDINATES				
COMPLETE				00083-3-C