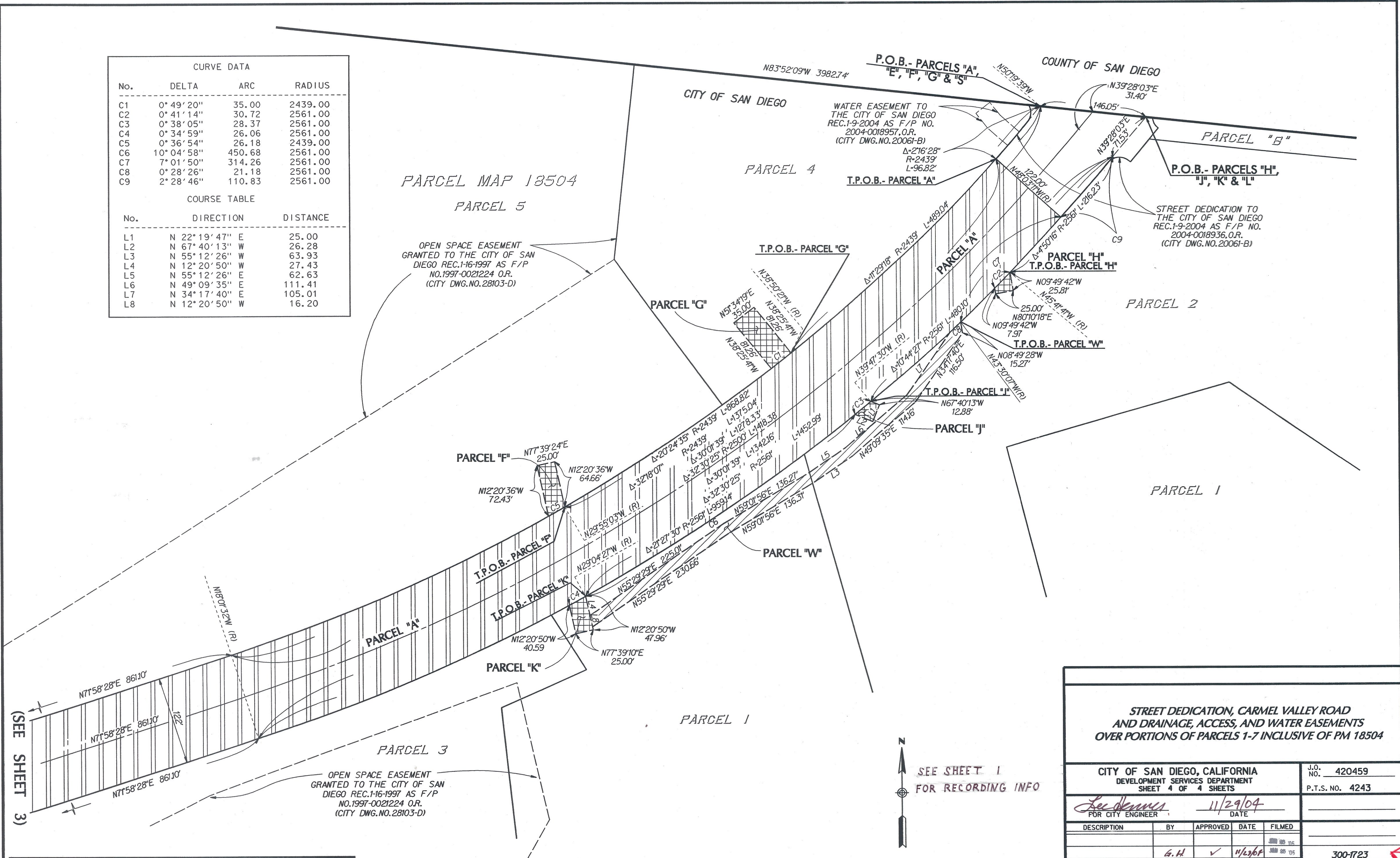


CURVE DATA			
No.	DELTA	ARC	RADIUS
C1	0° 49' 20"	35.00	2439.00
C2	0° 41' 14"	30.72	2561.00
C3	0° 38' 05"	28.37	2561.00
C4	0° 34' 59"	26.06	2561.00
C5	0° 36' 54"	26.18	2439.00
C6	10° 04' 58"	450.68	2561.00
C7	7° 01' 50"	314.26	2561.00
C8	0° 28' 26"	21.18	2561.00
C9	2° 28' 46"	110.83	2561.00

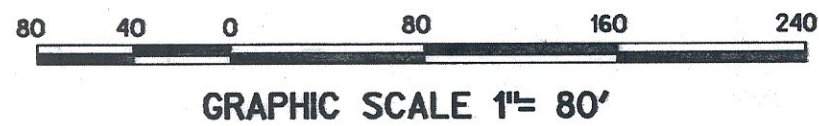
COURSE TABLE		
No.	DIRECTION	DISTANCE
L1	N 22° 19' 47" E	25.00
L2	N 67° 40' 13" W	26.28
L3	N 55° 12' 26" W	63.93
L4	N 12° 20' 50" W	27.43
L5	N 55° 12' 26" E	62.63
L6	N 49° 09' 35" E	111.41
L7	N 34° 17' 40" E	105.01
L8	N 12° 20' 50" W	16.20



(SEE SHEET 3)

OPEN SPACE EASEMENT  
GRANTED TO THE CITY OF SAN  
DIEGO REC.1-16-1997 AS F/P  
NO.1997-0021224 O.R.  
(CITY DWG.NO.28103-D)

SEE SHEET 1  
FOR RECORDING INFO



**STREET DEDICATION, CARMEL VALLEY ROAD  
AND DRAINAGE, ACCESS, AND WATER EASEMENTS  
OVER PORTIONS OF PARCELS 1-7 INCLUSIVE OF PM 18504**

CITY OF SAN DIEGO, CALIFORNIA DEVELOPMENT SERVICES DEPARTMENT SHEET 4 OF 4 SHEETS				J.O. NO. 420459 P.T.S. NO. 4243
FOR CITY ENGINEER		DATE		
DESCRIPTION	BY	APPROVED	DATE	FILMED
	G.H.	✓	11/29/04	300 88 05
				300-1723 CCS 83 COORDINATES
				1940-6283 LAMBERT COORDINATES
COMPLETE				00083-4-C