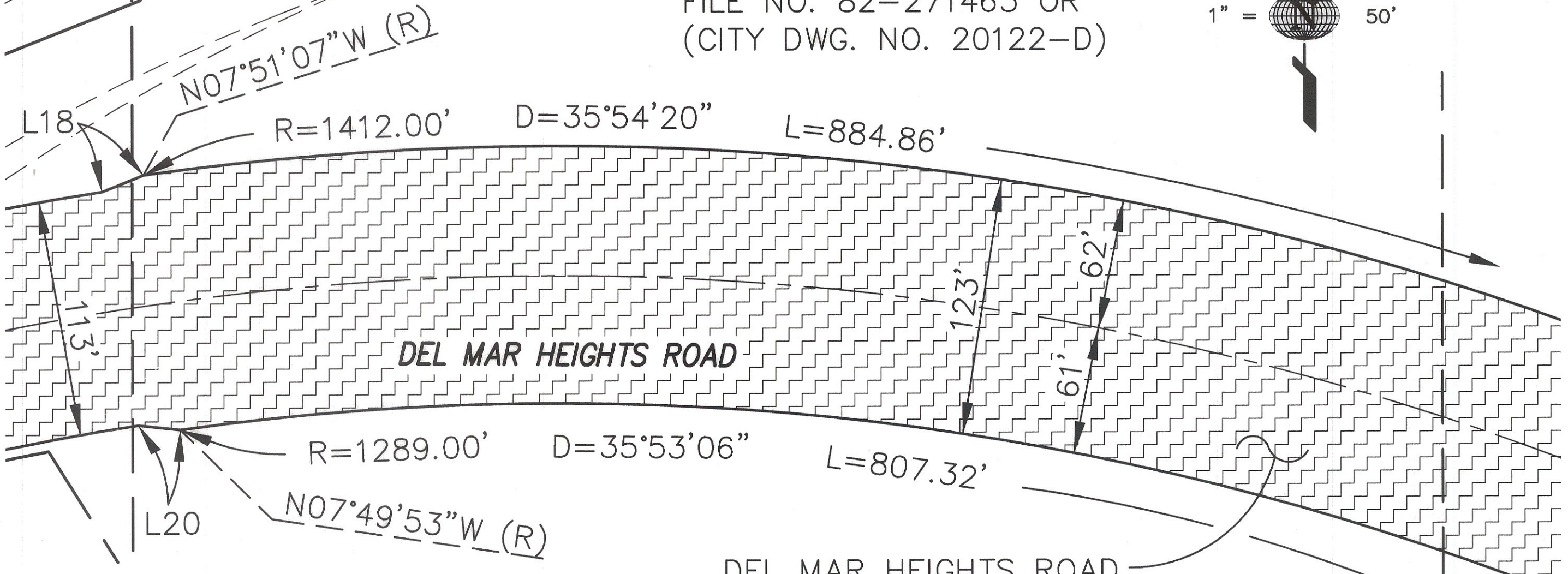


PARCEL 4
PM 18755

BLACK MOUNTAIN ROAD
DEDICATED 09/01/1982 AS
FILE NO. 82-271463 OR
(CITY DWG. NO. 20122-D)



DEL MAR HEIGHTS ROAD

DEL MAR HEIGHTS ROAD
STREET DEDICATION
PARCEL 'F'

AREA: 3.663 AC.

PARDEE HOMES
APN: 305-031-12

PARCEL 3
PM 18971

LINE TABLE		
LINE	LENGTH	BEARING
L16	20.62'	N87°21'48"W
L17	8.62'	N78°36'02"E
L18	21.17'	N68°04'07"E
L19	90.41'	N78°36'02"E
L20	20.02'	N83°47'52"W
L21	81.78'	N78°36'02"E

MATCHLINE
SEE SHEET 6

PARCEL 2
MATCHLINE
SEE SHEET 4

PARCEL MAP
BOUNDARY

T.P.O.B.
PARCEL 'G'

P.O.B.
PARCEL 'G'
NE CORNER
PARCEL 2

N50°56'52"E
9.71'

R=1125.00'
D=00°44'58"
L=14.71'

R=20.00'
D=44°58'40"
L=15.70'

DEL MAR HEIGHTS RD.
ST. DEDICATION
PARCEL 'G'
AREA: 59.87 S.F.

DETAIL 'A'
NO SCALE

PARCEL 2
PM 18971

Latitude 33

Planning and Engineering
4933 Paramount Drive, 2nd Floor
San Diego, CA 92123
858-751-0633 Fax 858-751-0634



H:\400\482.10\MAPS\PLATS\DMHR-PL05.dwg 4/7/2003 10:34:56 AM PST

SEE SHT. 1 OF 6 FOR RECORDING INFO.

C. John Eardensohn
C. JOHN EARDENSOHN L.S. 5278
REGISTRATION EXPIRES 12-31-03
4/16/03
DATE

STREET DEDICATION - DEL MAR HEIGHTS ROAD

A PORTION OF PARCEL 3 OF PM 18971

DESCRIPTION	BY	APPROVED	DATE	FILMED
ORIGINAL	LAT33	K.S.	7/22/03	SEP 8 03

CITY OF SAN DIEGO, CALIFORNIA
DEVELOPMENT REVIEW DEPARTMENT
SHEET 5 OF 6 SHEETS

Lee Hennes
FOR CITY ENGINEER
7/24/03
DATE

W.O. NO. 420936
1930-6271
CCS '83 COORDINATES
290-1711
LAMBERT COORDINATES
00088-5-C

Complete