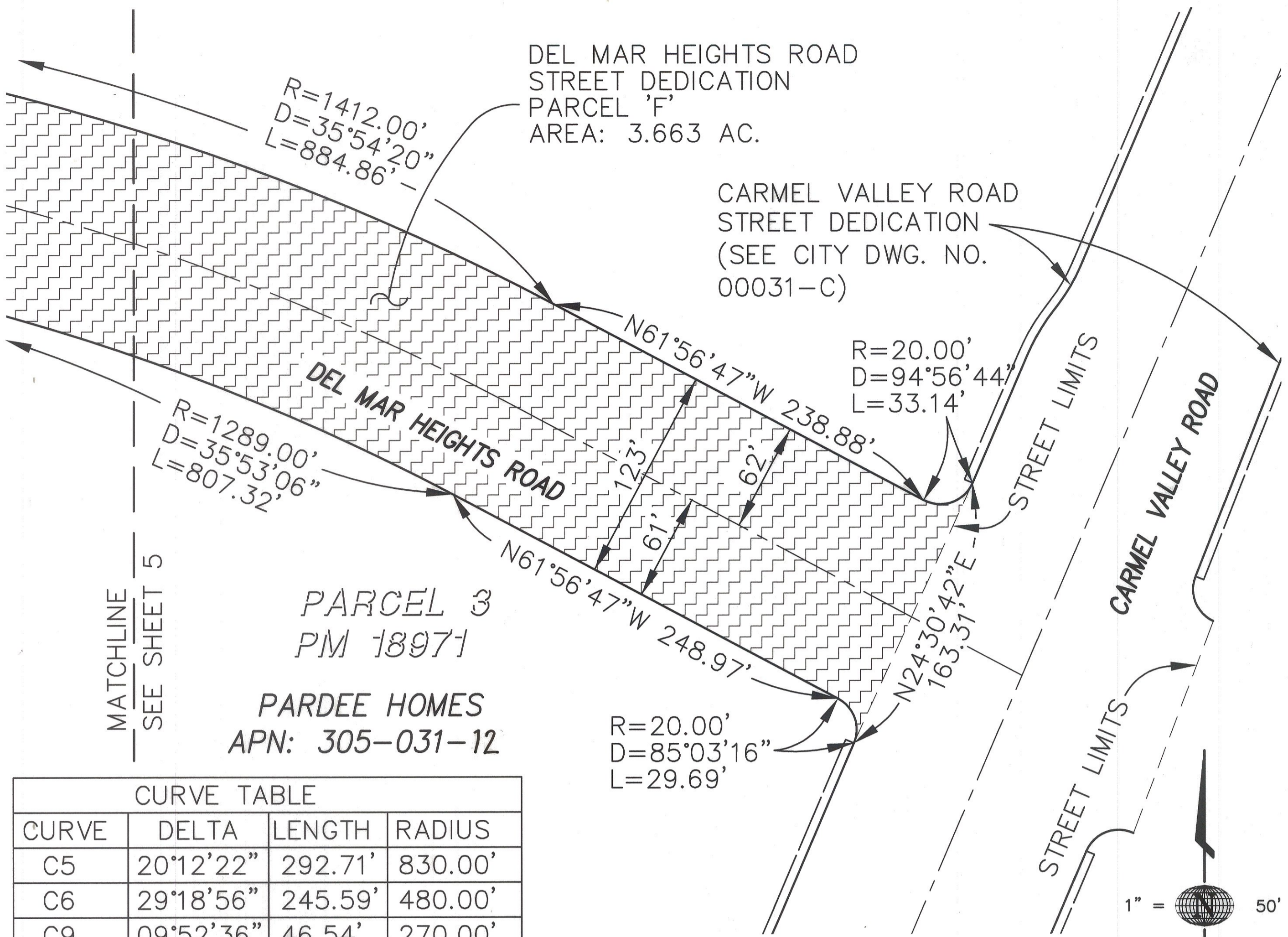


DEL MAR HEIGHTS ROAD
STREET DEDICATION
PARCEL 'F'
AREA: 3.663 AC.

CARMEL VALLEY ROAD
STREET DEDICATION
(SEE CITY DWG. NO.
00031-C)

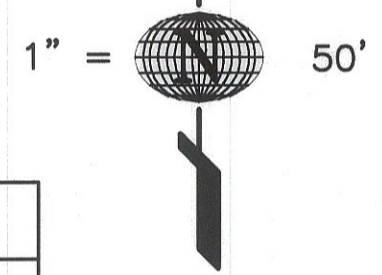


MATCHLINE
SEE SHEET 5

PARCEL 3
PM 18971
PARDEE HOMES
APN: 305-031-12

CURVE TABLE			
CURVE	DELTA	LENGTH	RADIUS
C5	20°12'22"	292.71'	830.00'
C6	29°18'56"	245.59'	480.00'
C9	09°52'36"	46.54'	270.00'
C10	08°02'49"	37.92'	270.00'
C11	04°13'00"	61.08'	830.00'
C12	01°29'04"	53.40'	2061.00'
C13	95°14'37"	33.25'	20.00'
C14	02°07'10"	29.00'	784.00'
C15	11°34'07"	46.44'	230.00'

CURVE TABLE			
CURVE	DELTA	LENGTH	RADIUS
C16	03°50'07"	55.56'	830.00'
C17	180°00'00"	193.21'	61.50'
C18	222°53'17"	233.41'	60.00'
C19	84°12'57"	29.40'	20.00'
C20	02°09'19"	32.91'	875.00'
C21	11°29'26"	46.13'	230.00'
C22	12°24'24"	232.78'	1075.00'
C23	02°42'41"	66.58'	1407.00'
C24	02°42'30"	61.17'	1294.00'



Latitude 33

Planning and Engineering
4933 Paramount Drive, 2nd Floor
San Diego, CA 92123
858-751-0633 Fax 858-751-0634



H:\400\482.10\MAPS\PLATS\DMHR-PL06.dwg 3/10/2003 2:30:58 PM PST

SEE SHET 1 OF 6 FOR RECORDING INFO.

C. John Eardensohn

4/16/03

C. JOHN EARDENSOHN L.S. 5278 DATE
REGISTRATION EXPIRES 12-31-03

STREET DEDICATION - DEL MAR HEIGHTS ROAD

A PORTION OF PARCEL 3 OF PM 18971

DESCRIPTION	BY	APPROVED	DATE	FILMED
ORIGINAL	LAT33	K.S.	7/22/03	SEP 2 03

CITY OF SAN DIEGO, CALIFORNIA
DEVELOPMENT REVIEW DEPARTMENT
SHEET 6 OF 6 SHEETS

Sec. Dennis
FOR CITY ENGINEER

7/24/03
DATE

W.O. NO. 420936

1930-6271
CCS '83 COORDINATES

290-1711
LAMBERT COORDINATES

Complete

00088-6-C