

REFERENCES:

RECORD OF SURVEY 8611; RECORD OF SURVEY 15091; RECORD OF SURVEY 22719
 PARCEL MAP NO. 19194; PARCEL MAP NO. 17046; PARCEL MAP 20074
 ROBINHOOD ROAD MAP NO. 14046; OCEANVIEW HILLS CORPORATE CENTER UNIT NO. 2
 MAP NO. 14206; OCEANVIEW HILLS CORPORATE CENTER UNIT NO. 3; MAP NO. 15157;
 METROPOLITAN AIR PARK MAP NO. 13979; OCEAN VIEW HILLS MAP NO. 16245.

ASSESSOR'S PARCEL NUMBER:

645-050-26; 645-050-28 AND 33; 645-050-34 AND 35; 645-050-43

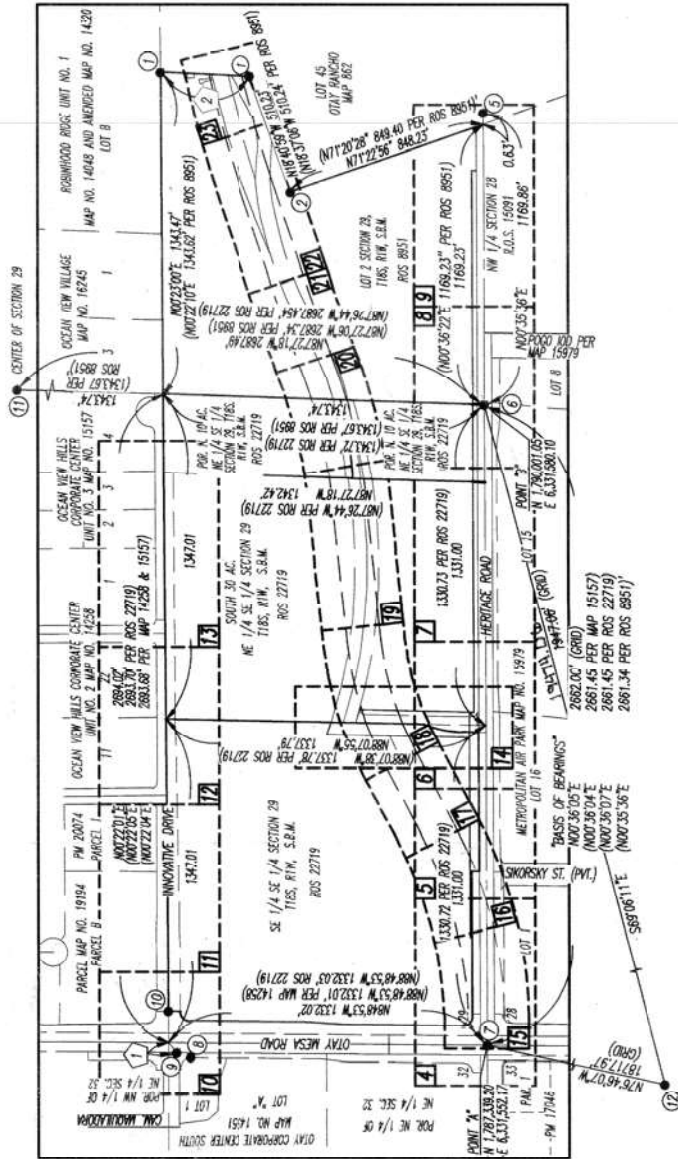
DATA TABLE		
NO.	BEARING	DIST. COMMENTS
1	N47°01'13"W	3.72' (N47°32'27"W 3.76' PER MAP 14059)
2	N88°45'48"W	378.85' (N88°44'44"W 379.01' PER ROS 8851)

BASIS OF BEARINGS:

THE BASIS OF BEARINGS FOR THIS DRAWING IS THE CALIFORNIA COORDINATE SYSTEM (CCS83, ZONE 8, EPOCH 1981.15). TRANSFORMED MEASUREMENTS TO POINTS 'A' AND 'B' ARE SHOWN HEREON. THE CCS83 COORDINATES OF POINTS 'A' AND 'B' ARE ESTABLISHED FROM GPS STATION 209 AND GPS STATION 189 PER RECORD OF SURVEY NO. 14482. THE BEARING FROM POINT 'A' TO POINT 'B' IS N007°05'05"E.

QUOTED BEARINGS AND DISTANCES FROM REFERENCE MAPS OR DEEDS MAY OR MAY NOT BE IN TERMS OF SMO SYSTEM

THE COMBINED GRID FACTOR AT STATION 189 IS 1.0000238. GRID DISTANCE = GROUND DISTANCE X COMBINED GRID FACTOR. ELEVATION AT POINT 'A' IS 534.57 MSL (MSD 29)



LEGEND



PROPERTY LINE
 RIGHT OF WAY
 CENTER LINE
 P.O.B.
 INDICATES TRIANGLE POINT OF BEGINNING.
 INDICATES TRIANGLE POINT OF BEGINNING.
 INDICATES TRIANGLE POINT OF BEGINNING.
 RECORD DATA, AS NOTED.
 FOUND MONUMENT AS NOTED.

- 1 FOUND 2" LP. & DISK STAMPED ROE 2194S PER CERTIFICATE OF CORRECTION 2003-1067296. MAP 14320
- 2 FOUND 1.5" BRASS DISK STAMPED S 29 R 2 OLAJ TUBS WITH SEM - JOHNSON FRANK ASSOC., - LS 8042 PER ROS 20985.
- 3 FOUND 2" LP. & DISK MKD. ROE 22606 PER ROS 16504 & ROS 20985.
- 4 FOUND 3/4" LP. & PLASTIC PLUG STAMPED LS 4306 PER ROS 15091.
- 5 FOUND 2" LP. & DISK MKD. 2783 PER ROS 14985, HELD FOR LINE
- 6 FOUND 2" LP. & DISK MKD. CE PER ROS 8851, ROS 15091, ROS 7893, ROS 22180 & MAP 15157.
- 7 FOUND WELL MON/W 3.5" BRASS DISK PER ROS 8843 & ROS 14492 (GPS STATION NO. 189 PER ROS 14492)
- 8 FOUND 3/4" LP. & PLASTIC PLUG STAMPED LS 5276 PER MAP NO. 14651
- 9 FOUND 2" COOT DISK IN WELL MON. PER MAPS 13882, 15157 & 14258
- 10 PK WALL & DISK STAMPED ROE 22606 PER MAP NO. 14258 & MAP 19194.
- 11 FOUND 2" LP. & DISK STAMPED LS 3663 PER ROS 8851 & MAP 14048.
- 12 FOUND LEAD & BRASS DISK STAMPED LS 4324 PER ROS 14492 (GPS STATION 209).

2022-07-01 14:02:22-02901515, 2022-02901517, 2022-03005256
 DOCUMENT NO. 2022-02901515, 2022-02901517, 2022-03005256,
 2022-02901516, 2022-02901517
 REDRAWN: 2024.11.15, 2024.12.04, 2024.12.16, 2024.

INDEX KEY MAP

SCALE 1"=400'

SHEET NO.	DESCRIPTION
1	HERITAGE ROAD DEDICATION
2	INNOVATIVE DRIVE IRREVOCABLE OFFER OF DEDICATION
3	DOWNSIDE STREET DEDICATION
4	OLAJ VALLEY ROAD IRREVOCABLE OFFER OF DEDICATION

CCS 83 GRID NORTH
 -0°24'37.53" AT POINT 'A'
 GEODETIC NORTH

PREPARED BY:

John Leppert
 LEPPERT ENGINEERING CORP.
 JOHN D. LEPPERT, ROE 26283
 12/20/2021 DATE

Leppert Engineering CORPORATION
 6190 Governor Drive, Suite 205, San Diego, Ca. 92122-2848
 Phone: (619) 597-2001 Fax: (619) 597-2009



PUBLIC STREET EASEMENT AND IRREVOCABLE OFFER OF DEDICATION
 IN SECTION 29, TOWNSHIP 18 SOUTH, RANGE 1 WEST, SAN BERNARDINO BASE AND MERIDIAN

CITY OF SAN DIEGO, CALIFORNIA		PTS. NO. 610624
SHEET 1 OF 23 SHEET		1786-6323
PERMITTED BY	DATE	CCS MAP 83 COORDINATES
DESCRIPTION	BY	146-17629
ORIGINAL	LEC	LAMBERT COORDINATES
		40995-1-C

EXISTING EASEMENTS OF RECORD:

- 1. AN EASEMENT FOR PUBLIC UTILITIES AND INCIDENTAL PURPOSES, RECORDED FEBRUARY 26, 1974 AS INSTRUMENT NO. 74-047287 OF OFFICIAL RECORDS.
IN FAVOR OF: SAN DIEGO GAS & ELECTRIC COMPANY
- 2. AN EASEMENT FOR PUBLIC UTILITIES AND INCIDENTAL PURPOSES, RECORDED AUGUST 6, 1974 AS INSTRUMENT NO. 74-212162 OF OFFICIAL RECORDS.
IN FAVOR OF: SAN DIEGO GAS & ELECTRIC COMPANY
- 3. AN EASEMENT FOR DRAIN OR DRAINS AND INCIDENTAL PURPOSES, RECORDED OCTOBER 20, 1975 AS INSTRUMENT NO. 75-289483 OF OFFICIAL RECORDS.
IN FAVOR OF: THE CITY OF SAN DIEGO, A MUNICIPAL CORPORATION
- 4. AN EASEMENT FOR DRAIN OR DRAINS AND INCIDENTAL PURPOSES, RECORDED OCTOBER 20, 1975 AS INSTRUMENT NO. 75-289484 OF OFFICIAL RECORDS.
IN FAVOR OF: THE CITY OF SAN DIEGO, A MUNICIPAL CORPORATION
- 5. EASEMENT(S) FOR THE PURPOSE(S) SHOWN BELOW AND RIGHTS INCIDENTAL THEREOF AS RESERVED IN A DOCUMENT:
PURPOSE: WATER FACILITIES, INGRESS AND EGRESS
RECORDING DATE: MARCH 30, 1976
RECORDING NO.: 76-092380
IN FAVOR OF: MELVIN V. INGALLS AND ANNA M. INGALLS, HUSBAND AND WIFE, AS JOINT TENANTS
- 6. AN EASEMENT FOR ROAD AND INCIDENTAL PURPOSES, RECORDED JULY 14, 1977 AS INSTRUMENT NO. 77-282301 OF OFFICIAL RECORDS.
IN FAVOR OF: MELVIN V. INGALLS AND ANNA M. INGALLS, HUSBAND AND WIFE, AS JOINT TENANTS
- 7. AN EASEMENT FOR PUBLIC STREET AND INCIDENTAL PURPOSES, RECORDED JULY 20, 1977 AS INSTRUMENT NO. 77-291278 OF OFFICIAL RECORDS.
IN FAVOR OF: THE CITY OF SAN DIEGO, A MUNICIPAL CORPORATION
- 8. AN EASEMENT FOR PUBLIC STREET AND INCIDENTAL PURPOSES, RECORDED JULY 20, 1977 AS INSTRUMENT NO. 77-291278 OF OFFICIAL RECORDS.
IN FAVOR OF: THE CITY OF SAN DIEGO, A MUNICIPAL CORPORATION
- 9. AN OFFER OF DEDICATION FOR PUBLIC STREET AND INCIDENTAL PURPOSES, RECORDED JULY 21, 1977 AS INSTRUMENT NO. 77-291279 OF OFFICIAL RECORDS.
TO: THE CITY OF SAN DIEGO,
AN EASEMENT FOR PUBLIC STREET AND INCIDENTAL PURPOSES, RECORDED JULY 20, 1977 AS INSTRUMENT NO. 77-291281 OF OFFICIAL RECORDS.
IN FAVOR OF: THE CITY OF SAN DIEGO, A MUNICIPAL CORPORATION
- 10. AN EASEMENT FOR ROAD AND UTILITIES AND INCIDENTAL PURPOSES, RECORDED DECEMBER 7, 1977 AS INSTRUMENT NO. 77-505787 OF OFFICIAL RECORDS.
IN FAVOR OF: DAN PÖHLER AND WANCY PÖHLER, HUSBAND AND WIFE
- 12. AN EASEMENT FOR ROAD AND UTILITIES AND INCIDENTAL PURPOSES, RECORDED JULY 13, 1982 AS INSTRUMENT NO. 82-215350 OF OFFICIAL RECORDS.
IN FAVOR OF: MELVIN V. INGALLS AND ANNA M. INGALLS, HUSBAND AND WIFE, AS JOINT TENANTS AND DAN PÖHLER AND WANCY PÖHLER, HUSBAND AND WIFE, AS JOINT TENANTS
- 13. AN EASEMENT FOR PUBLIC UTILITIES AND INCIDENTAL PURPOSES, RECORDED JULY 8, 1985 AS INSTRUMENT NO. 85-242806 OF OFFICIAL RECORDS.
IN FAVOR OF: SAN DIEGO GAS & ELECTRIC COMPANY
- 14. AN EASEMENT FOR HIGHWAY RIGHT OF WAY TOGETHER WITH THE PRIVILEGE AND RIGHT TO EXTEND DRAINAGE STRUCTURES AND EXCAVATION AND EMBANKMENT SLOPES AND INCIDENTAL PURPOSES, RECORDED MAY 15, 1946 IN BOOK 2134, PAGE 123 OF OFFICIAL RECORDS.
IN FAVOR OF: COUNTY OF SAN DIEGO
- 15. AN EASEMENT FOR TRANSMISSION AND DISTRIBUTION OF ELECTRICITY AND INCIDENTAL PURPOSES, RECORDED FEBRUARY 26, 1974 AS INSTRUMENT NO. 74-047286 OF OFFICIAL RECORDS.
IN FAVOR OF: SAN DIEGO GAS & ELECTRIC COMPANY, A CORPORATION
- 16. AN EASEMENT FOR PUBLIC STREET AND INCIDENTAL PURPOSES, RECORDED JULY 20, 1977 AS INSTRUMENT NO. 77-291277 OF OFFICIAL RECORDS.
IN FAVOR OF: CITY OF SAN DIEGO

- 17. AN EASEMENT FOR PUBLIC STREET AND INCIDENTAL PURPOSES, RECORDED JULY 23, 1977 AS INSTRUMENT NO. 77-291280 OF OFFICIAL RECORDS.
IN FAVOR OF: CITY OF SAN DIEGO
- 18. AN EASEMENT FOR RIGHT OF WAY FOR PUBLIC HIGHWAY AND INCIDENTAL PURPOSES, RECORDED MAY 15, 1946 AS INSTRUMENT NO. 52025 IN BOOK 2132, PAGE 161 OF OFFICIAL RECORDS.
IN FAVOR OF: COUNTY OF SAN DIEGO
- 19. AN EASEMENT FOR EITHER OR BOTH POLE LINES, CONDUITS AND INCIDENTAL PURPOSES, RECORDED JUNE 9, 1959 AS INSTRUMENT NO. 91464 IN BOOK 7113, PAGE 587 OF OFFICIAL RECORDS.
IN FAVOR OF: PACIFIC TELEPHONE AND TELEGRAPH COMPANY
- 20. AN EASEMENT FOR TRANSMISSION AND DISTRIBUTION OF ELECTRICITY AND INCIDENTAL PURPOSES, RECORDED AUGUST 27, 1974 AS INSTRUMENT NO. 74-232850 OF OFFICIAL RECORDS.
IN FAVOR OF: SAN DIEGO GAS & ELECTRIC COMPANY, A CORPORATION
- 21. INTERNATIONALLY DELETED.
- 22. AN EASEMENT FOR RIGHT OF WAY FOR ROAD AND INCIDENTAL PURPOSES, RECORDED FEBRUARY 2, 1981 AS INSTRUMENT NO. 81-032575 OF OFFICIAL RECORDS.
IN FAVOR OF: DONALD A. HOLT
- 23. AN EASEMENT FOR RIGHT-OF-WAY FOR PUBLIC STREET, AND INGRESS AND APPURTENANCES AND INCIDENTAL PURPOSES, RECORDED MAY 5, 2000 AS INSTRUMENT NO. 2000-023447A OF OFFICIAL RECORDS.
IN FAVOR OF: CITY OF SAN DIEGO, A MUNICIPAL CORPORATION
- 24. AN EASEMENT FOR DRAINAGE FACILITIES TOGETHER WITH THE RIGHT OF INGRESS AND EGRESS AND INCIDENTAL PURPOSES, RECORDED MAY 5, 2000 AS INSTRUMENT NO. 2000-023448A OF OFFICIAL RECORDS.
IN FAVOR OF: CITY OF SAN DIEGO, A MUNICIPAL CORPORATION
- 25. AN EASEMENT FOR CONSERVATION PURPOSES AND INCIDENTAL PURPOSES, RECORDED MAY 9, 2000 AS INSTRUMENT NO. 2000-024015D OF OFFICIAL RECORDS.
IN FAVOR OF: THE UNITED STATES OF AMERICA, ACTING BY AND THROUGH THE U.S. ARMY CORPS OF ENGINEERS
- 26. AN EASEMENT FOR (1) AERIAL ELECTRIC FACILITIES, AND APPURTENANCES FOR THE TRANSMISSION AND DISTRIBUTION OF ELECTRICITY, (2) AERIAL COMMUNICATION FACILITIES, AND APPURTENANCES TOGETHER WITH THE RIGHT OF INGRESS HERETO AND EGRESS THEREFROM AND INCIDENTAL PURPOSES, RECORDED OCTOBER 20, 2006 AS INSTRUMENT NO. 2006-074819S OF OFFICIAL RECORDS.
IN FAVOR OF: SAN DIEGO GAS & ELECTRIC COMPANY, A CORPORATION
- 27. AN EASEMENT FOR MAINTENANCE OF VEGETATION AND INCIDENTAL PURPOSES, RECORDED MAY 25, 2014 AS INSTRUMENT NO. 2016-026580E OF OFFICIAL RECORDS.
IN FAVOR OF: MELVIN V. INGALLS
- 28. AN EASEMENT FOR POLES, WIRES AND ANCHORS AND INCIDENTAL PURPOSES IN THE DOCUMENT RECORDED OCTOBER 19, 1948 AS BOOK 2985, PAGE 219 OF OFFICIAL RECORDS.
THE LOCATION OF THE EASEMENT CANNOT BE DETERMINED FROM RECORD INFORMATION.
- 29. AN EASEMENT FOR PUBLIC UTILITIES, INGRESS AND EGRESS AND INCIDENTAL PURPOSES IN THE DOCUMENT RECORDED FEBRUARY 26, 1974 AS INSTRUMENT NO. 74-047286 OF OFFICIAL RECORDS.
- 30. AN EASEMENT FOR EARTH EMBANKMENT OR EXCAVATION, SLOPE OR SLOPES AND INCIDENTAL PURPOSES IN THE DOCUMENT RECORDED MAY 25, 1983 AS INSTRUMENT NO. 83-172899 OF OFFICIAL RECORDS.
- 31. AN EASEMENT FOR PUBLIC UTILITIES, INGRESS AND EGRESS AND INCIDENTAL PURPOSES IN THE DOCUMENT RECORDED OCTOBER 21, 1983 AS INSTRUMENT NO. 83-388648 OF OFFICIAL RECORDS.
BY AN ASSIGNMENT RECORDED NOVEMBER 21, 1983 AS FILE NO. 83-422308 OF OFFICIAL RECORDS, SAN DIEGO GAS AND ELECTRIC COMPANY, A CALIFORNIA CORPORATION HEREBY ASSIGNS TO THE PACIFIC TELEPHONE & TELEGRAPH COMPANY, UNDER THE TERMS AND CONDITIONS OF THAT CERTAIN AGREEMENT FOR JOINT DISTRIBUTION EASEMENTS BETWEEN SGOE AND PT&T, DATED MARCH 31, 1982, THAT CERTAIN EASEMENT.

- 32. DELETED.
- 33. AN EASEMENT FOR DRAINAGE STRUCTURES AND INCIDENTAL PURPOSES IN THE DOCUMENT RECORDED JANUARY 30, 1987 AS INSTRUMENT NO. 87-51602 OF OFFICIAL RECORDS.
- 34. AN EASEMENT FOR PUBLIC UTILITIES, INGRESS AND EGRESS AND INCIDENTAL PURPOSES IN THE DOCUMENT RECORDED MAY 02, 1989 AS INSTRUMENT NO. 89-229479 OF OFFICIAL RECORDS.
THE LOCATION OF THE EASEMENT CANNOT BE DETERMINED FROM RECORD INFORMATION.
- 35. AN EASEMENT FOR PUBLIC UTILITIES, INGRESS AND EGRESS AND INCIDENTAL PURPOSES IN THE DOCUMENT RECORDED JUNE 15, 1986 AS INSTRUMENT NO. 86-366141 OF OFFICIAL RECORDS.
- 36. AN EASEMENT FOR SLOPE, DRAINAGE, RETENTION BASIN AND TEMPORARY CONSTRUCTION AND INCIDENTAL PURPOSES, IN THE DOCUMENT RECORDED OCTOBER 01, 1986 AS INSTRUMENT NO. 86-629086 OF OFFICIAL RECORDS.
- 37. ABUTTER'S RIGHTS OF ACCESS RELINQUISHED PER DOCUMENT RECORDED MARCH 13, 1987 AS INSTRUMENT NO. 1987-011048 AND DOCUMENT RECORDED OCTOBER 01, 1989 AS INSTRUMENT NO. 89-629086, ALL OF OFFICIAL RECORDS.

STREET DEDICATION LEGEND:

- 1. POR. HERITAGE ROAD DEDICATED PER DOC. NO. 77-291278, RES. # 215575, OF O.R. RECORDED JULY 20, 1977
- 2. POR. HERITAGE ROAD DEDICATED PER MAP NO. 121445.
- 3. POR. HERITAGE ROAD DEDICATED PER DOC. NO. 1981-015888, OF O.R. RECORDED APRIL 9, 1981
- 4. POR. DAY MESA ROAD DEDICATED PER DOC. NO. 1989-040948 OF O.R. RECORDED JUNE 9, 1989; CORRECTED PER DOC. NO. 1989-076511, OF O.R. RECORDED OCTOBER 20, 1989
- 5. POR. DAY MESA ROAD DEDICATED PER DOC. NO. 83-017503, OF O.R. RECORDED MAY 28, 1983
- 6. POR. DAY MESA ROAD DEDICATED PER DOC. NO. 83-017503, OF O.R. RECORDED MAY 28, 1983
- 7. POR. DAY MESA ROAD DEDICATED PER DOC. NO. 1986-068308 OF O.R. RECORDED OCTOBER 1, 1986
- 8. POR. DAY MESA ROAD DEDICATED PER DOC. NO. 83-045395, OF O.R. RECORDED DECEMBER 16, 1983
- 9. POR. DAY MESA ROAD DEDICATED PER BOOK 251, PAGE 482, RECORDED SEPTEMBER 7, 1989
- 10. POR. DAY MESA ROAD DEDICATED PER DOC. NO. 2002-0741528 OF O.R. RECORDED AUGUST 30, 2002
- 11. POR. DAY MESA ROAD DEDICATED PER DOC. NO. 1981-015888 OF O.R. RECORDED APRIL 9, 1981
- 12. POR. DAY MESA ROAD DEDICATED PER MAP NO. 121445.
- 13. POR. DUNSMON STREET DEDICATED PER DOC. NO. 77-0291276, OF O.R. RECORDED JULY 20, 1977
- 14. POR. HERITAGE ROAD DEDICATED PER DOC. NO. 77-291277, OF O.R. RECORDED JULY 20, 1977
- 15. DAY VALLEY ROAD STREET DEDICATION PER DOC. NO. 77-291278, OF O.R. RECORDED JULY 20, 1977
- 16. DAY VALLEY ROAD DEDICATION PER DOC. NO. 77-291281, OF O.R. RECORDED SEPTEMBER 12, 1983
- 17. DAY MESA ROAD DEDICATION PER DOC. NO. 1983-302706, OF O.R. RECORDED SEPTEMBER 12, 1983
- 18. DAY MESA ROAD DEDICATION PER DOC. NO. 1988-047878, OF O.R. RECORDED JULY 31, 1988
- 19. POR. DAY VALLEY ROAD DEDICATED PER BOOK 2132, PAGE 161, REC. 5-15-1946, PER IS 1047 AND DMS. 13391-R
- 20. POR. HERITAGE ROAD DEDICATED PER DOC. NO. 1986-0149724, OF O.R. RECORDED MARCH 19, 1986

DOCUMENT NO: _____
RECORDED: _____

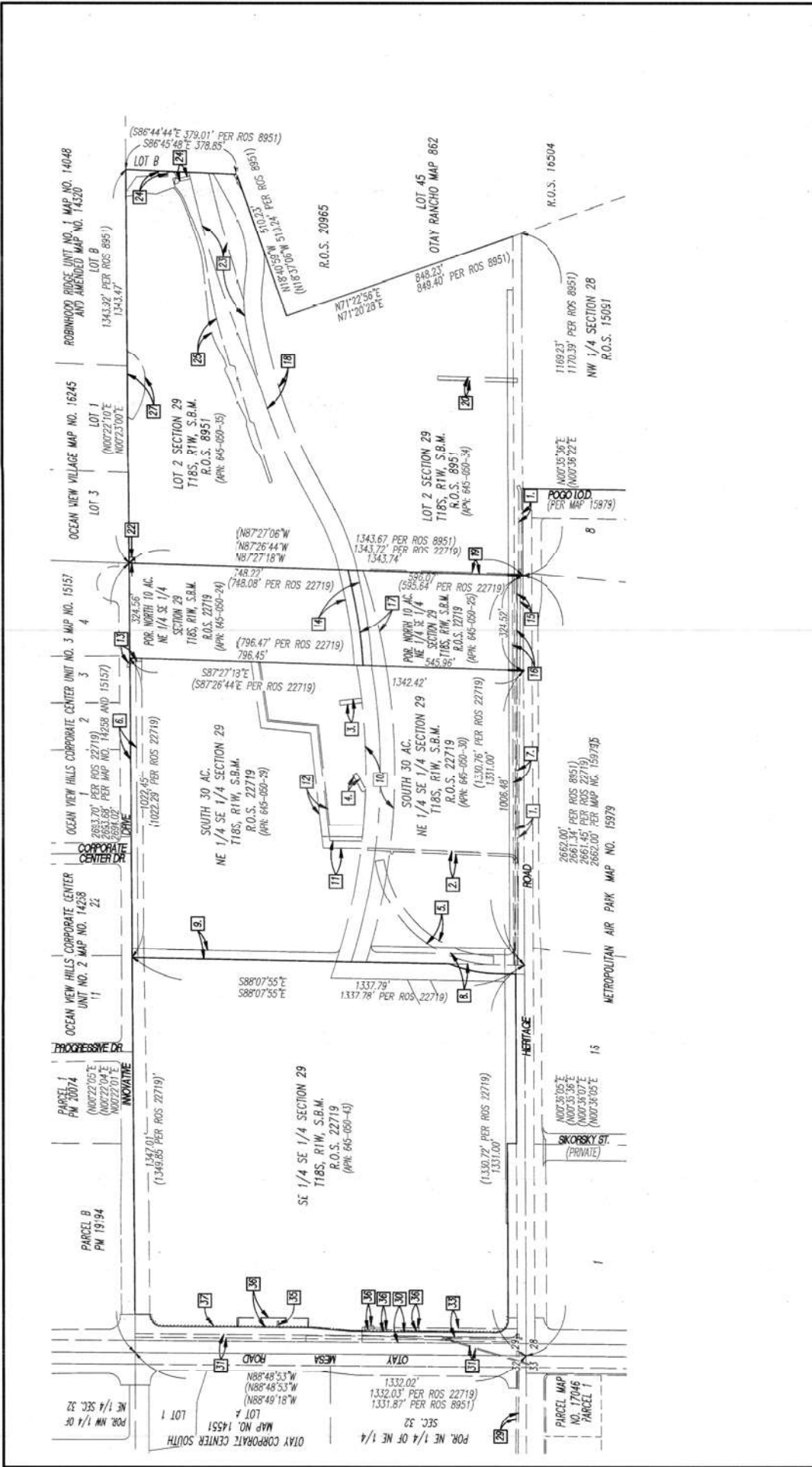
CITY OF SAN DIEGO, CALIFORNIA
SHEET 2 OF 23 SHEET

PUBLIC STREET EASEMENT AND IRREVOCABLE OFFER OF DEDICATION IN SECTION 29, TOWNSHIP 18 SOUTH, RANGE 1 WEST, SAN BERNARDINO BASE AND MERIDIAN

PTS. NO. 610624
1786-6323
CCS MAP B3 COORDINATES
146-1763
LAMBERT COORDINATES
40995-2-C

FOR CITY ENGINEER	DATE	FILED
DESCRIPTION	BY	APPROVED DATE
ORIGINAL	LEC	





DOCUMENT NO.:	
RECORDED:	
EXISTING EASEMENTS IN A POR. OF SECTION 29, TOWNSHIP 18 SOUTH, RANGE 1 WEST, SAN BERNARDINO BASE AND MERIDIAN	
CITY OF SAN DIEGO, CALIFORNIA	
SHEET 3 OF 23 SHEET	
PTS. NO.	610624
1786-6323	CCS NAD 83 COORDINATES
146-1763	LAMBERT COORDINATES
40995-3-8	

FOR LETT ENGINEER	DATE	APPROVED	DATE	FILED
DESCRIPTION	BY	DATE	DATE	DATE
ORIGINAL	LEC			

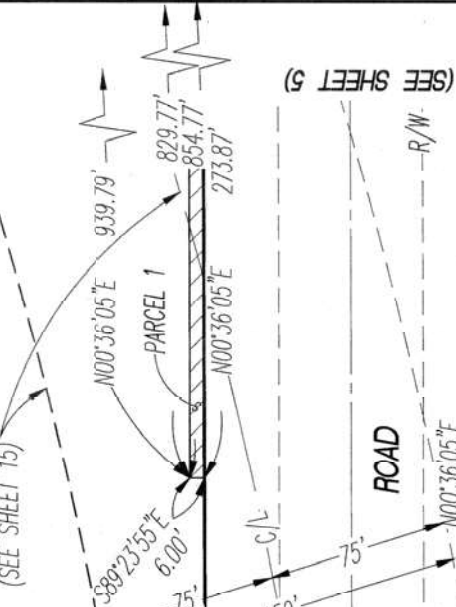
CCS 83
GRID NORTH
0°24'37.53" AT POINT "A"
GEODEIC
NORTH

SCALE: 1" = 250'

Leppert Engineering
CORPORATION
5190 Governor Drive, Suite 205, San Diego, Ca. 92122-2848
Phone: (619) 597-2001 Fax: (619) 597-2009

SE 1/4 SE 1/4 SECTION 29
 T18S, R1W, S.B.M.
 R.O.S. 22719
 (APN: 645-050-43)

I.O.D OTAY VALLEY ROAD
 (SEE SHEET 15)



(SEE SHEET 5)

HERITAGE ROAD

ROAD

SECTION CORNER
 FD. WELL MON. W/3.5"
 BRASS DISK PER ROS
 9843 AND 14492.

60' STREET OPENING AS
 SHOWN ON DWG. 27980-D 1

METROPOLITAN AIR PARK MAP NO. 15979



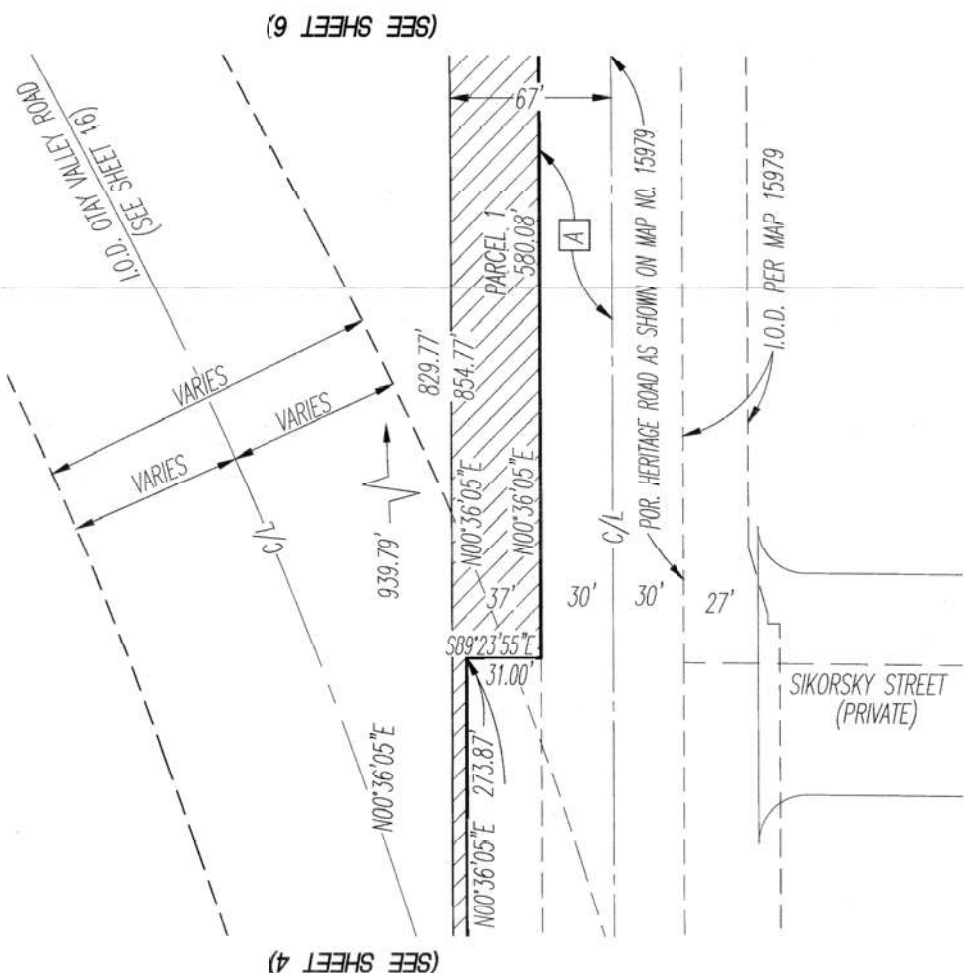
HERITAGE ROAD -- PUBLIC STREET EASEMENT
 IN SECTION 29, TOWNSHIP 18 SOUTH, RANGE 1 WEST,
 SAN BERNARDINO BASE AND MERIDIAN

CITY OF SAN DIEGO, CALIFORNIA
 SHEET 4 OF 23 SHEET

PTS. NO. 610624

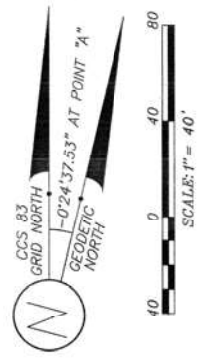
DATE	1/11/04
BY	FILED
DESCRIPTION	LEC
CCS NAD 83 COORDINATES	1786-6323
LAMBERT COORDINATES	146-1763

40995-4-C



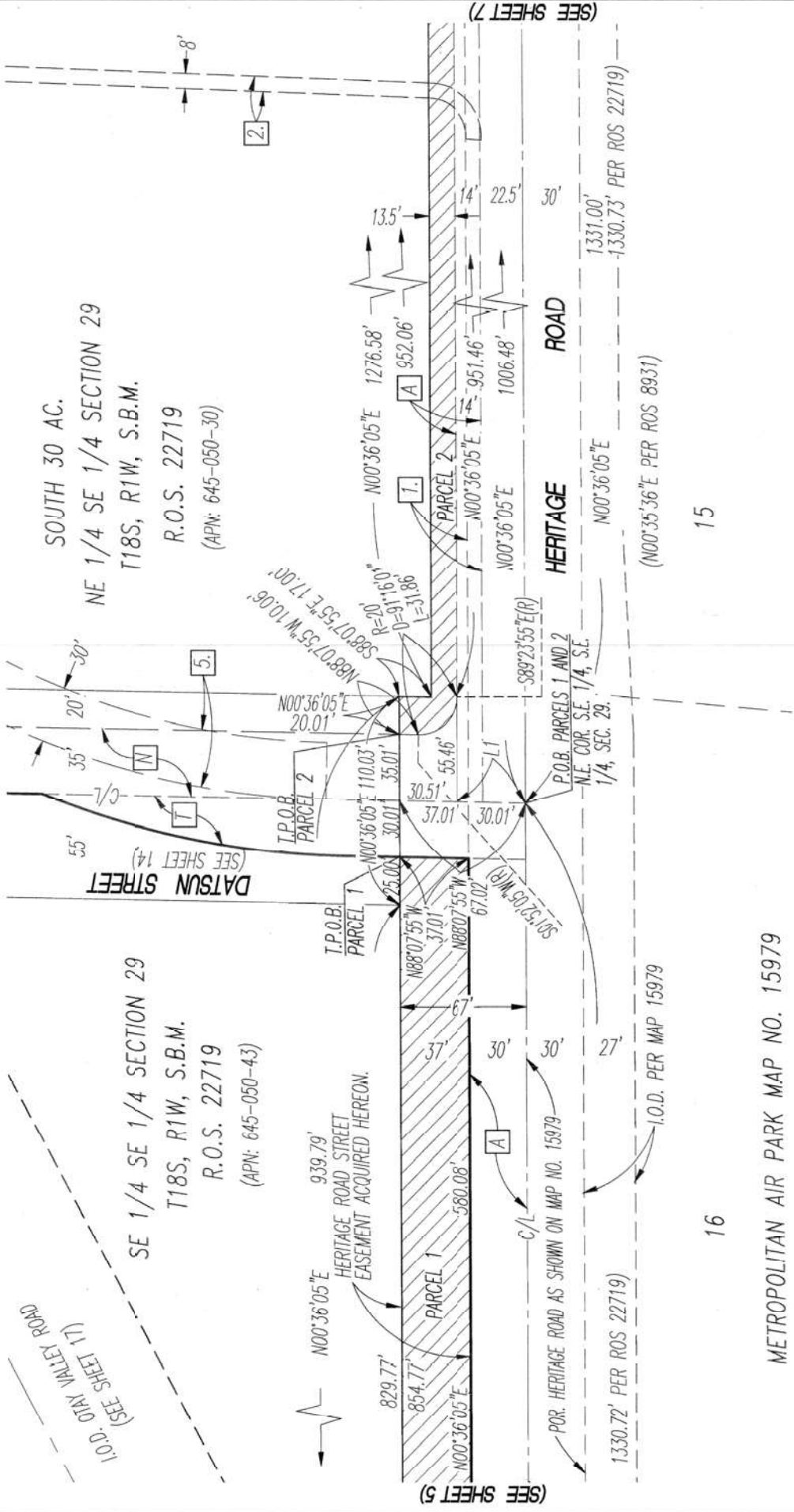
(SEE SHEET 6)

(SEE SHEET 4)



HERITAGE ROAD - PUBLIC STREET EASEMENT IN SECTION 29, TOWNSHIP 18 SOUTH, RANGE 1 WEST, SAN BERNARDINO BASE AND MERIDIAN		PTS. NO. 610624
CITY OF SAN DIEGO, CALIFORNIA SHEET 5 OF 23 SHEET		1786-6323 CCS NAD 83 COORDINATES 146-1763 LAMBERT COORDINATES
DATE	APPROVED	FILED
7/11/2011		
DESCRIPTION	BY	DATE
ORIGINAL	LEC	
		40995-5-C

LINE TABLE			
COURSE	BEARING	LENGTH	NOTES
L1	N88°07'55"W	36.51'	



HERITAGE ROAD - PUBLIC STREET EASEMENT IN SECTION 29, TOWNSHIP 18 SOUTH, RANGE 1 WEST, SAN BERNARDINO BASE AND MERIDIAN		PTS. NO. 610624
CITY OF SAN DIEGO, CALIFORNIA SHEET 6 OF 23 SHEET	1786-6323 CCS NAD 83 COORDINATES 146-1763 LAMBERT COORDINATES	40995-6-C
DATE	APPROVED	FILED
DESCRIPTION	BY	DATE
ORIGINAL	LEC	

Leppert Engineering
 CORPORATION
 5190 Governor Drive, Suite 205, San Diego, Ca. 92122-2848
 Phone: (619) 597-2001 Fax: (619) 597-2009

15

16

METROPOLITAN AIR PARK MAP NO. 15979

METROPOLITAN AIR PARK MAP NO. 15979

SOUTH 30 AC.

NE 1/4 SE 1/4 SECTION 29

T18S, R1W, S.B.M.

R.O.S. 22719

(APN: 645-050-30)

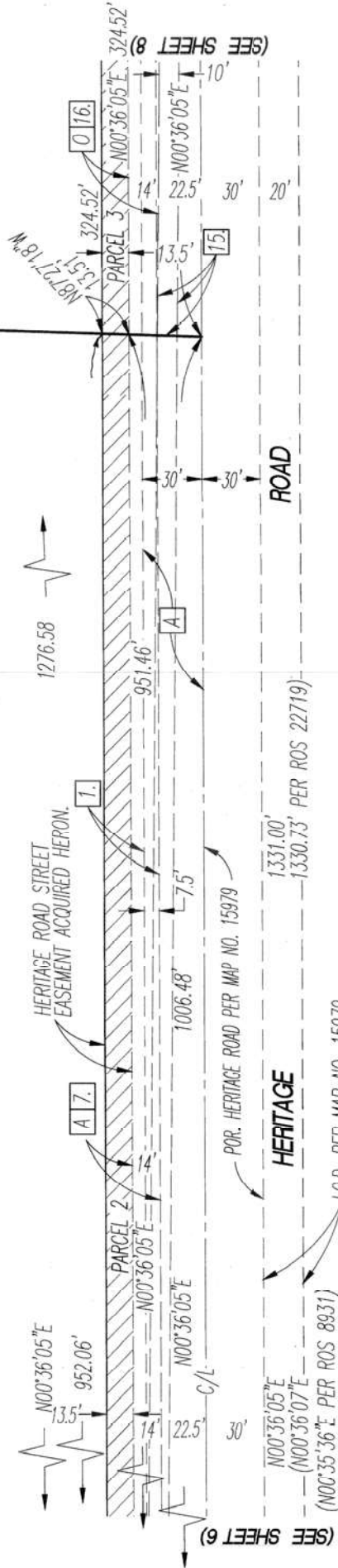
POR. NORTH 10 AC.

NE 1/4 SE 1/4 SECTION 29

T18S, R1W, S.B.M.

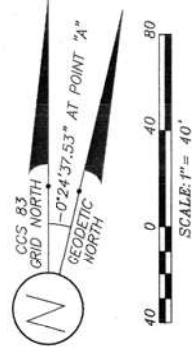
R.O.S. 22719

(APN: 645-050-25)



15

METROPOLITAN AIR PARK MAP NO. 15979



HERITAGE ROAD - PUBLIC STREET EASEMENT
IN SECTION 29, TOWNSHIP 18 SOUTH, RANGE 1 WEST,
SAN BERNARDINO BASE AND MERIDIAN

CITY OF SAN DIEGO, CALIFORNIA
SHEET 7 OF 23 SHEET

PTS. NO. 610624

1786-6323
CCS NAD 83 COORDINATES
146-1763
LAMBERT COORDINATES

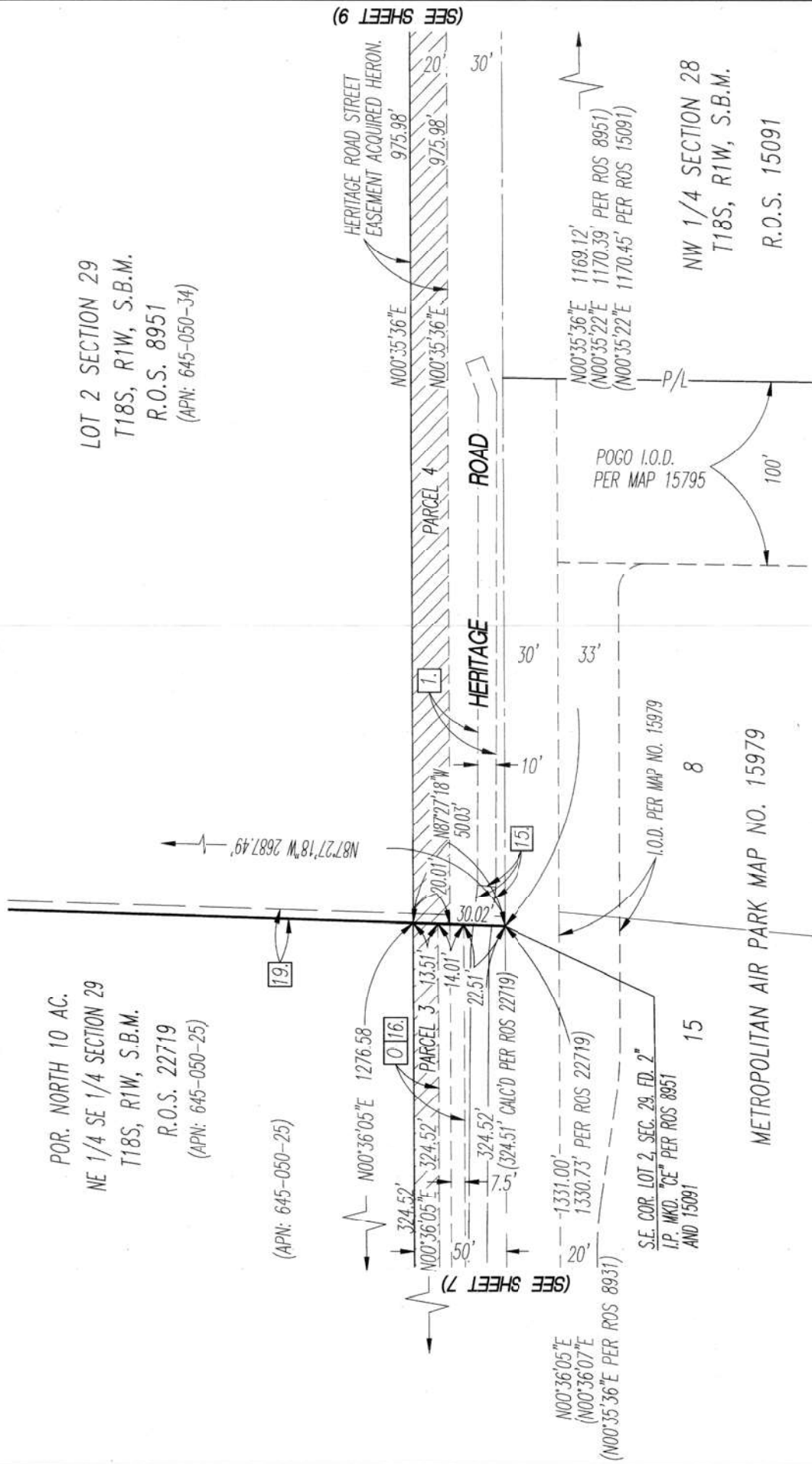
40995-7-C

Leppert Engineering

CORPORATION
5190 Governor Drive, Suite 205, San Diego, Ca. 92122-2848
Phone: (619) 597-2001 Fax: (619) 597-2009

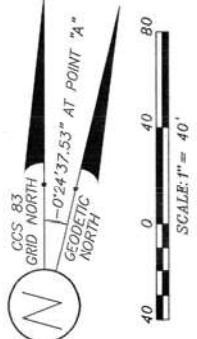
POR. NORTH 10 AC.
 NE 1/4 SE 1/4 SECTION 29
 T18S, R1W, S.B.M.
 R.O.S. 22719
 (APN: 645-050-25)

LOT 2 SECTION 29
 T18S, R1W, S.B.M.
 R.O.S. 8951
 (APN: 645-050-34)



(SEE SHEET 7)

(SEE SHEET 9)



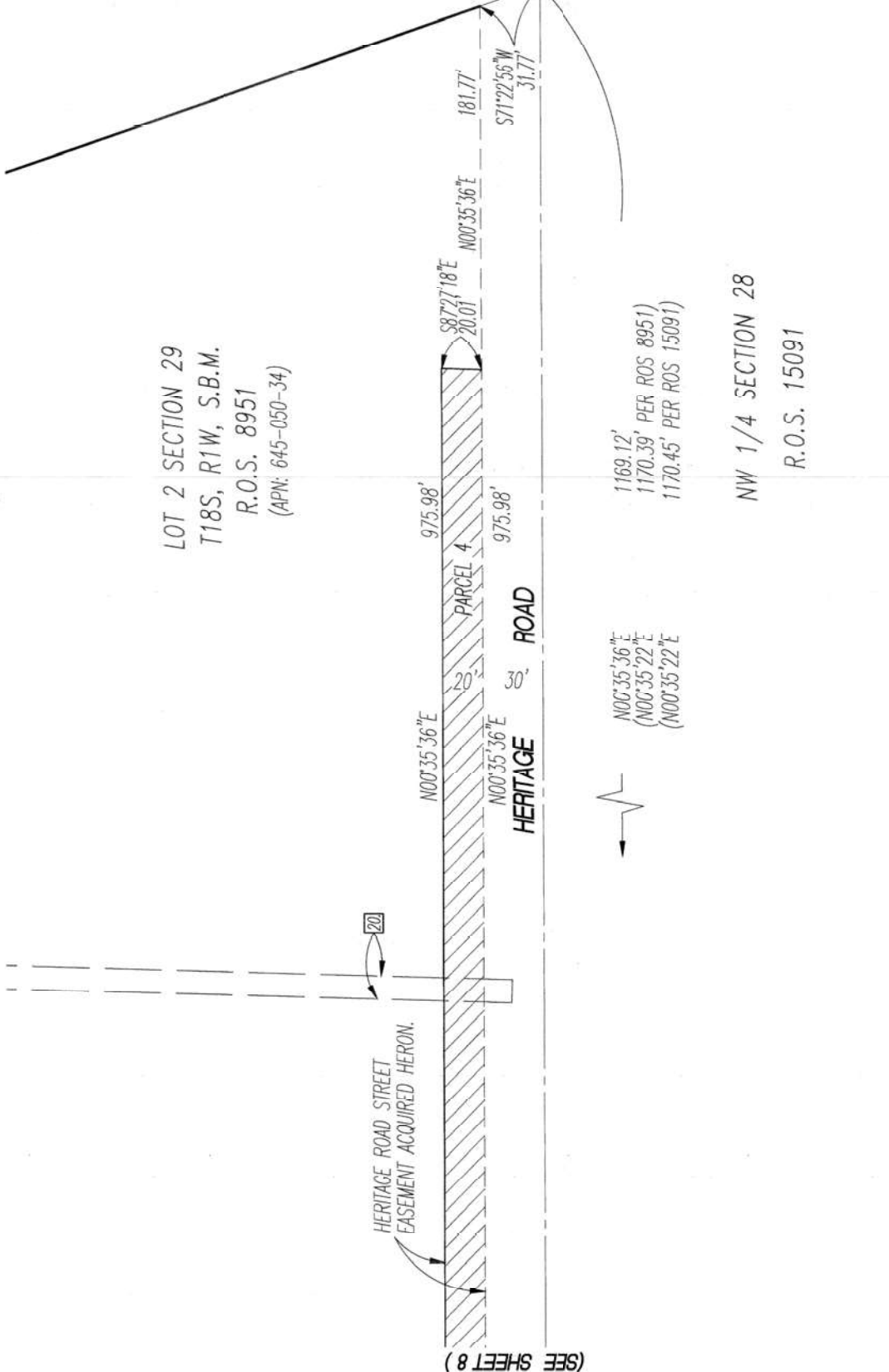
HERITAGE ROAD - PUBLIC STREET EASEMENT IN SECTION 29, TOWNSHIP 18 SOUTH, RANGE 1 WEST, SAN BERNARDINO BASE AND MERIDIAN		PTS. NO. 610624
CITY OF SAN DIEGO, CALIFORNIA	SHEET 8 OF 23 SHEET	1786-6323
FOR CITY ENGINEER	DATE	CCS NAD 83 COORDINATES
DESCRIPTION	BY	146-1763
ORIGINAL	LEC	LAMBERT COORDINATES
		40995-8-C

Leppert Engineering
 CORPORATION
 3190 Governor Drive, Suite 205, San Diego, Ca. 92122-2848
 Phone: (609) 597-2001 Fax: (609) 597-2009

LOT 2 SECTION 29
 T18S, R1W, S.B.M.
 R.O.S. 8951
 (APN: 645-050-34)

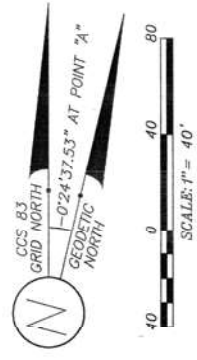
LOT 45
 OTAY RANCHO
 MAP 862

N.E. COR. LOT 2
 SEC. 29.



1169.12'
 1170.39' PER ROS 8951
 1170.45' PER ROS 15091

NW 1/4 SECTION 28
 R.O.S. 15091

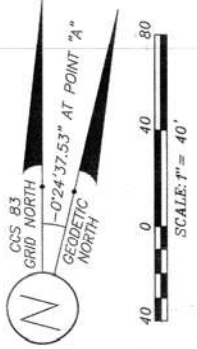
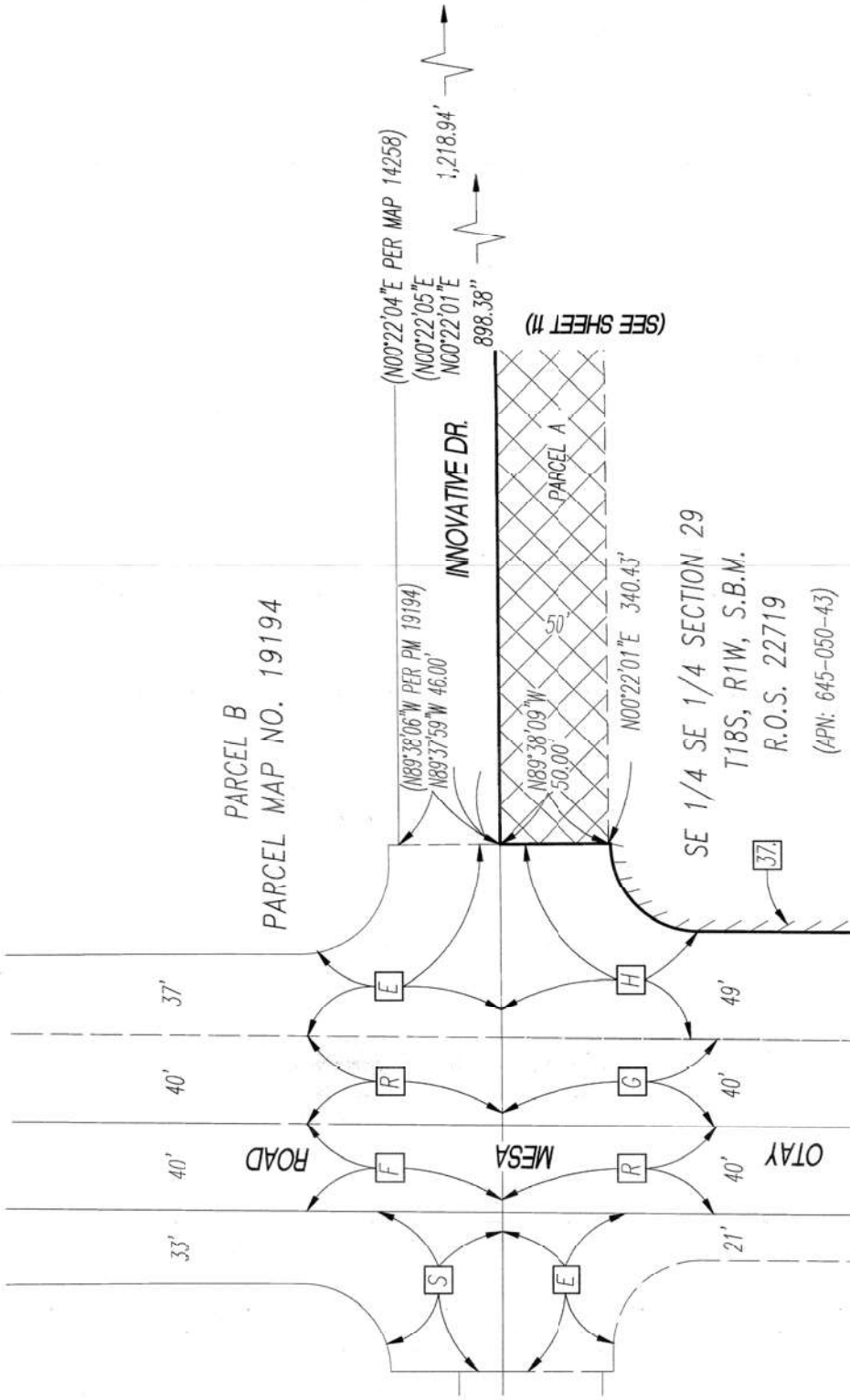


HERITAGE ROAD - PUBLIC STREET EASEMENT
 IN SECTION 29, TOWNSHIP 18 SOUTH, RANGE 1 WEST,
 SAN BERNARDINO BASE AND MERIDIAN

CITY OF SAN DIEGO, CALIFORNIA SHEET 9 OF 23 SHEET		PTS. NO. 610624
FOR CITY ENGINEER	DATE	1786-6323
DESCRIPTION	BY	CCS NAD 83 COORDINATES
ORIGINAL	LEC	146-1763
		LAMBERT COORDINATES
		40995-9-C

Leppert Engineering
 CORPORATION
 5190 Governor Drive, Suite 205, San Diego, Ca. 92122-2848
 Phone: (619) 597-2001 Fax: (619) 597-2009

(SEE SHEET 8)

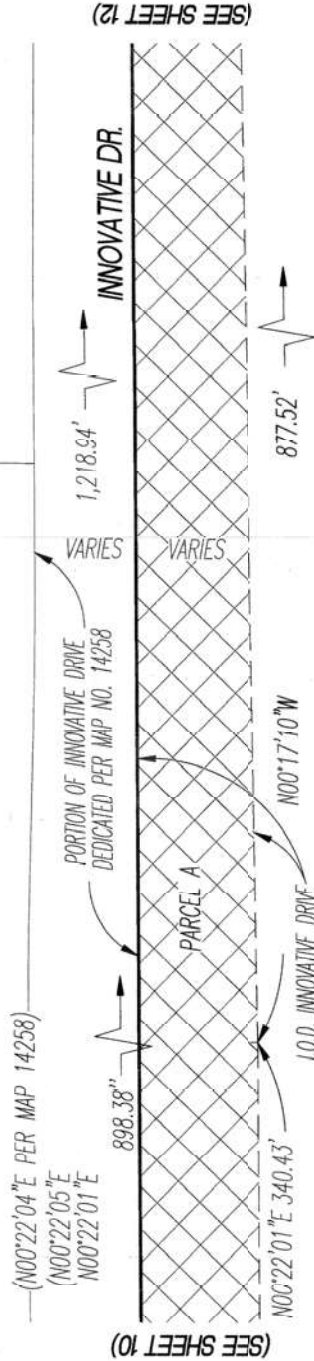


INNOVATIVE DRIVE - IRREVOCABLE OFFER OF DEDICATION
 IN SECTION 29, TOWNSHIP 18 SOUTH, RANGE 1 WEST,
 SAN BERNARDINO BASE AND MERIDIAN

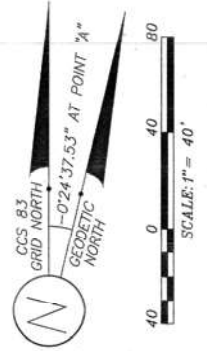
CITY OF SAN DIEGO, CALIFORNIA SHEET 10 OF 23 SHEET		PTS. NO. 610624
FOR CITY ENGINEER	DATE	1786-6323
DESCRIPTION	BY	CCS NAD 83 COORDINATES
ORIGINAL	LEC	146-1763
		LAMBERT COORDINATES
		40995-10-C

PARCEL B
PARCEL MAP NO. 19194

PARCEL 1
PARCEL MAP NO. 20074

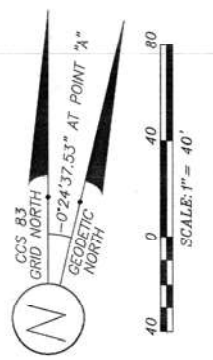
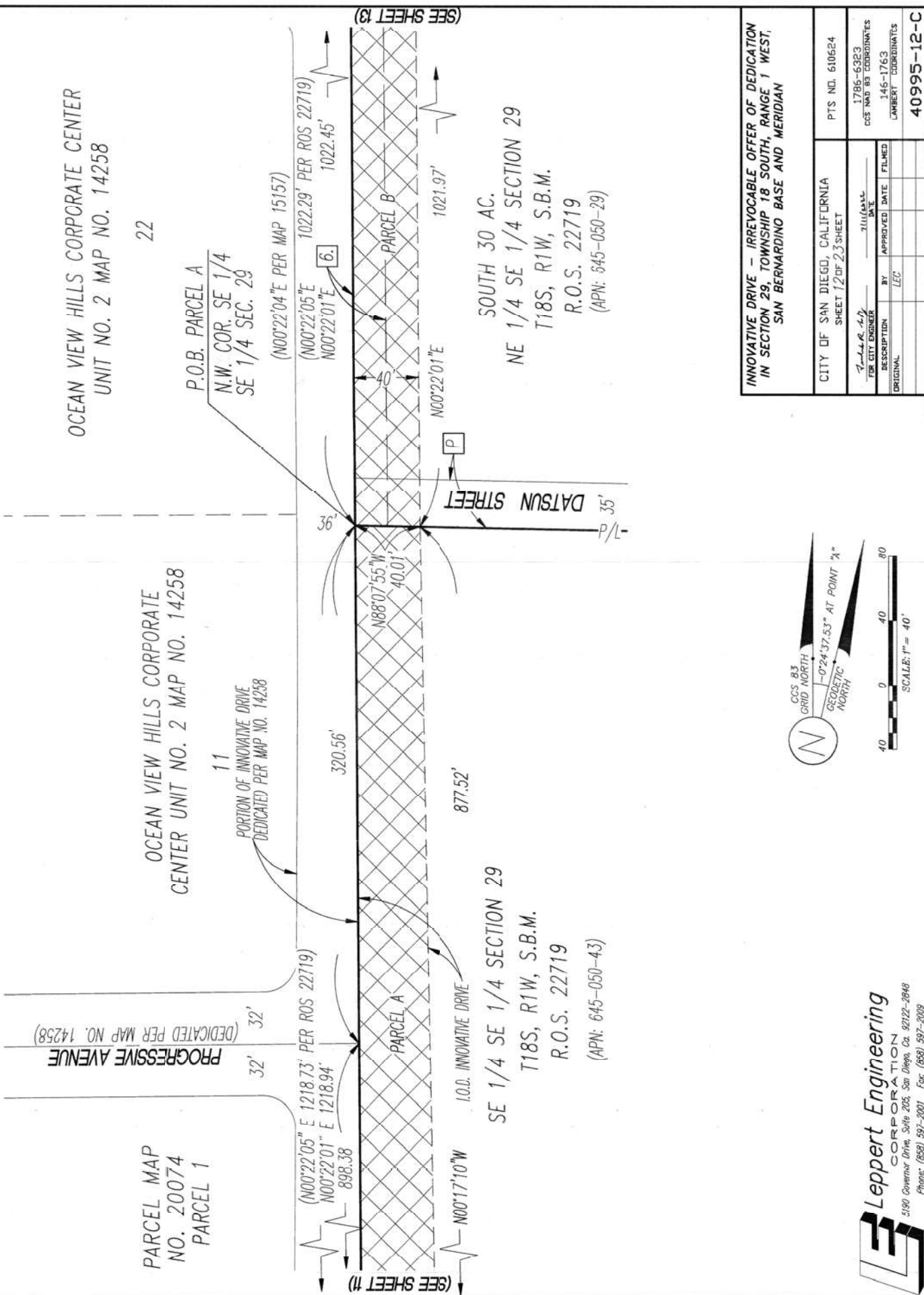


SE 1/4 SE 1/4 SECTION 29
T18S, R1W, S.B.M.
R.O.S. 22719
(APN: 645-050-43)



INNOVATIVE DRIVE - IRREVOCABLE OFFER OF DEDICATION
IN SECTION 29, TOWNSHIP 18 SOUTH, RANGE 1 WEST,
SAN BERNARDINO BASE AND MERIDIAN

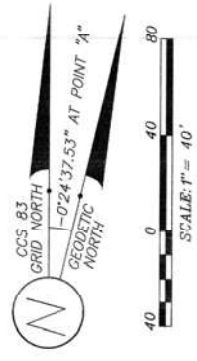
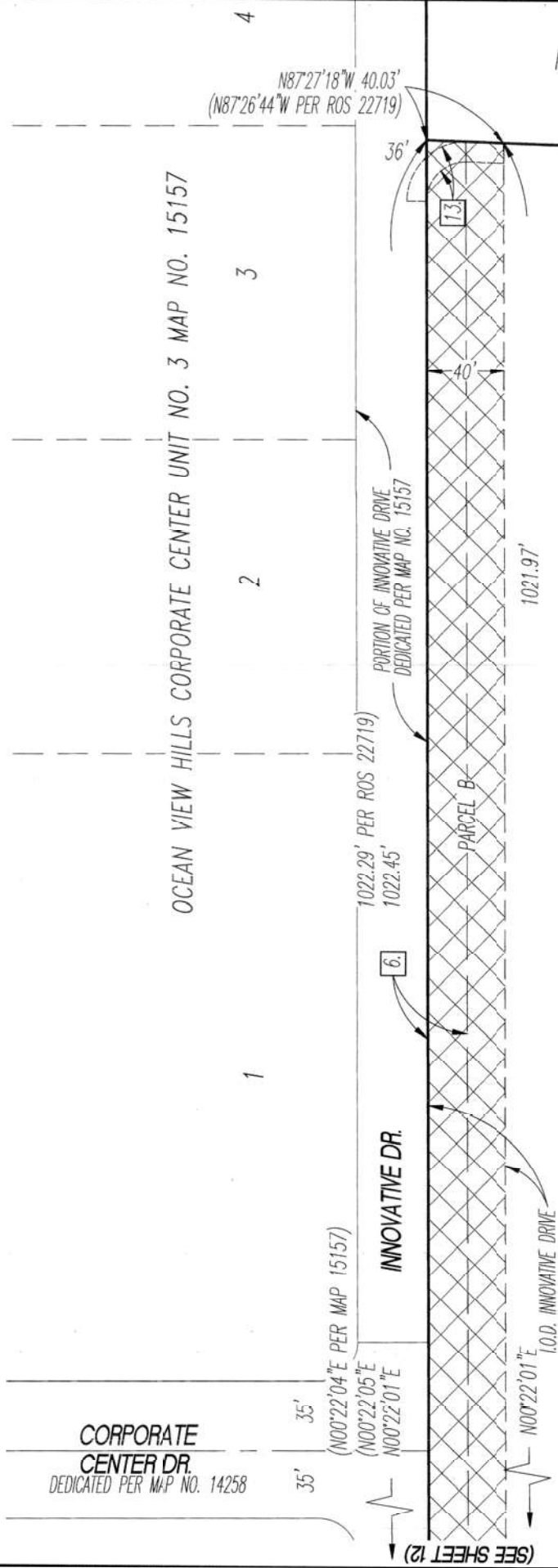
CITY OF SAN DIEGO, CALIFORNIA		PTS. NO. 610624
SHEET 11 OF 23 SHEET		1786-6323
FOR CITY ENGINEER	DATE	CCS NAD 83 COORDINATES
DESCRIPTION	BY	146-1763
ORIGINAL	LEC	LAMBERT COORDINATES
		40995-11-C



INNOVATIVE DRIVE - IRREVOCABLE OFFER OF DEDICATION IN SECTION 29, TOWNSHIP 18 SOUTH, RANGE 1 WEST, SAN BERNARDINO BASE AND MERIDIAN

CITY OF SAN DIEGO, CALIFORNIA		PTS. NO. 610624
SHEET 12 OF 23 SHEET		
FOR CITY ENGINEER	TITLE	1786-6323
BY	APPROVED DATE	CCS MAP 83 COORDINATES
ORIGINAL	LEC	146-1763
		LAMBERT COORDINATES
		40995-12-C

Leppert Engineering
 CORPORATION
 5190 Governor Drive, Suite 205, San Diego, Ca. 92122-2848
 Phone: (619) 597-2001 Fax: (619) 597-2009

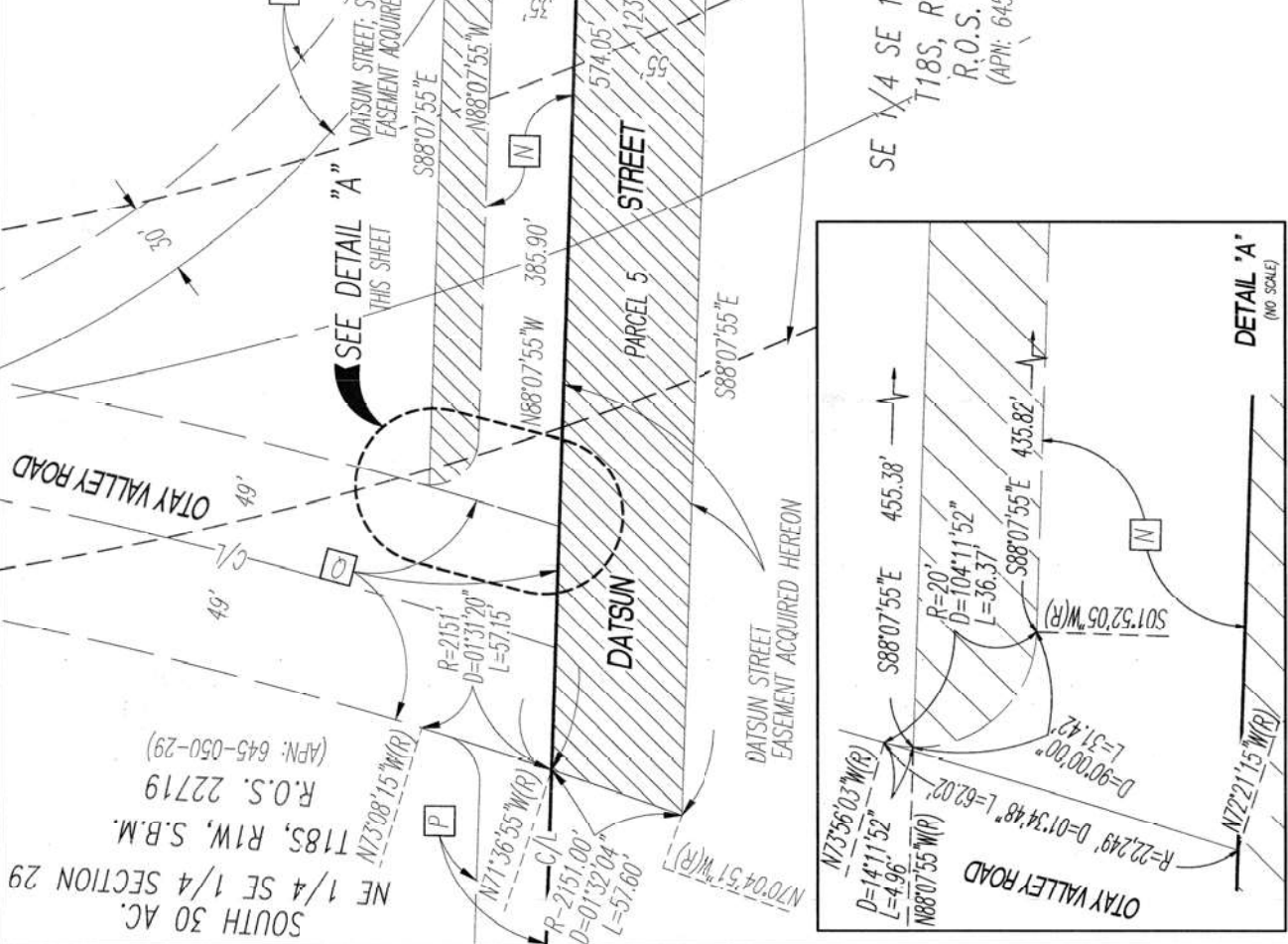


INNOVATIVE DRIVE - IRREVOCABLE OFFER OF DEDICATION
 IN SECTION 29, TOWNSHIP 18 SOUTH, RANGE 1 WEST,
 SAN BERNARDINO BASE AND MERIDIAN

CITY OF SAN DIEGO, CALIFORNIA SHEET 7.3 OF 2.3 SHEET		PTS. NO. 610624
DATE	1786-6323	CCS MAP 83 COORDINATES
BY	146-1763	LAMBERT COORDINATES
DESCRIPTION	LEC	40995-13-C
APPROVED		
FILED		

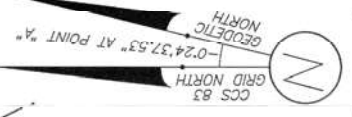
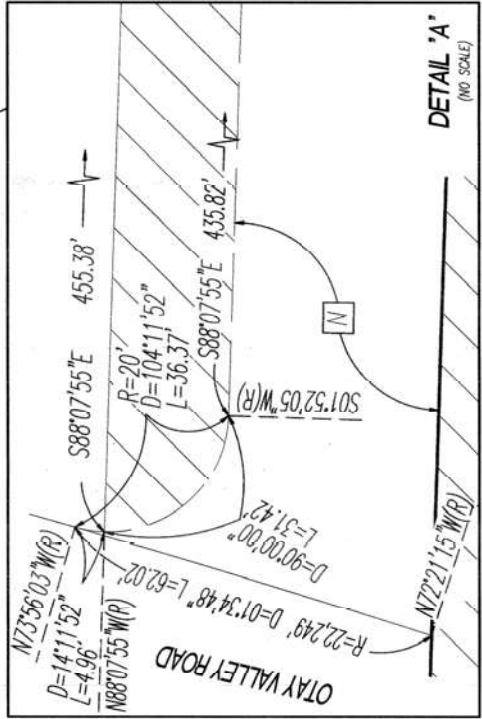
Leppert Engineering
 CORPORATION
 5180 Governor Drive, Suite 205, San Diego, Ca. 92122-2848
 Phone: (619) 597-2001 Fax: (619) 597-2009

SOUTH 30 AC.
NE 1/4 SE 1/4 SECTION 29
T18S, R1W, S.B.M.
R.O.S. 22719
(APN: 645-050-30)



SE 1/4 SE 1/4 SECTION 29
T18S, R1W, S.B.M.
R.O.S. 22719
(APN: 645-050-43)

SOUTH 30 AC.
NE 1/4 SE 1/4 SECTION 29
T18S, R1W, S.B.M.
R.O.S. 22719
(APN: 645-050-29)



DATSUM STREET - PUBLIC STREET EASEMENT IN SECTION 29, TOWNSHIP 18 SOUTH, RANGE 1 WEST, SAN BERNARDINO BASE AND MERIDIAN		PTS. NO. 610624
CITY OF SAN DIEGO, CALIFORNIA SHEET 14 OF 23 SHEET	1786-6323 CCS HAD 83 COORDINATES 146-1763 LAMBERT COORDINATES	40995-14-C
FOR GET ENGINEER DESCRIPTION BY APPROVED DATE FILMED ORIGINAL LEC	-FILED DATE	

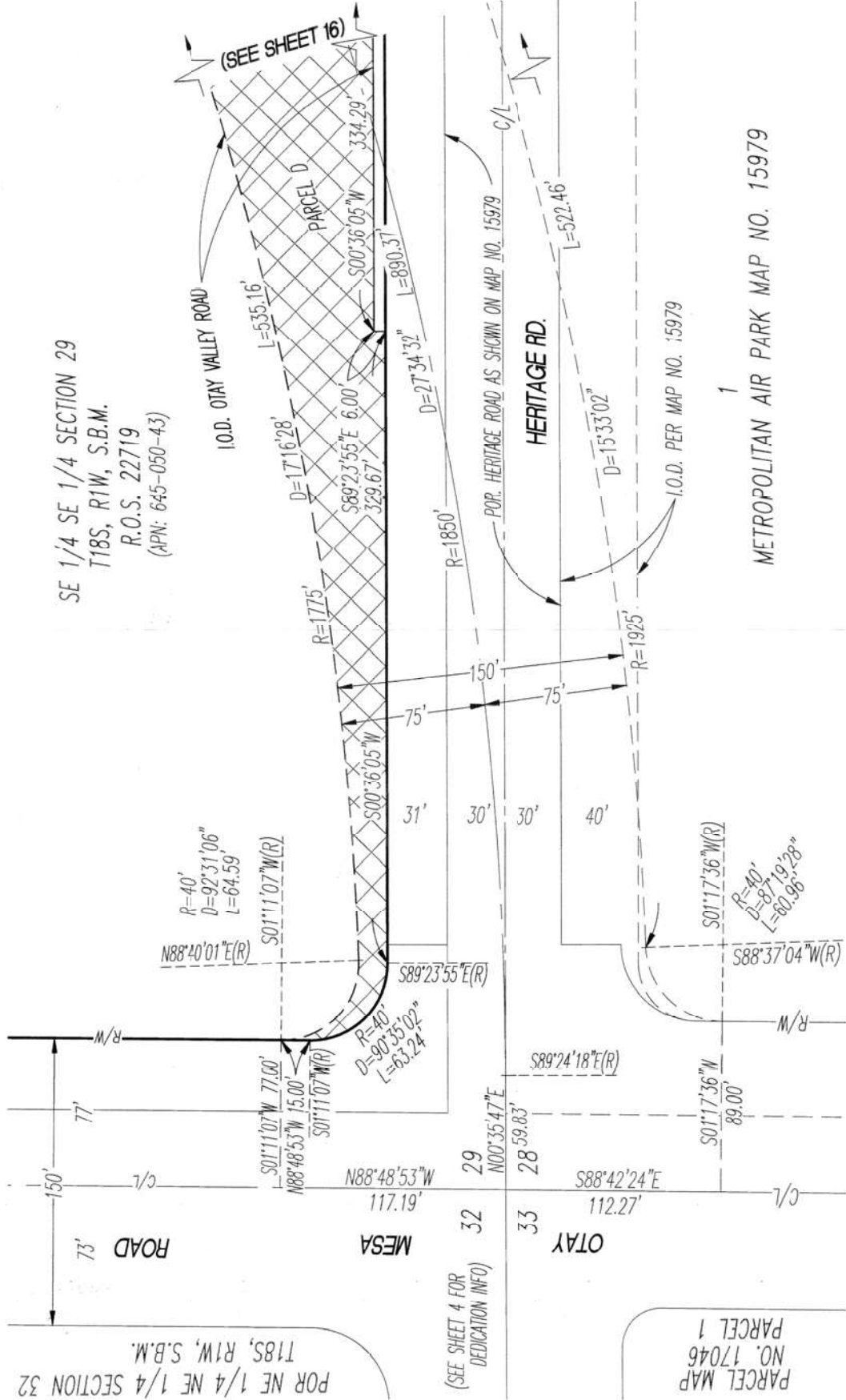
Leppert Engineering
CORPORATION

1500 Governor Drive, Suite 205, San Diego, Ca. 92122-2848
 Phone: (608) 597-2001 Fax: (608) 597-2009

15
MAP NO. 15979

16
METROPOLITAN AIR PARK
L.O.D. PER MAP NO. 15979

SE 1/4 SE 1/4 SECTION 29
 T18S, R1W, S.B.M.
 R.O.S. 22719
 (APN: 645-050-43)

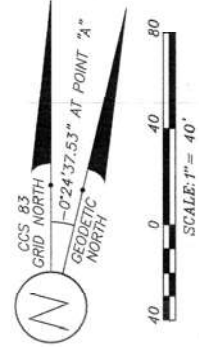


POR NE 1/4 NE 1/4 SECTION 32
 T18S, R1W, S.B.M.

(SEE SHEET 4 FOR
 DEDICATION INFO)

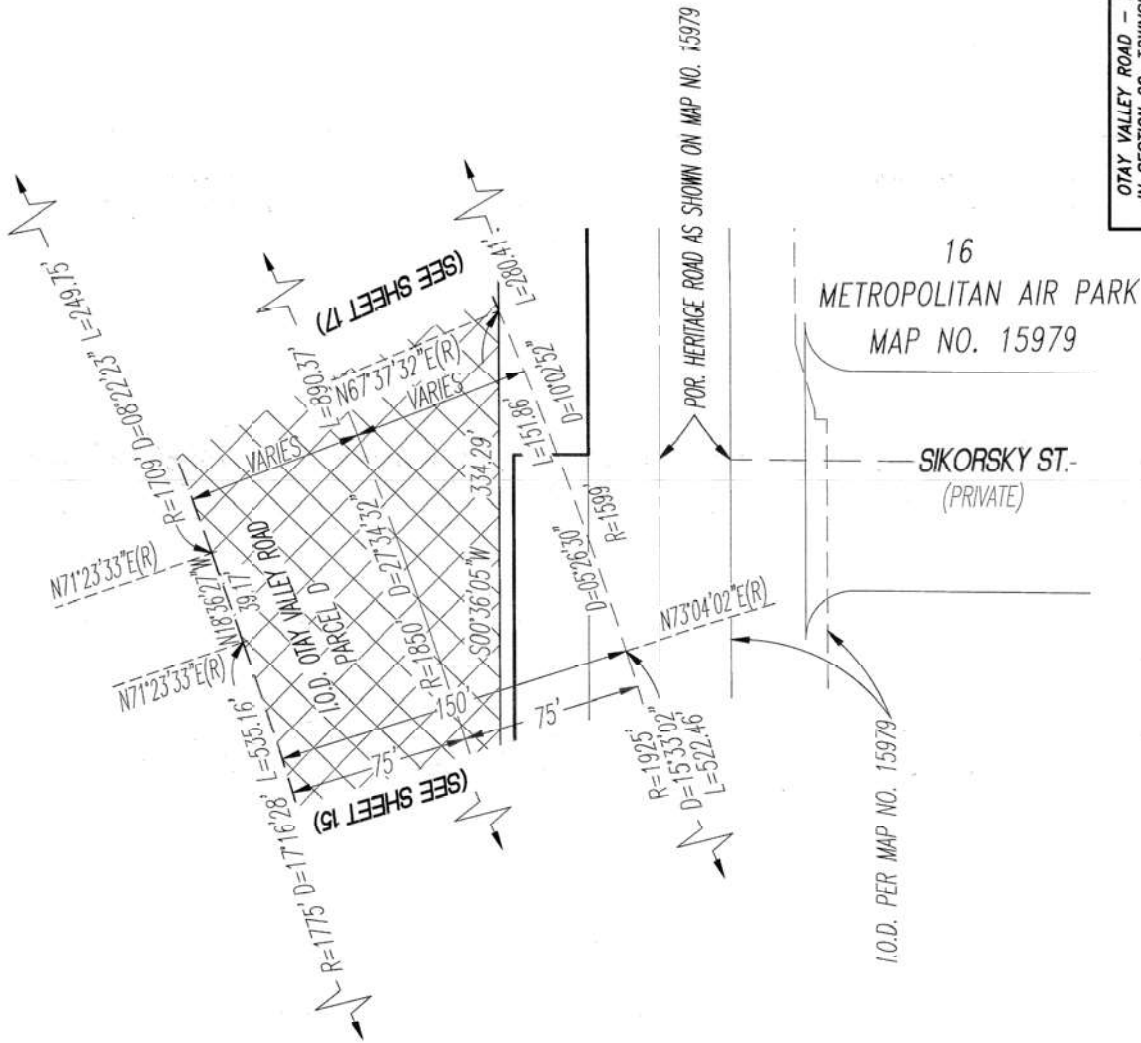
PARCEL MAP
 NO. 17046
 PARCEL 1

METROPOLITAN AIR PARK MAP NO. 15979

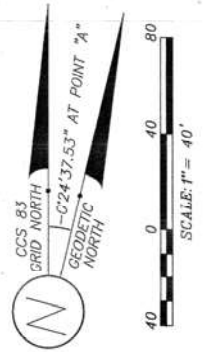


OTAY VALLEY ROAD - IRREVOCABLE OFFER OF DEDICATION
 IN SECTION 29, TOWNSHIP 18 SOUTH, RANGE 1 WEST, SAN
 BERNARDINO BASE AND MERIDIAN

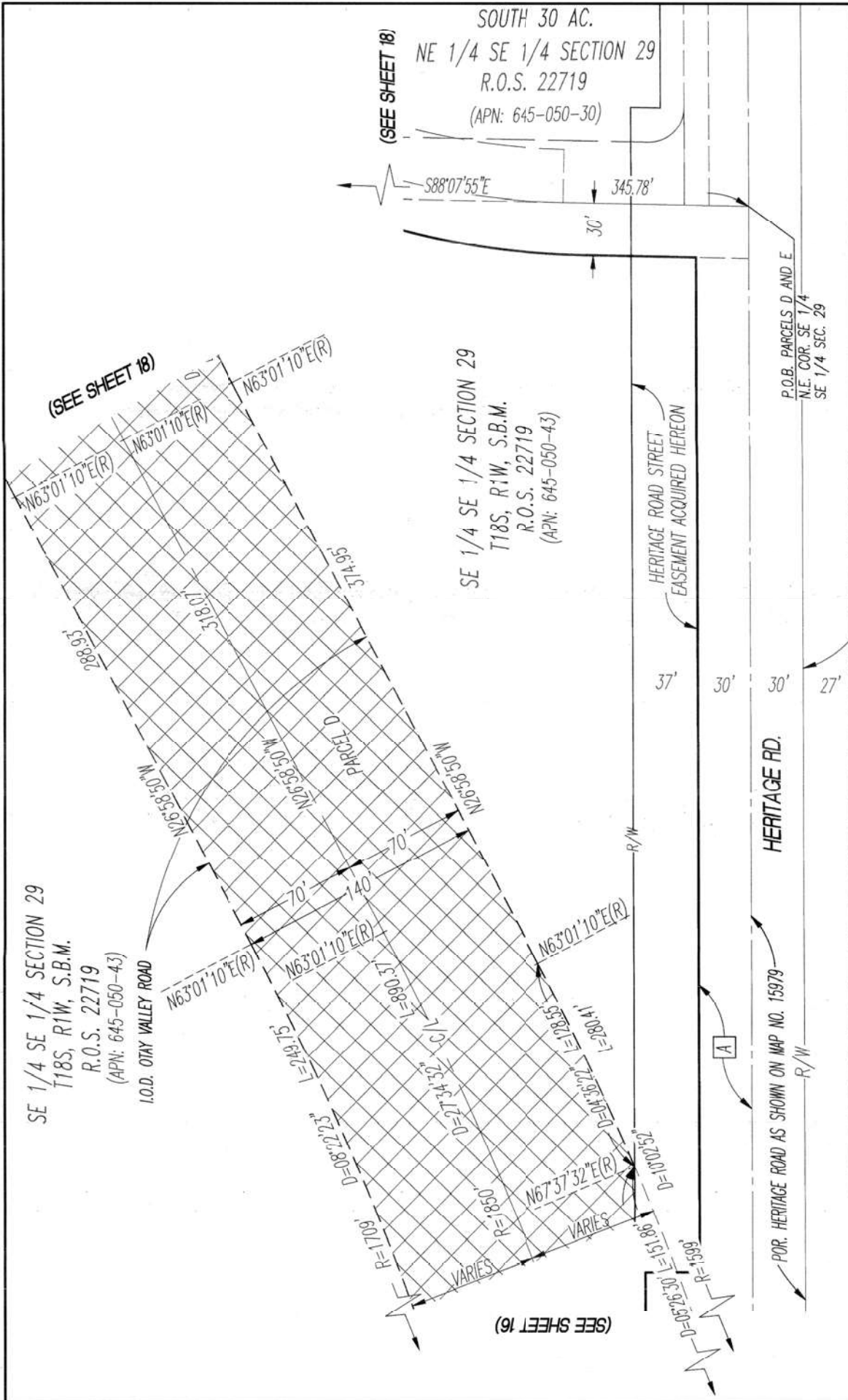
CITY OF SAN DIEGO, CALIFORNIA		PTS. NO. 610624
SHEET 15 OF 23 SHEET		
FOR CITY ENGINEER	DATE	1786-6323
DESCRIPTION	BY	CCS NAD 83 COORDINATES
ORIGINAL	APPROVED DATE	146-1763
	FILED	LAMBERT COORDINATES
	LEC	40995-15-C



OTAY VALLEY ROAD - IRREVOCABLE OFFER OF DEDICATION IN SECTION 29, TOWNSHIP 18 SOUTH, RANGE 1 WEST, SAN BERNARDINO BASE AND MERIDIAN		PTS. NO. 610624
CITY OF SAN DIEGO, CALIFORNIA SHEET 16 OF 23 SHEET	DATE	1786-6323 CCS NAD 83 COORDINATES 146-1763 LAMBERT COORDINATES
BY: <i>J. A. Ay</i>	APPROVED: _____	
DESCRIPTION	DATE	
ORIGINAL	FILED	
	LEC	
		40995-16-C



Leppert Engineering
CORPORATION
5190 Governor Drive, Suite 205, San Diego, Ca. 92122-2848
Phone: (608) 597-2001 Fax: (608) 597-2009



OTAY VALLEY ROAD - IRREVOCABLE OFFER OF DEDICATION IN SECTION 29, TOWNSHIP 18 SOUTH, RANGE 1 WEST, SAN BERNARDINO BASE AND MERIDIAN	
CITY OF SAN DIEGO, CALIFORNIA SHEET 17 OF 23 SHEET	PTS. NO. 610624 1786-6923 CCS NAD 83 COORDINATES 146-1763 LAMBERT COORDINATES
FOR CITY ENGINEER: <i>[Signature]</i> DATE: _____ BY: _____ DATE: _____ ORIGINAL LEC	APPROVED DATE: _____ FILED DATE: _____ LEC

METROPOLITAN AIR PARK MAP NO. 15979
 16
 HERITAGE RD. AS SHOWN ON MAP NO. 15979
 HERITAGE ROAD STREET EASEMENT ACQUIRED HEREON
 P.O.B. PARCELS D AND E
 N.E. COR. SE 1/4
 SE 1/4 SEC. 29

I.O.D. PER MAP 15979
 10.0 PER MAP 15979

CCS 83 GRID NORTH
 GEODETIC NORTH
 -024°37.53' AT POINT 'A'

SCALE: 1" = 40'
 0 40 80

SIKORSKY ST. (PRIVATE)
Leppert Engineering
 CORPORATION
 5190 Governor Drive, Suite 205, San Diego, Ca. 92122-2848
 Phone: (619) 597-2001 Fax: (619) 597-2009

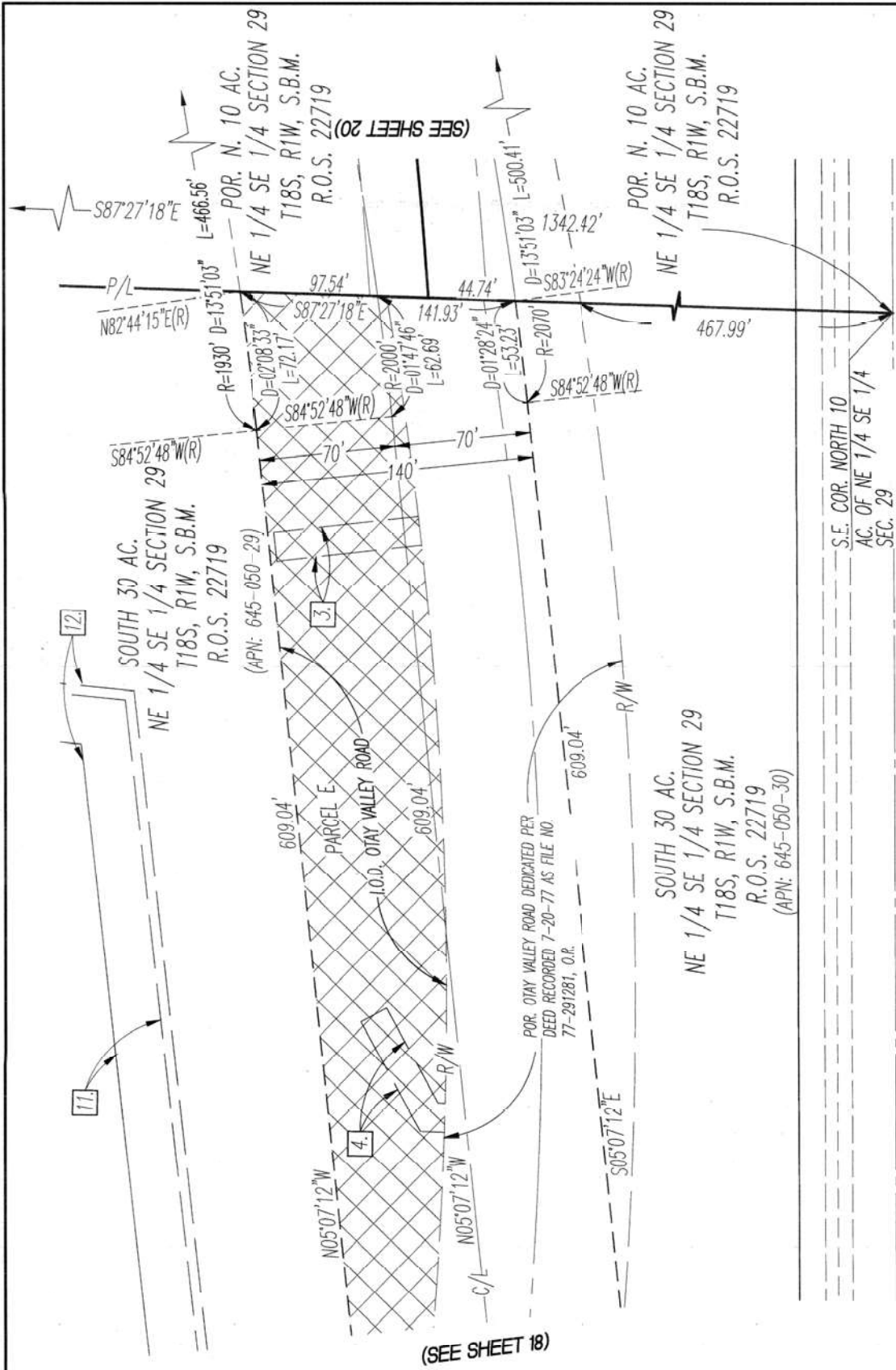
SOUTH 30 AC.
 NE 1/4 SE 1/4 SECTION 29
 R.O.S. 22719
 (APN: 645-050-30)

SE 1/4 SE 1/4 SECTION 29
 T18S, R1W, S.B.M.
 R.O.S. 22719
 (APN: 645-050-43)

SE 1/4 SE 1/4 SECTION 29
 T18S, R1W, S.B.M.
 R.O.S. 22719
 (APN: 645-050-43)
 I.O.D. OTAY VALLEY ROAD

(SEE SHEET 18)

(SEE SHEET 16)



OTAY VALLEY ROAD - IRREVOCABLE OFFER OF DEDICATION IN SECTION 29, TOWNSHIP 18 SOUTH, RANGE 1 WEST, SAN BERNARDINO BASE AND MERIDIAN	
CITY OF SAN DIEGO, CALIFORNIA SHEET 19 OF 23 SHEET	PTS. NO. 610624 1786-6323 CCS NAD 83 COORDINATES 146-1763 LAMBERT COORDINATES
FOR CITY ENGINEER DESCRIPTION: BY L.L.R. 4/2	APPROVED DATE: 7/10/01 FILMED DATE:
ORIGINAL	LEC:

HERITAGE ROAD (AS SHOWN ON MAP NO. 15979)
 S.E. COR. NORTH 10 AC. OF NE 1/4 SE 1/4 SEC. 29

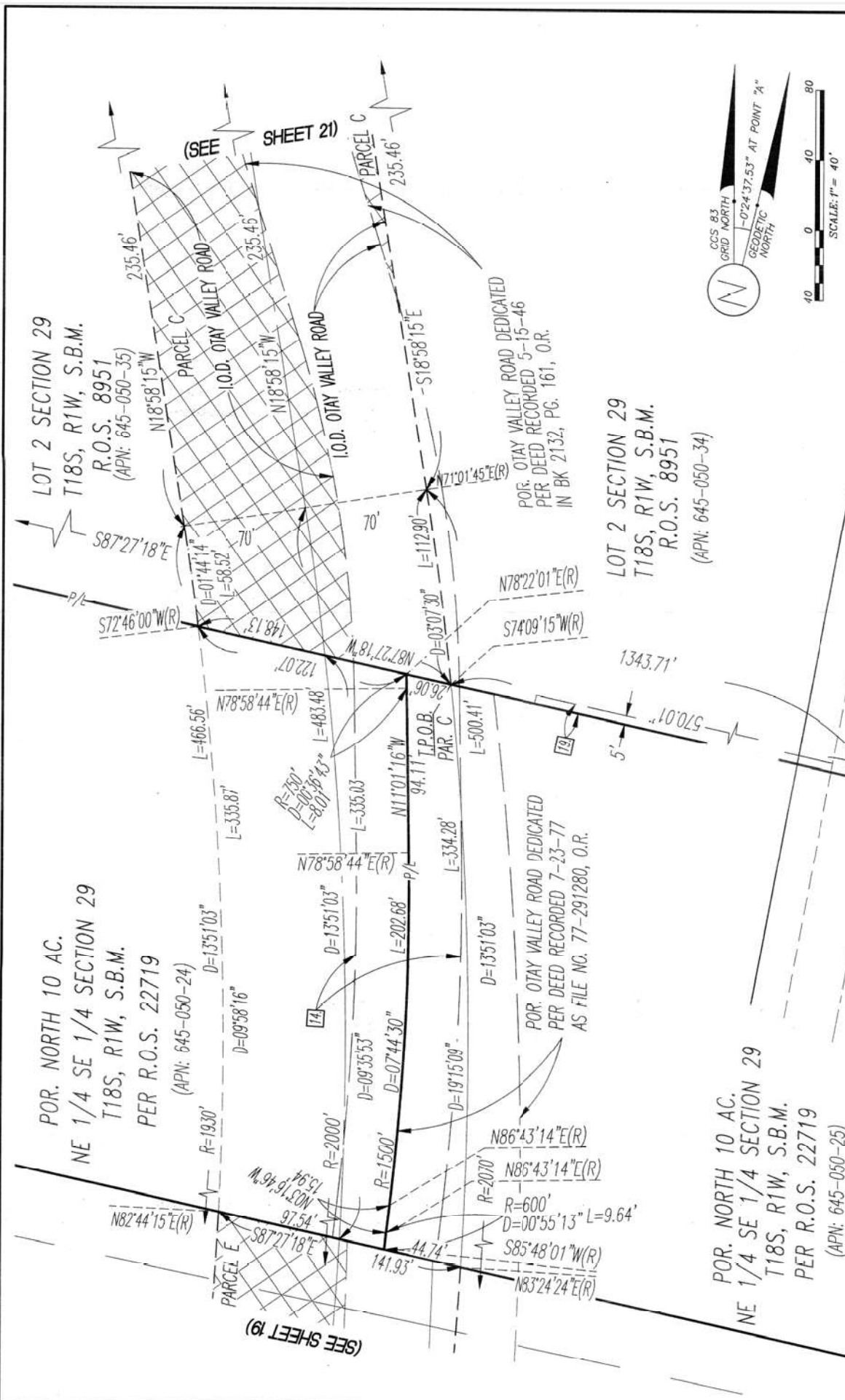
CCS 83 GRID NORTH

GEOMETRIC NORTH

-0°24'37.53" AT POINT "A"

(SEE SHEET 18)

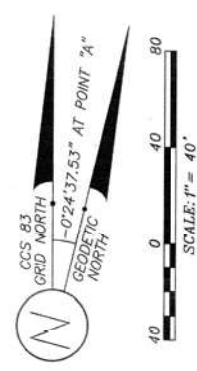
(SEE SHEET 20)



CITY OF SAN DIEGO, CALIFORNIA SHEET 20 OF 23 SHEET		PTS. NO. 610624
FOR CITY ENGINEER	DATE	1786-6323 CGS NAD 83 COORDINATES
BY	APPROVED	146-1763 LAMBERT COORDINATES
DESCRIPTION	DATE	
ORIGINAL	FILED	
LEC		
		40995-20-C

OTAY VALLEY ROAD - IRREVOCABLE OFFER OF DEDICATION
IN SECTION 29, TOWNSHIP 18 SOUTH, RANGE 1 WEST, SAN
BERNARDINO BASE AND MERIDIAN

HERITAGE ROAD (AS SHOWN ON MAP NO. 15979)
METROPOLITAN AIR PARK MAP NO. 15979
LOT 8
LOT 15



LOT 2 SECTION 29
T18S, R1W, S.B.M.
R.O.S. 8951
(APN: 645-050-35)

LOT 2 SECTION 29
T18S, R1W, S.B.M.
R.O.S. 8951
(APN: 645-050-34)

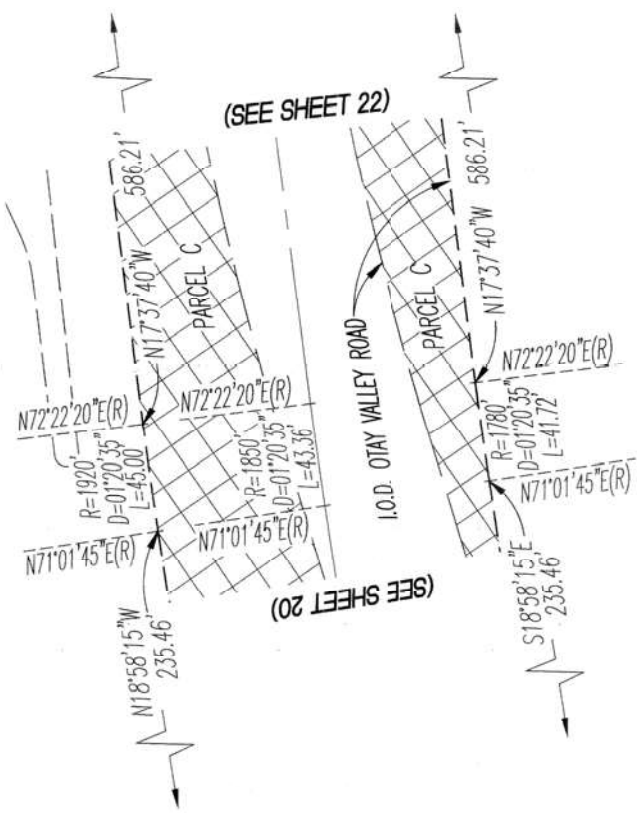
POR. NORTH 10 AC.
NE 1/4 SE 1/4 SECTION 29
T18S, R1W, S.B.M.
PER R.O.S. 22719
(APN: 645-050-24)

POR. NORTH 10 AC.
NE 1/4 SE 1/4 SECTION 29
T18S, R1W, S.B.M.
PER R.O.S. 22719
(APN: 645-050-25)

POR. OTAY VALLEY ROAD DEDICATED
PER DEED RECORDED 5-15-46
IN BK 2132, PG. 161, O.R.

POR. OTAY VALLEY ROAD DEDICATED
PER DEED RECORDED 7-23-77
AS FILE NO. 77-291280, O.R.

LOT 2 SECTION 29
 T18S, R1W, S.B.M.
 R.O.S. 8951
 (APN: 645-050-35)



LOT 2 SECTION 29
 T18S, R1W, S.B.M.
 R.O.S. 8951
 (APN: 645-050-34)

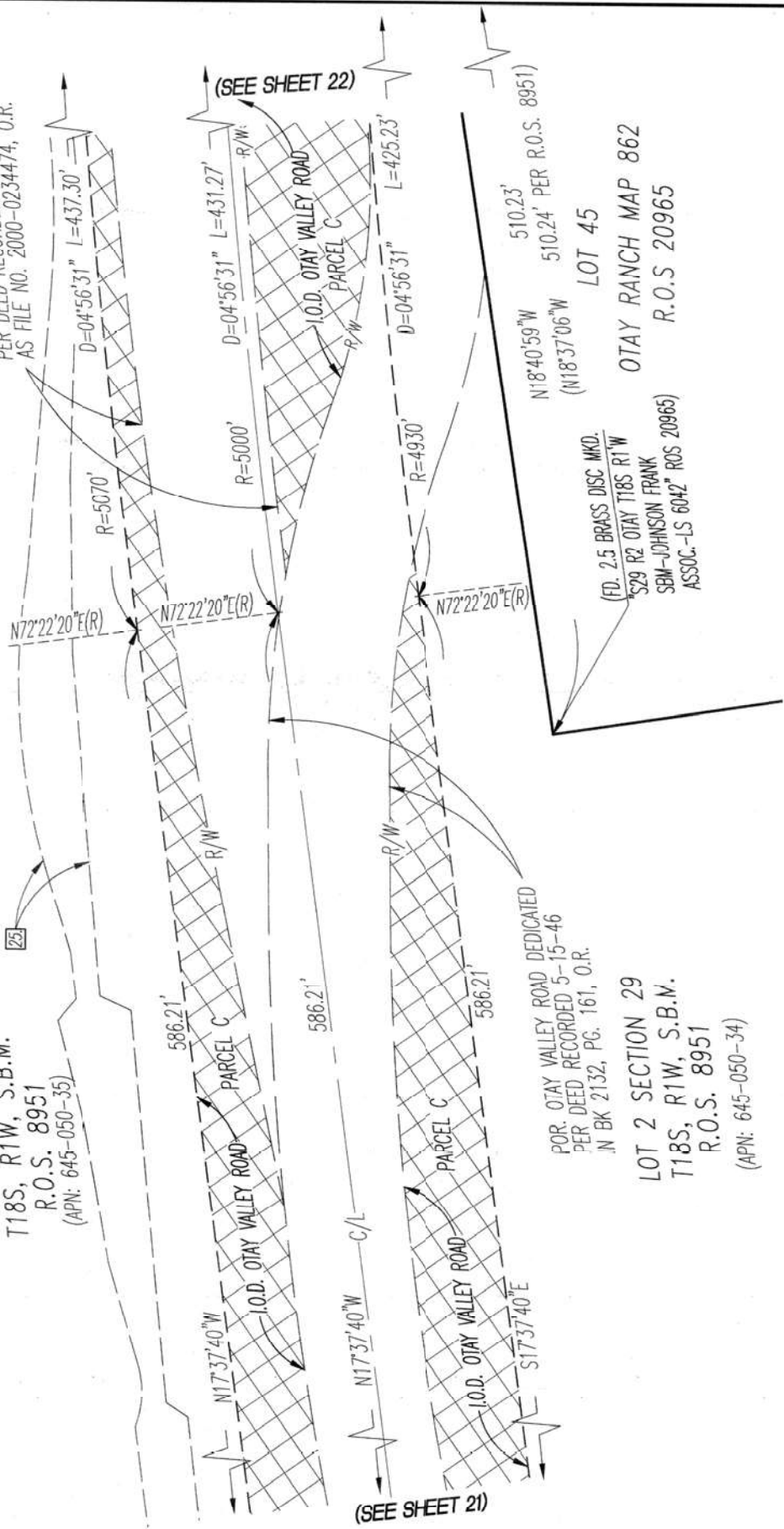


Leppert Engineering
 CORPORATION
 5190 Governor Drive, Suite 205, San Diego, Ca. 92122-2848
 Phone: (619) 597-2001 Fax: (619) 597-2009

OTAY VALLEY ROAD - IRREVOCABLE OFFER OF DEDICATION IN SECTION 29, TOWNSHIP 18 SOUTH, RANGE 1 WEST, SAN BERNARDINO BASE AND MERIDIAN		PTS. NO. 610624	
CITY OF SAN DIEGO, CALIFORNIA SHEET 27 OF 23 SHEET		1786-6323 CCS NAD 83 COORDINATES 146-1763 LAMBERT COORDINATES	
BY DESCRIPTION ORIGINAL	BY LEC	DATE APPROVED DATE	DATE FILMED DATE

LOT 2 SECTION 29
 T18S, R1W, S.B.M.
 R.O.S. 8951
 (APN: 645-050-35)

POR. OTAY VALLEY ROAD DEDICATED
 PER DEED RECORDED 5-5-2000
 AS FILE NO. 2000-0234474, O.R.



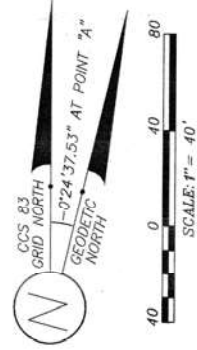
POR. OTAY VALLEY ROAD DEDICATED
 PER DEED RECORDED 5-15-46
 IN BK 2132, PG. 161, O.R.

LOT 2 SECTION 29
 T18S, R1W, S.B.M.
 R.O.S. 8951
 (APN: 645-050-34)

N18°40'59\"/>

LOT 45
 OTAY RANCH MAP 862
 R.O.S. 20965

(FD. 2.5 BRASS DISC MKD.
 S29 R2 OTAY T18S R1W
 SBM-JOHNSON FRANK
 ASSOC.-LS 6042 ROS 20965)



OTAY VALLEY ROAD - IRREVOCABLE OFFER OF DEDICATION
 IN SECTION 29, TOWNSHIP 18 SOUTH, RANGE 1 WEST, SAN
 BERNARDINO BASE AND MERIDIAN

CITY OF SAN DIEGO, CALIFORNIA SHEET 22 OF 23 SHEET		PTS. NO. 610624
FOR CITY ENGINEER	DATE	1786-6323
DESCRIPTION	APPROVED DATE	CCS 'MAD '83 COORDINATES
ORIGINAL	LEC	1416-1763
		LAMBERT COORDINATES
		40995-22-C

Leppert Engineering
 CORPORATION
 5190 Governor Drive, Suite 205, San Diego, Ca. 92122-2848
 Phone: (619) 597-2001 Fax: (619) 597-2009

