

DATA TABLE			
NO.	BEARING	DIST.	COMMENTS
1	N47°01'13"W	3.72'	(N46°52'27"W, 3.76' PER MAP 14258)
2	N86°45'48"W	378.85'	(N86°44'44"W, 379.01' PER ROS 8951)

REFERENCES:
 RECORD OF SURVEY 8951; RECORD OF SURVEY 1591; RECORD OF SURVEY 22719
 PARCEL MAP NO. 19194; PARCEL MAP NO. 17046; PARCEL MAP NO. 20074
 ROBINHOOD RIDGE MAP NO. 14048; OCEANVIEW HILLS CORPORATE CENTER UNIT NO. 2
 MAP NO. 14258; OCEANVIEW HILLS CORPORATE CENTER UNIT NO. 3 MAP NO. 15157;
 METROPOLITAN AIR PARK MAP NO. 15979; OCEAN VIEW HILLS MAP NO. 16245.

ASSESSOR'S PARCEL NUMBER:
 646-050-25; 646-050-29 AND 30; 646-050-34 AND 35;

BASIS OF BEARINGS:
 THE BASIS OF BEARINGS FOR THIS DRAWING IS THE CALIFORNIA COORDINATE SYSTEM, CROSS ZONE 6, EPOCH 1993.5. TRANSFORMED MERIDIAN DISTANCES TO POINTS "A" AND "B" ARE SHOWN HEREON. THE CROSS COORDINATES OF POINTS "A" AND "B" ARE ESTABLISHED FROM C.P.S. STATION 209 AND C.P.S. STATION 189 PER RECORD OF SURVEY NO. 14492. THE BEARING FROM POINT "A" TO POINT "B" IS N00°36'05"E.

DOTTED BEARINGS AND DISTANCES FROM REFERENCE LINES OR DEEDS MAY OR MAY NOT BE IN TERMS OF SAID SYSTEM.

THE CORNERED GRID FACTOR AT STATION 189 IS 1.0000229. GRID DISTANCE = GRID DISTANCE X CORNERED GRID FACTOR. ELEVATION AT POINT "A" IS 5045.7' MSL. (NSAD 29)

LEGEND

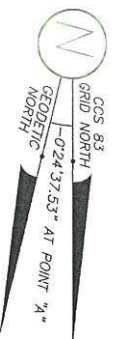
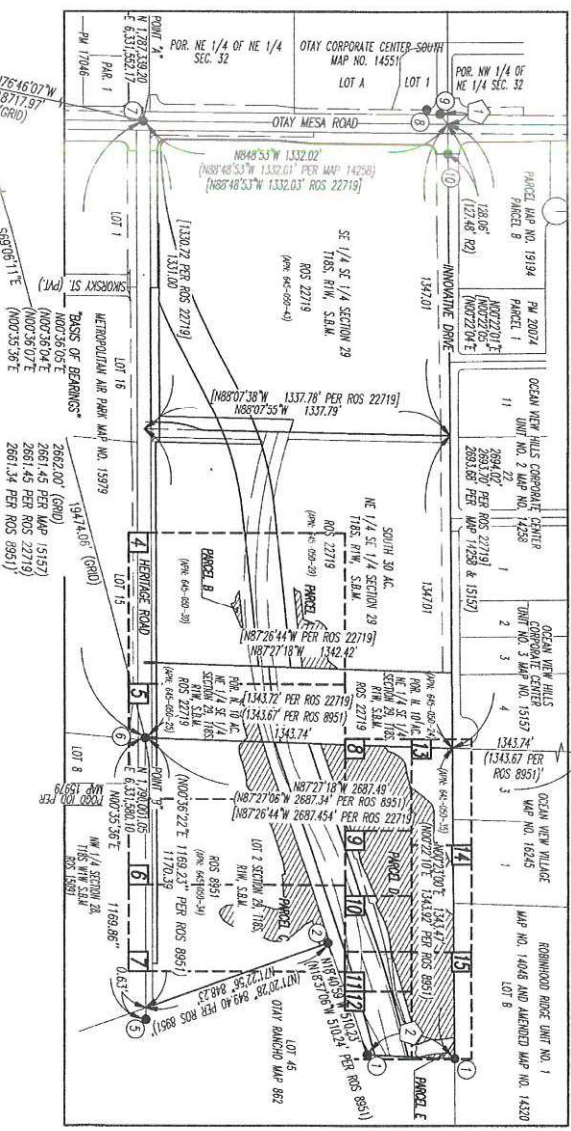
CONVEYOR OF EASEMENT ACQUIRED. SEE SHEETS 4 THROUGH 13.
 PARCEL A: 0.6533 AC. 28,459.28 SQ.FT.
 PARCEL B: 0.0800 AC. 3,431.65 SQ.FT.
 PARCEL C: 1.1920 AC. 129,041.50 SQ.FT.
 PARCEL D: 8.6538 AC. 376,558.66 SQ.FT.
 PARCEL E: 0.0732 AC. 3,188.38 SQ.FT.

REPRODUCIBLE OFFER TO DEEDNOTE
 RIGHT OF WAY
 PROPERTY LINE
 CENTER LINE
 EASEMENT
 POL.B
 POL.A
 T/P.O.B.
 ()
 ()

INDICATES POINT OF BEGINNING*
 INDICATES TRAIL POINT OF BEGINNING*
 INDICATES DATA PER ROS 8951 OR AS NOTED
 INDICATES DATA PER DEED REC. 7-1-02 AS F/P 82-215593, O.R.
 INDICATES DATA PER DEED REC. 5-5-2016 AS F/P 2016-02-04802, O.R.
 INDICATES DATA PER DEED REC. 5-9-2000 AS F/P 2000-02-0150, O.R.
 INDICATES DATA PER DEED REC. 5-5-2000 AS F/P 2000-02-34483, O.R.
 INDICATES DATA PER DEED REC. 5-5-2000 AS F/P 2000-02-34483, O.R.

INDICATES SHEET NUMBER

● FOUND MONUMENT AS NOTED



INDEX KEY MAP
(NO SCALE)

PREPARED BY:

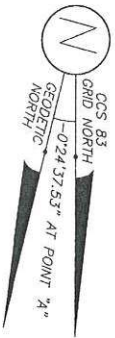
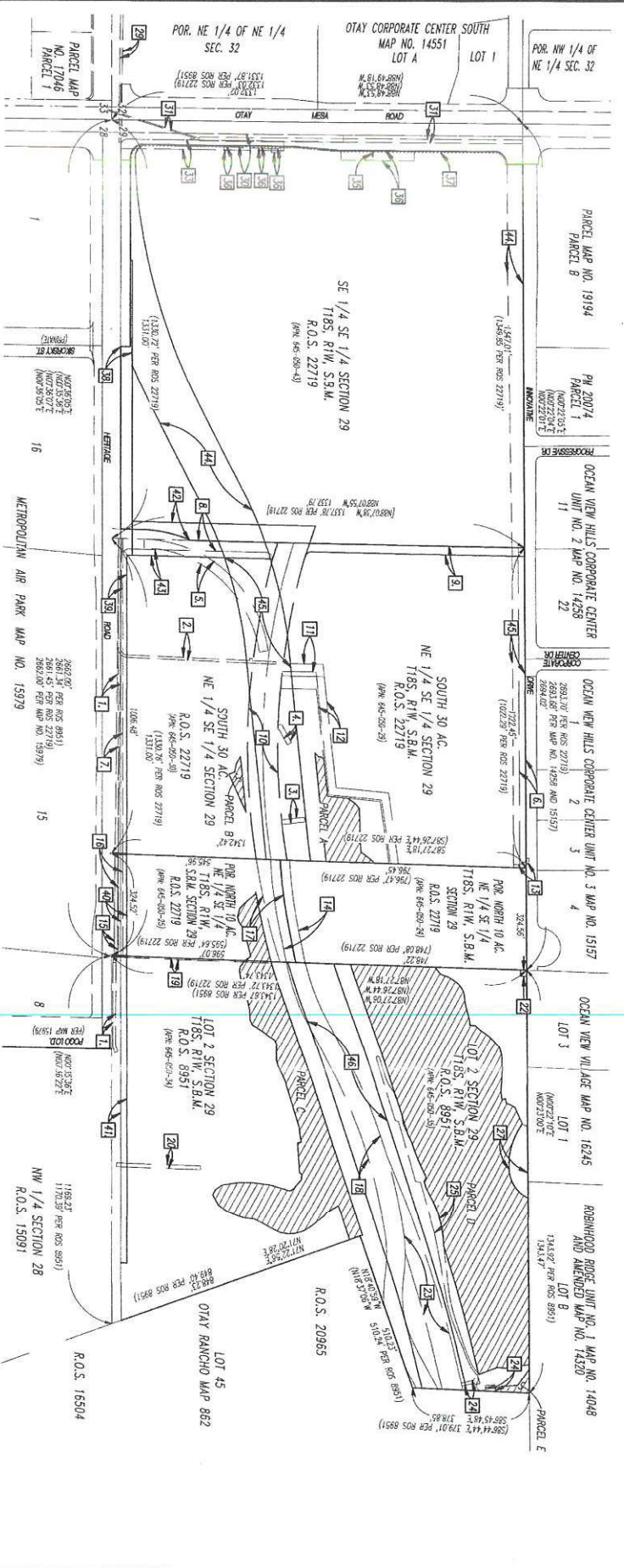
John D. Leppert
 LEPPER ENGINEERING CORP.
 JOHN D. LEPPER, P.E. 26283

9/10/2022
 DATE



Leppert Engineering CORPORATION
 5190 Governor Drive, Suite 205, San Diego, Ca. 92122-2848
 Phone: (619) 597-2001 Fax: (619) 597-2009

DOCUMENT NO. 1024-D37124D	RECORDED: SEPTEMBER 13, 2021
COVENANT OF EASEMENT IN SECTION 29, TOWNSHIP 18 SOUTH, RANGE 1 WEST, SAN BERNARDINO BASE AND MERIDIAN	
CITY OF SAN DIEGO, CALIFORNIA SHEET 7 OF 15 SHEET	PTS. NO. 610624
RECORDED: 4/4	DATE: 1786-6323
PREPARED BY: NALINE	DATE: 146-1743
APPROVED DATE: FILED	CAMBERT ENGINEERS
ORIGINAL: LEC	41034-1-C



Leppert Engineering
 CORPORATION
 5190 Governor Drive, Suite 205, San Diego, CA 92122-2848
 Phone: (619) 597-2001 Fax: (619) 597-2009

DOCUMENT NO. _____	RECORDED _____
EXISTING EASEMENTS IN A POR. OF SECTION 29, TOWNSHIP 18 SOUTH, RANGE 1 WEST, SAN BERNARDINO BASE AND MERIDIAN	
CITY OF SAN DIEGO, CALIFORNIA SHEET 2 OF 15 SHEET	PTS. NO. 610624
DATE: 11/14/03 BY: LJC APPROVED DATE: FILMED	1786-6323 CCS NAD 83 COORDINATES 146-1763 LAMBERT COORDINATES
41034-2-C	

EXISTING EASEMENTS OF RECORD:

1. AN EASEMENT FOR PUBLIC UTILITIES AND INCIDENTAL PURPOSES, RECORDED FEBRUARY 26, 1974 AS INSTRUMENT NO. 74-041597 OF OFFICIAL RECORDS, IN FAVOR OF: SAN DIEGO GAS & ELECTRIC COMPANY
2. AN EASEMENT FOR PUBLIC UTILITIES AND INCIDENTAL PURPOSES, RECORDED AUGUST 6, 1974 AS INSTRUMENT NO. 74-217162 OF OFFICIAL RECORDS, IN FAVOR OF: SAN DIEGO GAS & ELECTRIC COMPANY
3. AN EASEMENT FOR DRAIN OF DRAINS AND INCIDENTAL PURPOSES, RECORDED OCTOBER 20, 1975 AS INSTRUMENT NO. 75-289483 OF OFFICIAL RECORDS, IN FAVOR OF: THE CITY OF SAN DIEGO, A MUNICIPAL CORPORATION
4. AN EASEMENT FOR DRAIN OF DRAINS AND INCIDENTAL PURPOSES, RECORDED OCTOBER 20, 1975 AS INSTRUMENT NO. 75-289484 OF OFFICIAL RECORDS, IN FAVOR OF: THE CITY OF SAN DIEGO, A MUNICIPAL CORPORATION
5. EASEMENTS FOR THE PURPOSES SHOWN BELOW AND RIGHTS INCIDENTAL THEREOF AS RESERVED IN A DECLARATION:
PURPOSE: WATER FACILITIES, INGRESS AND EGRESS
RECORDING DATE: MARCH 30, 1976
RECORDING NO.: 76-092880
6. AN EASEMENT FOR ROAD AND INCIDENTAL PURPOSES, RECORDED JULY 14, 1977 AS INSTRUMENT NO. 77-282301 OF OFFICIAL RECORDS, IN FAVOR OF: MELVYN V. INGALLS AND ANNA K. INGALLS, HUSBAND AND WIFE, AS JOINT TENANTS
7. AN EASEMENT FOR PUBLIC STREET AND INCIDENTAL PURPOSES, RECORDED JULY 20, 1977 AS INSTRUMENT NO. 77-291276 OF OFFICIAL RECORDS, IN FAVOR OF: THE CITY OF SAN DIEGO, A MUNICIPAL CORPORATION
8. AN EASEMENT FOR PUBLIC STREET AND INCIDENTAL PURPOSES, RECORDED JULY 20, 1977 AS INSTRUMENT NO. 77-291278 OF OFFICIAL RECORDS, IN FAVOR OF: THE CITY OF SAN DIEGO, A MUNICIPAL CORPORATION
9. AN OFFER OF DEDICATION FOR PUBLIC STREET AND INCIDENTAL PURPOSES, RECORDED JULY 20, 1977 AS INSTRUMENT NO. 77-291279 OF OFFICIAL RECORDS, TO: THE CITY OF SAN DIEGO
10. AN EASEMENT FOR PUBLIC STREET AND INCIDENTAL PURPOSES, RECORDED JULY 20, 1977 AS INSTRUMENT NO. 77-291280 OF OFFICIAL RECORDS, IN FAVOR OF: THE CITY OF SAN DIEGO, A MUNICIPAL CORPORATION
11. AN EASEMENT FOR ROAD AND UTILITIES AND INCIDENTAL PURPOSES, RECORDED DECEMBER 7, 1977 AS INSTRUMENT NO. 77-505787 OF OFFICIAL RECORDS, IN FAVOR OF: DAN RICHLER AND NANCY RICHLER, HUSBAND AND WIFE
12. AN EASEMENT FOR ROAD AND UTILITIES AND INCIDENTAL PURPOSES, RECORDED JULY 13, 1982 AS INSTRUMENT NO. 82-215350 OF OFFICIAL RECORDS, IN FAVOR OF: MELVYN V. INGALLS AND ANNA K. INGALLS, HUSBAND AND WIFE, AS JOINT TENANTS AND DAN RICHLER, HUSBAND AND WIFE, AS JOINT TENANTS
13. AN EASEMENT FOR PUBLIC UTILITIES AND INCIDENTAL PURPOSES, RECORDED JULY 8, 1985 AS INSTRUMENT NO. 85-242808 OF OFFICIAL RECORDS, IN FAVOR OF: SAN DIEGO GAS & ELECTRIC COMPANY
14. AN EASEMENT FOR HIGHWAY RIGHT OF WAY TOGETHER WITH THE POWER AND RIGHT TO EXTEND DRAINAGE STRUCTURES AND EXCAVATION AND EQUIPMENT SLOPES AND INCIDENTAL PURPOSES, RECORDED MAY 15, 1946 IN BOOK 2134, PAGE 123 OF OFFICIAL RECORDS, IN FAVOR OF: COUNTY OF SAN DIEGO
15. AN EASEMENT FOR TRANSMISSION AND DISTRIBUTION OF ELECTRICITY AND INCIDENTAL PURPOSES, RECORDED FEBRUARY 26, 1974 AS INSTRUMENT NO. 74-041596 OF OFFICIAL RECORDS, IN FAVOR OF: SAN DIEGO GAS & ELECTRIC COMPANY, A CORPORATION
16. AN EASEMENT FOR PUBLIC STREET AND INCIDENTAL PURPOSES, RECORDED JULY 20, 1977 AS INSTRUMENT NO. 77-291277 OF OFFICIAL RECORDS, IN FAVOR OF: CITY OF SAN DIEGO
17. AN EASEMENT FOR PUBLIC STREET AND INCIDENTAL PURPOSES, RECORDED JULY 23, 1977 AS INSTRUMENT NO. 77-291280 OF OFFICIAL RECORDS, IN FAVOR OF: CITY OF SAN DIEGO
18. AN EASEMENT FOR RIGHT OF WAY FOR PUBLIC HIGHWAY AND INCIDENTAL PURPOSES, RECORDED MAY 15, 1946 AS INSTRUMENT NO. 52025 IN BOOK 2132, PAGE 161 OF OFFICIAL RECORDS, IN FAVOR OF: COUNTY OF SAN DIEGO
19. AN EASEMENT FOR EITHER OR BOTH PAUL LINES, CONDUITS AND INCIDENTAL PURPOSES, RECORDED JUNE 9, 1969 AS INSTRUMENT NO. 51449 IN BOOK 7115, PAGE 587 OF OFFICIAL RECORDS, IN FAVOR OF: PACIFIC TELEPHONE AND TELEGRAPH COMPANY
20. AN EASEMENT FOR TRANSMISSION AND DISTRIBUTION OF ELECTRICITY AND INCIDENTAL PURPOSES, RECORDED AUGUST 27, 1974 AS INSTRUMENT NO. 74-239800 OF OFFICIAL RECORDS, IN FAVOR OF: SAN DIEGO GAS & ELECTRIC COMPANY, A CORPORATION
21. INTENTIONALLY DELETED.
22. AN EASEMENT FOR RIGHT OF WAY FOR ROAD AND INCIDENTAL PURPOSES, RECORDED FEBRUARY 2, 1981 AS INSTRUMENT NO. 81-025275 OF OFFICIAL RECORDS, IN FAVOR OF: DONALD A. HOLT
23. AN EASEMENT FOR RIGHT-OF-WAY FOR PUBLIC STREET, AND INCIDENTS AND APPURTENANCES AND INCIDENTAL PURPOSES, RECORDED MAY 5, 2000 AS INSTRUMENT NO. 2000-0234474 OF OFFICIAL RECORDS, IN FAVOR OF: CITY OF SAN DIEGO, A MUNICIPAL CORPORATION
24. AN EASEMENT FOR DRAINAGE FACILITIES TOGETHER WITH THE RIGHT OF INGRESS AND EGRESS AND INCIDENTAL PURPOSES, RECORDED MAY 5, 2000 AS INSTRUMENT NO. 2000-0234483 OF OFFICIAL RECORDS, IN FAVOR OF: CITY OF SAN DIEGO, A MUNICIPAL CORPORATION
25. AN EASEMENT FOR CONSERVATION PURPOSES AND INCIDENTAL PURPOSES, RECORDED MAY 9, 2000 AS INSTRUMENT NO. 2000-0240150 OF OFFICIAL RECORDS, IN FAVOR OF: THE UNITED STATES OF AMERICA, ACTING BY AND THROUGH THE U.S. ARMY CORPS OF ENGINEERS
26. AN EASEMENT FOR (1) AERIAL ELECTRIC FACILITIES AND APPURTENANCES FOR THE TRANSMISSION AND DISTRIBUTION OF ELECTRICITY, (2) AERIAL COMMUNICATION FACILITIES, AND APPURTENANCES TOGETHER WITH THE RIGHT OF INGRESS HERETO AND EGRESS THEREFROM AND INCIDENTAL PURPOSES, RECORDED OCTOBER 20, 2008 AS INSTRUMENT NO. 2008-0748195 OF OFFICIAL RECORDS, IN FAVOR OF: SAN DIEGO GAS & ELECTRIC COMPANY, A CORPORATION
27. THE LOCATION OF THE EASEMENT CANNOT BE DETERMINED FROM RECORD INFORMATION.
28. AN EASEMENT FOR MAINTENANCE OF VEGETATION AND INCIDENTAL PURPOSES, RECORDED MAY 25, 2016 AS INSTRUMENT NO. 2016-0254902 OF OFFICIAL RECORDS, IN FAVOR OF: MELVYN V. INGALLS
29. AN EASEMENT FOR POLES, WIRES AND ANCHORS AND INCIDENTAL PURPOSES IN THE DOCUMENT RECORDED OCTOBER 19, 1946 AS BOOK 2383, PAGE 219 OF OFFICIAL RECORDS
30. THE LOCATION OF THE EASEMENT CANNOT BE DETERMINED FROM RECORD INFORMATION.
31. AN EASEMENT FOR PUBLIC UTILITIES, INGRESS AND EGRESS AND INCIDENTAL PURPOSES IN THE DOCUMENT RECORDED FEBRUARY 26, 1974 AS INSTRUMENT NO. 74-041597 OF OFFICIAL RECORDS.
32. AN EASEMENT FOR EARTH ENHANCEMENT OR EXCAVATION, SLOPE OR SLOPES AND INCIDENTAL PURPOSES IN THE DOCUMENT RECORDED MAY 25, 1943 AS INSTRUMENT NO. 83-172899 OF OFFICIAL RECORDS.
33. AN EASEMENT FOR PUBLIC UTILITIES, INGRESS AND EGRESS AND INCIDENTAL PURPOSES IN THE DOCUMENT RECORDED OCTOBER 27, 1983 AS INSTRUMENT NO. 83-388464 OF OFFICIAL RECORDS.
34. BY AN ASSIGNMENT, RECORDED NOVEMBER 21, 1983 AS FILE NO. 83-421339 OF OFFICIAL RECORDS, SAN DIEGO GAS AND ELECTRIC COMPANY, A PUBLIC UTILITY CORPORATION HEREBY ASSIGNS TO THE PACIFIC TELEPHONE & TELEGRAPH COMPANY, UNDER ITS TERMS AND CONDITIONS OF THAT CERTAIN AGREEMENT FOR JOINT DISTRIBUTION EASEMENTS BETWEEN SBC&E AND P&T, DATED MARCH 31, 1982, THAT CERTAIN EASEMENT.
35. AN EASEMENT FOR DRAINAGE STRUCTURES AND INCIDENTAL PURPOSES IN THE DOCUMENT RECORDED JANUARY 30, 1997 AS INSTRUMENT NO. 87-51802 OF OFFICIAL RECORDS.
36. AN EASEMENT FOR PUBLIC UTILITIES, INGRESS AND EGRESS AND INCIDENTAL PURPOSES IN THE DOCUMENT RECORDED MAY 02, 1989 AS INSTRUMENT NO. 89-29479 OF OFFICIAL RECORDS, THE LOCATION OF THE EASEMENT CANNOT BE DETERMINED FROM RECORD INFORMATION.



37. AN EASEMENT FOR PUBLIC STREET AND INCIDENTAL PURPOSES, RECORDED MARCH 13, 1987 AS INSTRUMENT NO. 87-0290749 AND DOCUMENT RECORDED OCTOBER 01, 1989 AS INSTRUMENT NO. 89-629066 OF OFFICIAL RECORDS
38. AN EASEMENT FOR SLOPE, DRAINAGE, RETENTION BASIN AND TEMPORARY CONSTRUCTION AND INCIDENTAL PURPOSES IN THE DOCUMENT RECORDED OCTOBER 01, 1989 AS INSTRUMENT NO. 89-629066 OF OFFICIAL RECORDS
39. AN EASEMENT FOR RIGHT-OF-WAY FOR PUBLIC STREET AND INCIDENTAL PURPOSES, RECORDED OCTOBER 01, 1989 AS INSTRUMENT NO. 89-629066 OF OFFICIAL RECORDS
40. AN EASEMENT FOR RIGHT-OF-WAY FOR PUBLIC STREET AND INCIDENTAL PURPOSES, RECORDED OCTOBER 01, 1989 AS INSTRUMENT NO. 89-629066 OF OFFICIAL RECORDS
41. AN EASEMENT FOR RIGHT-OF-WAY FOR PUBLIC STREET, AND INCIDENTS AND APPURTENANCES AND INCIDENTAL PURPOSES, RECORDED JULY 14, 2022 AS INSTRUMENT NO. 2022-0290276 OF OFFICIAL RECORDS, IN FAVOR OF: CITY OF SAN DIEGO, A MUNICIPAL CORPORATION
42. AN EASEMENT FOR RIGHT-OF-WAY FOR PUBLIC STREET, AND INCIDENTS AND APPURTENANCES AND INCIDENTAL PURPOSES, RECORDED JULY 14, 2022 AS INSTRUMENT NO. 2022-0290277 OF OFFICIAL RECORDS, IN FAVOR OF: CITY OF SAN DIEGO, A MUNICIPAL CORPORATION
43. AN EASEMENT FOR RIGHT-OF-WAY FOR PUBLIC STREET, AND INCIDENTS AND APPURTENANCES AND INCIDENTAL PURPOSES, RECORDED JULY 26, 2022 AS INSTRUMENT NO. 2022-0290296 OF OFFICIAL RECORDS, IN FAVOR OF: CITY OF SAN DIEGO, A MUNICIPAL CORPORATION
44. AN REVOCABLE OFFER OF DEDICATION FOR RIGHT-OF-WAY FOR PUBLIC STREET, AND INCIDENTS AND APPURTENANCES AND INCIDENTAL PURPOSES, RECORDED JULY 14, 2022 AS INSTRUMENT NO. 2022-0290174 OF OFFICIAL RECORDS, IN FAVOR OF: CITY OF SAN DIEGO, A MUNICIPAL CORPORATION
45. AN REVOCABLE OFFER OF DEDICATION FOR RIGHT-OF-WAY FOR PUBLIC STREET, AND INCIDENTS AND APPURTENANCES AND INCIDENTAL PURPOSES, RECORDED JULY 14, 2022 AS INSTRUMENT NO. 2022-0290185 OF OFFICIAL RECORDS, IN FAVOR OF: CITY OF SAN DIEGO, A MUNICIPAL CORPORATION
46. AN REVOCABLE OFFER OF DEDICATION FOR RIGHT-OF-WAY FOR PUBLIC STREET, AND INCIDENTS AND APPURTENANCES AND INCIDENTAL PURPOSES, RECORDED JULY 14, 2022 AS INSTRUMENT NO. 2022-0290197 OF OFFICIAL RECORDS, IN FAVOR OF: CITY OF SAN DIEGO, A MUNICIPAL CORPORATION

35. AN EASEMENT FOR PUBLIC UTILITIES, INGRESS AND EGRESS AND INCIDENTAL PURPOSES IN THE DOCUMENT RECORDED JUNE 16, 1988 AS INSTRUMENT NO. 88-585411 OF OFFICIAL RECORDS.

36. AN EASEMENT FOR SLOPE, DRAINAGE, RETENTION BASIN AND TEMPORARY CONSTRUCTION AND INCIDENTAL PURPOSES IN THE DOCUMENT RECORDED OCTOBER 01, 1989 AS INSTRUMENT NO. 89-629066 OF OFFICIAL RECORDS.

37. AN EASEMENT FOR RIGHT-OF-WAY FOR PUBLIC STREET AND INCIDENTAL PURPOSES, RECORDED MARCH 13, 1987 AS INSTRUMENT NO. 87-0290749 AND DOCUMENT RECORDED OCTOBER 01, 1989 AS INSTRUMENT NO. 89-629066 OF OFFICIAL RECORDS

38. AN EASEMENT FOR RIGHT-OF-WAY FOR PUBLIC STREET AND INCIDENTAL PURPOSES, RECORDED OCTOBER 01, 1989 AS INSTRUMENT NO. 89-629066 OF OFFICIAL RECORDS

39. AN EASEMENT FOR RIGHT-OF-WAY FOR PUBLIC STREET AND INCIDENTAL PURPOSES, RECORDED OCTOBER 01, 1989 AS INSTRUMENT NO. 89-629066 OF OFFICIAL RECORDS

40. AN EASEMENT FOR RIGHT-OF-WAY FOR PUBLIC STREET, AND INCIDENTS AND APPURTENANCES AND INCIDENTAL PURPOSES, RECORDED JULY 14, 2022 AS INSTRUMENT NO. 2022-0290274 OF OFFICIAL RECORDS, IN FAVOR OF: CITY OF SAN DIEGO, A MUNICIPAL CORPORATION

41. AN EASEMENT FOR RIGHT-OF-WAY FOR PUBLIC STREET, AND INCIDENTS AND APPURTENANCES AND INCIDENTAL PURPOSES, RECORDED JULY 14, 2022 AS INSTRUMENT NO. 2022-0290276 OF OFFICIAL RECORDS, IN FAVOR OF: CITY OF SAN DIEGO, A MUNICIPAL CORPORATION

42. AN EASEMENT FOR RIGHT-OF-WAY FOR PUBLIC STREET, AND INCIDENTS AND APPURTENANCES AND INCIDENTAL PURPOSES, RECORDED JULY 14, 2022 AS INSTRUMENT NO. 2022-0290277 OF OFFICIAL RECORDS, IN FAVOR OF: CITY OF SAN DIEGO, A MUNICIPAL CORPORATION

43. AN EASEMENT FOR RIGHT-OF-WAY FOR PUBLIC STREET, AND INCIDENTS AND APPURTENANCES AND INCIDENTAL PURPOSES, RECORDED JULY 26, 2022 AS INSTRUMENT NO. 2022-0290296 OF OFFICIAL RECORDS, IN FAVOR OF: CITY OF SAN DIEGO, A MUNICIPAL CORPORATION

44. AN REVOCABLE OFFER OF DEDICATION FOR RIGHT-OF-WAY FOR PUBLIC STREET, AND INCIDENTS AND APPURTENANCES AND INCIDENTAL PURPOSES, RECORDED JULY 14, 2022 AS INSTRUMENT NO. 2022-0290174 OF OFFICIAL RECORDS, IN FAVOR OF: CITY OF SAN DIEGO, A MUNICIPAL CORPORATION

45. AN REVOCABLE OFFER OF DEDICATION FOR RIGHT-OF-WAY FOR PUBLIC STREET, AND INCIDENTS AND APPURTENANCES AND INCIDENTAL PURPOSES, RECORDED JULY 14, 2022 AS INSTRUMENT NO. 2022-0290185 OF OFFICIAL RECORDS, IN FAVOR OF: CITY OF SAN DIEGO, A MUNICIPAL CORPORATION

46. AN REVOCABLE OFFER OF DEDICATION FOR RIGHT-OF-WAY FOR PUBLIC STREET, AND INCIDENTS AND APPURTENANCES AND INCIDENTAL PURPOSES, RECORDED JULY 14, 2022 AS INSTRUMENT NO. 2022-0290197 OF OFFICIAL RECORDS, IN FAVOR OF: CITY OF SAN DIEGO, A MUNICIPAL CORPORATION

DOCUMENT NO. _____

RECORDED: _____

EXISTING EASEMENTS

IN A POR. OF SECTION 29, TOWNSHIP 18 SOUTH,

RANGE 1 WEST, SAN BERNARDINO BASE AND

MERIDIAN

CITY OF SAN DIEGO, CALIFORNIA

SHEET 3 OF 15 SHEET

P15 ND. 610624

1786-6383

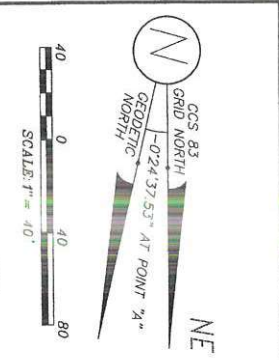
146-1763

41034-3-C

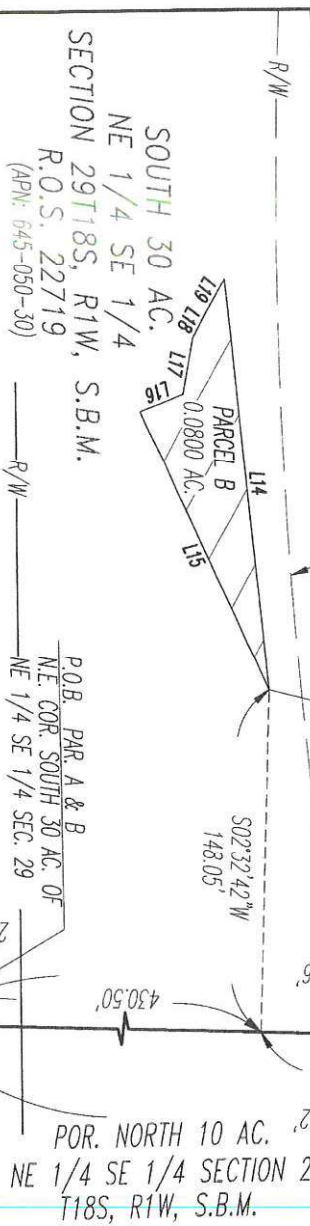
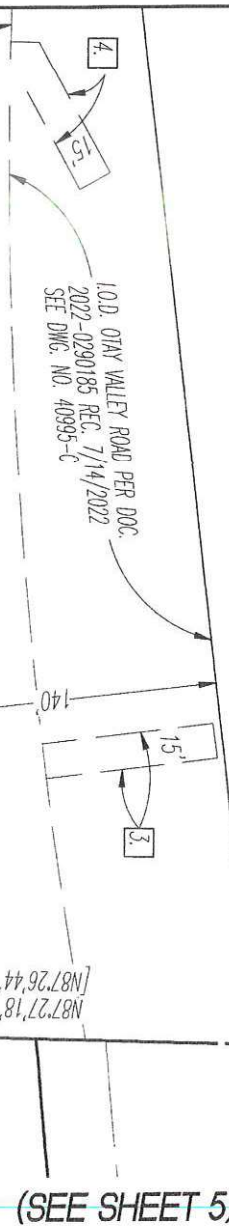
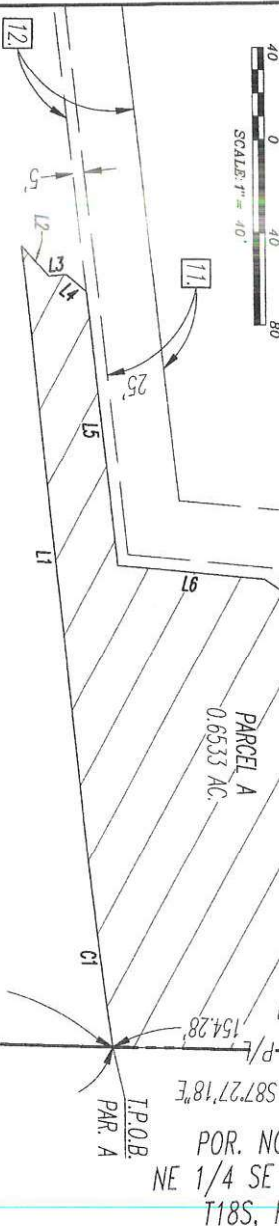
FOR CITY LAND SURVEYOR	DATE	FILED
Y-L-L-K-A-F-L	6/14/22	
DESCRIPTION	BY	APPROVED DATE
ORIGINAL	LEC	

CS&E HAS 83 COORDINATES

LABORATORY COORDINATES



SOUTH 30 AC.
 NE 1/4 SE 1/4 SECTION 29
 T18S, R1W, S.B.M.
 R.O.S. 22719
 (APN: 645-050-29)



(SEE SHEET 5)

PARCEL A TABLE

COURSE	BEARING/DELTA	LENGTH	RADIUS/NOTES
C1	2° 24' 22"	78.95'	1880.00'
L1	S5° 07' 12"E	269.59'	
L2	N40° 43' 37"W	18.05'	
L3	S86° 07' 48"W	7.62'	
L4	N49° 29' 29"W	11.63'	
L5	N5° 28' 35"W	118.82'	S06°00'00"E PER DD1
L6	N83° 20' 44"W	64.68'	S84°00'00"E PER DD1
L7	N54° 13' 49"W	29.44'	
L8	N40° 46' 47"W	20.51'	
L9	N1° 09' 24"W	127.50'	
L10	N7° 26' 42"W	11.36'	
L11	N51° 11' 20"W	46.84'	
L12	N38° 53' 04"W	8.35'	
L13	S87° 27' 18"E	154.28'	

PARCEL B TABLE

COURSE	BEARING/DELTA	LENGTH	RADIUS
L14	N5° 07' 12"W	178.18'	
L15	S23° 40' 47"E	132.50'	
L16	S69° 18' 50"W	19.92'	
L17	S10° 34' 15"W	24.33'	
L18	S28° 10' 34"W	12.63'	
L19	S30° 27' 19"W	16.28'	

POR. NORTH 10 AC.
 NE 1/4 SE 1/4 SECTION 29
 T18S, R1W, S.B.M.



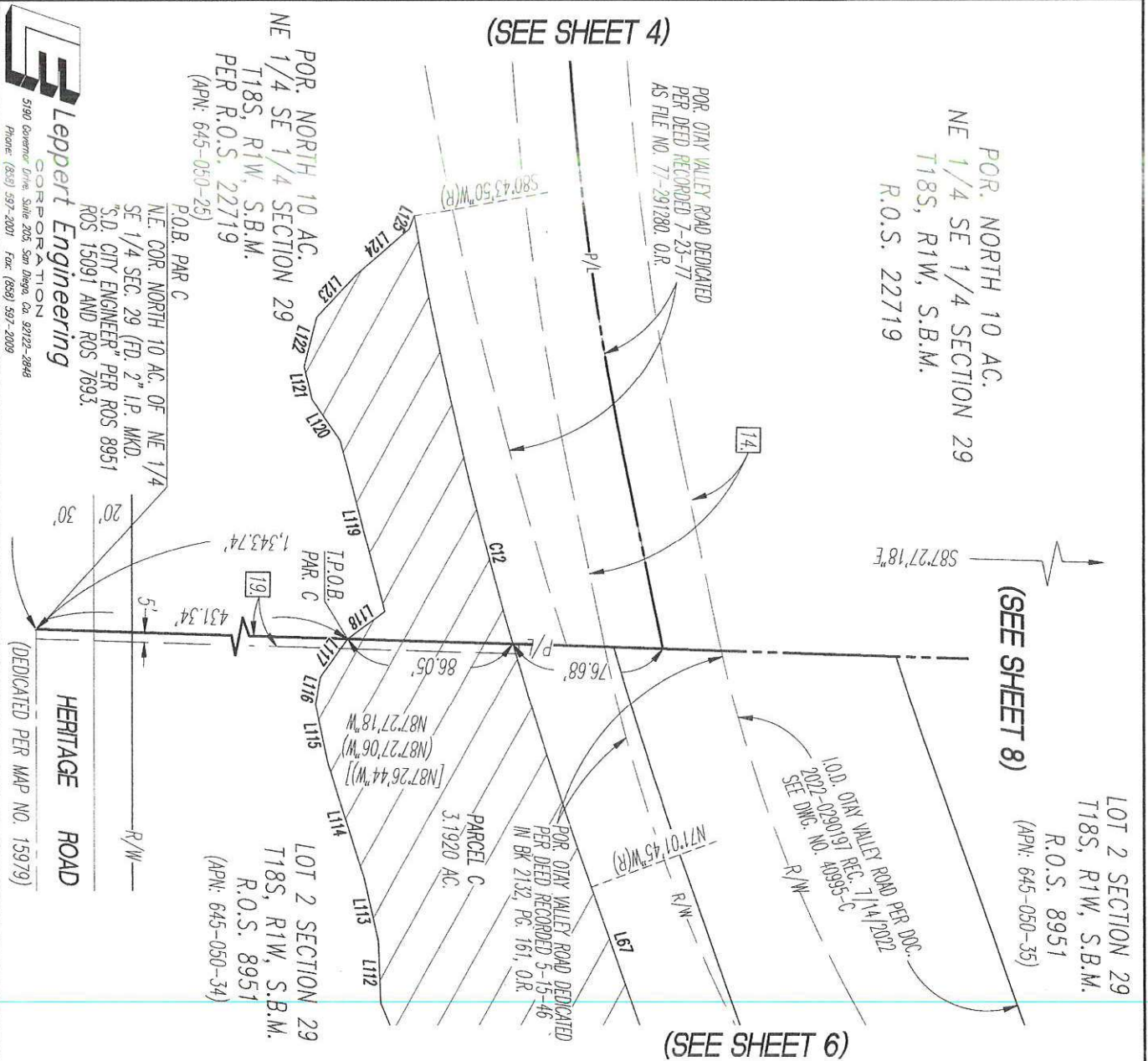
Leppert Engineering
 CORPORATION
 5100 Governor Drive, Suite 205, San Diego, CA 92122-2848
 Phone: (619) 597-2001 Fax: (619) 597-2009

COVENANT OF EASEMENT
 IN SECTION 29, TOWNSHIP 18 SOUTH, RANGE 1
 WEST, SAN BERNARDINO BASE AND MERIDIAN

CITY OF SAN DIEGO, CALIFORNIA
 SHEET 4 OF 15 SHEET

PTS. NO. 610624

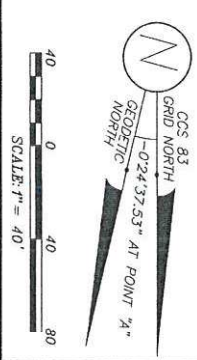
1786-6323
 145-1753
 LAMBERT COORDINATES
 41034-4-C



Leppert Engineering CORPORATION
 5190 Governor Drive, Suite 205, San Diego, Ca. 92122-2848
 Phone: (619) 597-2001 Fax: (619) 597-2009

HERITAGE ROAD
 (DEDICATED PER MAP NO. 15979)

PARCEL C TABLE			
COURSE	BEARING/Delta	LENGTH	RADIUS
C12	9° 42' 05"	358.96'	2120.00'
L67	N18° 58' 15"W	235.46'	
L112	S1° 32' 54"E	32.13'	
L113	S11° 53' 20"E	33.71'	
L114	S17° 09' 42"E	61.78'	
L115	S11° 09' 17"E	31.41'	
L116	S10° 55' 22"W	14.40'	
L117	S36° 52' 44"W	24.22'	
L118	S54° 54' 15"W	23.99'	
L119	S14° 02' 11"E	91.27'	
L120	S34° 45' 21"E	25.89'	
L121	S12° 40' 52"E	17.80'	
L122	S15° 25' 21"W	26.11'	
L123	S44° 25' 16"W	30.39'	
L124	S50° 22' 15"W	36.07'	
L125	S22° 09' 58"W	7.27'	



COVENANT OF EASEMENT
 IN SECTION 29, TOWNSHIP 18 SOUTH, RANGE 1
 WEST, SAN BERNARDINO BASE AND MERIDIAN

CITY OF SAN DIEGO, CALIFORNIA	PTS. NO. 610624
SHEET 5 OF 15 SHEET	
DATE	1786-6-293
APPROVED DATE	CS AND BS COORDINATES
FILED	146-1763
BY	LAMBERT COORDINATES
DESCRIPTION	41034-S-C
LEG.	
ORIGINAL	

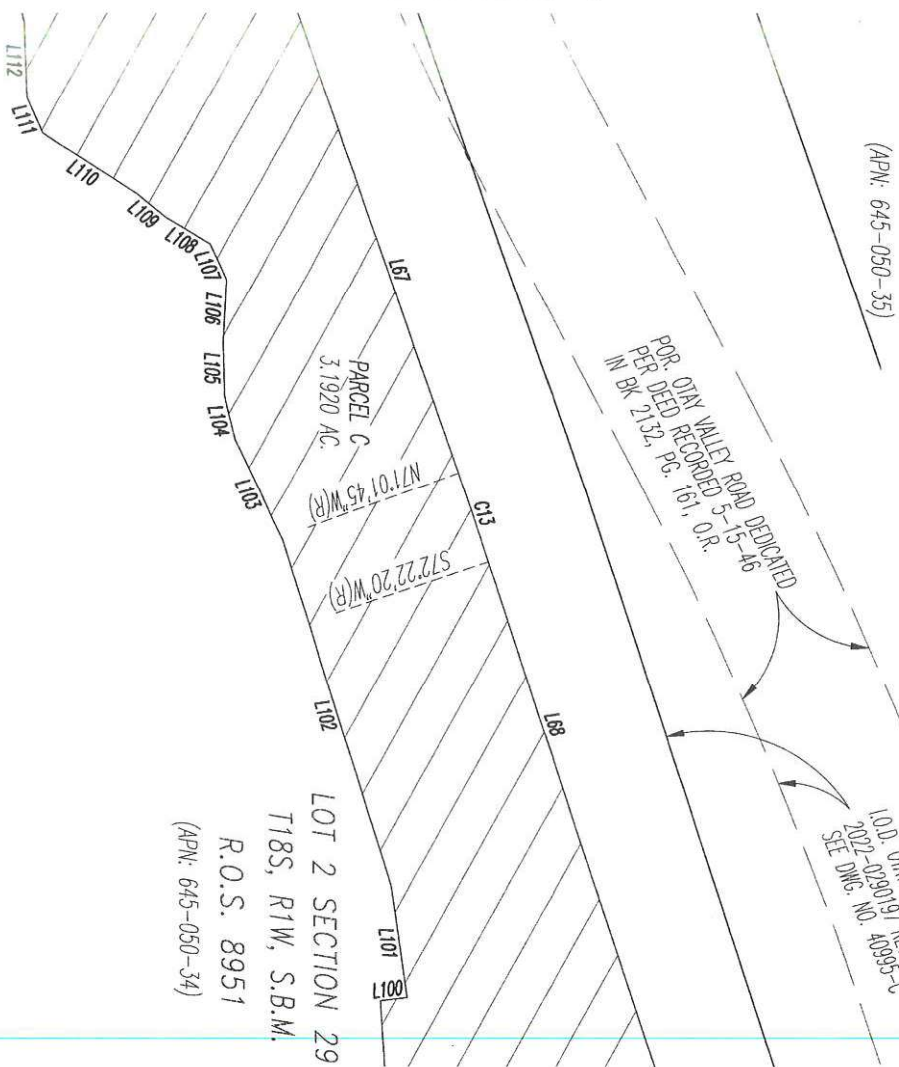
LOT 2 SECTION 29
T18S, R1W, S.B.M.
R.O.S. 8951
(APN: 645-050-35)

(SEE SHEET 8)

POB. OTAY VALLEY ROAD DEDICATED
PER DEED RECORDED 5-15-46
IN BK 2132, PG. 161, O.R.

100' OTAY VALLEY ROAD PER 000-
2022-0290167 REC. L 1/14/2022
SEE DING. NO. 40965-C

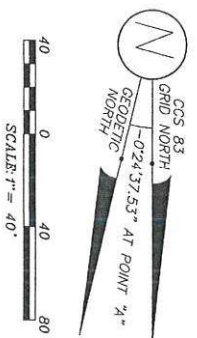
(SEE SHEET 5)



(SEE SHEET 7)

PARCEL C TABLE

COURSE	BEARING/Delta	LENGTH	RADIUS
C12	9° 42' 05"	358.96'	2120.00'
L67	N18° 58' 15"W	235.46'	
C13	1° 20' 35"	40.55'	1730.00'
L68	N17° 37' 40"W	509.25'	
L100	S83° 32' 28"W	11.87'	
L101	S7° 35' 41"E	49.10'	
L102	S17° 04' 46"E	156.65'	
L103	S24° 42' 10"E	47.77'	
L104	S13° 05' 30"E	19.16'	
L105	S1° 01' 23"E	24.31'	
L106	S3° 48' 52"W	26.10'	
L107	S23° 57' 46"E	17.10'	
L108	S58° 27' 54"E	22.41'	
L109	S50° 23' 23"E	16.34'	
L110	S57° 01' 08"E	48.64'	
L111	S22° 37' 12"E	16.93'	
L112	S1° 32' 54"E	32.13'	



COVENANT OF EASEMENT
IN SECTION 29, TOWNSHIP 18 SOUTH, RANGE 1
WEST, SAN BERNARDINO BASE AND MERIDIAN

CITY OF SAN DIEGO, CALIFORNIA
SHEET 6 OF 15 SHEET

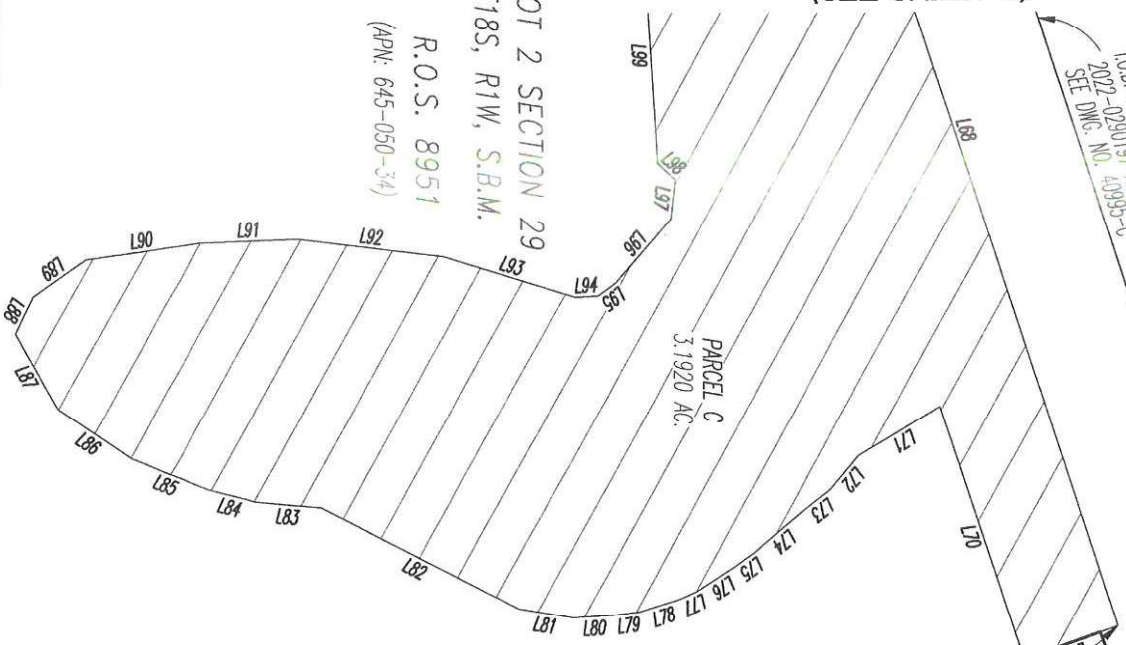
DATE	BY	APPROVED	DATE FILLED	PTS. NO. 610624
1/14/2022	LEC			
FOR CITY LAND SERVICES				1786-6323
DESCRIPTION				146-1763
ORIGINAL				LABRANT COORDINATES
				41034-6-C

I.O.D. OTAY VALLEY ROAD PER DOC.
 2022-0290191 REC. 7/14/2022
 SEE DWG. NO. 40935-C

(SEE SHEET 9)

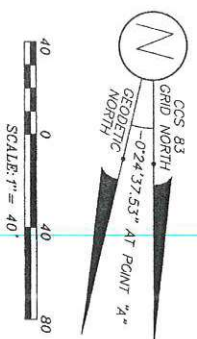
(SEE SHEET 6)

LOT 2 SECTION 29
 T18S, R1W, S.B.M.
 R.O.S. 8951
 (APN: 645-050-34)



PARCEL C TABLE

COURSE	BEARING/Delta	LENGTH	RADIUS
L91	S88° 42' 50"W	42.55'	
L92	N82° 32' 12"W	64.59'	
L93	N72° 19' 48"W	59.88'	
L94	S87° 56' 53"W	10.04'	
L95	S54° 12' 20"W	9.37'	
L96	S42° 12' 47"W	37.08'	
L97	S6° 55' 47"W	17.02'	
L98	S47° 11' 15"E	10.52'	
L99	S2° 48' 37"E	93.60'	



PARCEL C TABLE

COURSE	BEARING/Delta	LENGTH	RADIUS
L68	N17° 37' 40"W	509.25'	
L69	N71° 22' 56"E	43.53'	
L70	S17° 46' 02"E	115.07'	
L71	N60° 12' 46"E	41.28'	
L72	N41° 08' 32"E	18.73'	
L73	N53° 45' 09"E	17.25'	
L74	N50° 51' 49"E	26.78'	
L75	N56° 05' 34"E	9.60'	
L76	N58° 03' 31"E	19.86'	
L77	N66° 20' 42"E	8.54'	
L78	N73° 15' 51"E	18.99'	
L79	N83° 41' 31"E	11.02'	
L80	N87° 20' 27"E	18.16'	
L81	S80° 24' 25"E	23.50'	
L82	S62° 28' 45"E	97.09'	
L83	S84° 15' 58"E	28.55'	
L84	S74° 52' 53"E	21.44'	
L85	S66° 54' 59"E	36.19'	
L86	S55° 18' 17"E	38.41'	
L87	S29° 03' 17"E	37.52'	
L88	S26° 57' 50"W	17.62'	
L89	S56° 00' 34"W	28.00'	
L90	S82° 42' 00"W	49.84'	

COVENANT OF EASEMENT
 IN SECTION 29, TOWNSHIP 18 SOUTH, RANGE 1
 WEST, SAN BERNARDINO BASE AND MERIDIAN

CITY OF SAN DIEGO, CALIFORNIA
 SHEET 7 OF 15 SHEET

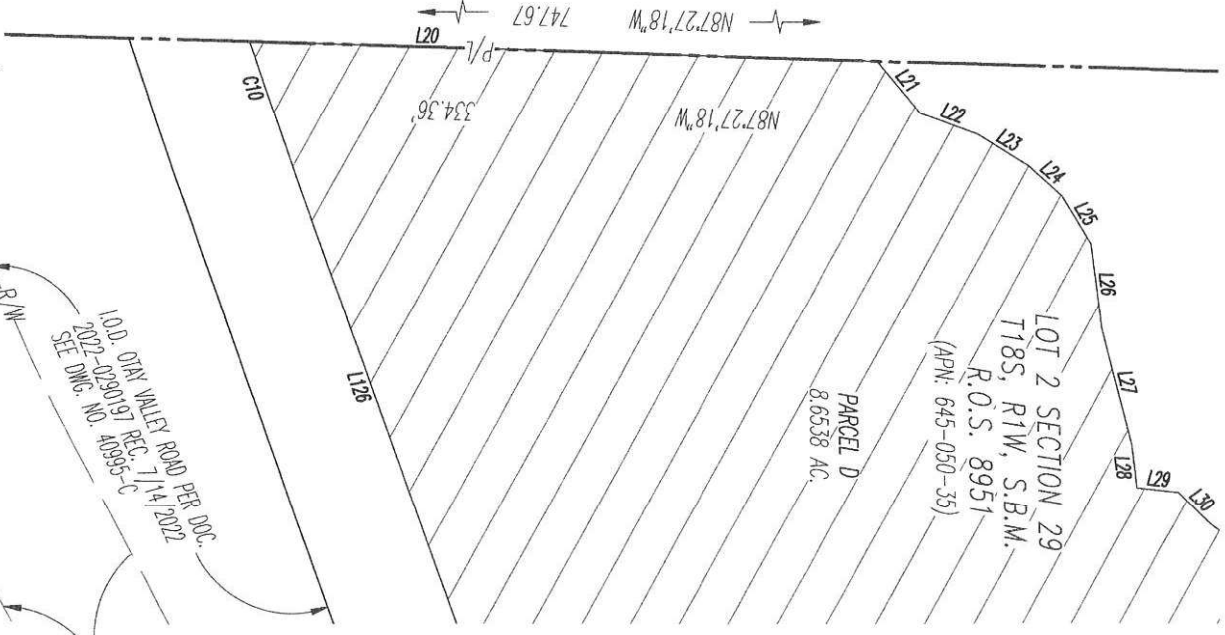
PTS. NO. 610624

DATE	BY	APPROVED DATE	FILED	1786-6323
DESCRIPTION	BY	APPROVED DATE	FILED	CDS MAP 89 COORDINATES
ORIGINAL	LEC			146-1763
				LABENT COORDINATES
				41034-7-C

5190 Governor Line, Suite 205, San Diego, Ca. 92122-2846
 Phone: (619) 597-2001 Fax: (619) 597-2009

(SEE SHEET 13)

POR. NORTH 10 AC.
NE 1/4 SE 1/4 SECTION 29
T18S, R1W, S.B.M. ROS 22719



(SEE SHEET 4)

(SEE SHEET 9)

POR. OTAY VALLEY ROAD DEDICATED
PER DEED RECORDED 5-15-46
IN BK 2, 12, PG. 161, O.R.

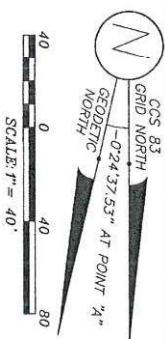
100.0' OTAY VALLEY ROAD PER DOC.
2002-00980101 R.C.C. 1/14/2002
SEE D.M.G. NO. 40999-C

Leppert Engineering
CORPORATION
5190 Governor's Inn, Suite 205, San Diego, Ca. 92122-2844
Phone: (619) 597-2001 Fax: (619) 597-2009

(SEE SHEET 6)

PARCEL D TABLE

COURSE	BEARING/DELTA	LENGTH	RADIUS
L20	N87° 21' 18"W	274.93'	
L21	N39° 02' 06"W	29.39'	
L22	N69° 04' 31"W	26.93'	
L23	N57° 59' 41"W	26.21'	
L24	N47° 51' 44"W	19.67'	
L25	N30° 57' 52"W	24.30'	
L26	N6° 34' 55"W	36.35'	
L27	N13° 51' 05"W	52.21'	
L28	N6° 20' 25"W	18.87'	
L29	N83° 25' 05"W	18.18'	
L30	N45° 00' 02"W	19.64'	
L59	S17° 37' 40"E	55.23'	
C7	0° 10' 58"	0.15'	47.50'
L60	S8° 26' 54"W	2.20'	
L61	S17° 31' 40"E	57.88'	
C8	7° 58' 11"	16.76'	120.50'
L62	S17° 37' 40"E	119.99'	
C9	1° 20' 35"	46.17'	1970.00'
L126	S18° 58' 15"E	235.46'	
C10	1°11'18"	38.99'	1880.00'



COVENANT OF EASEMENT
IN SECTION 29, TOWNSHIP 18 SOUTH, RANGE 1
WEST, SAN BERNARDINO BASE AND MERIDIAN

CITY OF SAN DIEGO, CALIFORNIA
SHEET 8 OF 15 SHEET
PTS. N.D. 610624

FOR CITY LAND SURVEYOR	DATE	1786-6323
DESCRIPTION	BY	C/S AND B3 COORDINATES
APPROVED	DATE	146-1763
ORIGINAL	FILED	LAMBERT COORDINATES
	LEC	41034-8-C

(SEE SHEET 14)

LOT 2 SECTION 29
T18S, R1W, S.B.M.
R.O.S. 8951
(APN: 645-050-35)

PARCEL D
8.6538 AC.

(SEE SHEET 8)

FOR CITY VALLEY ROAD DEDICATED
PER DEED RECORDED 5-15-86
IN BK 21, P. 161, O.R.

1,000 DIA VALLEY ROAD PER DOC.
2002-0290191 REC. 7/14/2002
SEE D.M.G. NO. 40995-C

LOT 2 SECTION 29
T18S, R1W, S.B.M.
R.O.S. 8951
(APN: 645-050-34)

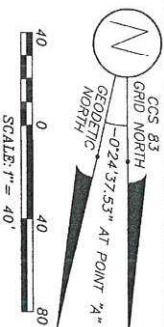
PARCEL C
3.1920 AC.

(SEE SHEET 6)

(SEE SHEET 10)

PARCEL D TABLE

COURSE	BEARING/DELTA	LENGTH	RADIUS
L20	N87° 21' 18"W	274.93'	
L21	N39° 02' 06"W	29.39'	
L22	N69° 04' 31"W	26.93'	
L23	N57° 59' 41"W	26.21'	
L24	N47° 51' 44"W	19.67'	
L25	N30° 57' 52"W	24.30'	
L26	N6° 34' 55"W	36.35'	
L27	N13° 51' 05"W	52.21'	
L28	N6° 20' 25"W	18.87'	
L29	N83° 25' 05"W	18.18'	
L30	N45° 00' 02"W	19.64'	
L59	S17° 37' 40"E	55.23'	
C7	0° 10' 58"	0.15'	47.50'
L60	S8° 26' 54"W	2.20'	
L61	S17° 31' 40"E	57.88'	
C8	7° 58' 11"	16.76'	120.50'
L62	S17° 37' 40"E	119.99'	
C9	1° 20' 35"	46.17'	1970.00'
L126	S18° 58' 15"E	235.46'	
C10	1° 11' 18"	38.99'	1880.00'



SCALE: 1" = 40'

COVENANT OF EASEMENT
IN SECTION 29, TOWNSHIP 18 SOUTH, RANGE 1
WEST, SAN BERNARDINO BASE AND MERIDIAN

CITY OF SAN DIEGO, CALIFORNIA
SHEET 9 OF 15 SHEET

PTS. NO. 610624

DATE	BY	APPROVED DATE	FILED	1786-6323
FOR CITY LAND SURVEYOR				CGS NO. 89 COORDINATES
DESCRIPTION				146-1763
ORIGINAL	LEC			LABENT COORDINATES
				41034-9-C



Leppert Engineering

5190 Governor's Drive, Suite 202, San Diego, CA 92122-2846
Phone: (619) 597-2001 Fax: (619) 597-2009

(SEE SHEET 14)

LOT 2 SECTION 29
T18S, R1W, S.B.M.
PARCEL D
8.6538 AC.
R.O.S. 8951
(APN: 645-050-35)

(SEE SHEET 9)

OTAY VALLEY ROAD PER DED.
PER DED. RECORDED 5-15-46
IN BK 2132, PG. 161, O.R.

I.O.D. OTAY VALLEY ROAD PER DED.
2022-0290197 REC. 7/14/2022
SEE D.M.G. NO. 40995-C

I.O.D. OTAY VALLEY ROAD PER DED.
2022-0290197 REC. 7/14/2022
SEE D.M.G. NO. 40995-C

(SEE SHEET 7)

LOT 2 SECTION 29
T18S, R1W, S.B.M.
R.O.S. 8951
(APN: 645-050-34)

LOT 45
OTAY RANCH MAP 862
R.O.S. 20965

510.23' -N-

N18°40'59"W

N18°37'06"W

N71°22'56"E PER ROS 8951

N71°20'28"E PER ROS 8951

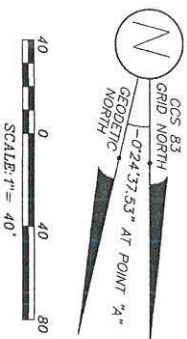
(11) (SEE SHEET 11)

PARCEL C TABLE

COURSE	BEARING/Delta	LENGTH	RADIUS
L68	N17° 37' 40"W	509.25'	
L69	N71° 22' 56"E	43.53'	
L70	S17° 46' 02"E	115.07'	
L71	N60° 12' 46"E	41.28'	

PARCEL D TABLE

COURSE	BEARING/Delta	LENGTH	RADIUS
C6	25° 07' 40"	147.58'	336.50'
L52	S26° 57' 23"E	40.65'	
L53	S16° 54' 52"E	23.45'	
L54	S30° 17' 10"W	13.63'	
L55	S24° 40' 52"E	53.04'	
L56	S20° 46' 38"E	33.39'	
L57	S19° 59' 24"E	36.39'	
L58	S26° 25' 09"E	25.23'	



COVENANT OF EASEMENT
IN SECTION 29, TOWNSHIP 18 SOUTH, RANGE 1
WEST, SAN BERNARDINO BASE AND MERIDIAN

CITY OF SAN DIEGO, CALIFORNIA
SHEET 10 OF 15 SHEET

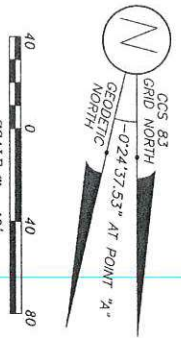
DATE	1/14/22	DATE	1/14/22
FOR CITY LAND SURVEYOR	BY	APPROVED	DATE
DESCRIPTION	BY	APPROVED	DATE
ORIGINAL	LEC		

PTS. NO. 610624
1786-6323
CCS NAD 83 COORDINATES
146-1763
LABENT COORDINATES
41034-10-C

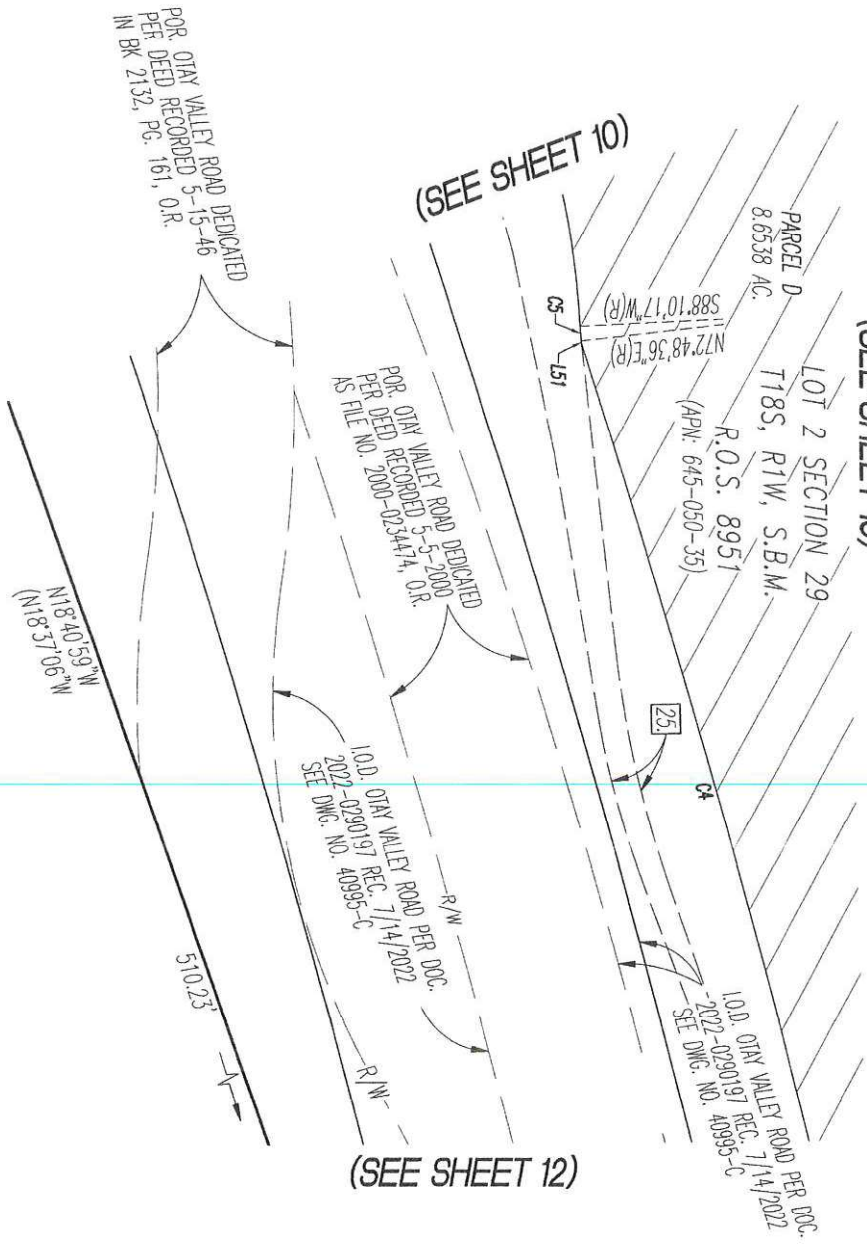


Leppert Engineering
CORPORATION
5190 Governor Drive, Suite 205, San Diego, Ca. 92122-2846
Phone: (619) 597-2001 Fax: (619) 597-2099

PARCEL D TABLE			
COURSE	BEARING/DELTA	LENGTH	RADIUS
L51	S5° 30' 46" E	1.09'	
C5	3° 41' 03"	6.40'	99.50'
C4	4° 30' 15"	402.50'	5120.00'



LOT 45
 OTAY RANCH MAP 862
 R.O.S. 20965



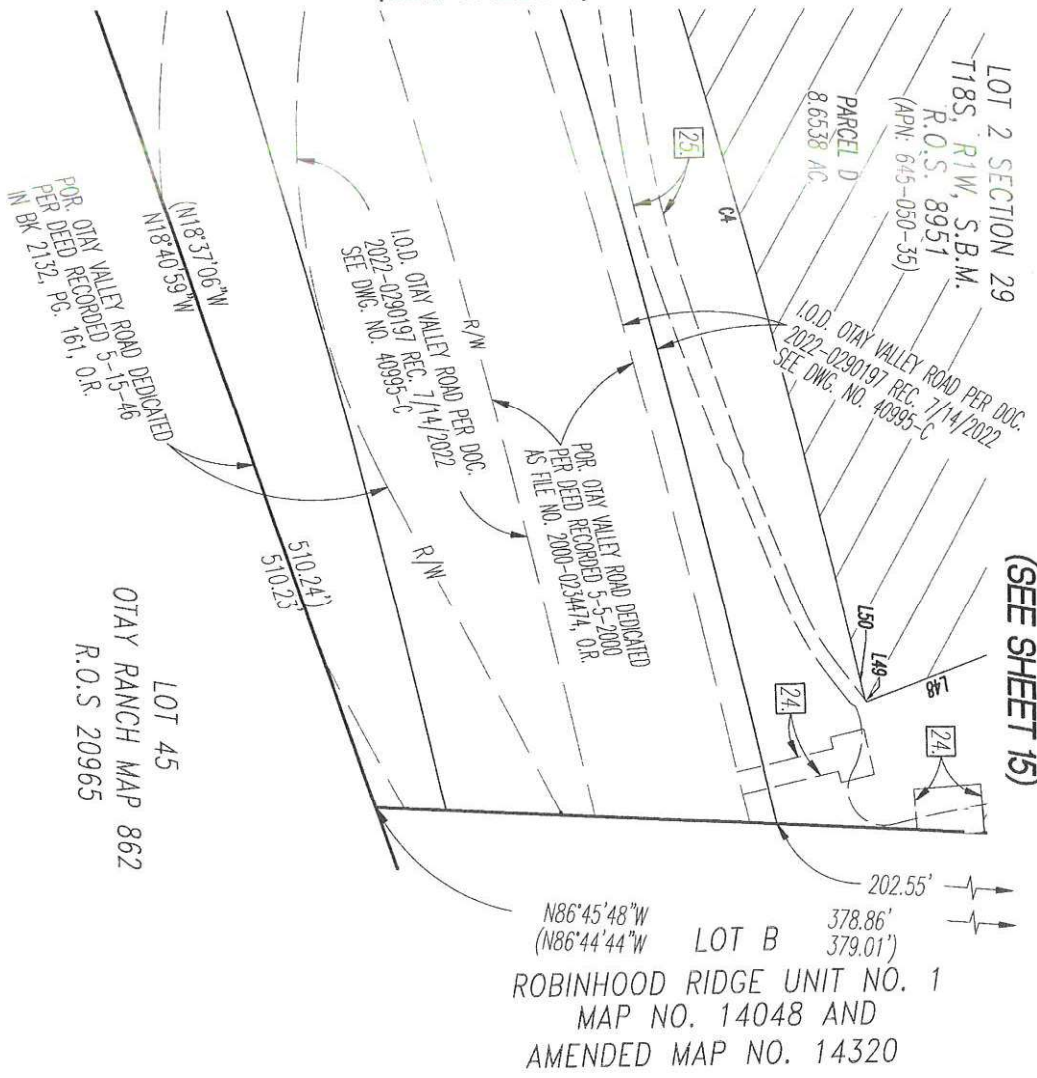
(SEE SHEET 15)

(SEE SHEET 12)

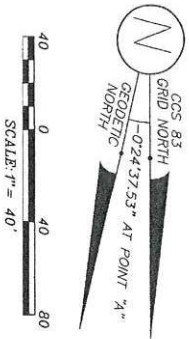
CITY OF SAN DIEGO, CALIFORNIA		PTS. NO. 610624	
COVENANT OF EASEMENT			
IN SECTION 29, TOWNSHIP 18 SOUTH, RANGE 1 WEST, SAN BERNARDINO BASE AND MERIDIAN			
1786-6323 CDS MAD 83 COORDINATES 146-1753 LABRETT COORDINATES		41034-11-C	
THE CITY LAND SERVICES DESCRIPTION BY DATE ORIGINAL LEC	DATE APPROVED DATE FILED	CITY OF SAN DIEGO, CALIFORNIA SHEET 1 OF 15 SHEET	

(SEE SHEET 11)

(SEE SHEET 15)



PARCEL D TABLE			
COURSE	BEARING/Delta	LENGTH	RADIUS
L48	N70° 08' 59"E	63.06'	
L49	S37° 19' 55"E	1.35'	
L50	S12° 41' 09"E	16.21'	
C4	4° 30' 15"	402.50'	5120.00'



Leppert Engineering
 CORPORATION
 5100 Governor Lane, Suite 202, San Diego, Ca. 92122-2848
 Phone: (619) 597-2001 Fax: (619) 597-2009

COVENANT OF EASEMENT
 IN SECTION 29, TOWNSHIP 18 SOUTH, RANGE 1
 WEST, SAN BERNARDINO BASE AND MERIDIAN
 CITY OF SAN DIEGO, CALIFORNIA
 SHEET 12 OF 15 SHEET

DATE	DATE	DATE	DATE
FOR CITY LAND SERVICES	BY	APPROVED	FILED
ORIGINAL	LEC		

PTS. NO. 610624
 1786-6323
 CGS NAD 83 COORDINATES
 146-1763
 LAWYER COORDINATES
 41034-12-C

LOT 4
OCEAN VIEW HILLS
CORPORATE CENTER
UNIT NO. 3
MAP NO. 15157

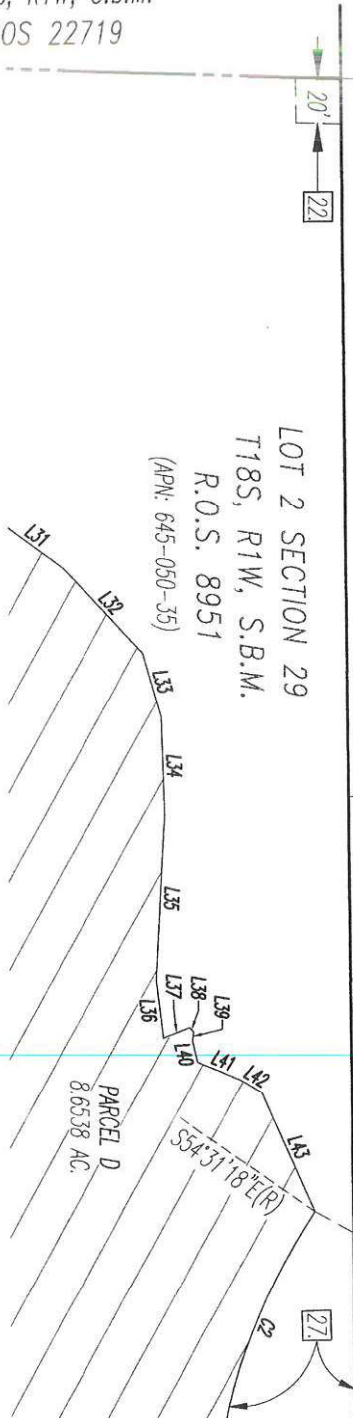
POR. NORTH 10 AC.
NE 1/4 SE 1/4 SECTION 29
T18S, R1W, S.B.M.
ROS 22719

OCEAN VIEW VILLAGE MAP NO. 16245

LOT 3

LOT 1

LOT 2 SECTION 29
T18S, R1W, S.B.M.
R.O.S. 8951
(APN: 645-050-35)



(SEE SHEET 8)

(SEE SHEET 14)

PARCEL D TABLE			
COURSE	BEARING/DELTA	LENGTH	RADIUS
L31	N53° 48' 23"W	35.28'	
L32	N42° 45' 16"W	50.13'	
L33	N15° 22' 34"W	28.81'	
L34	N0° 55' 27"W	43.06'	
L35	N3° 55' 34"E	71.00'	
L36	N6° 20' 26"W	25.15'	
L37	S69° 03' 30"W	12.20'	
L38	N45° 00' 00"W	2.67'	
L39	N7° 54' 33"E	3.97'	
L40	N13° 01' 13"W	9.49'	
L41	N66° 33' 56"W	19.55'	
L42	N58° 00' 48"W	10.97'	
L43	N23° 31' 33"W	56.39'	
C2	24° 36' 09"	109.53'	255.08'



Leppert Engineering
CORPORATION
5190 Governor Drive, Suite 203, San Diego, CA 92122-2848
Phone: (619) 597-2001 Fax: (619) 597-2009

COVENANT OF EASEMENT
IN SECTION 29, TOWNSHIP 18 SOUTH, RANGE 1
WEST, SAN BERNARDINO BASE AND MERIDIAN

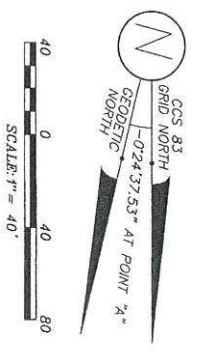
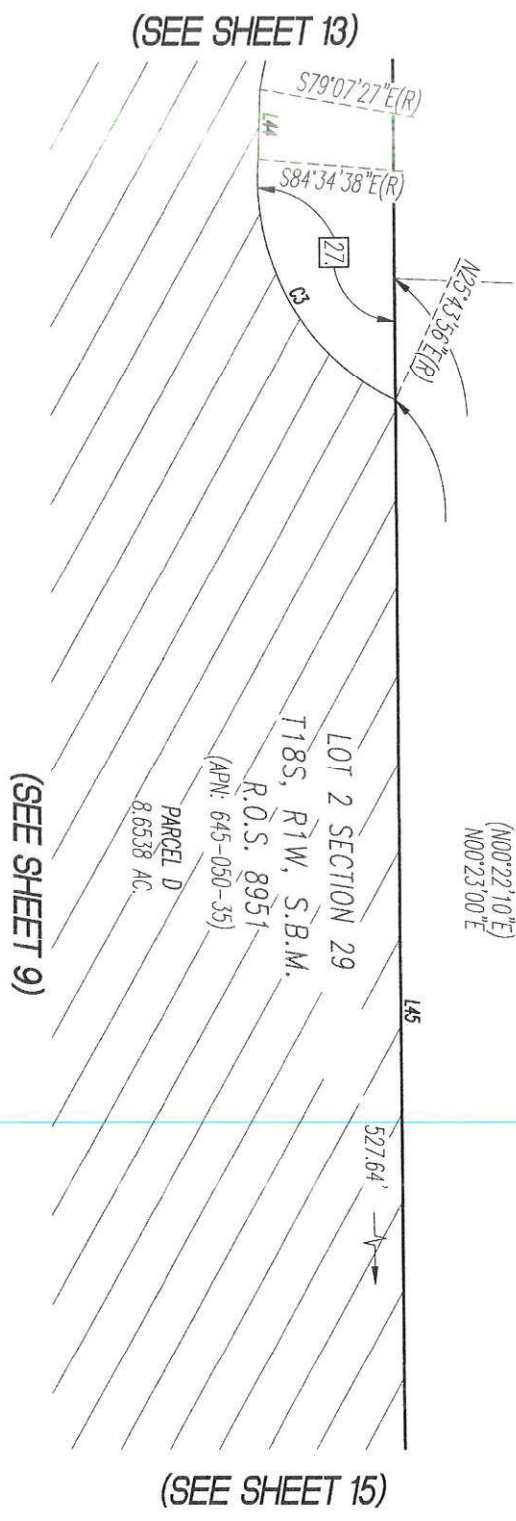
CITY OF SAN DIEGO, CALIFORNIA
SHEET 13 OF 15 SHEET

PTS. NO. 610624

FOR EASEMENT	BY	APPROVED DATE	FILED	1786-6323
DESCRIPTION	LEC			146-1763
ORIGINAL				LAMBERT COORDINATES
				41034-13-C

OCEAN VIEW VILLAGE
 MAP NO. 16245
 LOT 1

LOT B
 ROBINHOOD RIDGE UNIT NO. 1
 MAP NO. 14048 AND AMENDED MAP NO. 14320



PARCEL D TABLE			
COURSE	BEARING/DELTA	LENGTH	RADIUS
L44	N2° 12' 48" E	30.13'	
C3	69° 41' 26"	128.31'	105.49'
L45	N0° 23' 00" E	527.64'	

Leppert Engineering
 CORPORATION
 5190 Governor Drive, Suite 205, San Diego, CA 92122-2646
 Phone: (619) 597-2001 Fax: (619) 597-2009

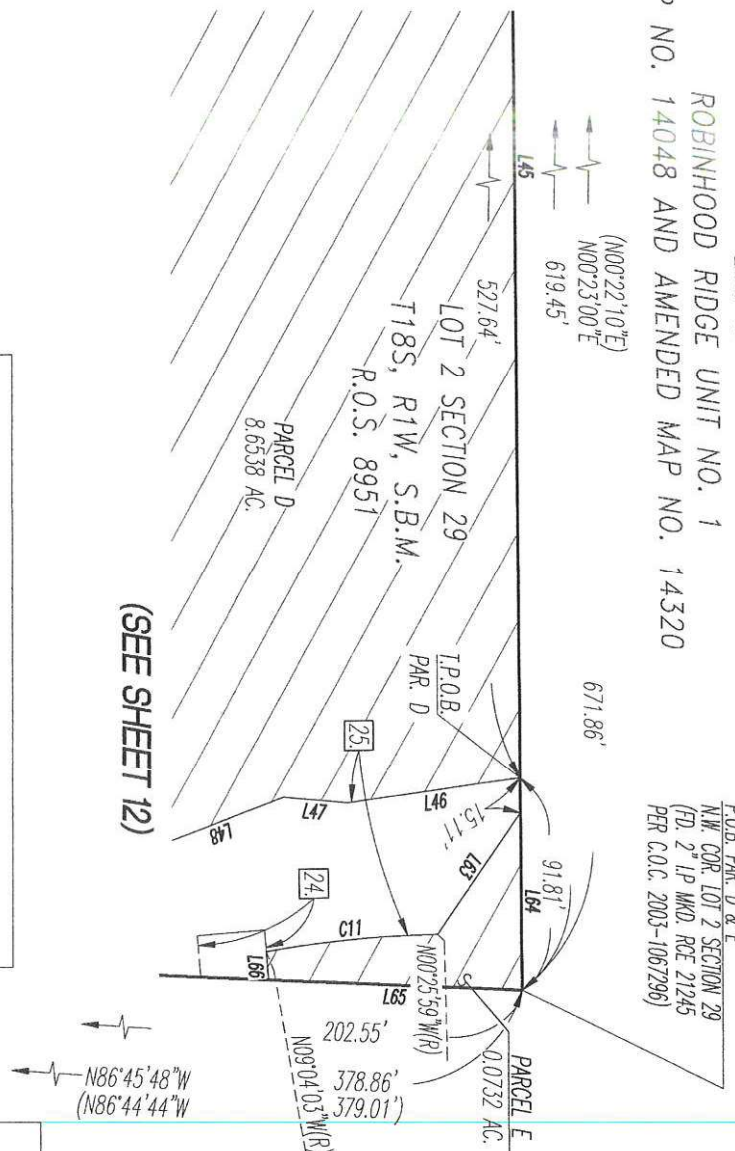
COVENANT OF EASEMENT IN SECTION 29, TOWNSHIP 18 SOUTH, RANGE 1 WEST, SAN BERNARDINO BASE AND MERIDIAN		PTS. ND. 610624	
CITY OF SAN DIEGO, CALIFORNIA SHEET 7 OF 13 SHEET		1796-6323 CCS MAP 83 COORDINATES 146-1763 LAMBERT COORDINATES 41034-14-C	
FOR CITY LAND SURVEYOR DESCRIPTION BY ORIGINAL LEC	APPROVED DATE FILED DATE	DATE	DATE

LOT B
ROBINHOOD RIDGE UNIT NO. 1
MAP NO. 14048 AND AMENDED MAP NO. 14320

P.O.B. PAR. D & E
N.W. COR. LOT 2 SECTION 29
(FD. 2" I.P. MKD. RCE 21245
PER C.O.C. 2003-1067296)

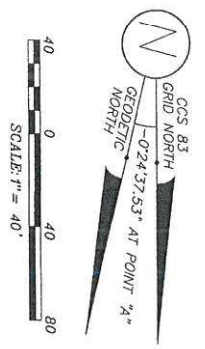
(SEE SHEET 14)

(SEE SHEET 12)



PARCEL D TABLE			
COURSE	BEARING/Delta	LENGTH	RADIUS
L45	N0° 23' 00"E	527.64'	
L46	N82° 43' 04"E	75.93'	
L47	S84° 09' 41"E	28.28'	
L48	N70° 08' 59"E	63.06'	

LOT B
ROBINHOOD RIDGE UNIT NO. 1
MAP NO. 14048 AND
AMENDED MAP NO. 14320



PARCEL E TABLE			
COURSE	BEARING/Delta	LENGTH	RADIUS
L63	S35° 23' 29"W	63.77'	
L64	N0° 23' 00"E	76.70'	
L65	S86° 45' 48"E	110.81'	
L66	S3° 47' 26"E	12.25'	
C11	8° 38' 04"	75.35'	500.00'

COVENANT OF EASEMENT
IN SECTION 29, TOWNSHIP 18 SOUTH, RANGE 1
WEST, SAN BERNARDINO BASE AND MERIDIAN

CITY OF SAN DIEGO, CALIFORNIA
SHEET 15 OF 15 SHEET

DATE	BY	APPROVED DATE	FILED	CDS MAP B3 COORDINATES
1786-6323	146-1753			LANSBET COORDINATES
41034-15-C				