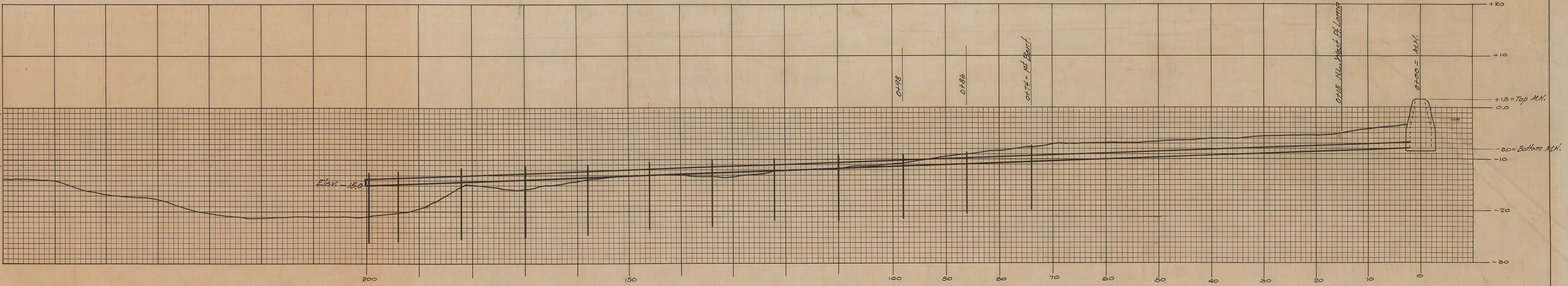
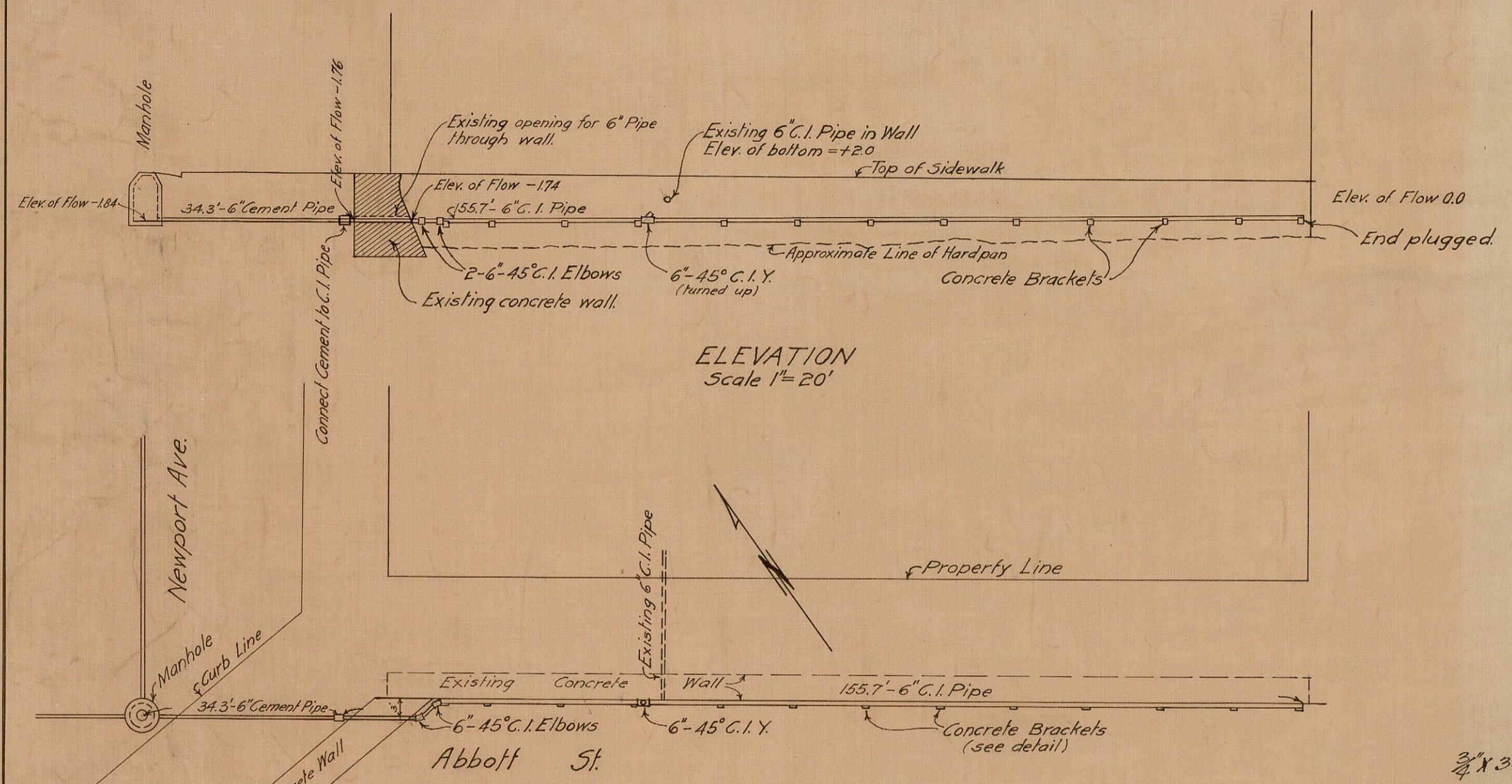


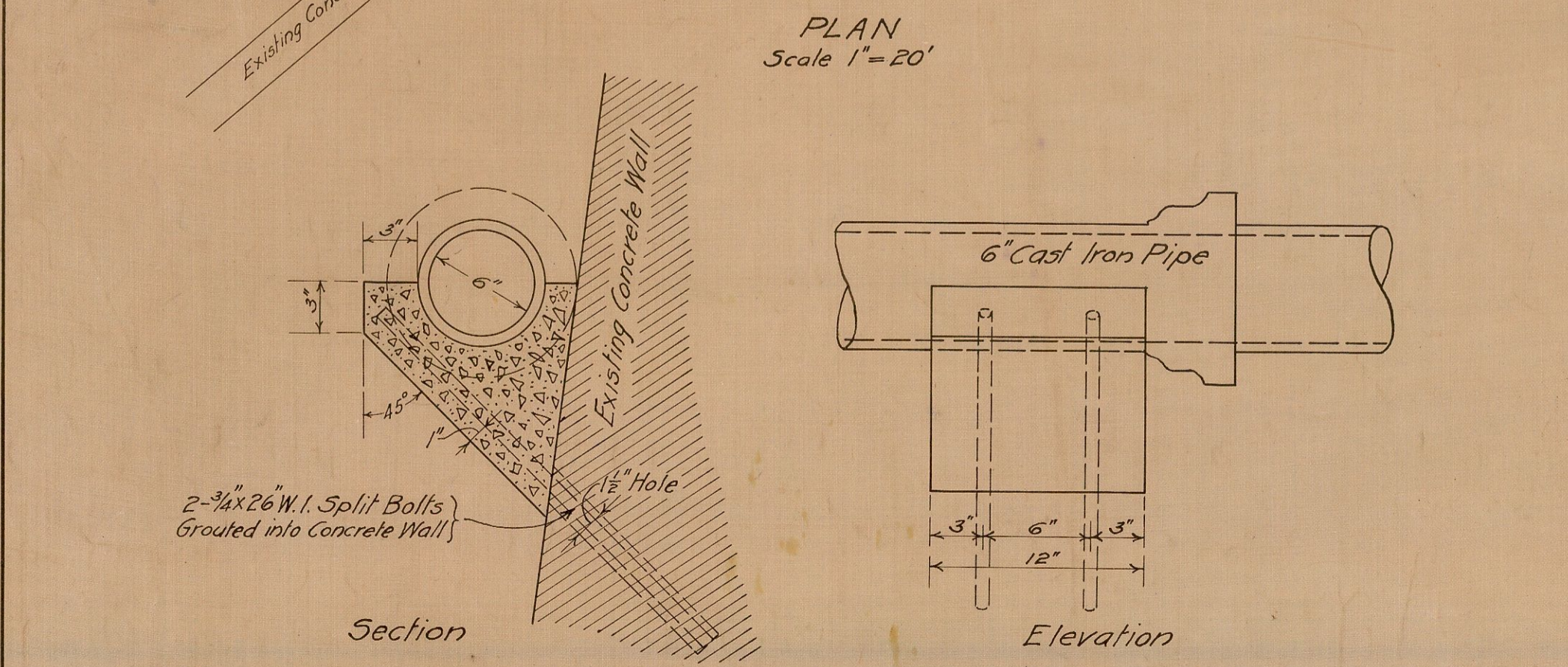
00 City Datum
 -1.77 " " Extreme High Tide
 -4.12 " " Mean High Water
 00 U.S.G.S. = -6.12 " " Mean Sea Level
 -8.03 " " Mean Low Water
 -11.14 " " Extreme Low Tide



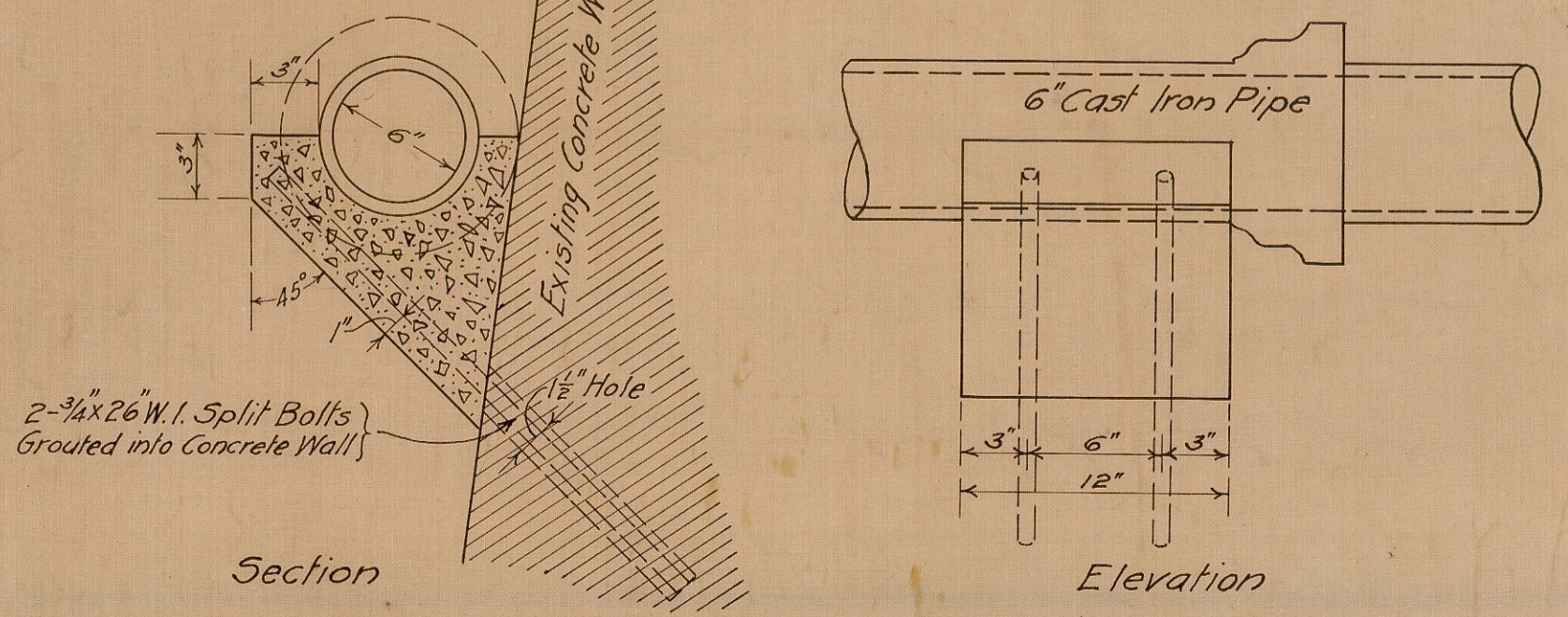
PROFILE — OUTFALL SEWER
 16" C.I. PIPE
 Scale 1" = 10'



ELEVATION
 Scale 1" = 20'

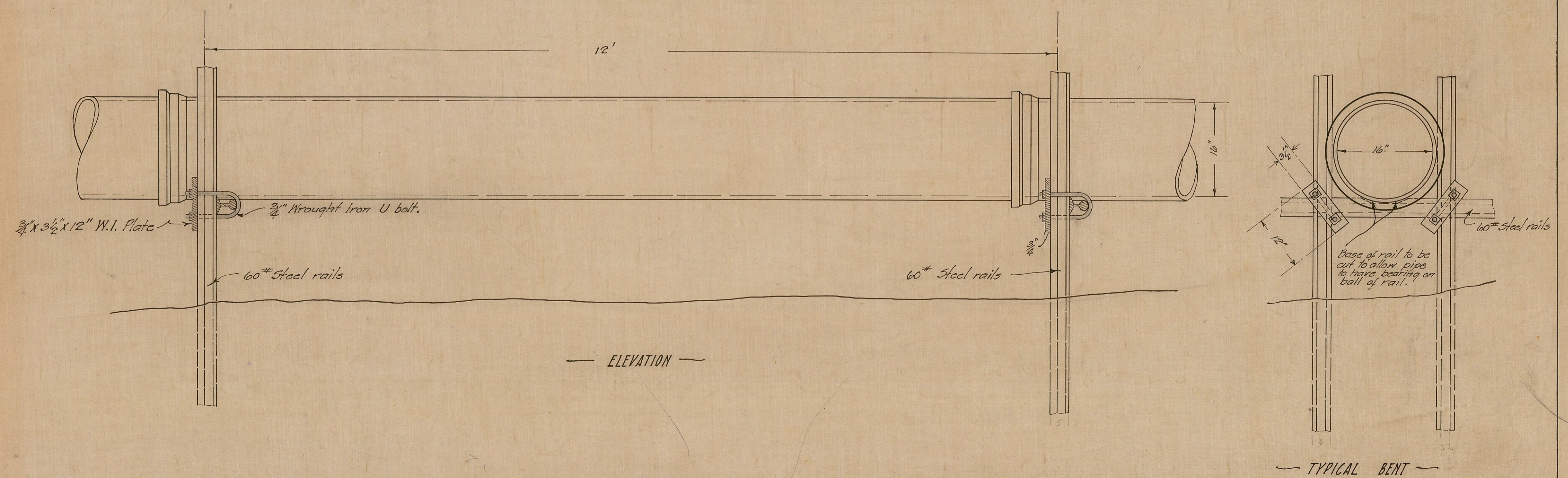


PLAN
 Scale 1" = 20'



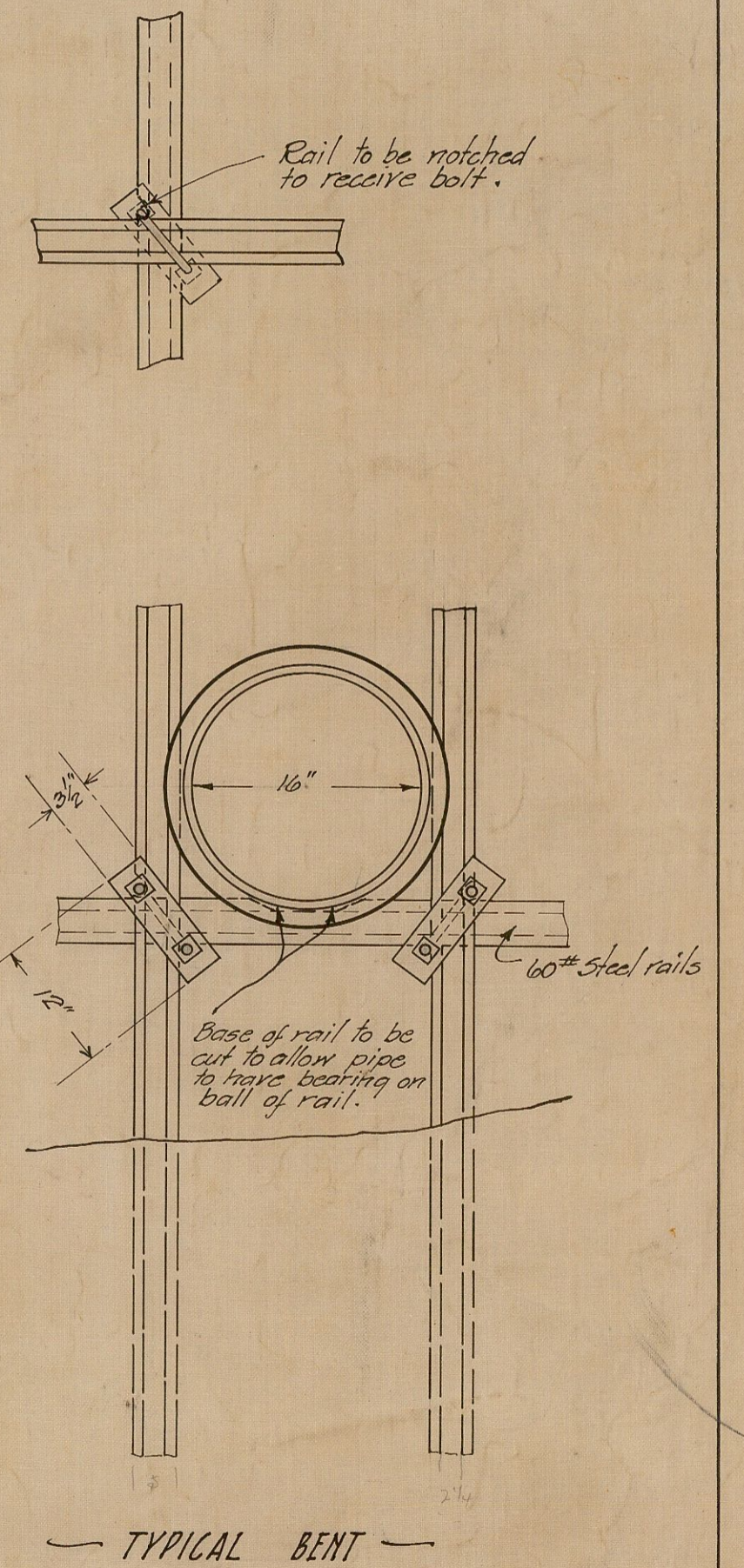
DETAILS OF CONCRETE BRACKETS
 Scale 1 1/2" = 1'

Details of
 6" Sewer in Abbott St. South from the
 Manhole in the Center of Newport Ave.



ELEVATION

DETAILS OF PIPE SUPPORT FOR OUTFALL
 Scale 1" = 1'



TYPICAL BENT

CITY OF SAN DIEGO OPERATING DEPARTMENT		Sheet 20
PLANS FOR SEWERAGE SYSTEM FOR OCEAN BEACH DISTRICT		
DESIGNED BY M. J. Lockwood	CITY ENGINEER George Cromwell	DATE Mch. 1917
DRAWN BY	SCALE As shown	DRAWING NUMBER 151 D
FIELD BOOK	CHANGED DATE	BY

Olmsted & Gillette - Consulting Engineers