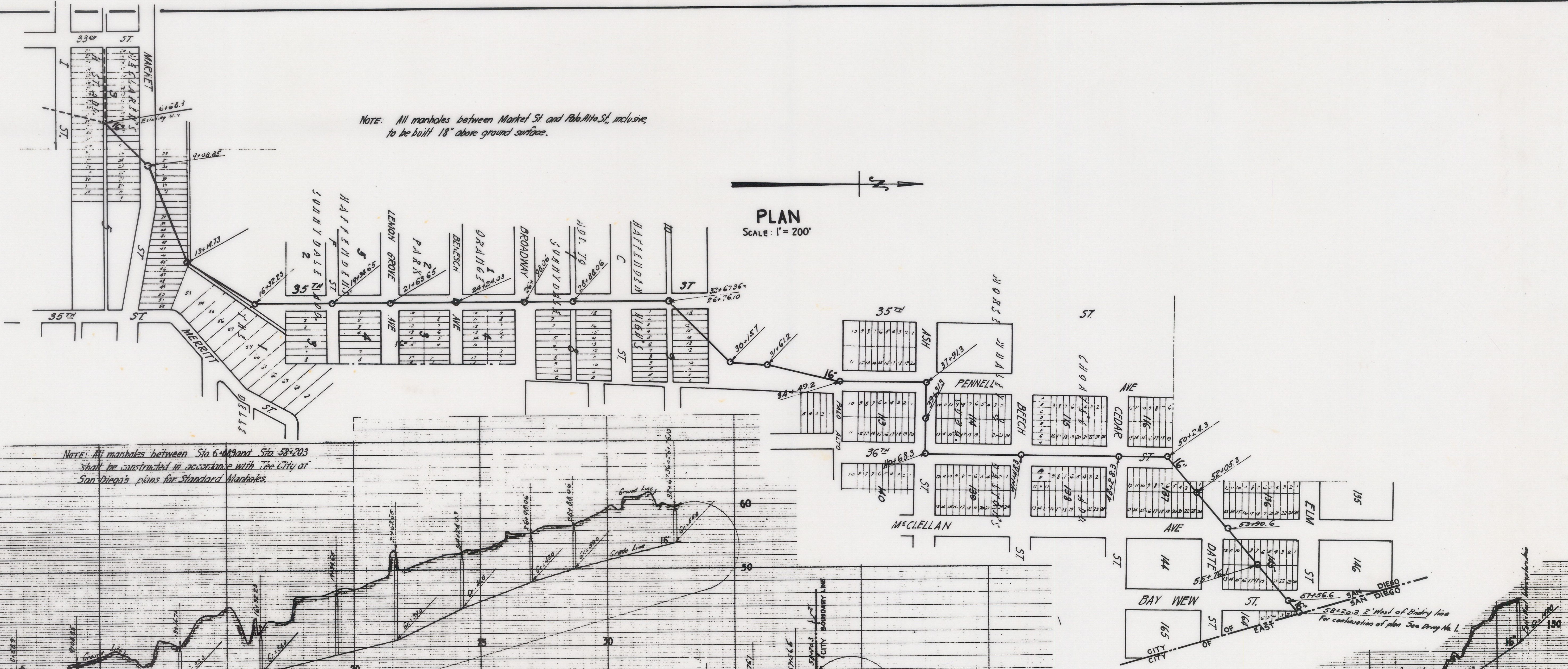


NOTE: All manholes between Market St. and Fab Alta St. inclusive, to be built 18" above ground surface.

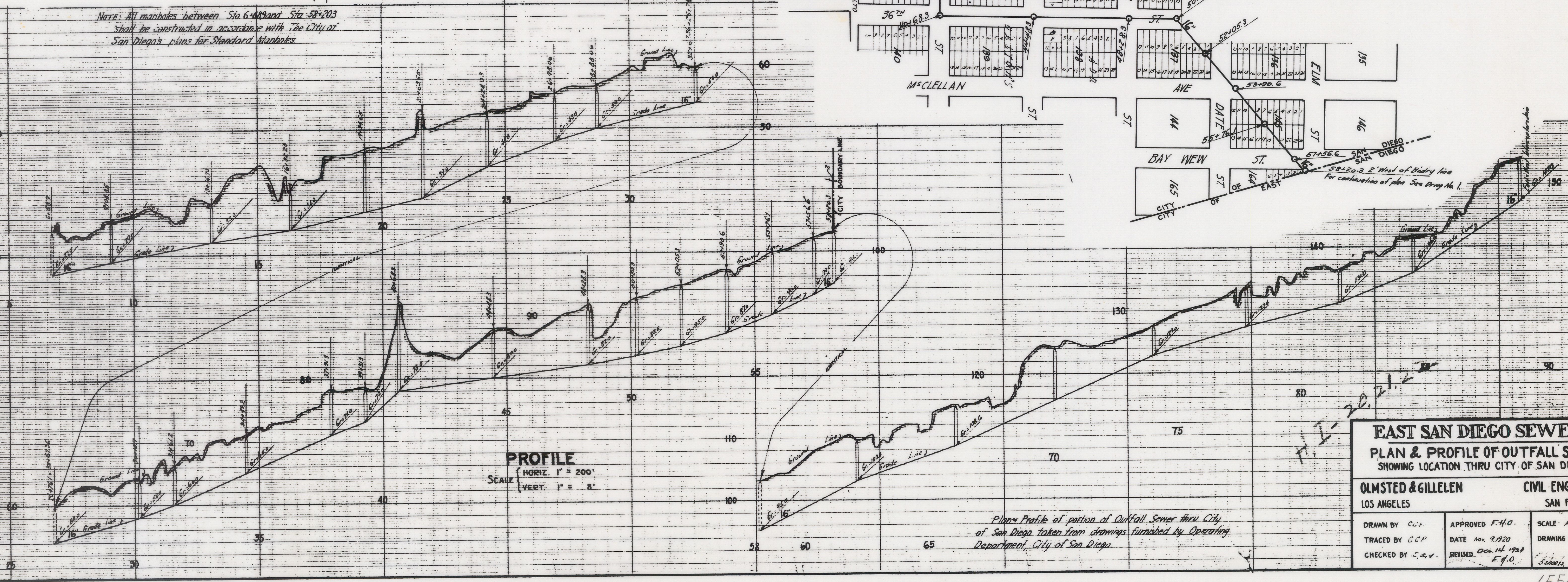


PLAN
SCALE: 1" = 200'



NOTE: All manholes between Sta 6+08.8 and Sta 58+20.3 shall be constructed in accordance with the City of San Diego's plans for Standard Manholes.

PROFILE
SCALE: HORIZ. 1" = 200'
VERT. 1" = 8'



Plan & Profile of portion of Outfall Sewer thru City of San Diego taken from drawings furnished by Operating Department, City of San Diego.

EAST SAN DIEGO SEWERS		
PLAN & PROFILE OF OUTFALL SEWER SHOWING LOCATION THRU CITY OF SAN DIEGO		
OLMSTED & GILLEN LOS ANGELES		CIVIL ENGINEERS SAN FRANCISCO
DRAWN BY C.W.	APPROVED F.H.O.	SCALE: As Shown
TRACED BY G.C.P.	DATE Nov. 9, 1920	DRAWING NO. 8
CHECKED BY C.W.	REVISED Dec. 14, 1920	5 sheets