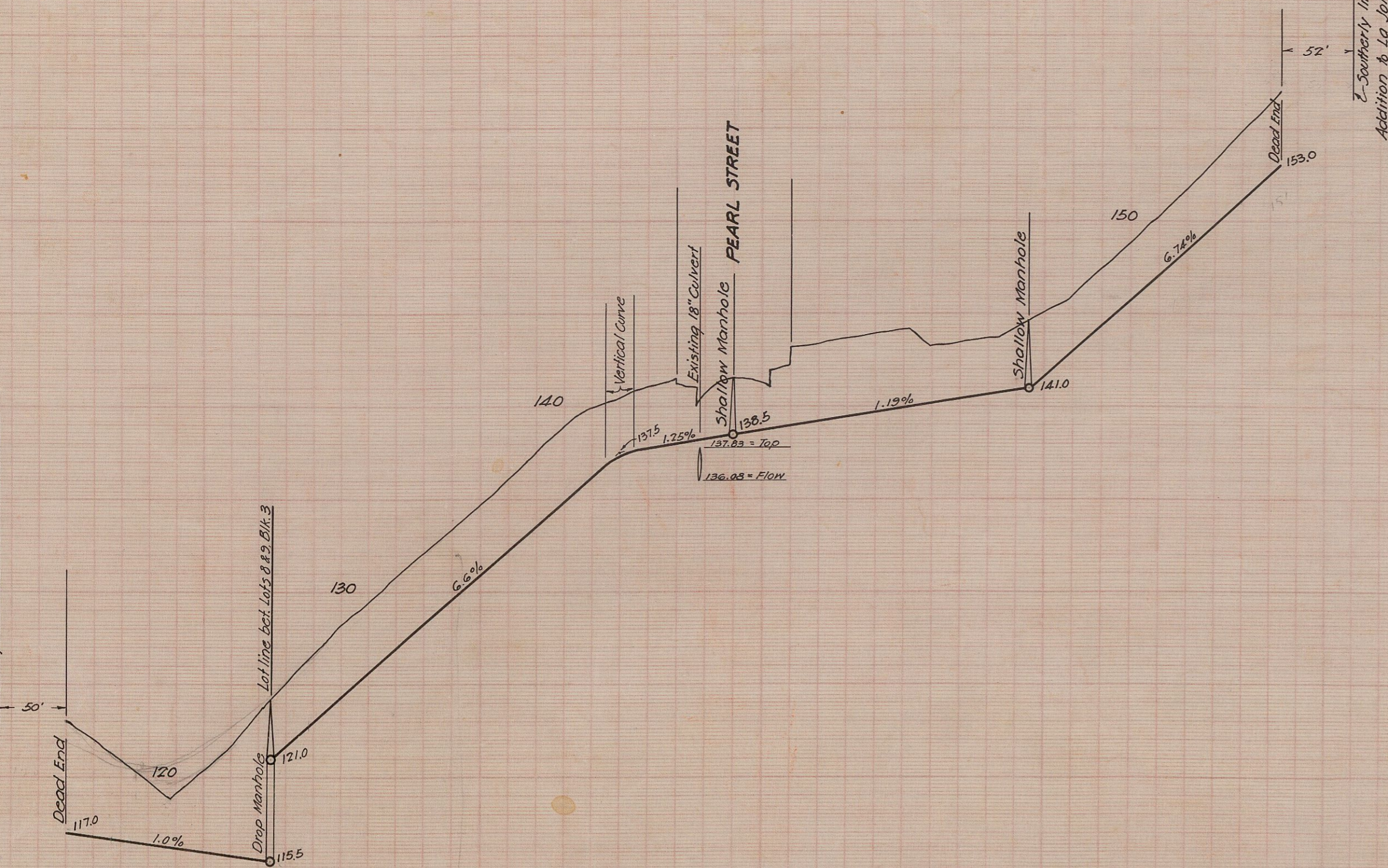
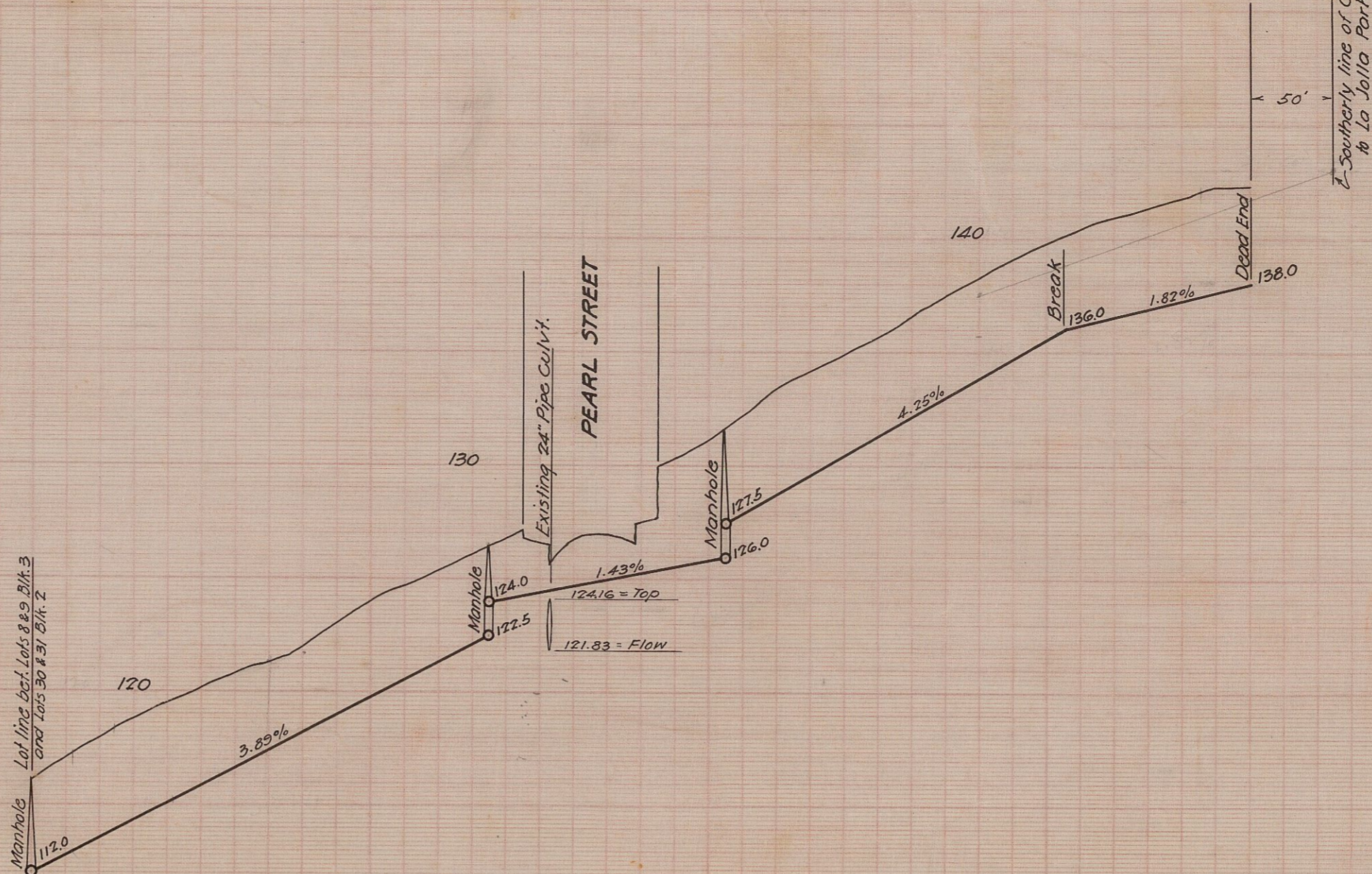


Northerly line of Center Addition to La Jolla Park



Manhole 1st 1/2' dia. 1st 1/2' dia. Blk. 3



Southerly line of Center Addition to La Jolla Park

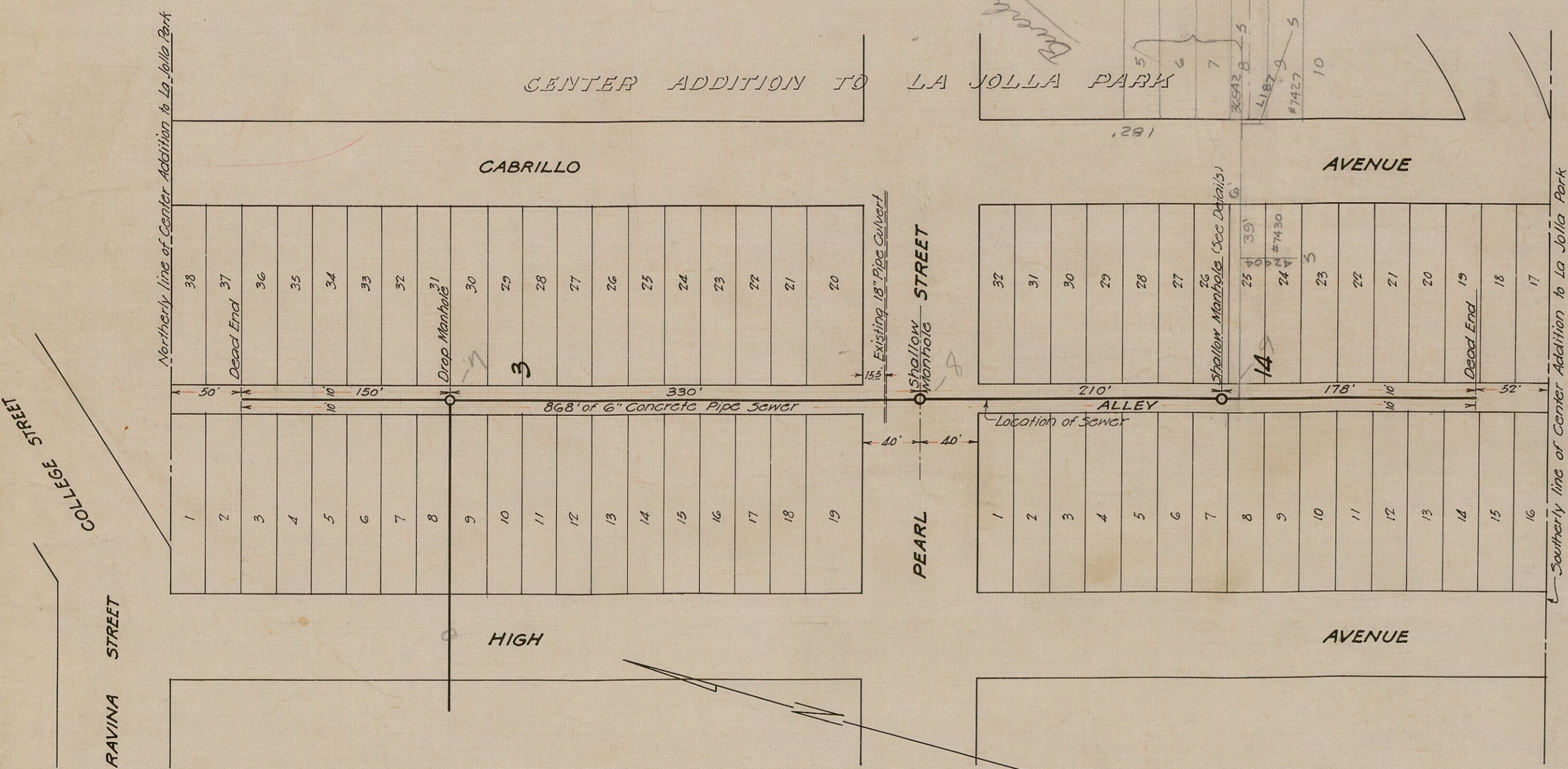
CENTER ADDITION TO LA JOLLA PARK

CABRILLO AVENUE

PEARL STREET

HIGH AVENUE

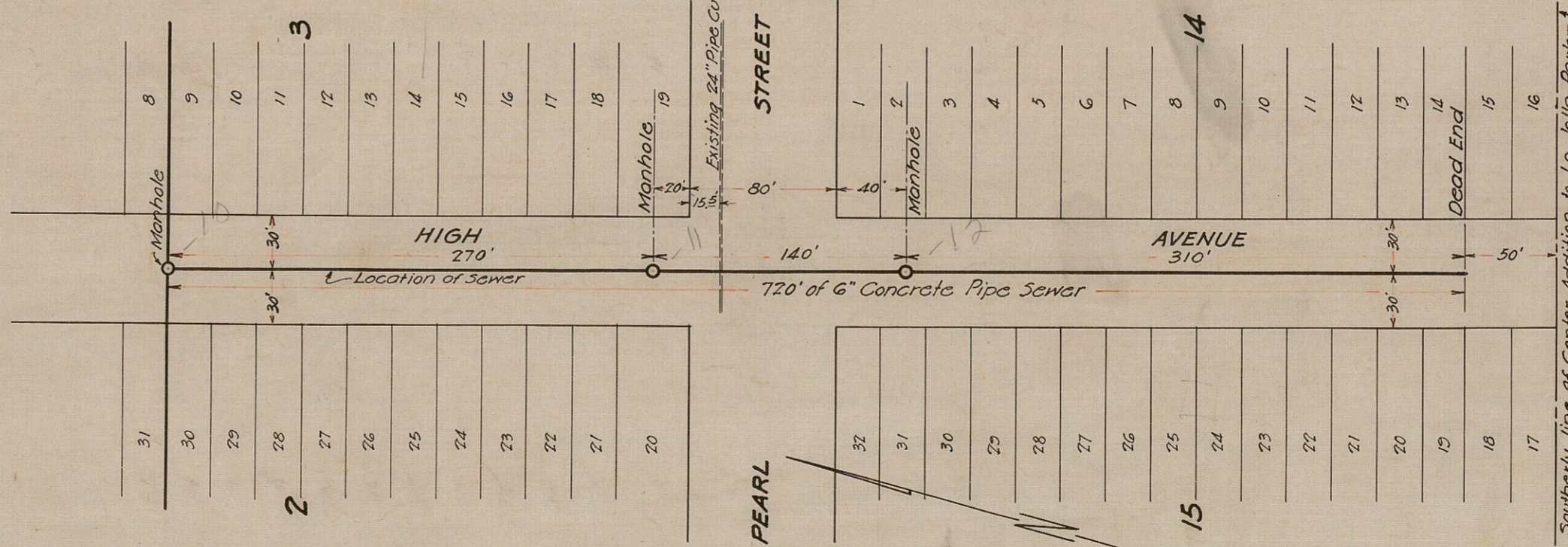
ALLEY



CENTER ADDITION TO LA JOLLA PARK

HIGH AVENUE

PEARL STREET



RAVINA STREET

COLLEGE STREET

HIGH AVENUE

ALLEY

Sewer is located on lot line between Lots 4, 5, 6, 7, 8 and Lots 20 & 31, Blk. 2

CENTER ADDITION TO LA JOLLA PARK

Cabrillo to High A-10

2 Sheets	CITY OF SAN DIEGO OPERATING DEPARTMENT	Sheet 2
Plans for the construction of SANITARY SEWERS FOR BLOCKS 1, 2, 3, 14, 15 AND 16 CENTER ADDITION TO LA JOLLA PARK		
APPROVED <i>W.D. Hodges</i> CITY ENGINEER	DATE	SCALE
DRAWN BY MICRO FILMED	DATE	O.K.
TRACED BY	CHECKED BY	FIELD WORK
DRAWING NUMBER 194 D		

JUL 16 1963