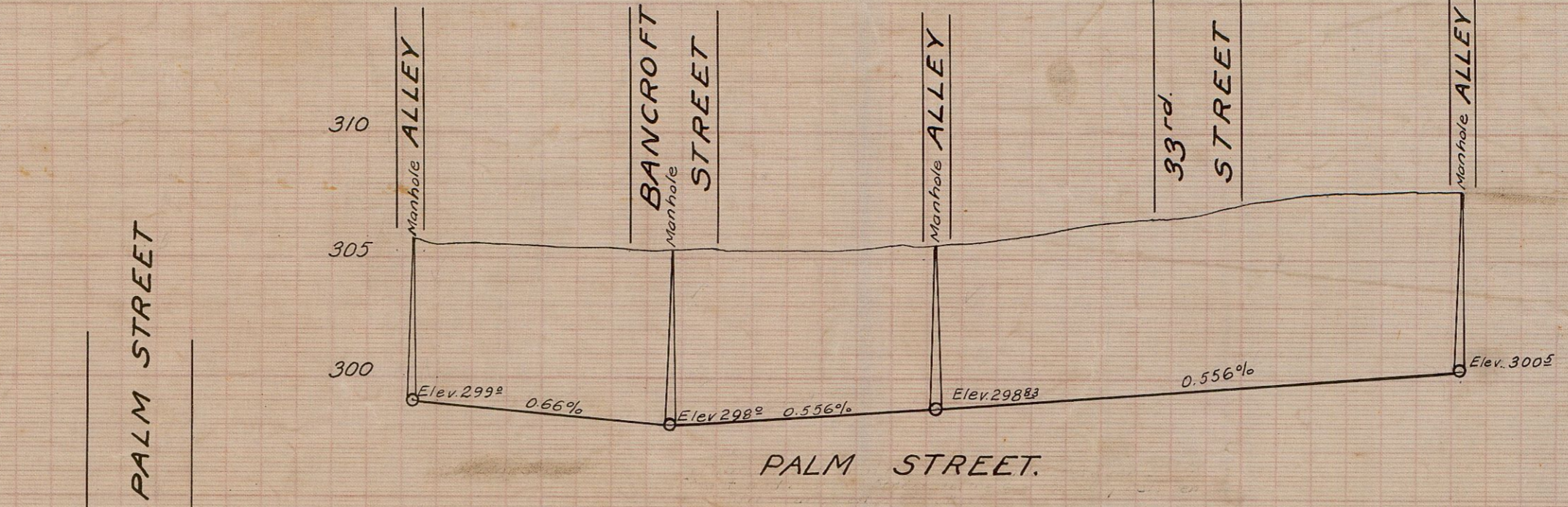


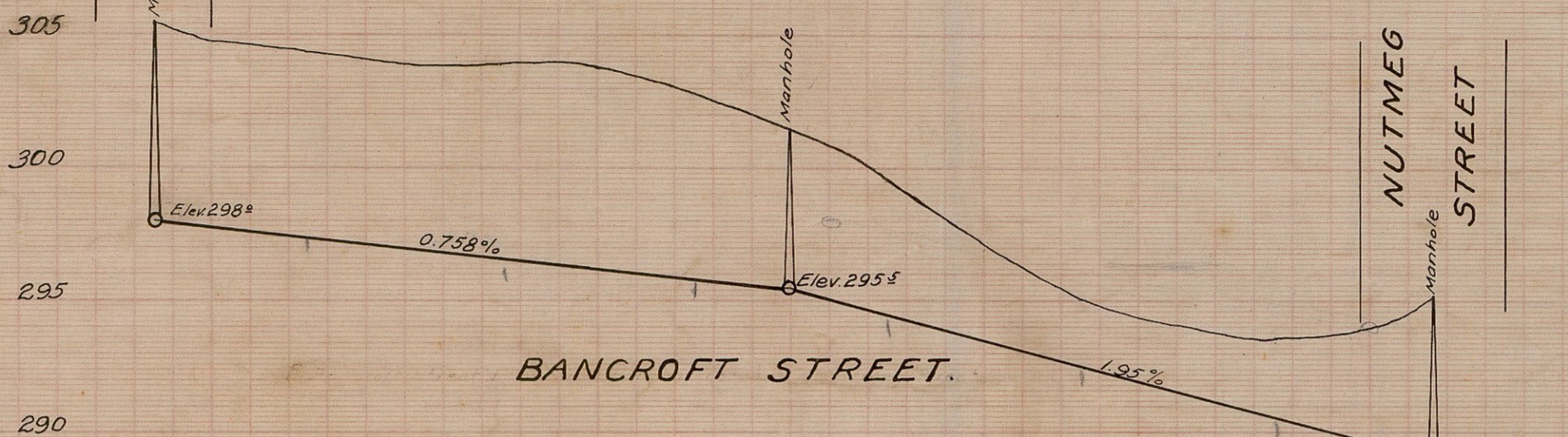
ALLEY BETWEEN 33rd AND BANCROFT STS.



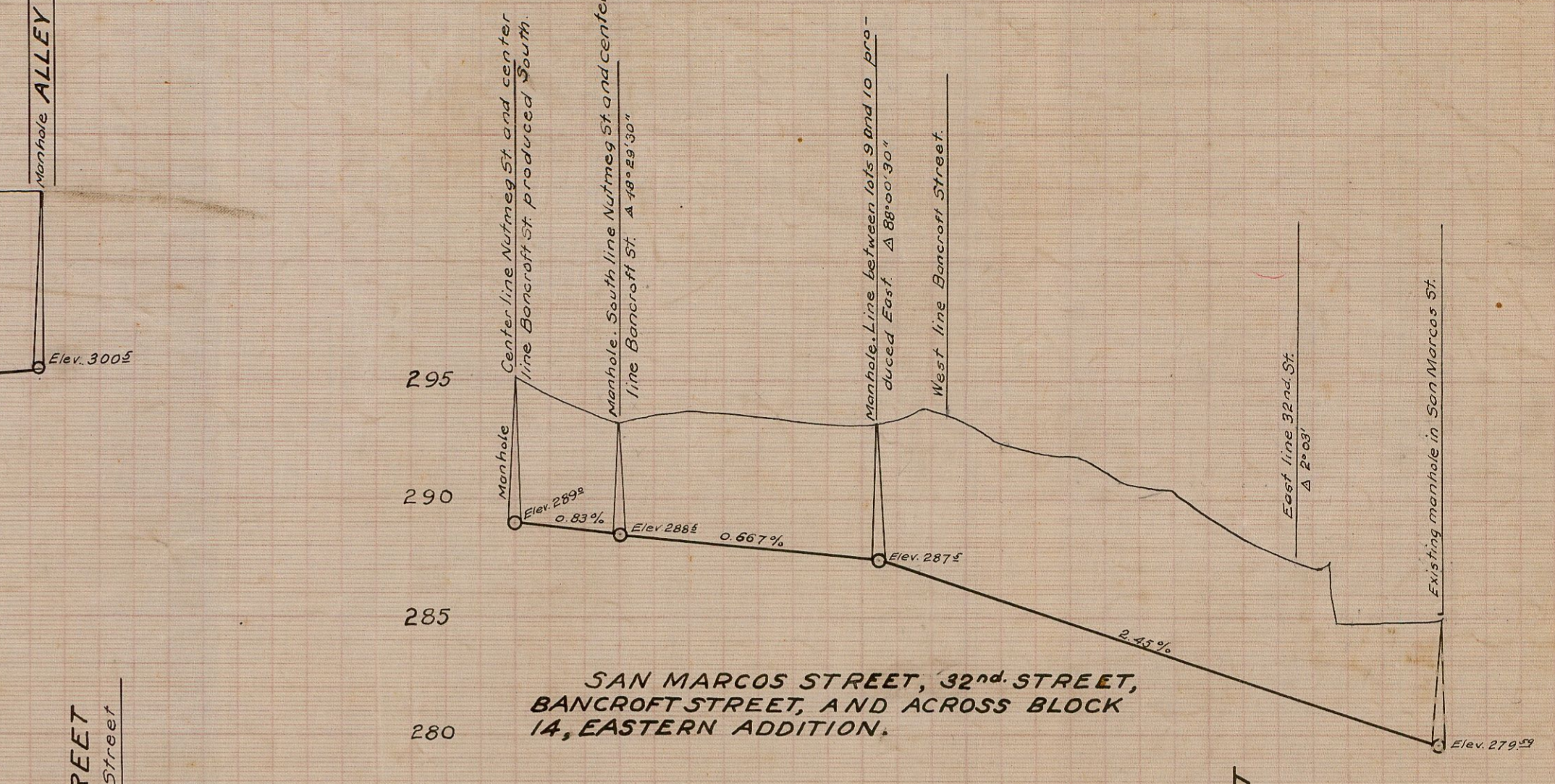
ALLEY BETWEEN 32nd AND BANCROFT STREETS.



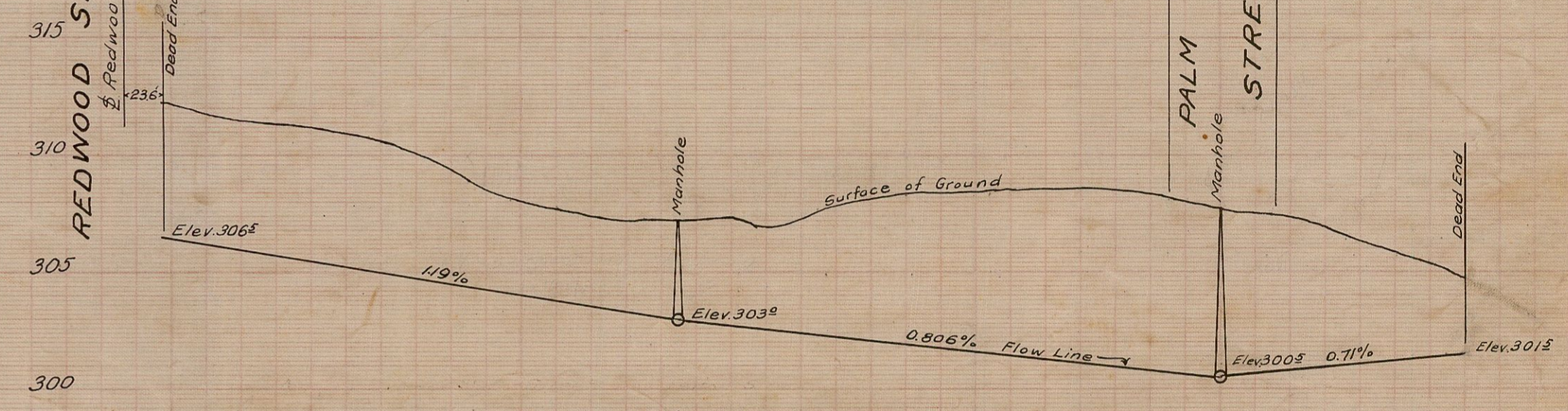
PALM STREET.



BANCROFT STREET.



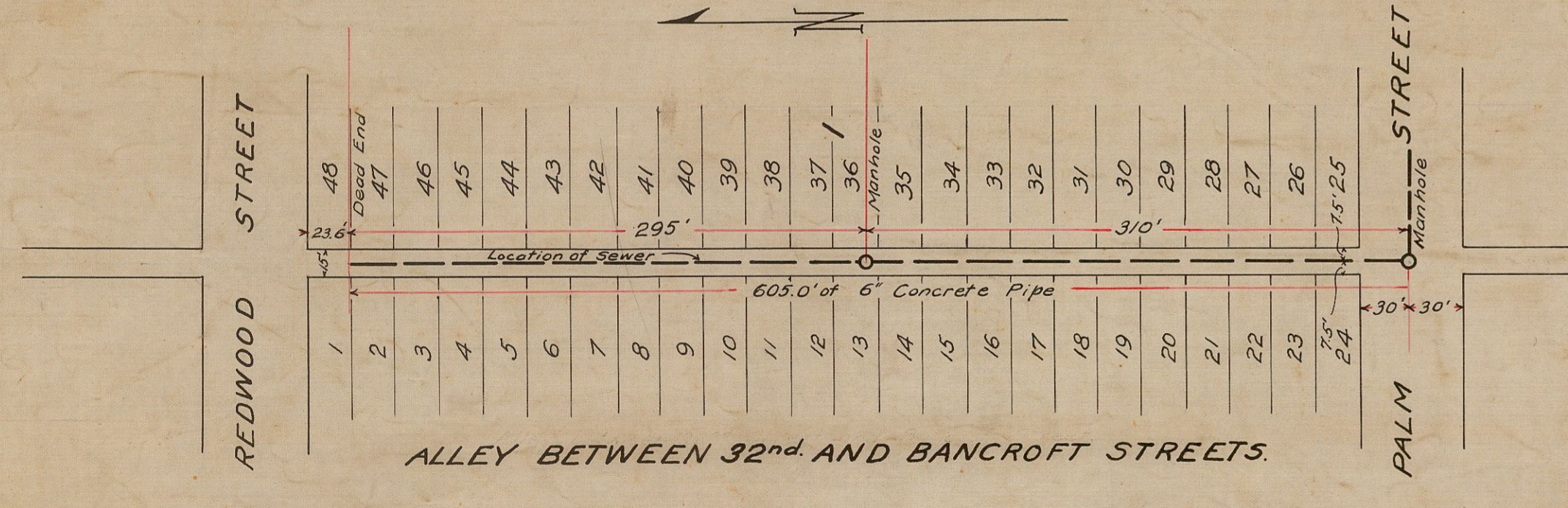
SAN MARCOS STREET, 32nd STREET, BANCROFT STREET, AND ACROSS BLOCK 14, EASTERN ADDITION.



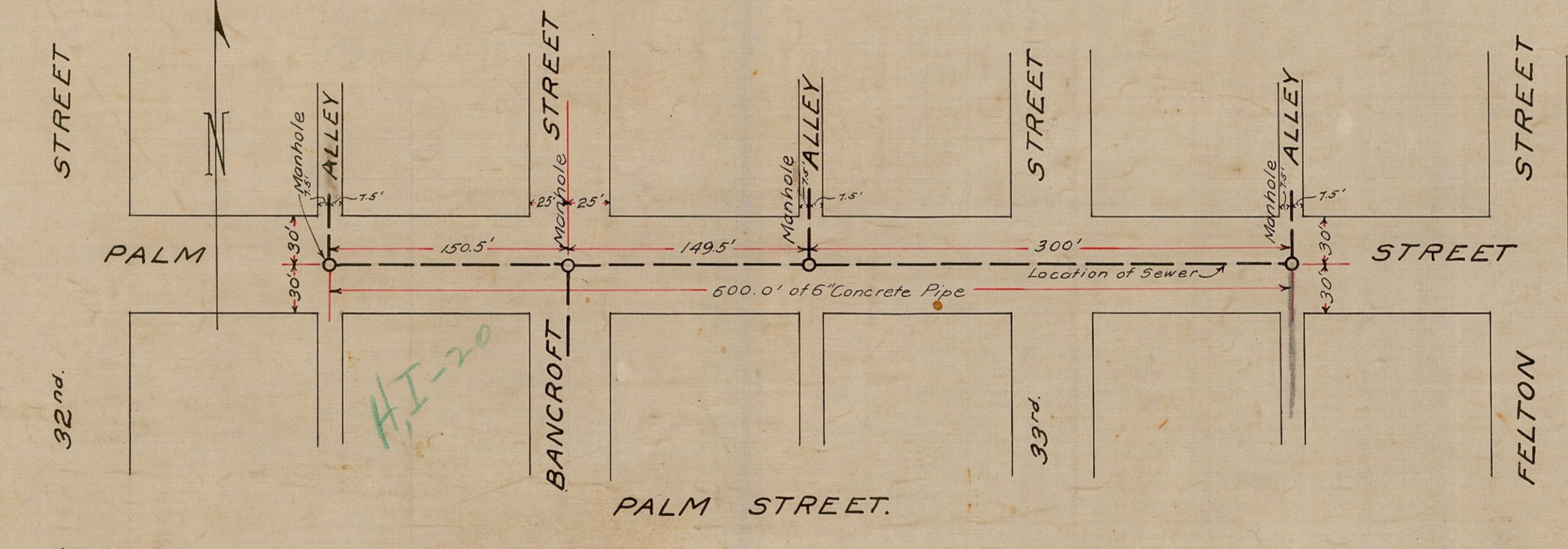
ALLEY BETWEEN 33rd AND FELTON STREETS.



ALLEY BETWEEN 33rd AND BANCROFT STREETS.



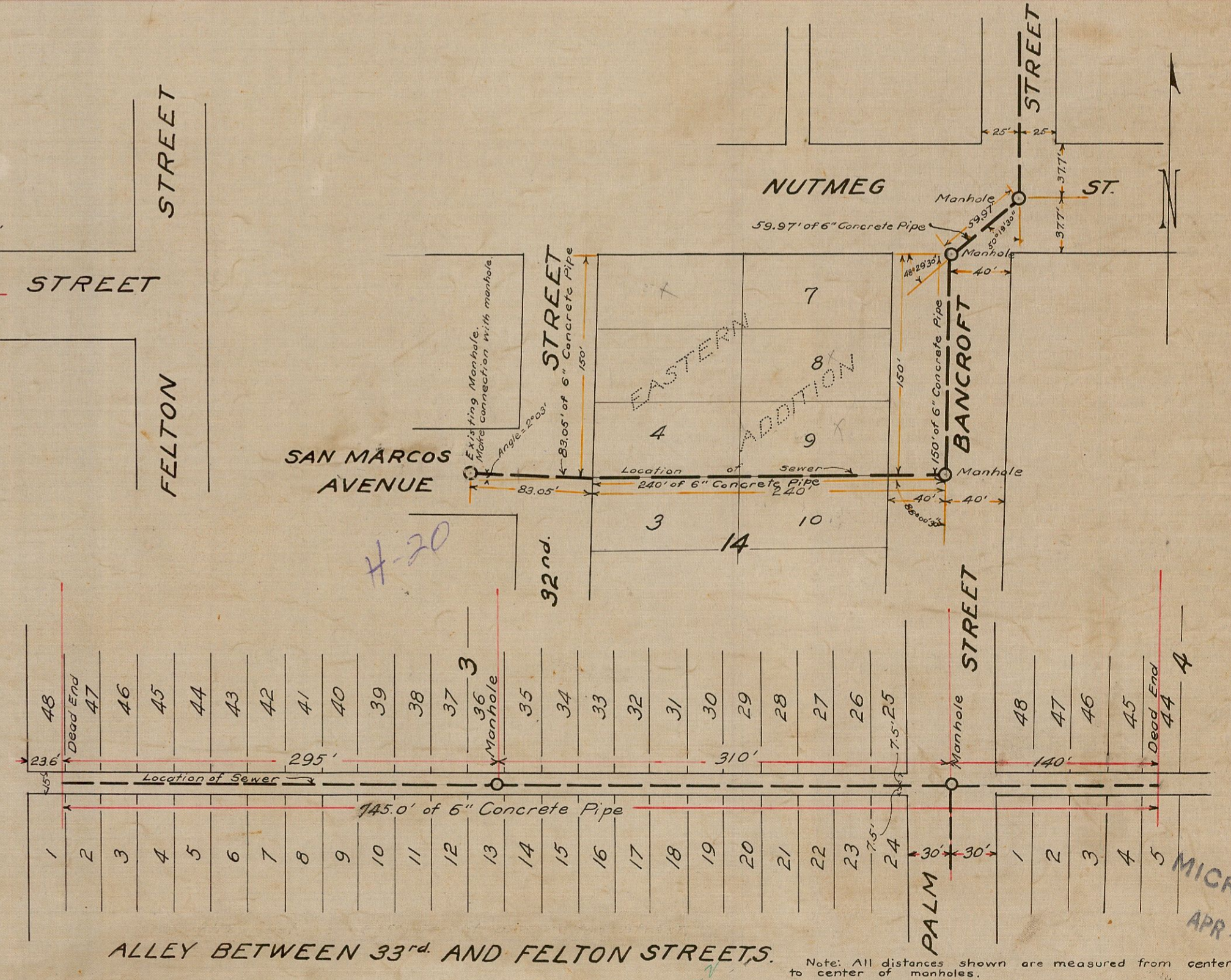
ALLEY BETWEEN 32nd AND BANCROFT STREETS.



PALM STREET.



BANCROFT STREET.



ALLEY BETWEEN 33rd AND FELTON STREETS.

Note: All distances shown are measured from center to center of manholes.

MICROFILMED
APR - - 1963

CITY OF SAN DIEGO OPERATING DEPARTMENT	
Plans for the construction of SANITARY SEWERS in SAN MARCOS AVE., 32 nd ST., BLOCK 14, EASTERN ADDITION; BANCROFT ST., PALM ST., ALLEY BETWEEN 32 nd AND BANCROFT STS.; ALLEY BETWEEN BANCROFT AND 33 rd STS.; and the ALLEY BETWEEN 33 rd AND FELTON STS.	
APPROVED <i>J.H. Rhodes</i> CITY ENGINEER	DATE: March 22, 1928.
DESIGNED BY J.H. Rhodes	SCALE: Plans, 1" = 80' Profiles, 1" = 10', 1" = 10'
DRAWN BY J.L.M.	CHANGED DATE C.R.
TRACED BY	
CHECKED BY	
FIELD BOOKS 1094, 1095	DRAWING NUMBER 202 D