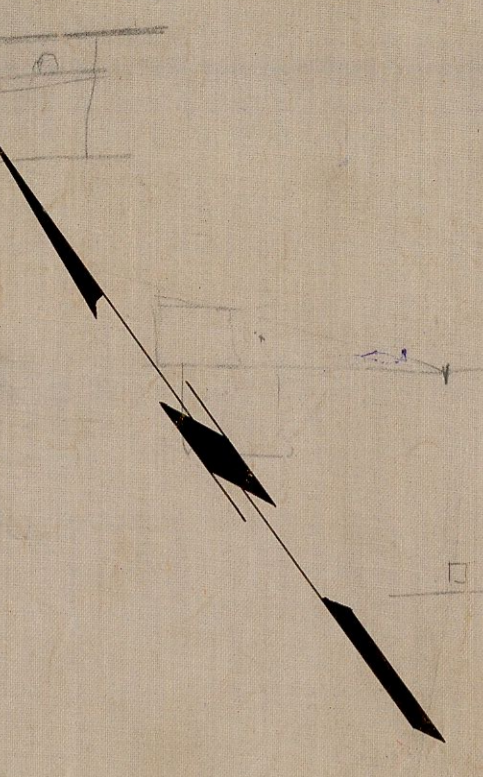


EASEMENT SHEETS

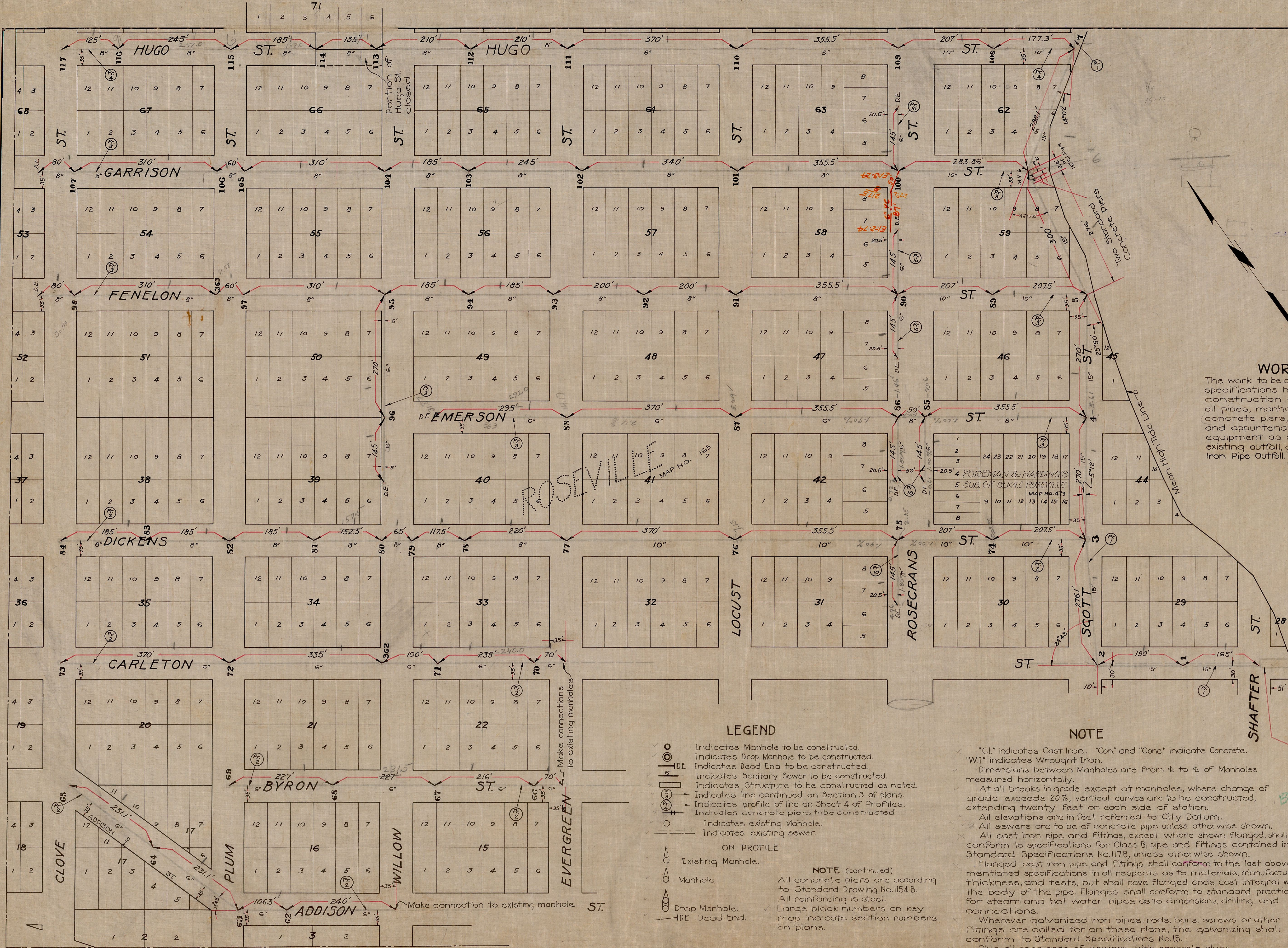
| | |
|---------|--------|
| Drawing | 768 B |
| " | 772 B |
| " | 788 B |
| " | 801 B |
| " | 802 B |
| " | 803 B |
| " | 1055 B |
| " | 1464 B |
| " | 1508 B |



WORK TO BE DONE

The work to be done according to these plans and the specifications hereto attached, consists of the construction of a sanitary sewer system including all pipes, manholes, drop manholes, dead ends, concrete piers, settling tank, pumping plant, and appurtenances, all complete, including equipment as shown, and the lowering of the existing outfall, and the construction of a 10" Wrought Iron Pipe Outfall.

SEE SHEET NO. 30 FOR PLAN AND PROFILE OF OUTFALL.



LEGEND

- Indicates Manhole.
 - with 'M' inside Indicates Drop Manhole to be constructed.
 - with 'D.E.' inside Indicates Dead End to be constructed.
 - with 'S' inside Indicates Sanitary Sewer to be constructed.
 - with 'S' and 'S' inside Indicates Structure to be constructed as noted.
 - with 'S' and 'S' and 'S' inside Indicates line continued on Section 3 of plans.
 - with 'S' and 'S' and 'S' and 'S' inside Indicates profile of line on Sheet 4 of Profiles.
 - with 'S' and 'S' and 'S' and 'S' and 'S' inside Indicates concrete piers to be constructed.
 - with 'S' and 'S' and 'S' and 'S' and 'S' and 'S' inside Indicates existing Manhole.
 - with 'S' and 'S' and 'S' and 'S' and 'S' and 'S' and 'S' inside Indicates existing sewer.
- ON PROFILE**
- Existing Manhole.
 - Manhole.
 - Drop Manhole.
 - D.E. Dead End.

NOTE (continued)

All concrete piers are according to Standard Drawing No. 1154 B. All reinforcing is steel.

Large block numbers on key map indicate section numbers on plans.

NOTE

- × "C.I." indicates Cast Iron. "Con." and "Conc." indicate Concrete.
- × "W.I." indicates Wrought Iron.
- × Dimensions between Manholes are from ϵ to ϵ of Manholes measured horizontally.
- × At all breaks in grade except at manholes, where change of grade exceeds 20%, vertical curves are to be constructed, extending twenty feet on each side of station.
- × All elevations are in feet referred to City Datum.
- × All sewers are to be of concrete pipe unless otherwise shown.
- × All cast iron pipe and fittings, except where shown flanged, shall conform to specifications for Class B pipe and fittings contained in Standard Specifications No. 117B, unless otherwise shown.
- × Flanged cast iron pipe and fittings shall conform to the last above mentioned specifications in all respects as to materials, manufacture, thickness, and tests, but shall have flanged ends cast integral with the body of the pipe. Flanges shall conform to standard practice for steam and hot water pipes as to dimensions, drilling, and connections.
- × Wherever galvanized iron pipes, rods, bars, screws or other fittings are called for on these plans, the galvanizing shall conform to Standard Specifications No. 15.
- × Plug all open ends of sewers with concrete plugs.

PLAN-SECTION I

| | | |
|--|--|--------------------------------|
| Sheet 2 | CITY OF SAN DIEGO OPERATING DEPARTMENT | 34 Sheets |
| PLANS FOR THE CONSTRUCTION OF A SANITARY SEWER SYSTEM FOR POINT LOMA DISTRICT | | |
| APPROVED | <i>[Signature]</i> CITY ENGINEER MSE. OF OPERATION | DATE 7-25-29 SCALE 1"=100' |
| DRAWN BY Schmach TRACED BY H.C. B. CHECKED BY B.J.P. FIELD BOOKS | CHANGED DATE O.K. | DRAWING NUMBER 466 D |