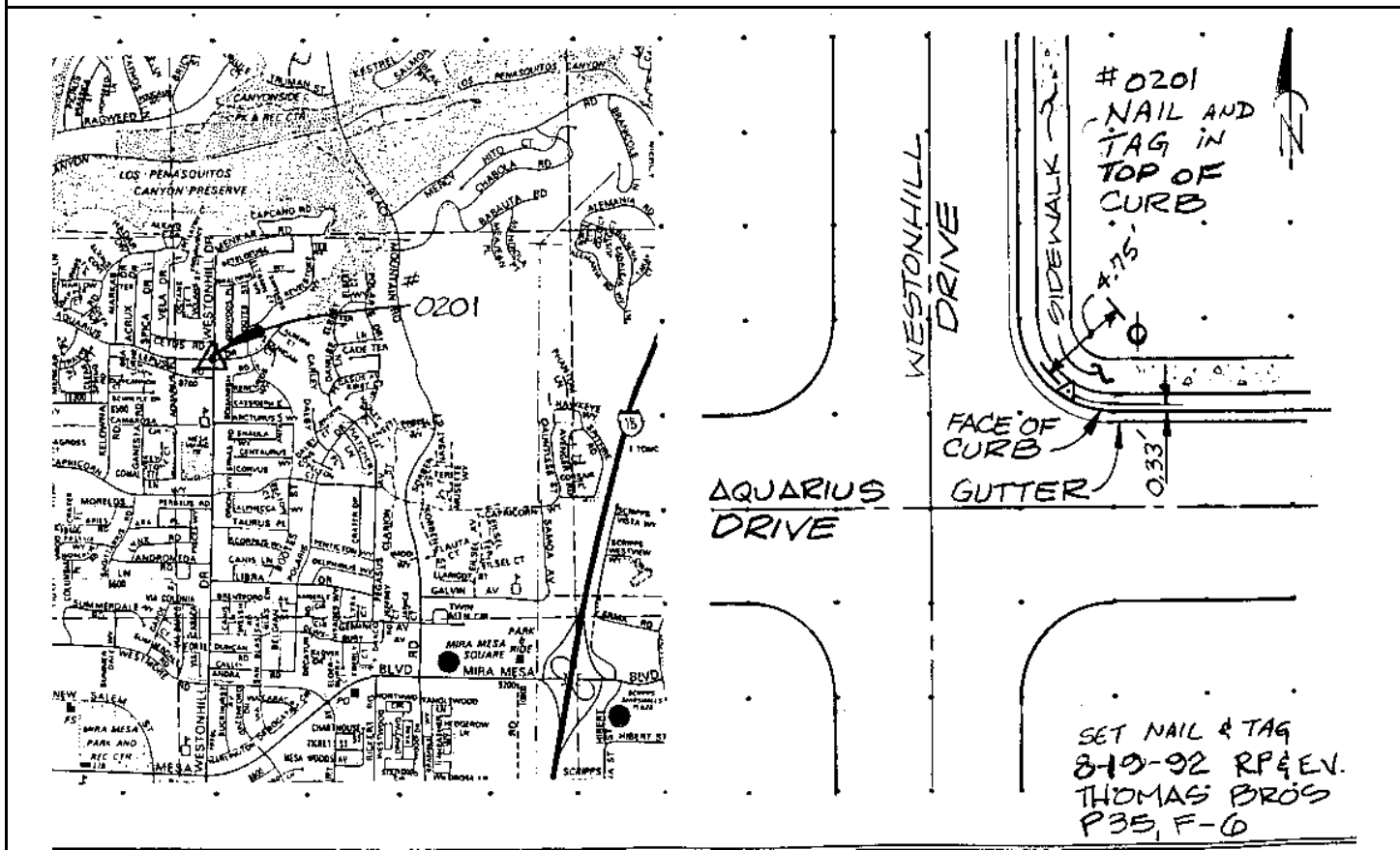


CITY OF SAN DIEGO

GPS CONTROL MONUMENT DATA SHEET

Point No./Name: 201		Date: AUG 1992	See Sheet 2 for Visibility Diagram <input type="checkbox"/>
Station/Mon. Name: WESTONHILL/AQUARIUS		Year: AUG 1992	Agency Set By: KERCHEVAL
Type of Monument: SET LEAD & BRASS DISK IN CONC CURB Stamped: CITY SD ENG		Latitude: 32-55-48.05355 Longitude: 117-08-07.82132	NAD 83 (91.35)
Elevation 133.540 * NAVD 88 (meters) Elevation 435.98 * NGVD 29 (feet) * Note: Not to be used as a City benchmark		Acc.Horiz.: 1 Order	
Acc. Vert.: NAVD88: GPS 2-II NGVD29: GPS 3-I		CCS Zone 6 Grid Coordinates NAD 83 (U.S. Feet) NAD 83 (Meters) N= 1919316.75 N= 585008.915 E= 6289961.51 E= 1917184.102	
ROS: <input type="checkbox"/> ROS Number:		Combined Factor at Station: 0.9999632	
To Station	Grid Distance	Bearing or Azimuth	G.S.F. of Line

Monument Description: NE CORNER OF WESTONHILL DR & AQUARIUS DR



Reproduced with permission granted by THOMAS BROS. MAPS. This map is copyrighted by THOMAS BROS. MAPS. It is unlawful to copy or reproduce all or any part thereof, whether for personal use or resale, without permission.