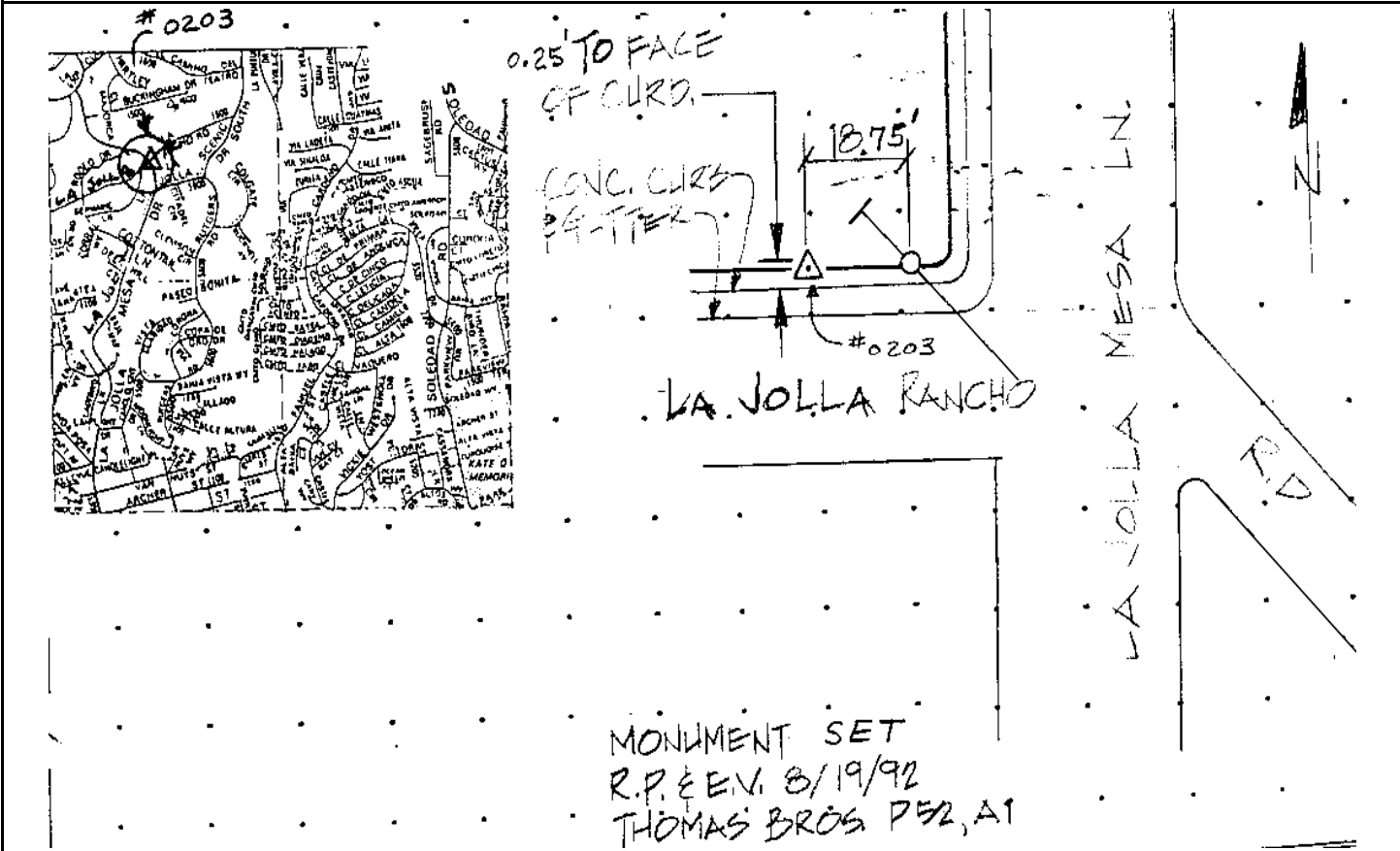


CITY OF SAN DIEGO

GPS CONTROL MONUMENT DATA SHEET

Point No./Name: 203	Date: AUG 1992	See Sheet 2 for Visibility Diagram <input type="checkbox"/>
Station/Mon. Name: LJ RANCHO/LJ MESA	Year: AUG 1992	Agency Set By: KERCHEVAL
Type of Monument: SET LEAD & BRASS DISK IN CONC CURB Stamped: CITY SD ENG	Latitude: 32-49-30.73417 Longitude: 117-15-31.15011	NAD 83 (91.35)
Elevation 167.126 * NAVD 88 (meters) Elevation 546.07 * NGVD 29 (feet) * Note: Not to be used as a City benchmark	Acc.Horiz.: 1 Order	
Acc. Vert.: NAVD88: GPS 2-II NGVD29: GPS 3-I	CCS Zone 6 Grid Coordinates NAD 83 (U.S. Feet) NAD 83 (Meters) N= 1881526.64 N= 573490.466 E= 6251807.80 E= 1905554.829	
ROS: <input type="checkbox"/> ROS Number:	Combined Factor at Station: 0.9999725	
To Station	Grid Distance	Bearing or Azimuth

Monument Description: N SIDE OF LA JOLLA RANCHO RD W OF LA JOLLA MESA LN



Reproduced with permission granted by THOMAS BROS. MAPS. This map is copyrighted by THOMAS BROS. MAPS. It is unlawful to copy or reproduce all or any part thereof, whether for personal use or resale, without permission.