

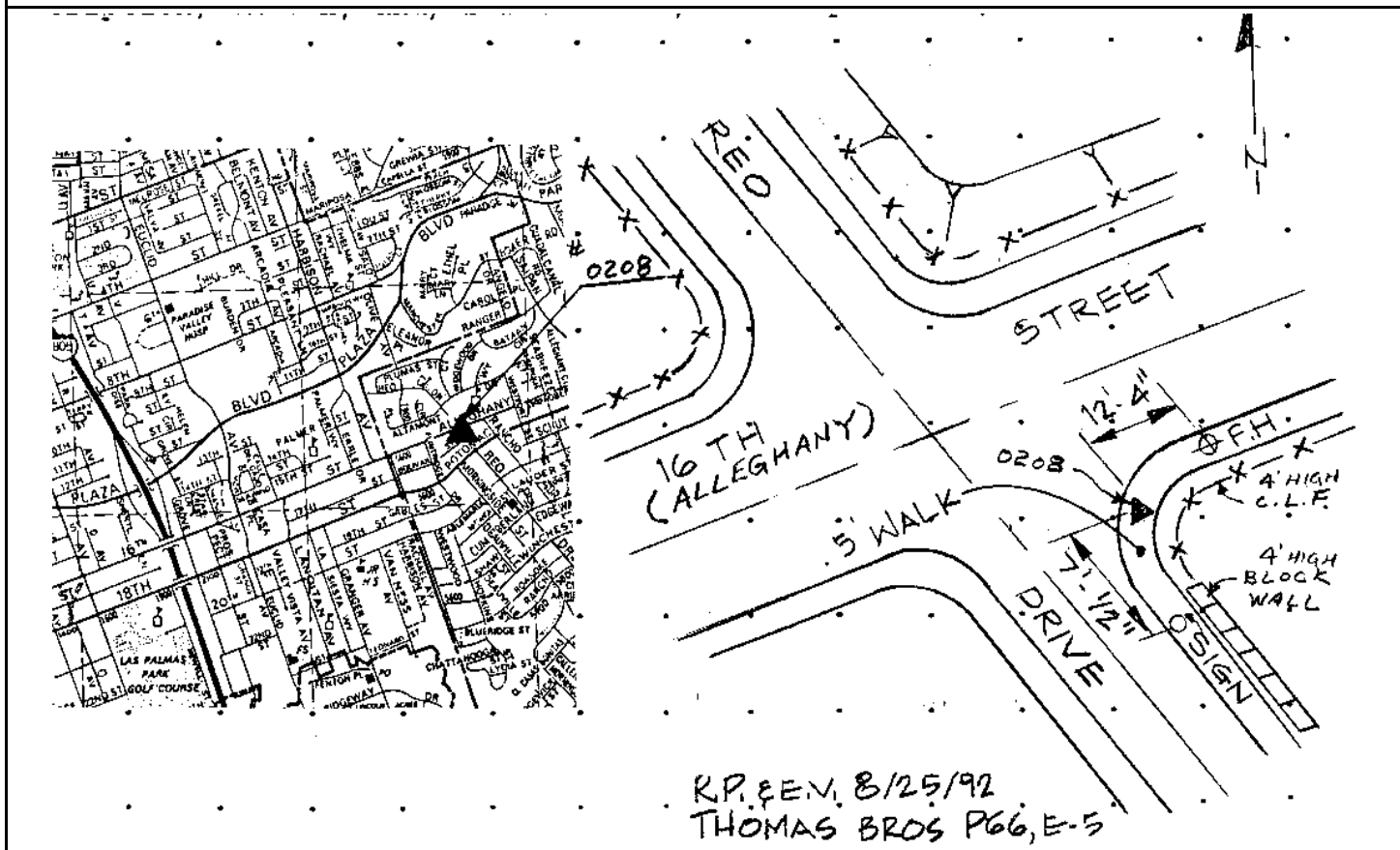
CITY OF SAN DIEGO

GPS CONTROL MONUMENT DATA SHEET

Point No./Name: 208	Date: AUG 1992	See Sheet 2 for Visibility Diagram <input type="checkbox"/>
Station/Mon. Name: REO/16TH	Year: UNKNOW	Agency Set By: UNKNOWN
Type of Monument: FOUND LEAD & NAIL IN CONC WALK (NO TAG) Stamped: NONE	Latitude: 32-40-44.77574 Longitude: 117-04-03.90383	NAD 83 (91.35)
Elevation 66.402 * NAVD 88 (meters) Elevation 215.73 * NGVD 29 (feet) * Note: Not to be used as a City benchmark	Acc.Horiz.: 1 Order	
Acc. Vert.: NAVD88: GPS 2-II NGVD29: GPS 3-I	CCS Zone 6 Grid Coordinates NAD 83 (U.S. Feet) NAD 83 (Meters) N= 1827856.79 N= 557131.865 E= 6310034.70 E= 1923302.423	
ROS: <input type="checkbox"/> ROS Number:	Combined Factor at Station: 1.000014	

To Station	Grid Distance	Bearing or Azimuth	G.S.F. of Line

Monument Description: SE COR OF REO DR & 16TH ST (ALLEGHANY)



Reproduced with permission granted by THOMAS BROS. MAPS. This map is copyrighted by THOMAS BROS. MAPS. It is unlawful to copy or reproduce all or any part thereof, whether for personal use or resale, without permission.