

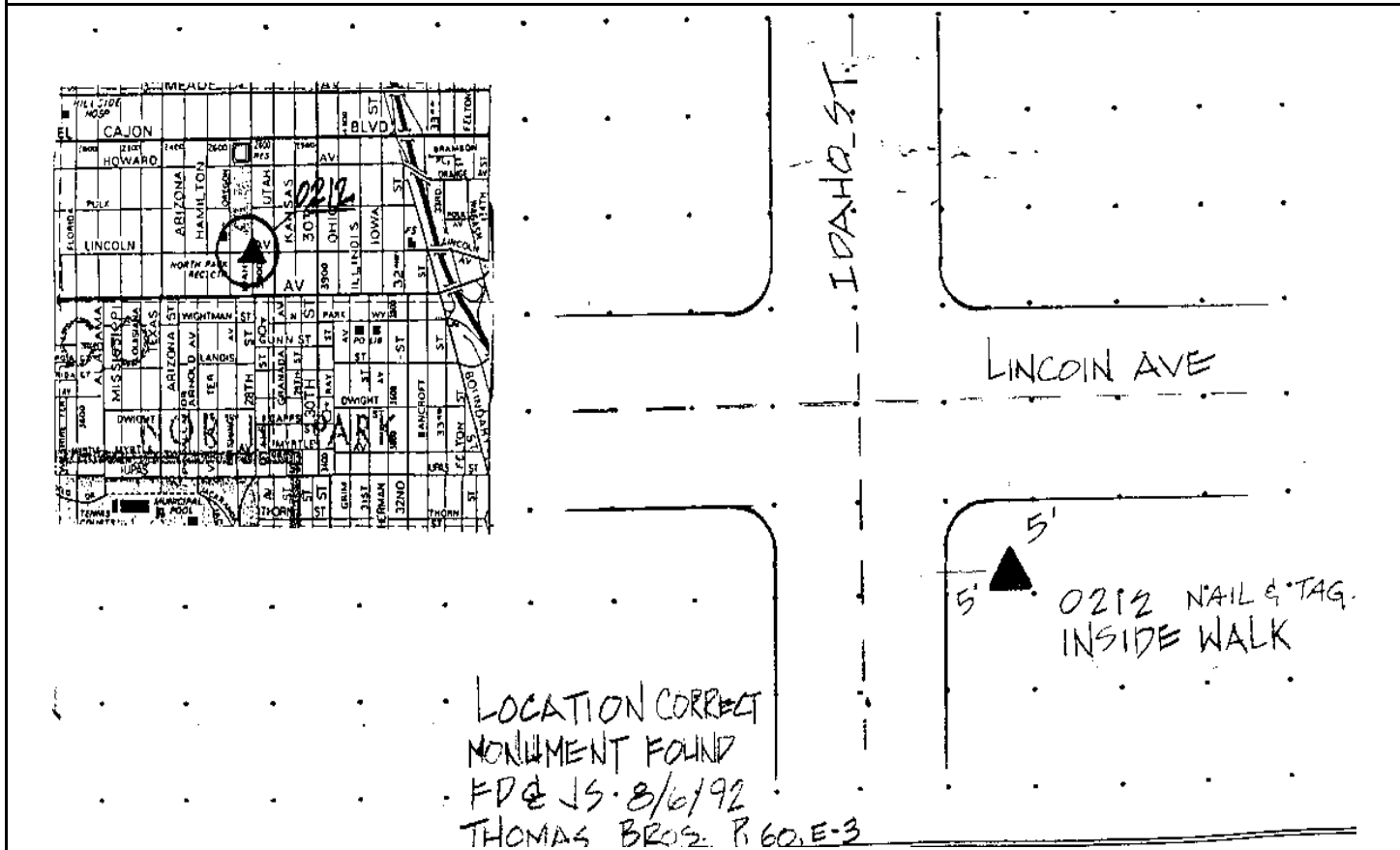
CITY OF SAN DIEGO

GPS CONTROL MONUMENT DATA SHEET

Point No./Name: 212	Date: AUG 1992	See Sheet 2 for Visibility Diagram <input type="checkbox"/>
Station/Mon. Name: IDAHO/LINCOLN	Year: UNKNOW	Agency Set By: CITY SD
Type of Monument: FOUND LEAD & BRASS DISK IN CONC WALK Stamped: CITY SD ENG	Latitude: 32-45-00.84925 Longitude: 117-08-01.51717	NAD 83 (91.35)
Elevation 112.710 * NAVD 88 (meters) Elevation 367.62 * NGVD 29 (feet) * Note: Not to be used as a City benchmark	Acc.Horiz.: 1 Order	
Acc. Vert.: NAVD88: GPS 2-II NGVD29: GPS 3-I	CCS Zone 6 Grid Coordinates NAD 83 (U.S. Feet) NAD 83 (Meters) N= 1853902.57 N= 565070.633 E= 6289944.39 E= 1917178.884	
ROS: <input type="checkbox"/> ROS Number:	Combined Factor at Station: 0.9999934	

To Station	Grid Distance	Bearing or Azimuth	G.S.F. of Line

Monument Description: SE COR OF LINCOLN AV & IDAHO ST



Reproduced with permission granted by THOMAS BROS. MAPS. This map is copyrighted by THOMAS BROS. MAPS. It is unlawful to copy or reproduce all or any part thereof, whether for personal use or resale, without permission.