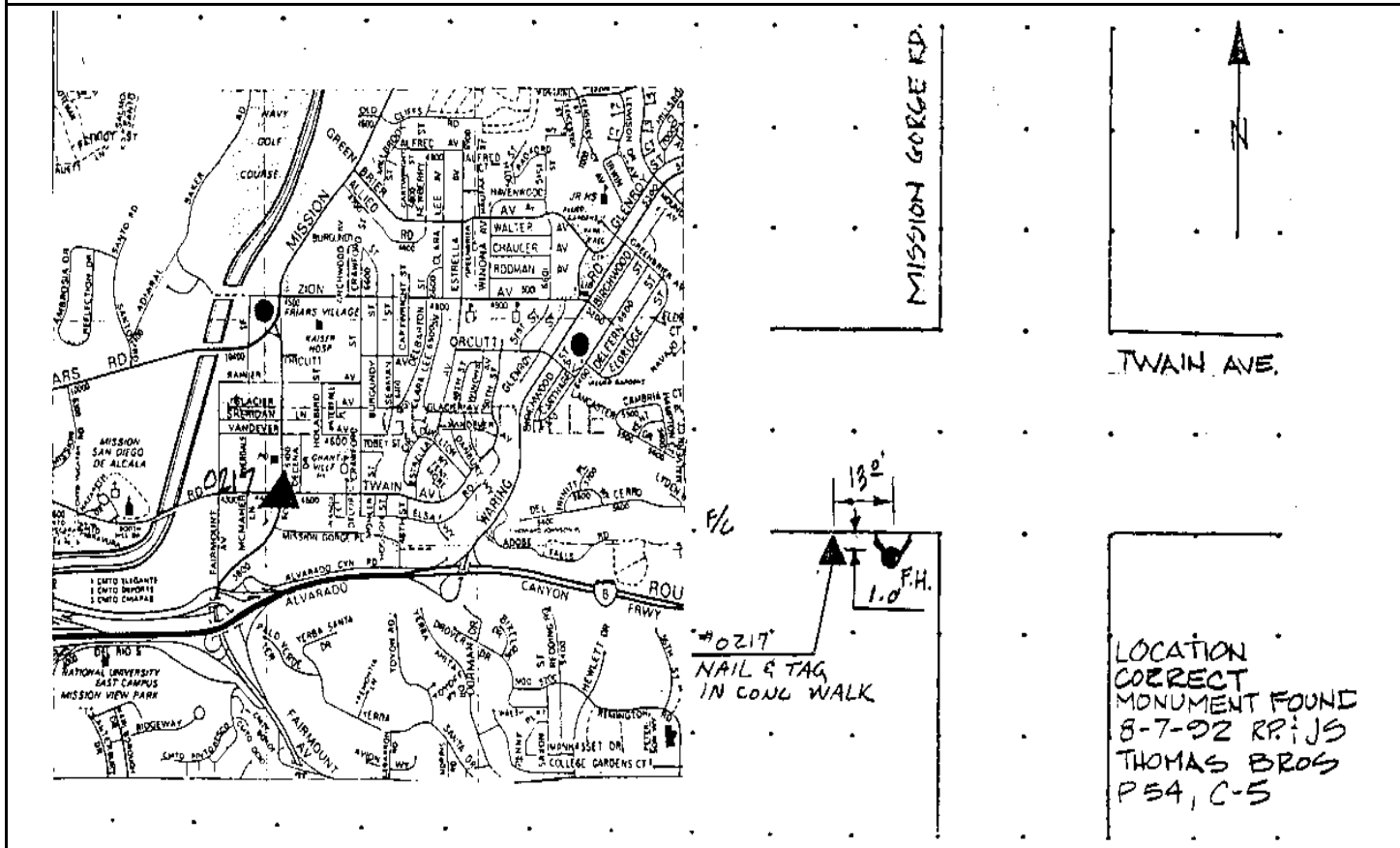


# CITY OF SAN DIEGO

# GPS CONTROL MONUMENT DATA SHEET

Point No./Name: 217		Date: AUG 1992	See Sheet 2 for Visibility Diagram <input type="checkbox"/>
Station/Mon. Name: M GORGE/TWAIN		Year: UNKNOW	Agency Set By: UNKNOWN
Type of Monument: FOUND LEAD & BRASS DISK IN CONC WALK Stamped: LS 3056		Latitude: 32-47-05.74516 Longitude: 117-05-52.67689	NAD 83 (91.35)
Elevation 25.146 * NAVD 88 (meters) Elevation 80.37 * NGVD 29 (feet) * Note: Not to be used as a City benchmark		Acc.Horiz.: 1 Order	
Acc. Vert.: NAVD88: GPS 2-II NGVD29: GPS 3-I		<b>CCS Zone 6 Grid Coordinates</b> <b>NAD 83 (U.S. Feet)      NAD 83 (Meters)</b> N= 1866433.81      N= 568890.163 E= 6301050.60      E= 1920564.063	
ROS: <input type="checkbox"/> ROS Number:		Combined Factor at Station: 1.000012	
To Station	Grid Distance	Bearing or Azimuth	G.S.F. of Line

Monument Description: SW CORNER OF TWAIN AVE & MISSION GORGE RD



Reproduced with permission granted by THOMAS BROS. MAPS. This map is copyrighted by THOMAS BROS. MAPS. It is unlawful to copy or reproduce all or any part thereof, whether for personal use or resale, without permission.