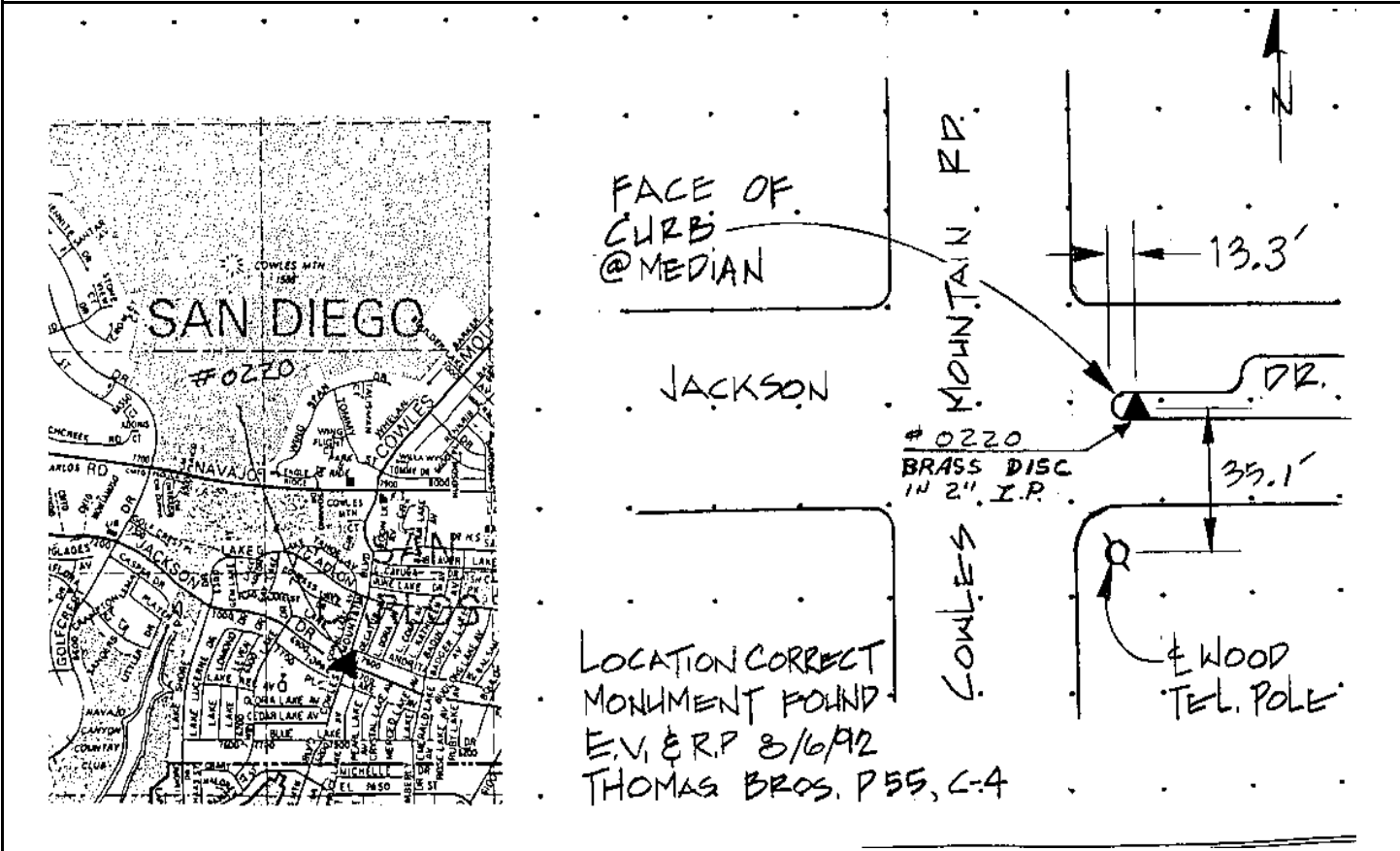


# CITY OF SAN DIEGO

# GPS CONTROL MONUMENT DATA SHEET

Point No./Name: 220	Date: AUG 1992	See Sheet 2 for Visibility Diagram <input type="checkbox"/>	
Station/Mon. Name: JACKSON @ COWELS	Year: AUG 1992	Agency Set By: KERCHEVAL	
Type of Monument: SET 2" IP & BRASS DISK Stamped: GPS 0220 1992	Latitude: 32-47-43.59304 Longitude: 117-01-42.05938	NAD 83 (91.35)	
Elevation 193.578 * NAVD 88 (meters) Elevation 633.02 * NGVD 29 (feet) * Note: Not to be used as a City benchmark	Acc.Horiz.: 1 Order	<b>CCS Zone 6 Grid Coordinates</b> <b>NAD 83 (U.S. Feet)</b> <b>NAD 83 (Meters)</b> N= 1870092.06      N= 570005.201 E= 6322474.70      E= 1927094.142	
Acc. Vert.: NAVD88: GPS 2-II    NGVD29: GPS 3-I	Combined Factor at Station: 0.9999729		
ROS: <input type="checkbox"/> ROS Number:			
<b>To Station</b>	<b>Grid Distance</b>	<b>Bearing or Azimuth</b>	<b>G.S.F. of Line</b>

Monument Description: W END OF CENTER MEDIAN ON JACKSON DR ON E SIDE OF COWLES MTN RD



Reproduced with permission granted by THOMAS BROS. MAPS. This map is copyrighted by THOMAS BROS. MAPS. It is unlawful to copy or reproduce all or any part thereof, whether for personal use or resale, without permission.