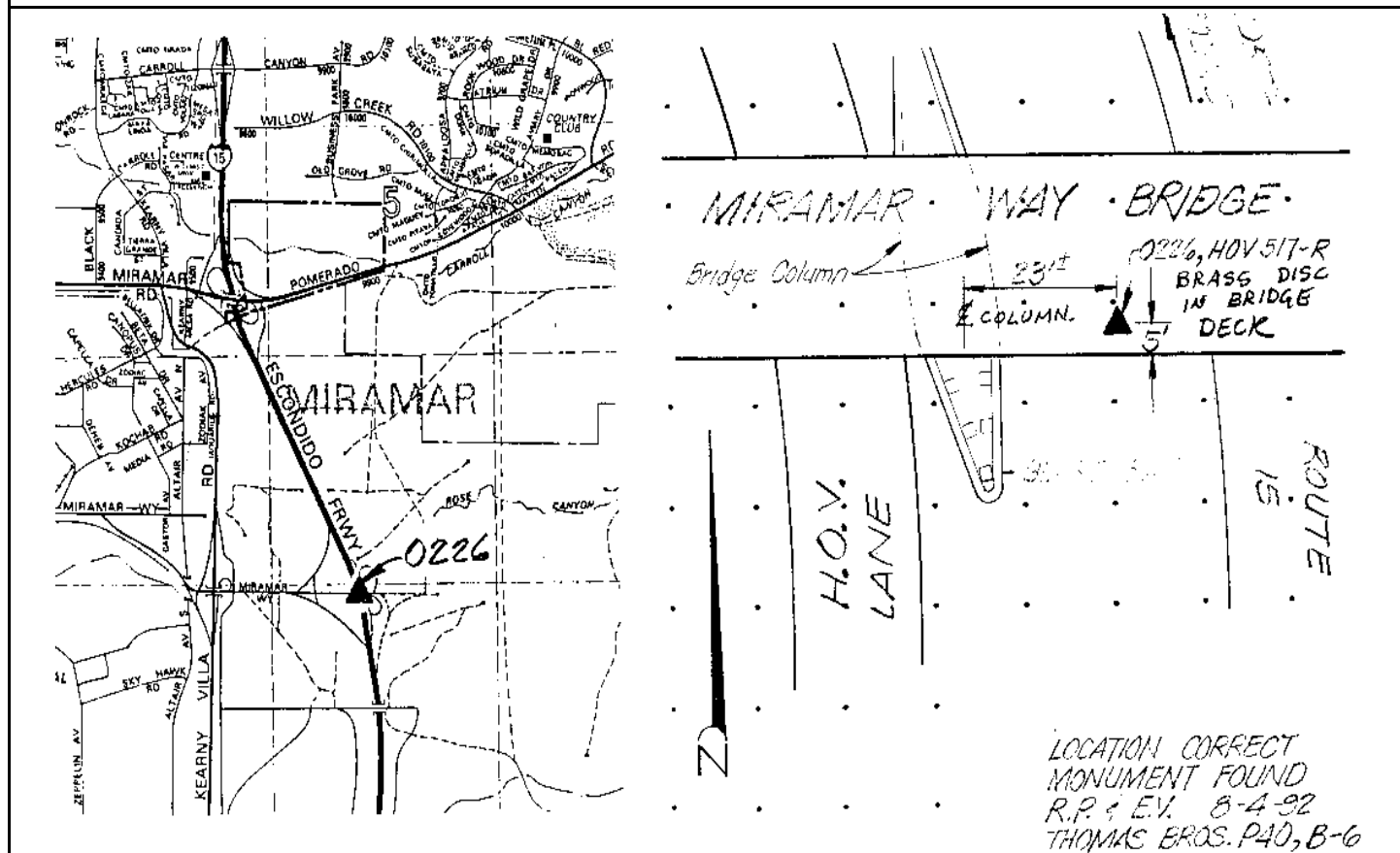


CITY OF SAN DIEGO

GPS CONTROL MONUMENT DATA SHEET

Point No./Name: 226		Date: AUG 1992	See Sheet 2 for Visibility Diagram <input type="checkbox"/>
Station/Mon. Name: HOV 517-R 1986		Year: 1986	Agency Set By: CALTRANS
Type of Monument: FOUND 2.25" BRASS DISK IN CONC BRIDGE Stamped: HOV 517-R 1986		Latitude: 32-52-49.89241 NAD 83 Longitude: 117-06-30.44317 (91.35)	
Elevation 166.302 * NAVD 88 (meters) Elevation 543.48 * NGVD 29 (feet) * Note: Not to be used as a City benchmark		Acc.Horiz.: 1 Order	
Acc. Vert.: NAVD88: GPS 2-II NGVD29: GPS 3-I		CCS Zone 6 Grid Coordinates NAD 83 (U.S. Feet) NAD 83 (Meters) N= 1901241.45 N= 579499.553 E= 6298112.82 E= 1919668.628	
ROS: <input type="checkbox"/> ROS Number:		Combined Factor at Station: 0.9999645	
To Station	Grid Distance	Bearing or Azimuth	G.S.F. of Line
Monument Description: S SIDE OF MIRAMAR WY BRIDGE @ CENTER OF I-15			



Reproduced with permission granted by THOMAS BROS. MAPS. This map is copyrighted by THOMAS BROS. MAPS. It is unlawful to copy or reproduce all or any part thereof, whether for personal use or resale, without permission.