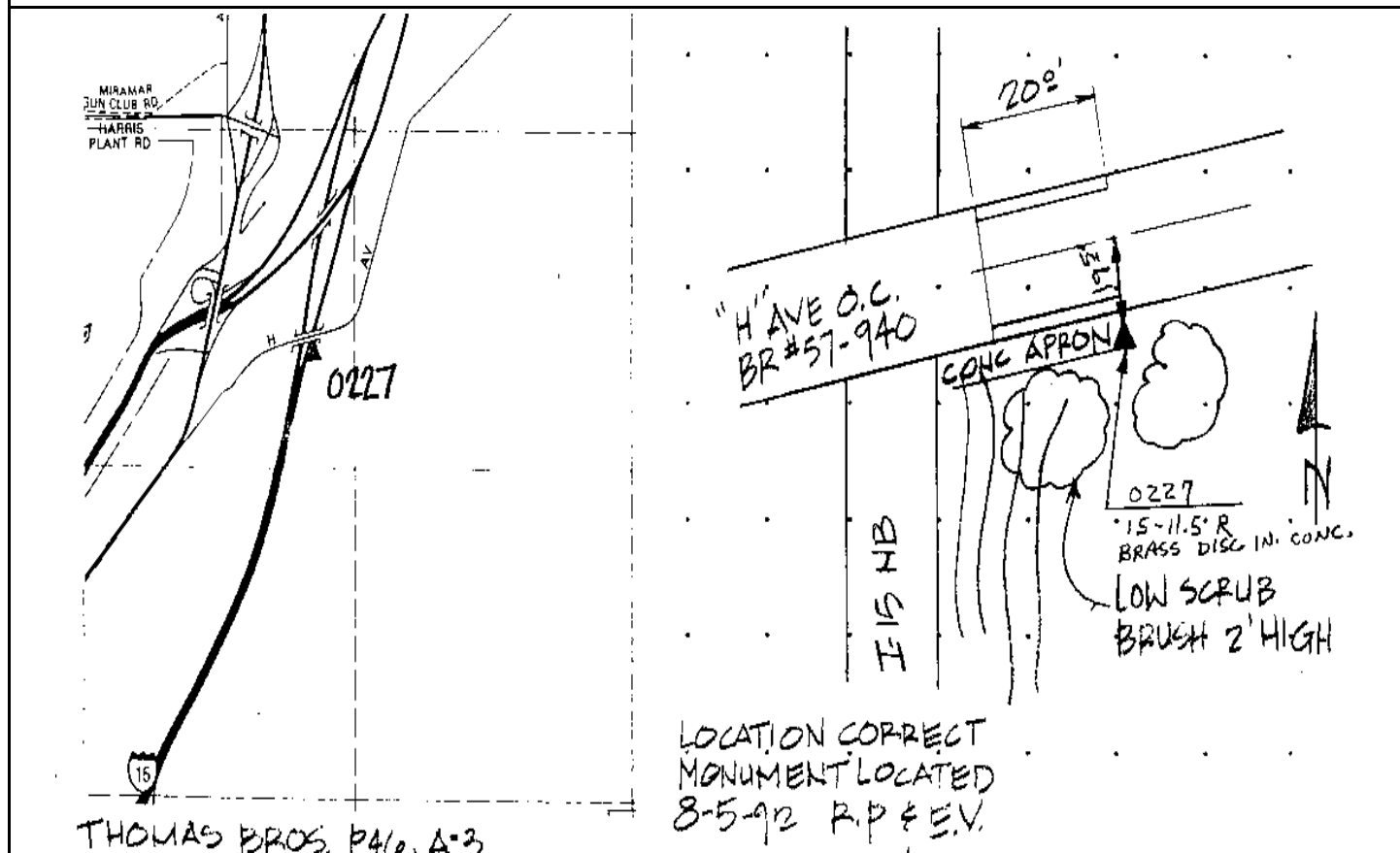


Point No./Name: 227		Date: AUG 1992	See Sheet 2 for Visibility Diagram <input type="checkbox"/>
Station/Mon. Name: 15-11.5R 1985		Year: 1985	Agency Set By: CALTRANS
Type of Monument: FOUND 2.25" BRASS DISK IN CONC BRIDGE		Latitude: 32-51-17.18720 NAD 83 Longitude: 117-06-50.47536 (91.35)	
Stamped: 15-11.5R 1985		Acc.Horiz.: 1 Order	
Elevation 142.494 * NAVD 88 (meters) Elevation 465.37 * NGVD 29 (feet) * Note: Not to be used as a City benchmark		CCS Zone 6 Grid Coordinates NAD 83 (U.S. Feet) NAD 83 (Meters) N= 1891886.30 N= 576648.099 E= 6296326.87 E= 1919124.268	
Acc. Vert.: NAVD88: GPS 2-II NGVD29: GPS 3-I		Combined Factor at Station: 0.9999719	
ROS: <input type="checkbox"/> ROS Number:			
To Station	Grid Distance	Bearing or Azimuth	G.S.F. of Line
Monument Description: S SIDE OF H AVE BRIDGE E OF I-15			



Reproduced with permission granted by THOMAS BROS. MAPS. This map is copyrighted by THOMAS BROS. MAPS. It is unlawful to copy or reproduce all or any part thereof, whether for personal use or resale, without permission.